



ANATECH ELECTRONICS INC
RF & Microwave Filters & Products

104 MHz LC Bandpass Filter

Part Number: AE104B5303



Electrical Specifications

Center Frequency: 104 MHz
1.5dB Passband: 78 MHz to 130 MHz
Rejection: $\geq 50\text{dB}$ @ 0-59 MHz
Rejection2: $\geq 50\text{dB}$ @ 156 MHz to 260 MHz
Rejection3: $\geq 35\text{dB}$ @ 260 MHz to 300 MHz
Impedance: 50 Ohms

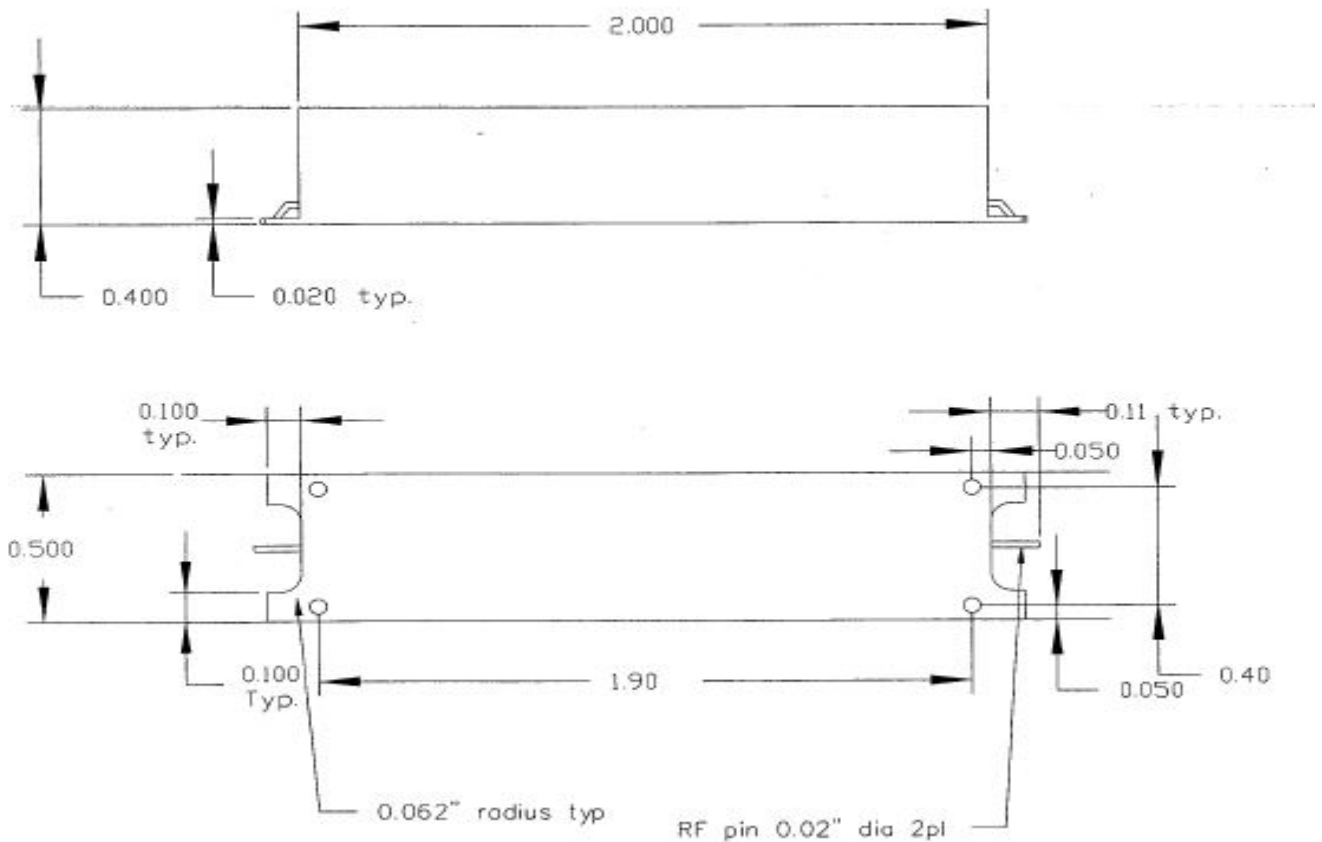
Mechanical

Connector Type: Surface-Mount
Dimensions: 2.0" x 0.5" x 0.4" in.

Environmental

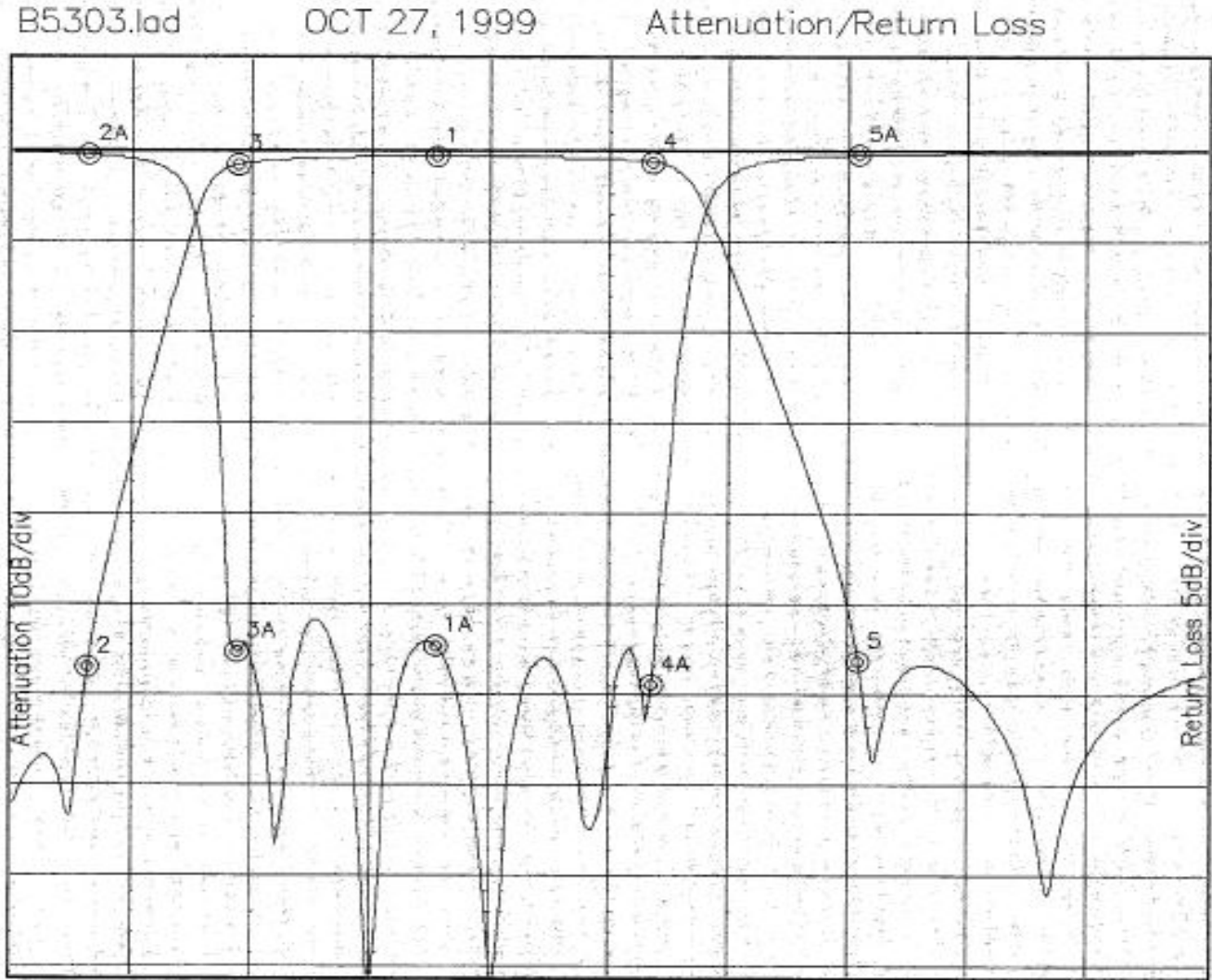
Operating Temperature: -25°C to $+70^{\circ}\text{C}$
Storage Temperature: -40°C to $+90^{\circ}\text{C}$
Shock: 10 G. 11ms
Vibration: 10 G. 5 to 200Hz

Outline Drawing:





Response Plot:



Attenuation Start: 50.0MHz Stop: 200.0MHz

Return Loss Start: 50.0MHz Stop: 200.0MHz

Marker 1 Freq 103.06MHz Atten -0.679dB
 Marker 2 Freq 59.208MHz Atten -56.834dB
 Marker 3 Freq 78.110MHz Atten -1.521dB
 Marker 4 Freq 130.21MHz Atten -1.223dB
 Marker 5 Freq 156.13MHz Atten -56.135dB

Marker 1A Freq 103.06MHz Ret Loss -27.174dB
 Marker 2A Freq 59.208MHz Ret Loss -0.233dB
 Marker 3A Freq 78.110MHz Ret Loss -27.481dB
 Marker 4A Freq 130.21MHz Ret Loss -29.366dB
 Marker 5A Freq 156.13MHz Ret Loss -0.252dB