



**ANATECH ELECTRONICS INC**  
RF & Microwave Filters & Products

## 10 MHz LC Bandpass Filter

Part Number: AE10B5174



### Electrical Specifications

**Center Frequency:** 10 MHz  
**Bandwidth:** 2 MHz Min.  
**Insertion Loss:** <2dB  
**Rejection:** >35dB @ 20 MHz  
**Impedance:** 50 Ohms

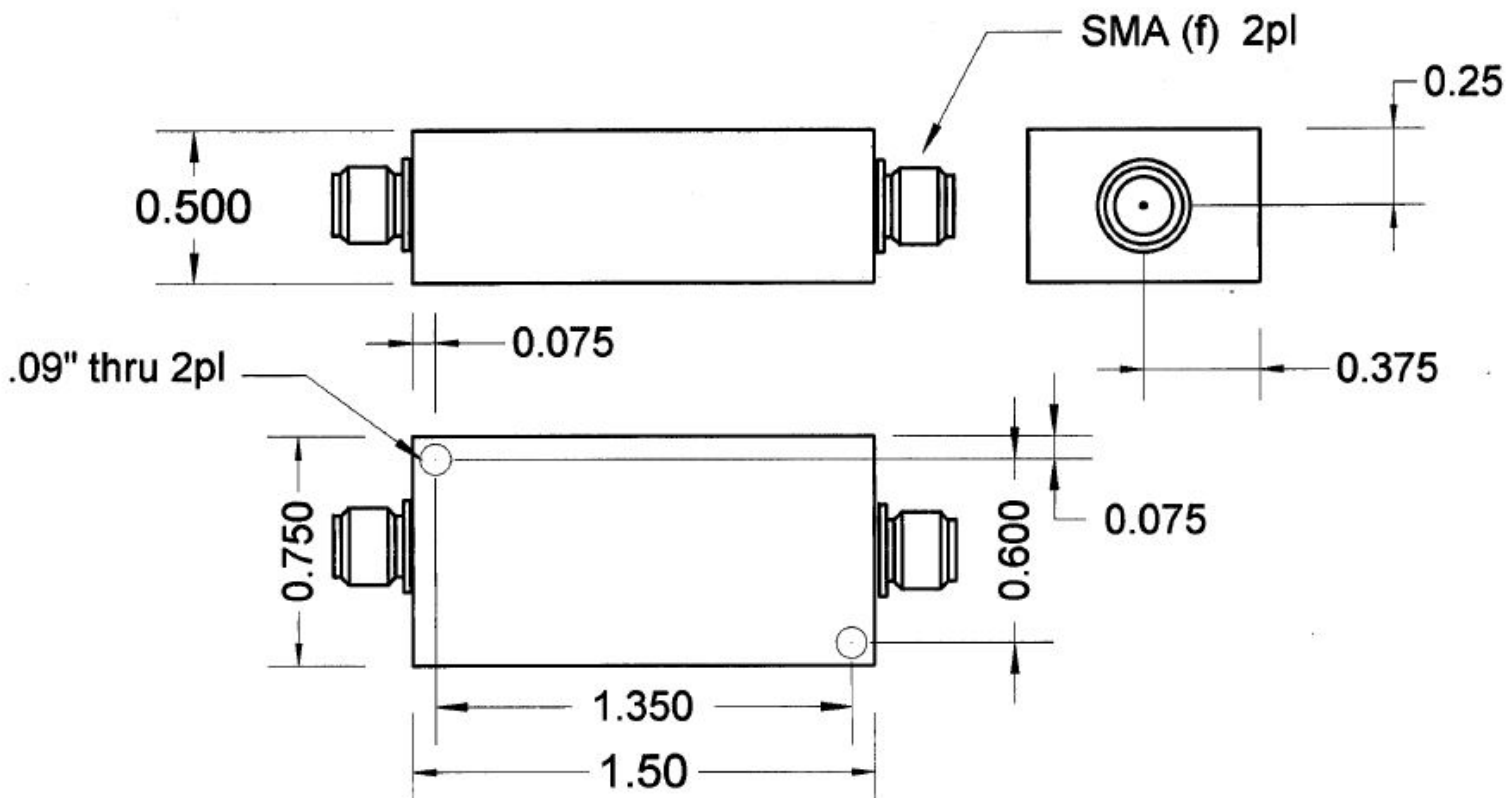
### Mechanical

**Mounting Method:** Through Holes  
**Connector Type:** SMA(F)  
**Dimensions:** 1.5" x 0.75" x 0.5" in.

### Environmental

**Operating Temperature:** -25°C to +70°C  
**Storage Temperature:** -40°C to +90°C  
**Shock:** 10 G. 11ms  
**Vibration:** 10 G. 5 to 200Hz

### Outline Drawing:





**ANATECH ELECTRONICS INC**  
RF & Microwave Filters & Products

# 10 MHz LC Bandpass Filter

Part Number: AE10B5174

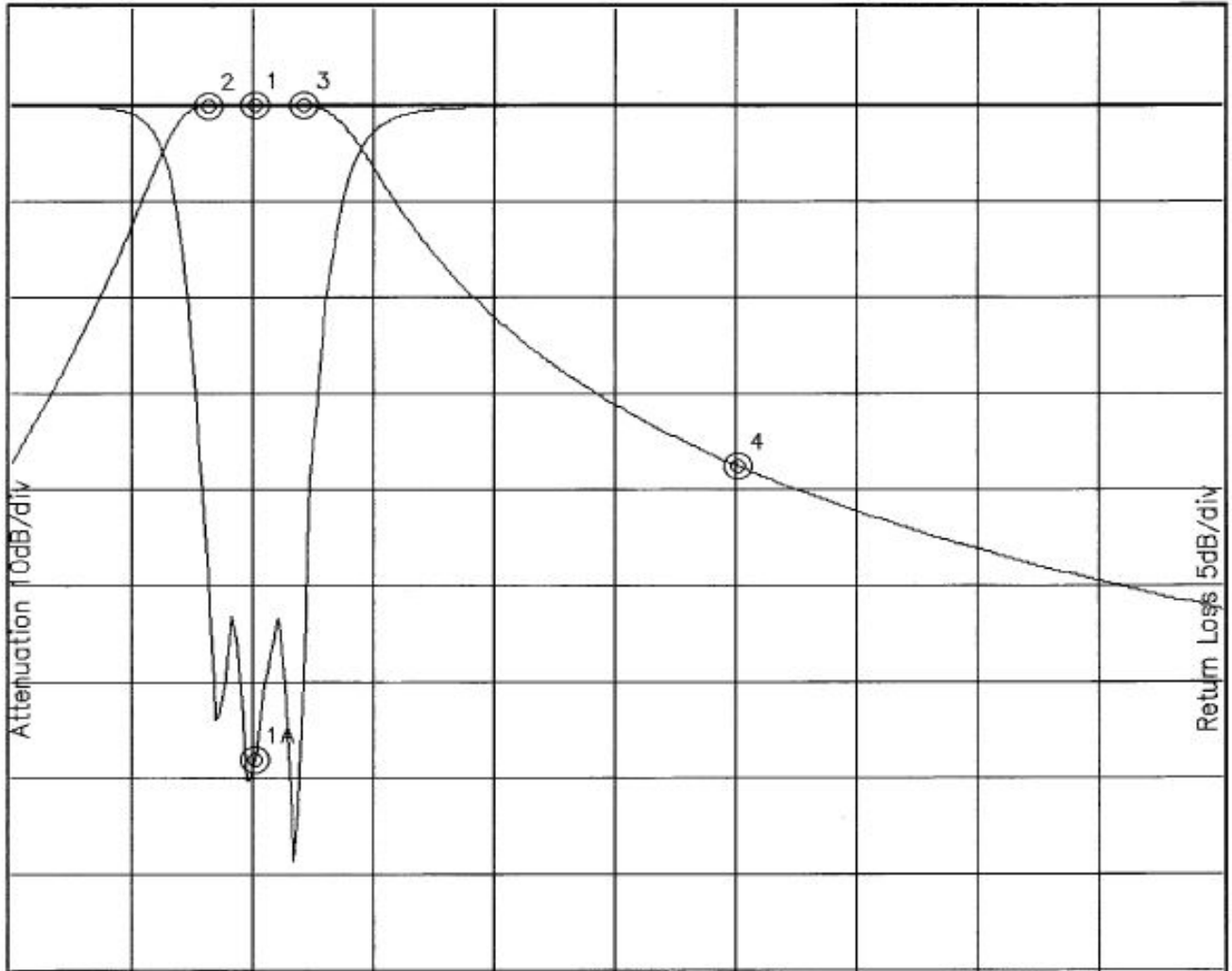


## Response Plot:

B5174.lad

NOV 8, 2001

Attenuation/Return Loss



Attenuation Start: 5.0MHz Stop: 30.0MHz

Return Loss Start: 5.0MHz Stop: 30.0MHz

Offset -0.4347dB

Marker 1 Freq 10.008MHz Atten -0.028dB

Marker 1A Freq 10.008MHz Ret Loss -34.286dB

Marker 2 Freq 9.039MHz Atten -0.115dB

Marker 3 Freq 11.018MHz Atten -0.097dB

Marker 4 Freq 20.024MHz Atten -37.782dB