



ANATECH ELECTRONICS INC
RF & Microwave Filters & Products

0-28 MHz / 32-500 MHz Cavity Diplexer

Part Number: AE14-266DB5167

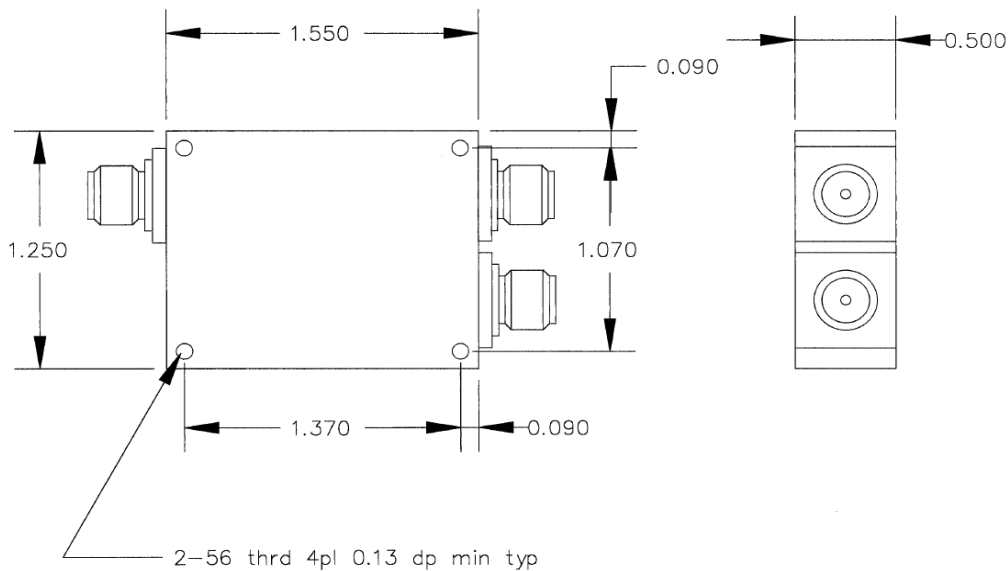


<u>Characteristics</u>	<u>Band 1</u>	<u>Band 2</u>
Passband:	0-28 MHz	32-500 MHz
Bandwidth:	28 MHz	468 MHz
Passband Insertion Loss:	≤ 1.0dB	≤ 1.0dB
Passband Return Loss:	≥ 10dB	≥ 10dB
Rejection: >60dB @	0-22.5 MHz	
Rejection: >60dB @	40-500 MHz	

<u>Mechanical</u>	
Connector Type:	SMA (F)
Dimensions:	1.55 x 1.25 x 0.5 inches.

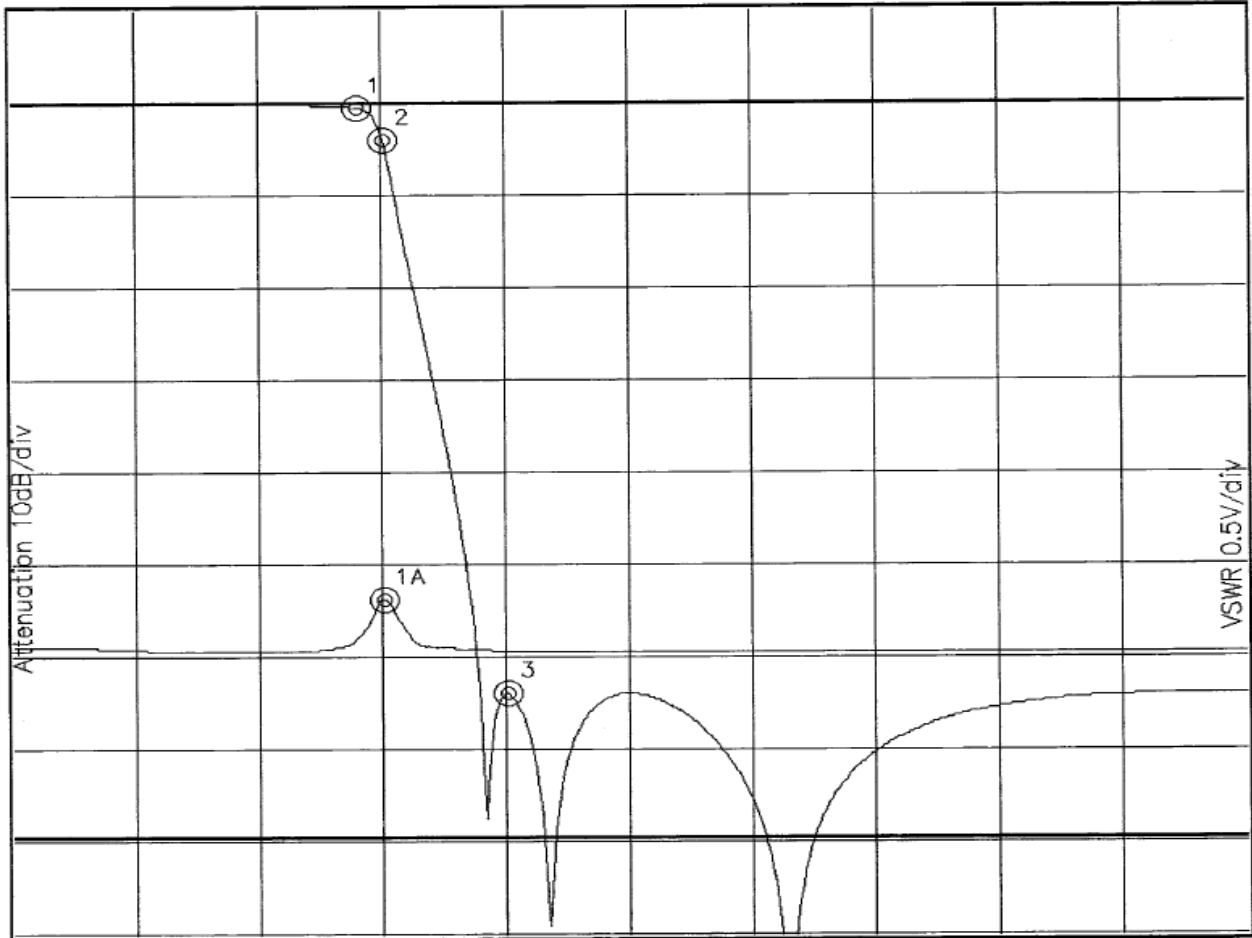
<u>Environmental</u>	
Operating Temperature:	-40 to +70 deg.C
Storage Temperature:	-50 to +85 deg.C

Outline Drawing:





Response Plot-1:



Attenuation Start: 0.010Hz Stop: 100.0MHz

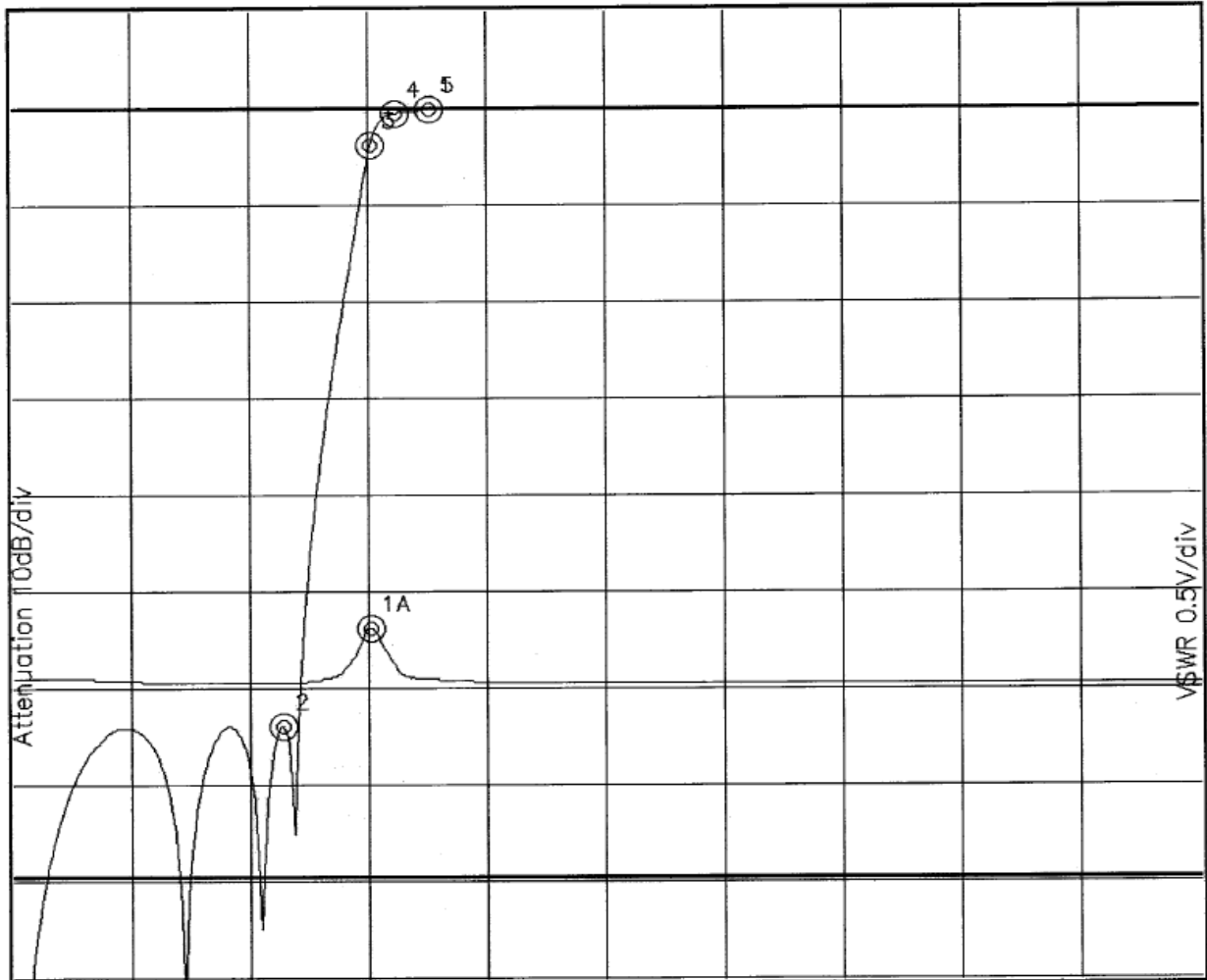
VSWR Start: 0.010Hz Stop: 100.0MHz

Marker 1 Freq 27.948MHz Atten -0.653dB
Marker 2 Freq 30.048MHz Atten -4.174dB
Marker 3 Freq 40.065MHz Atten -64.417dB

Marker 1A Freq 30.048MHz VSWR 1.296



Response Plot-2:



Attenuation Start: 0.010MHz Stop: 100.0MHz

VSWR Start: 0.010MHz Stop: 100.0MHz

- Marker 1 Freq 35.057MHz Atten -0.283dB
- Marker 2 Freq 22.617MHz Atten -64.274dB
- Marker 3 Freq 30.048MHz Atten -3.955dB
- Marker 4 Freq 32.149MHz Atten -0.591dB
- Marker 5 Freq 35.057MHz Atten -0.283dB

Marker 1A Freq 30.048MHz VSWR 1.296