



**ANATECH ELECTRONICS INC**  
RF & Microwave Filters & Products

## 14.7 MHz LC Bandpass Filter

**Part Number: AE14.7B10089**



### Electrical Specifications

**Center Frequency:** 14.7 MHz

**Bandwidth:** 2 MHz

**Passband :** 13.7 MHz to 15.7 MHz

**Insertion Loss:**  $\leq 0.3\text{dB}$  @ 14.7 MHz

**Return Loss:**  $>14\text{dB}$  @ 13.7 MHz to 15.7 MHz

**Rejection:**  $>20\text{dB}$  @ 0-5 MHz

**Rejection2:**  $>20\text{dB}$  @ 30MHz to 500 MHz

**Impedance:** 50 Ohms

### Mechanical

**Mounting Method:** Through Holes

**Connector Type:** N-Type(F)

**Dimensions:** 5.1" x 2.0" x 1.5" in.

### Environmental

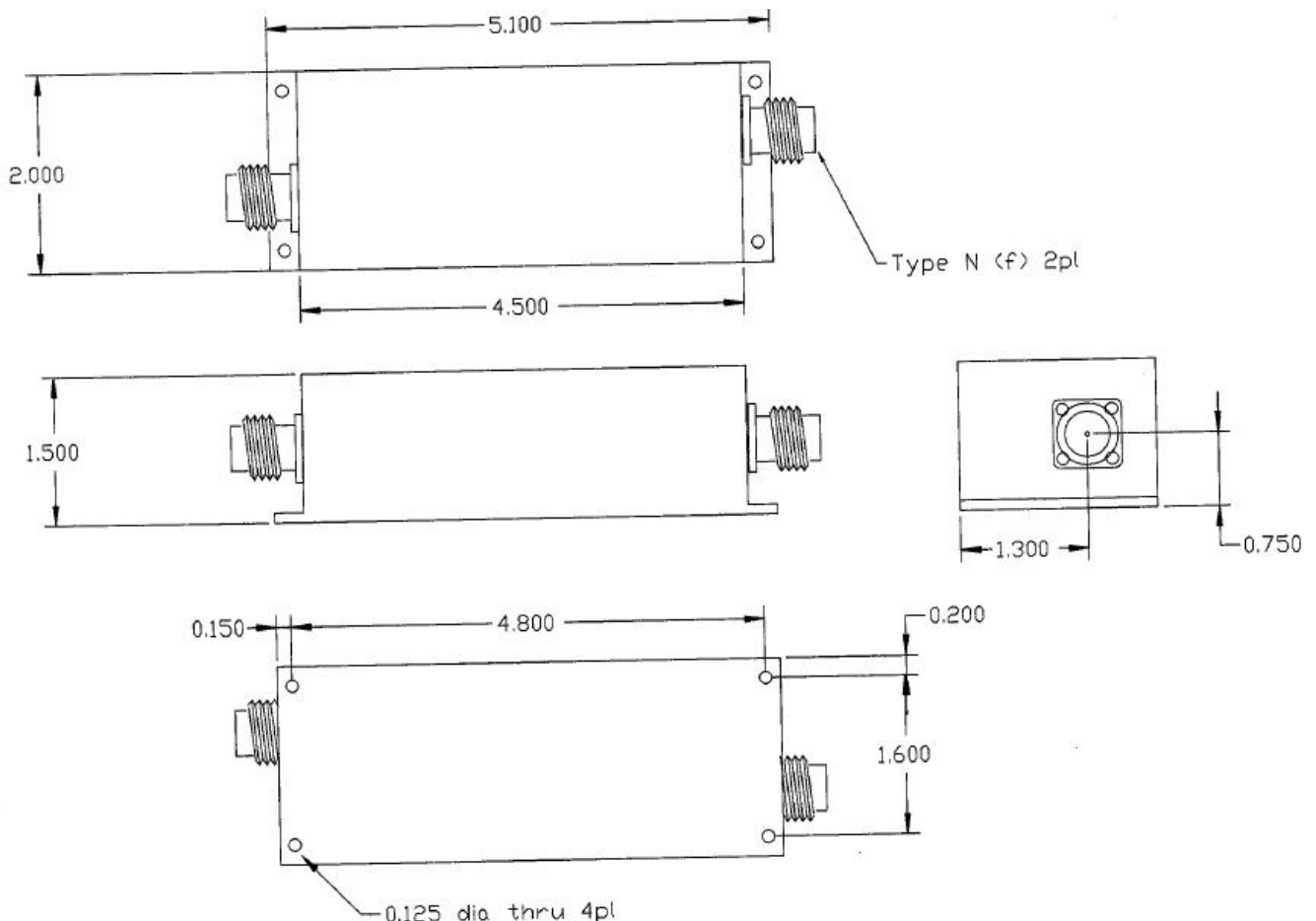
**Operating Temperature:**  $-25^{\circ}\text{C}$  to  $+70^{\circ}\text{C}$

**Storage Temperature:**  $-40^{\circ}\text{C}$  to  $+90^{\circ}\text{C}$

**Shock:** 10 G. 11ms

**Vibration:** 10 G. 5 to 200Hz

### Outline Drawing:





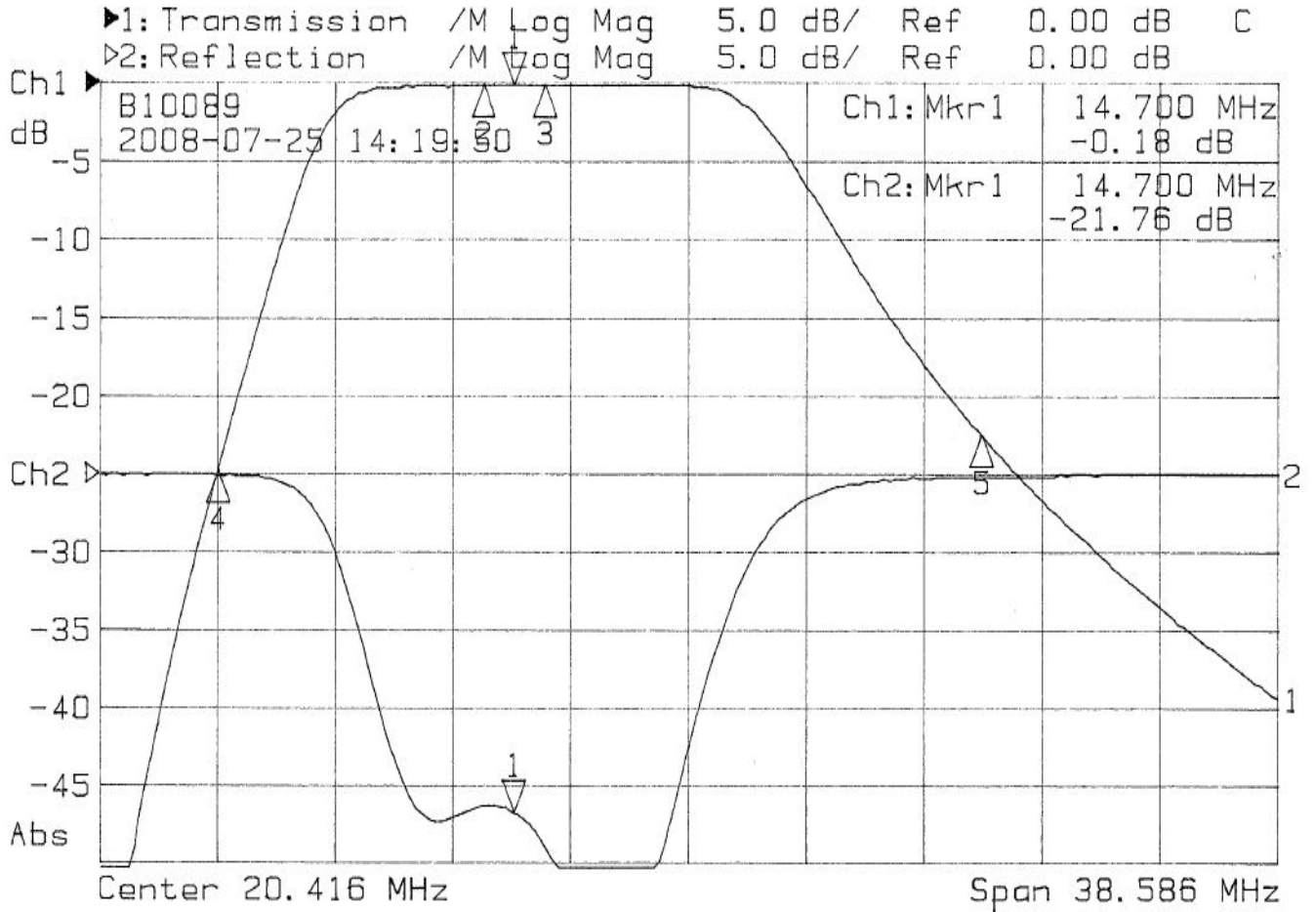
**ANATECH ELECTRONICS INC**  
RF & Microwave Filters & Products

# 14.7 MHz LC Bandpass Filter

**Part Number: AE14.7B10089**



## Response Plot:



1: Mkr (MHz)	dB	2: Mkr (MHz)	dB
1> 14.70	-0.18	1> 14.70	-21.76
2: 13.70	-0.16		
3: 15.70	-0.14		
4: 5.00	-24.81		
5: 30.00	-22.56		

*X. Swer* (AE F)