



1413 MHz Ceramic Bandpass Filter

Part Number: AE1413CB1844-1



ANATECH ELECTRONICS INC
RF & Microwave Filters & Products

Electrical Specification:

- Center Frequency (CF):** 1413.5 MHz
- Bandwidth:** 42 MHz min
- Insertion Loss (Fo):** 2.5 dB Max
- VSWR:** 1.5:1 Max @ 1395 – 1432 MHz
- Ripple:** 1.25 dBc min @ 1395 MHz
- Ripple:** 0.5 dBc min @ 1401 MHz
- Ripple:** 0.5 dBc min @ 1426 MHz
- Ripple:** 1.25 dBc min @ 1432 MHz
- Rejection:** 50 dBc min @ DC~1300 MHz
- Rejection:** 20 dBc min @ 1300~1370 MHz
- Rejection:** 18 dBc min @ 1370~1385 MHz (No guaranty, TBD after first piece)
- Rejection:** 18 dBc min @ 1442~1457 MHz (No guaranty, TBD after first piece)
- Rejection:** 20 dBc min @ 1457~1495 MHz
- Rejection:** 50 dBc min @ 1495~3000 MHz
- Group Delay Var:** Goal 18 nsec max @ 1395-1432 MHz
- Input / Output Impedance:** 50 Ohms
- Power Handling:** 1 Watt

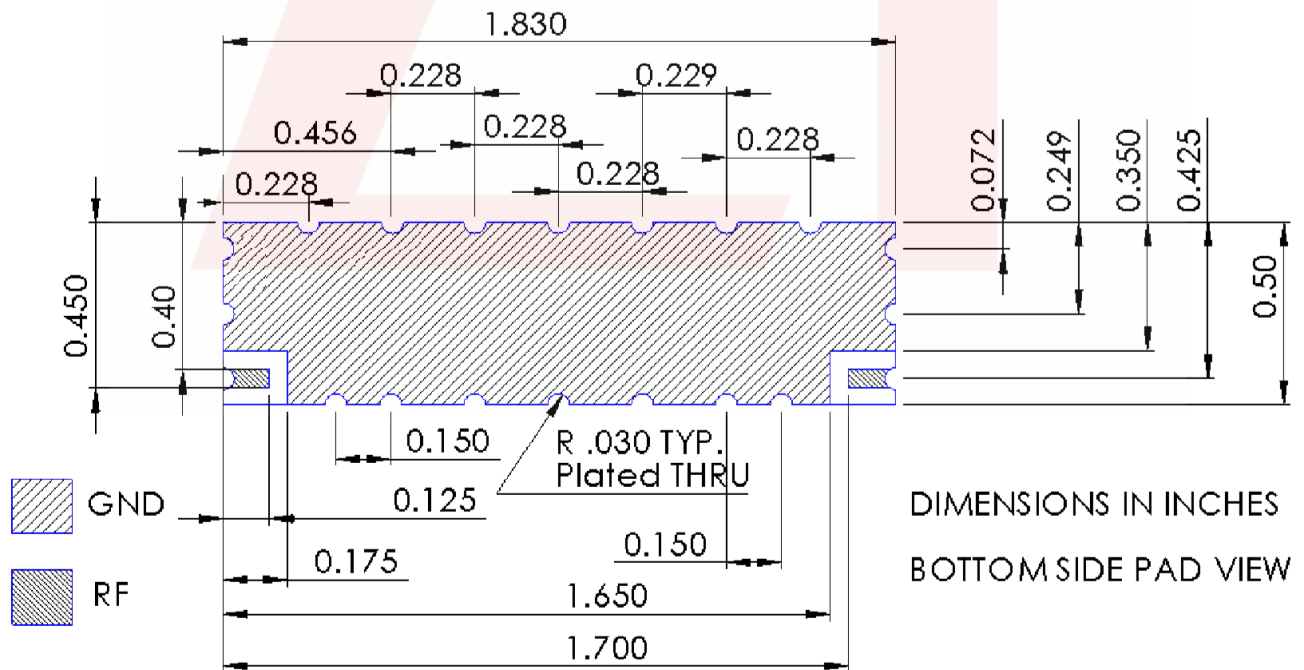
Mechanical

- Mounting Method:** SMT
- Dimensions:** 1.83 x 0.50 x 0.40 in
- Dimensions:** 46.48 x 12.7 x 10.16 mm

Environmental

- Operating Temperature:** 0°C to +50°C
- Storage Temperature:** -40 deg. C to 65 deg. C

Outline Drawing:



DS-CB1844-03162022-Rev3