



ANATECH ELECTRONICS INC
RF & Microwave Filters & Products

1700 MHz LC Bandpass Filter

Part Number: AE1700B6369



Electrical Specifications

Center Frequency: 1700 MHz
Bandwidth: 100 MHz
Passband Frequencies: 1650 MHz to 1750 MHz
Insertion loss: <3dB
VSWR: 1.5:1 @ 1675 MHz to 1725 MHz
Impedance: 50 Ohms
Rejection: 60dB @ 0- 875 MHz
Rejection2: 60dB @2475MHz to 3000 MHz

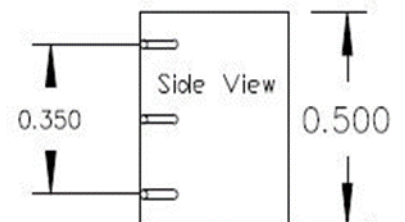
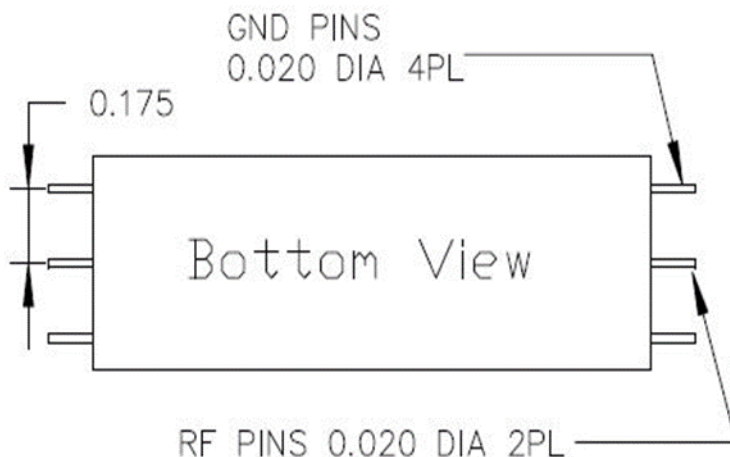
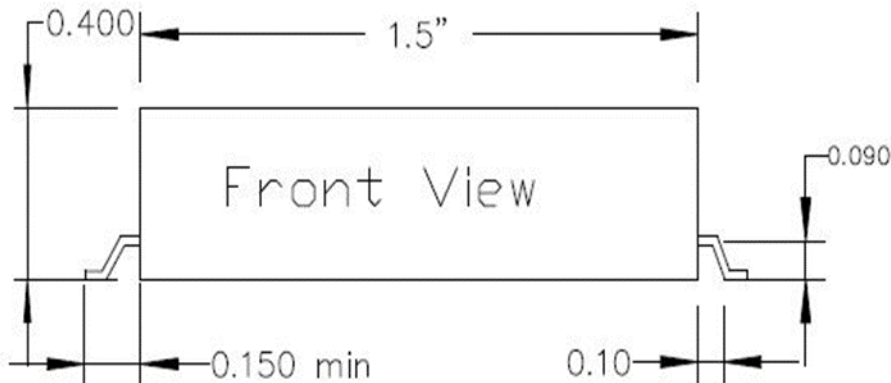
Mechanical

Mounting Method : Surface Mount
Connector Type: RF Pins 0.020" input pins
Dimensions: 1.5" X 0.5" x 0.4" in.

Environmental

Operating Temperature: -25°C to +70°C
Storage Temperature: -40°C to +90°C
Shock: 10 G. 11ms
Vibration: 10 G. 5 to 200Hz

Outline Drawing:





ANATECH ELECTRONICS INC
RF & Microwave Filters & Products

1700 MHz LC Bandpass Filter

Part Number: AE1700B6369



Response Plot:

