



**ANATECH ELECTRONICS INC**  
RF & Microwave Filters & Products

**1880 / 1960 / 1745 / 2145 MHz  
Ceramic Quad Multiplexer**

**Part Number:  
AE1880-1960-1745-2145MP1007**



Electrical Specifications					
Items	Unit	CH 1	CH 2	CH 3	CH 4
Center Frequency	MHz	1880.0	1960.0	1745.0	2145.0
Bandwidth (BW)	MHz	60	60	70	70
Pass Band	MHz	1850.0-1910.0	1930.0-1990.0	1710.0-1780.0	2110.0-2180.0
Insertion Loss in BW	dB Max	5.0	5.0	5.0	5.0
Ripple in BW	dB Max	2.5	2.5	2.5	2.5
Return Loss in BW	dB Min	15.0	15.0	15.0	15.0
Attenuation	MHz	45 dBc min @ 1930-1990	45 dBc min @ 1850-1910	55 dBc min @ 2110-2180	55 dBc min @ 1710-1780
		50 dBc min @ 1710-1780	50 dBc min @ 1710-1780	45 dBc min @ 1850-1910	43 dBc min @ 1850-1910
		50 dBc min @ 2110-2180	50 dBc min @ 2110-2180	50 dBc min @ 1930-1990	45 dBc min @ 1930-1990
		15 dBc min @ 1920	15 dBc min @ 1920	50 dBc min @ 698-710	40 dBc min @ 2010
		40 dBc min @ 2010	50 dBc min @ 698-710	50 dBc min @ 776-787	50 dBc min @ 698-710
		8 dBc min @ 1840	50 dBc min @ 776-787	50 dBc min @ 824-849	50 dBc min @ 728-757
		50 dBc min @ 728-757	50 dBc min @ 824-849	50 dBc min @ 869-894	50 dBc min @ 776-787
		50 dBc min @ 776-787	50 dBc min @ 869-894	40 dBc min @ 2496-2696	50 dBc min @ 824-849
		50 dBc min @ 824-849	45 dBc min @ 2496-2696	40 dBc min @ 1842.5	50 dBc min @ 869-894
		50 dBc min @ 869-894	40 dBc @ 1842.5	40 dBc min @ 1932.5	40 dBc min @ 2496-2696
		-	-	-	40 dBc min @ 1932.5
Isolation	CH1<->CH3	MHz	60 dB min @ 1710.0-1780.0		
	CH1<->CH2		80 dB min @ 1850.0-1910.0		
	CH2<->CH4		54 dB min @ 1930.0-1990.0		
Crossover Isolation	CH1<->CH3	dB min	60 dB min @ 2110.0-2180.0		
	CH1<->CH2		40.0		
	CH2<->CH4		40.0		
Input Power	3.0 W Max				
In/Out Impedance	50 Ω				
Operating Temperature	-30°C to +85°C				



**ANATECH ELECTRONICS INC**  
RF & Microwave Filters & Products

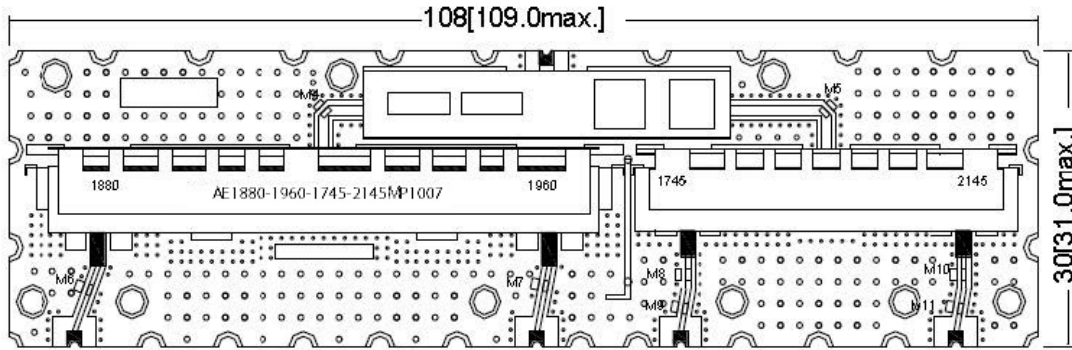
**1880 / 1960 / 1745 / 2145 MHz  
Ceramic Quad Multiplexer**

**Part Number:  
AE1880-1960-1745-2145MP1007**

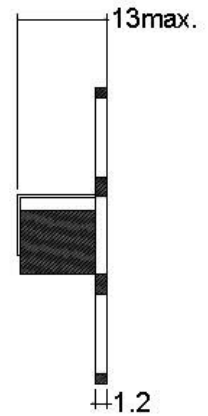


**Outline Drawing:**

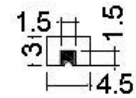
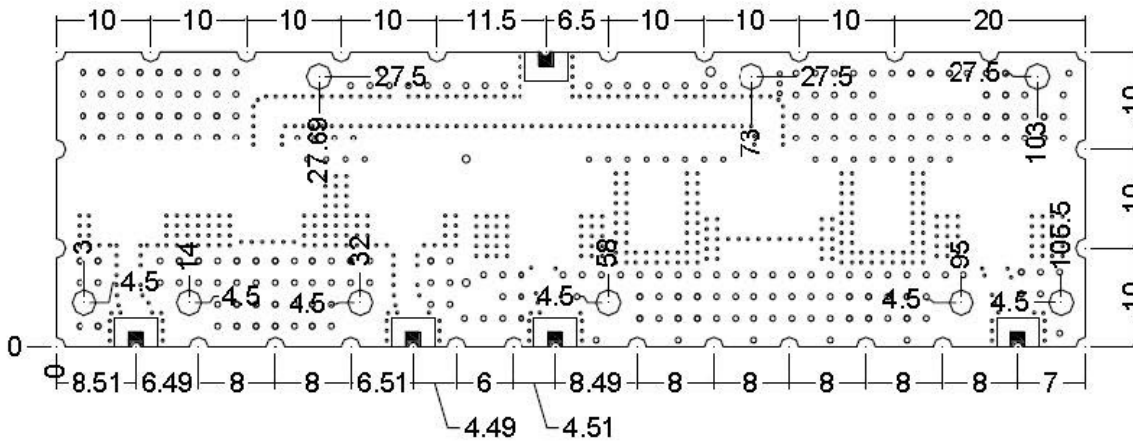
**TOP VIEW**



**SIDE VIEW**



**BOTTOM VIEW**



**■ IN-OUT PORT**  
**▨ GROUND**  
**TOLERANCE :±0.20**  
**UNIT: mm**