



100 MHz Saw Filter

Part Number: AM100S917



Parameters Description	Unit	Minimum	Typical	Maximum
Center Frequency (Fo)	MHz	99.90	100.0	100.10
Insertion Loss at Fo	dB	-	10.00	12.00
Passband Ripple	dB	-	0.45	1.00
Group Delay Variation	nsec	-	50	100
Absolute Delay at Fo	usec	-	0.95	-
Bandwidth at 1.0 dB	MHz	-	20.60	-
Bandwidth at 3.0 dB	MHz	21.00	21.39	-
Bandwidth at 40.0 dB	MHz	-	25.75	26.00
Temperature Coefficient	ppm/°C	-	-86	-
Ultimate Attenuation	dB	40	50	--
Substrate Material	LiNbO ₃			

Parameters Description	Unit	Minimum	Typical	Maximum
Operation Temperature Range	°C	-40	-	+80
Storage Temperature Range	°C	-40	-	+85
Maximum DC Voltage	V	-	-	10
Maximum Input Power	dBm	-	-	10
Source Impedance (Single Ended) ₁	Ω	-	50	-
Load Impedance (Single Ended) ₁	Ω	-	50	-

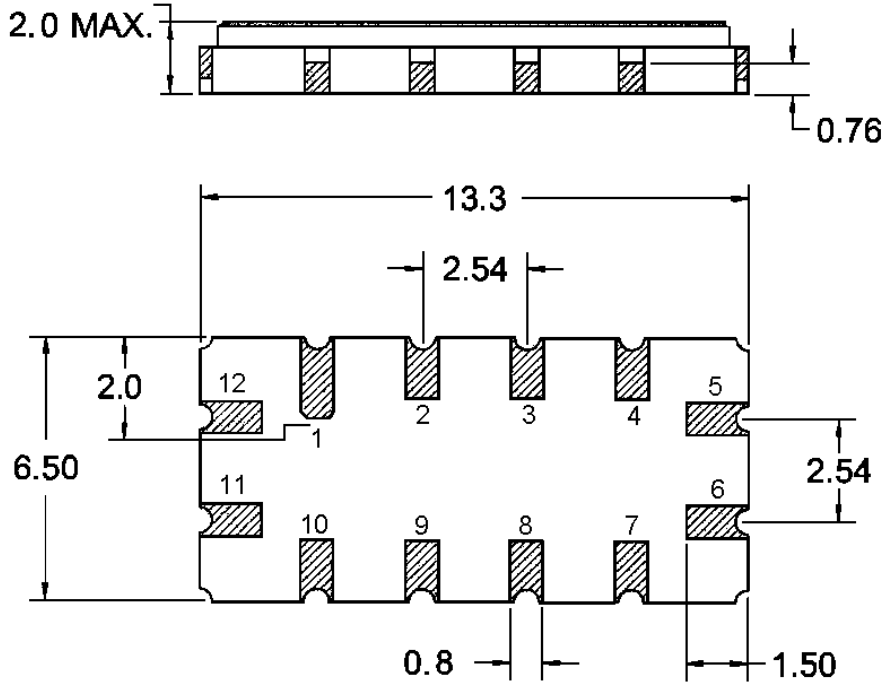


100 MHz Saw Filter

Part Number: AM100S917

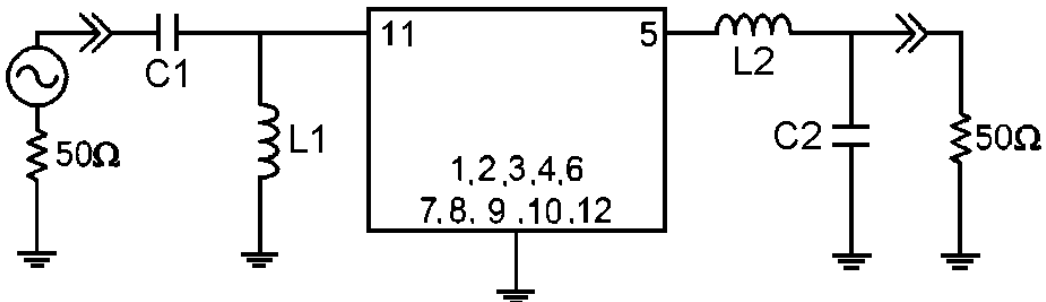


Outline Drawing:



Input : 11 , Input Gnd : 12
Output : 5 , Output Gnd : 6
Other Pins : Ground

Testing Environment:



50Ω Single-ended

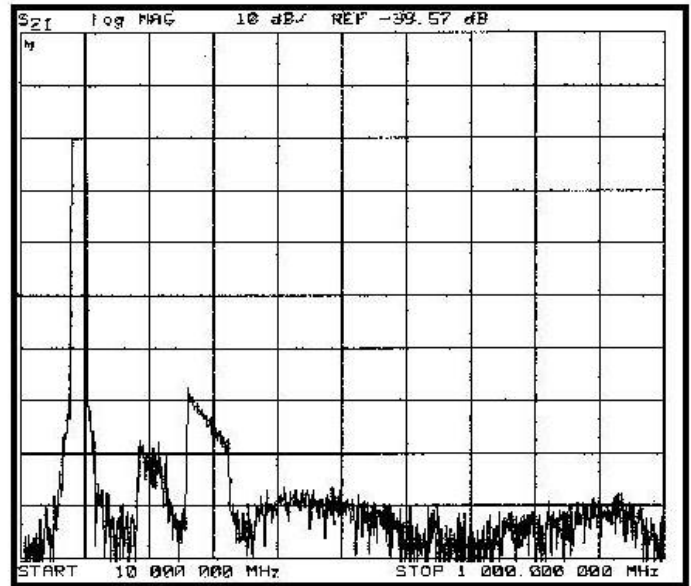
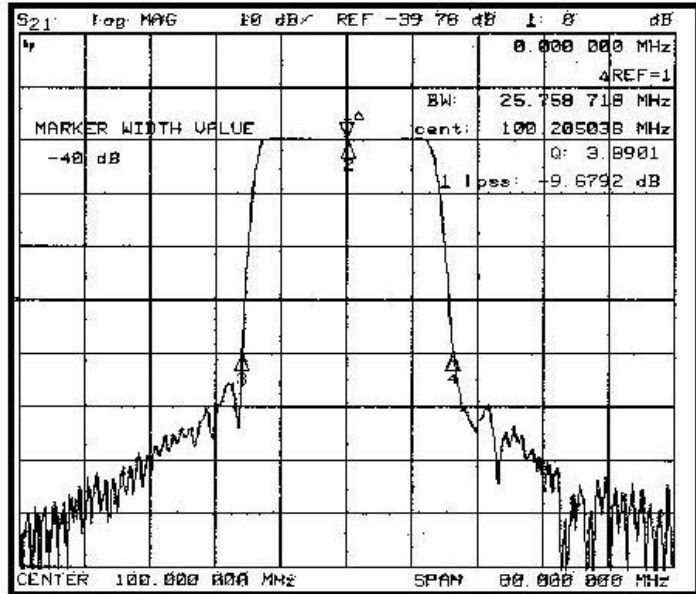
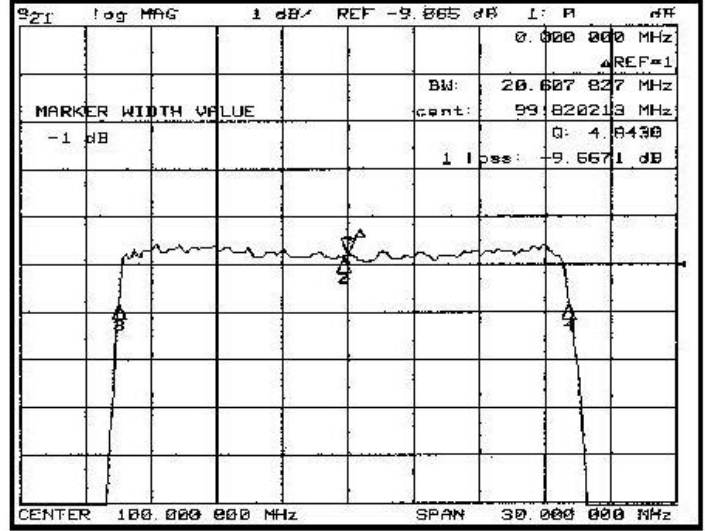
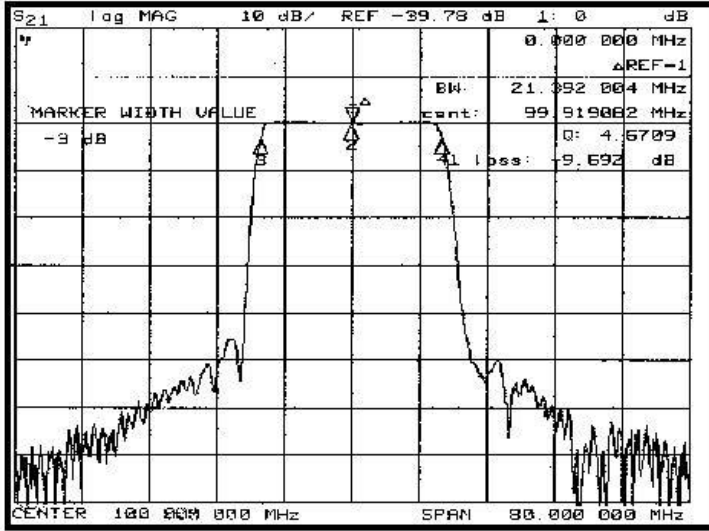
L1 = 33 nH L2 = 82 nH

C1 = 82 pF C2 = 39 pF

Ambient Temperature = 25°C



Frequency Response:





100 MHz Saw Filter

Part Number: AM100S917



Frequency Response:

