



Electrical specifications

Center Frequency: 1095 MHz
Bandwidth: 1 MHz
Input / Output Impedance: 50 Ohms
Passband Insertion Loss: 1095 MHz 1.4 dB max
Passband Ripple: 0.2 dB
Passband Return Loss: 1095 MHz 16.0 dB min
Rejection: >15 dB @ 1030 MHz
Rejection 2: >15 dB @ 1135 MHz
Power Handling: 5 w

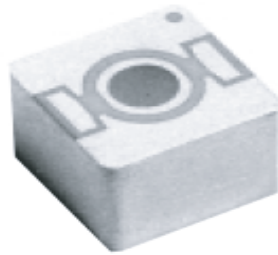
Mechanical

Mounting Method: SMT
Dimensions: 11.569 x 11.569 x 10.109 mm

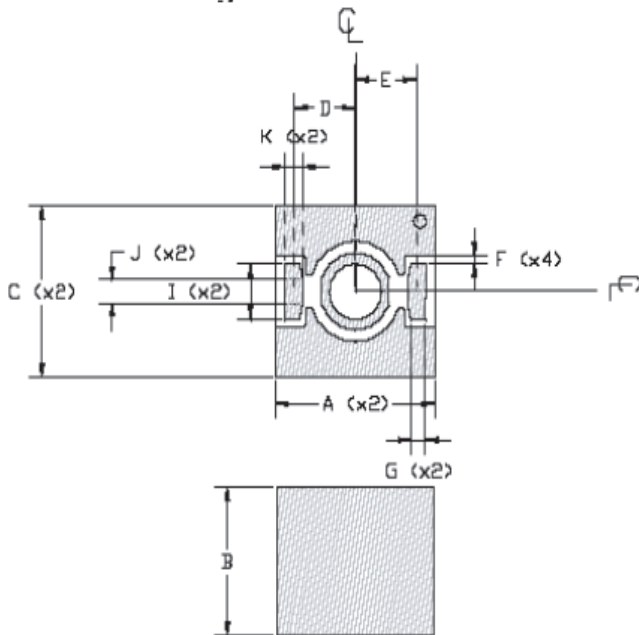
Environmental

Operating Temperature: -30°C to +70°C
Storage Temperature: -50°C to +90°C

This product is RoHs compliant.



Mechanical Drawing



Dim	Nominal (mm)	Tolerance (mm) +/- or max
A	11.569	max
B	10.109	max
C	11.569	max
D	4.445	0.127
E	4.445	0.127
F	0.472	0.127
G	1.041	0.127
I	3.835	0.127
J	1.549	0.127
K	1.295	0.127



Response Plot:

