



# 110 MHz IF Saw Filter 3 MHz Bandwidth

## Part Number: AM110S582



**ANATECH ELECTRONICS INC**  
RF & Microwave Filters & Products

Parameters Description	Unit	Minimum	Typical	Maximum
Center Frequency (Fo)	MHz	110.33	110.43	110.53
Insertion Loss at Fo	dB	-	20.00	21.00
Passband Ripple Variation	dB	-	0.40	0.95
Group Delay Variation	nsec	-	90	200
Absolute Delay at Fo	usec	-	1.64	-
Bandwidth at -1.0 dB	MHz	-	3.90	-
Bandwidth at -3.0 dB	MHz	4.10	4.25	-
Bandwidth at -50.0 dB	MHz	-	5.78	6.00
Temperature Coefficient	ppm/°C	-	-20	-
Ultimate Rejection	dB	50	53	-

Parameters Description	Unit	Minimum	Typical	Maximum
Operation Temperature Range	°C	-30	-	+80
Storage Temperature Range	°C	-40	-	+85
Maximum DC Voltage	V	-	-	10
Maximum Input Power	dBm	-	-	10
Source Impedance (Single Ended) <sub>1</sub>	Ω	-	50	-
Load Impedance (Single Ended) <sub>1</sub>	Ω	-	50	-
Package Size and Type	20.0 x 9.8 x 1.8 mm		D1	



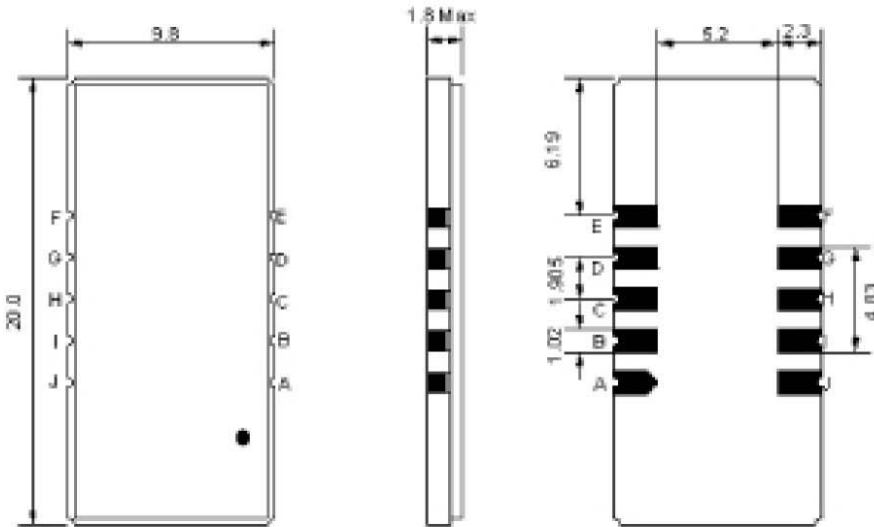
# 110 MHz IF Saw Filter 3 MHz Bandwidth

## Part Number: AM110S582



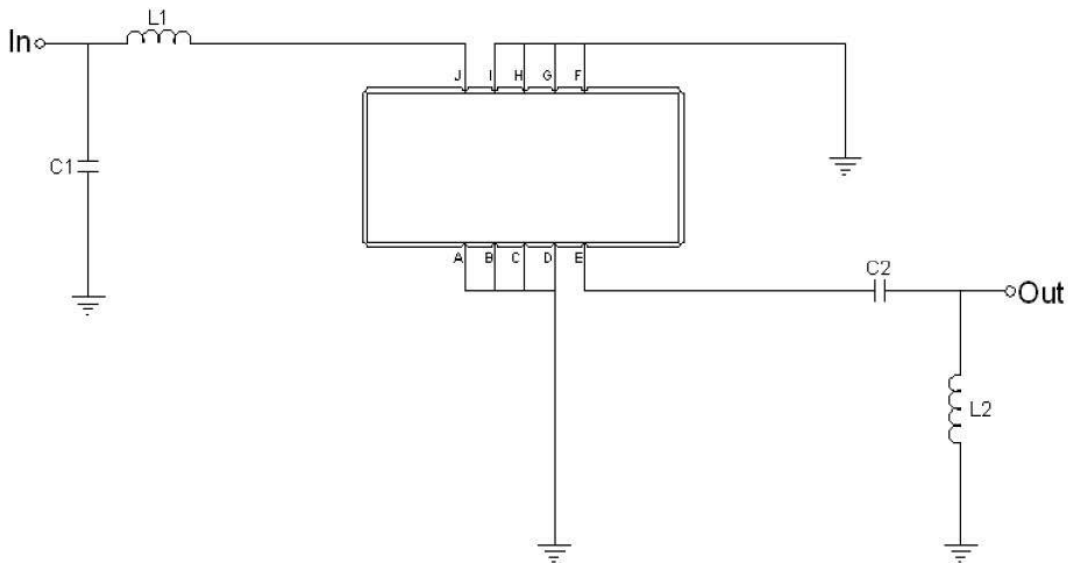
**ANATECH ELECTRONICS INC**  
RF & Microwave Filters & Products

### Outline Drawing:



Pin Description	
Ground	A B C D F G H I
Input	J
Output	E

### Testing Environment:

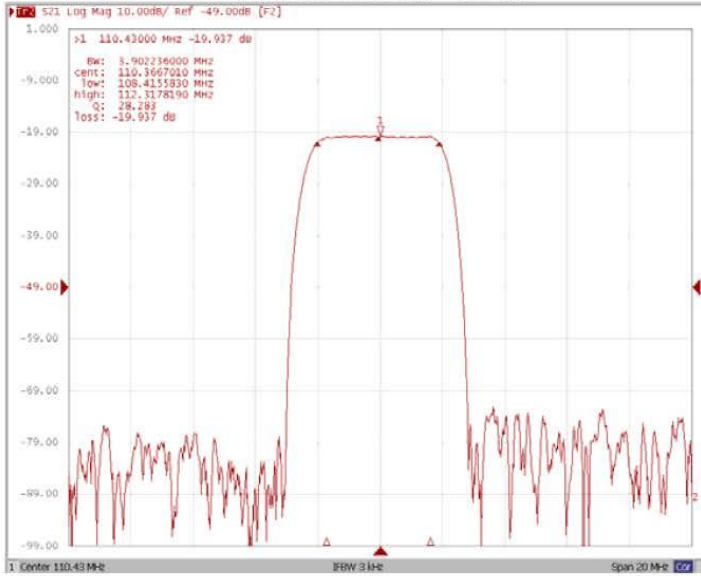


Test Fixture & Values	
Input	L1=18nH, C1=110pF
Output	L2=47nH, C2=110pF
Source/Load Impedance	50 Ω

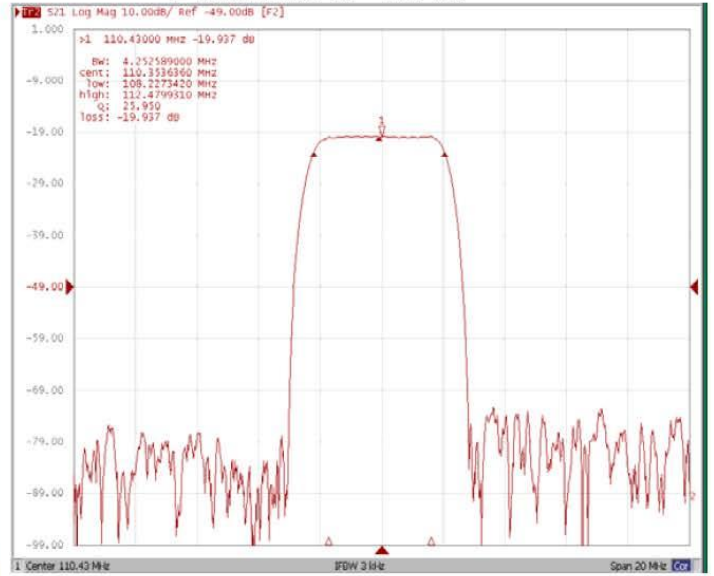


### Frequency Response:

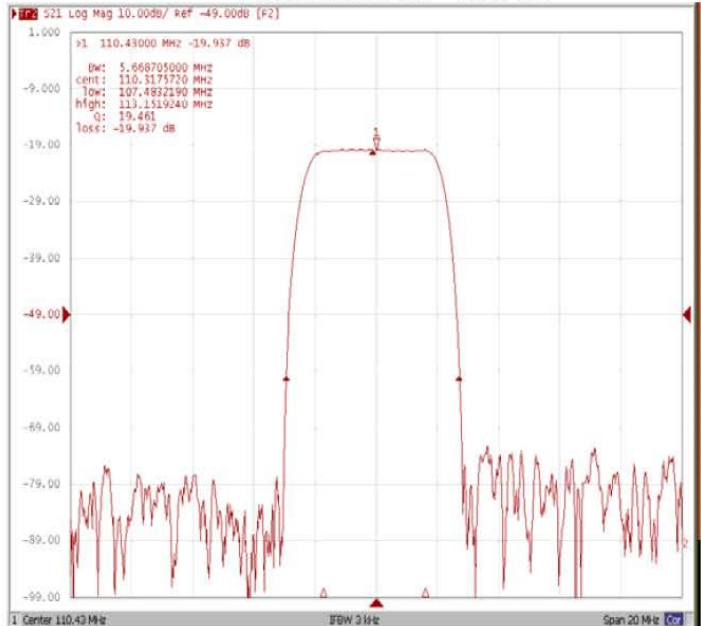
**Bandwidth at -1.0 dB**



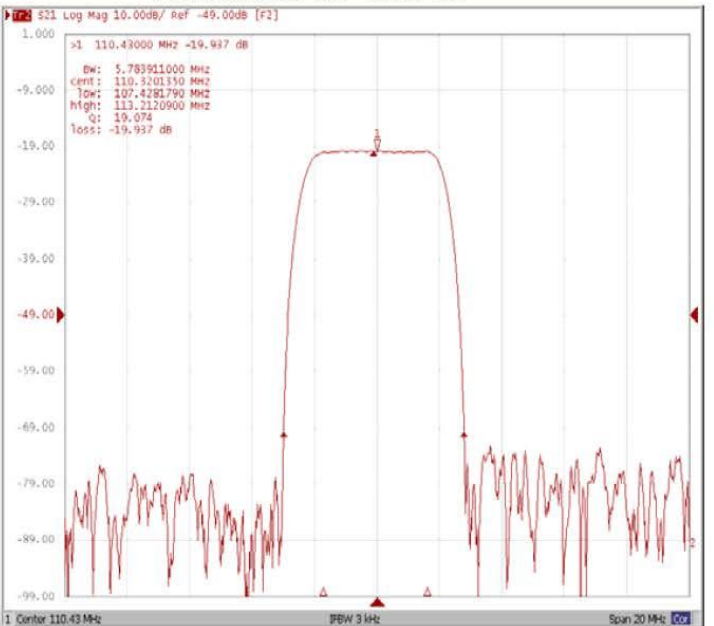
**Bandwidth at -3.0 dB**



**Bandwidth at -40.0 dB**



**Bandwidth at -50.0 dB**





# 110 MHz IF Saw Filter 3 MHz Bandwidth

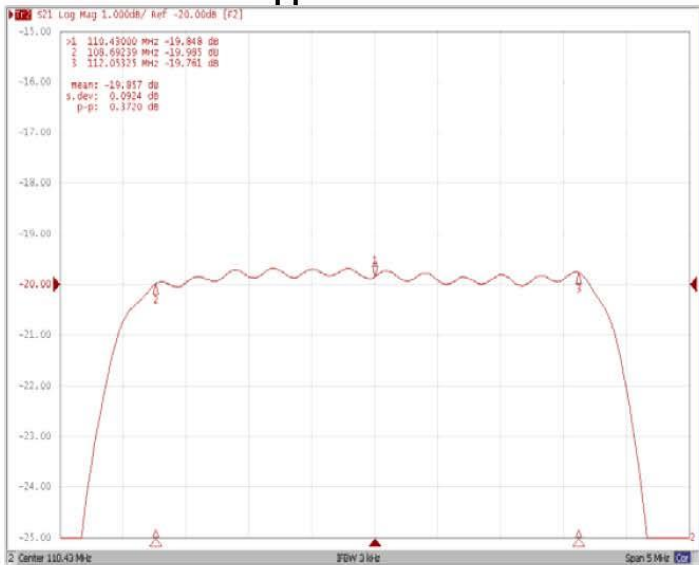
## Part Number: AM110S582



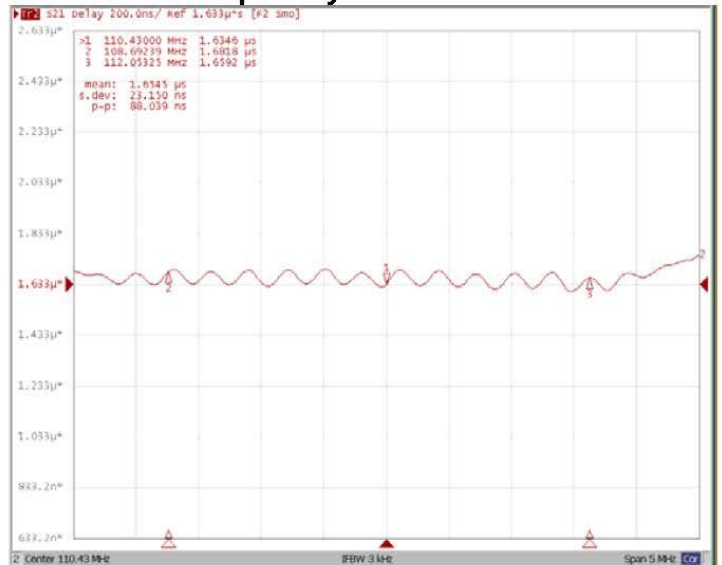
**ANATECH ELECTRONICS INC**  
RF & Microwave Filters & Products

### Frequency Response:

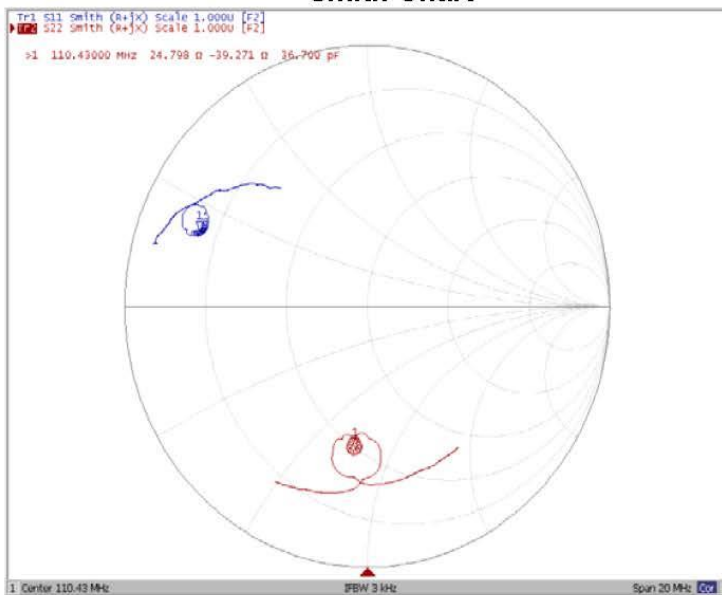
#### Ripple Variation



#### Group Delay Variation



#### Smith Chart



#### VSWR

