



# 110 MHz IF Saw Filter 20 MHz Bandwidth

## Part Number: AM110S584

**ANATECH ELECTRONICS INC**  
RF & Microwave Filters & Products



Parameters Description	Unit	Minimum	Typical	Maximum
Center Frequency (Fo)	MHz	110.0	110.10	100.20
Insertion Loss at Fo	dB	-	21.50	24.00
Passband Ripple	dB	-	0.80	1.00
Group Delay Variation	nsec	-	30	50
Absolute Delay at Fo	usec	-	1.57	-
Bandwidth at -1.0 dB	MHz	20.20	20.35	-
Bandwidth at -3.0 dB	MHz	-	20.74	-
Bandwidth at -40.0 dB	MHz	-	22.39	22.45
Temperature Coefficient	ppm/°C	-	-72	-
Ultimate Attenuation	dB	50	52	-

Parameters Description	Unit	Minimum	Typical	Maximum
Operation Temperature Range	°C	-	+25	-
Storage Temperature Range	°C	-20	-	+70
Maximum DC Voltage	V	-	-	10
Maximum Input Power	dBm	-	-	10
Source Impedance (Single Ended) <sub>1</sub>	Ω	-	50	-
Load Impedance (Single Ended) <sub>1</sub>	Ω	-	50	-
Package Size and Type	13.3 x 6.5 x 1.8 mm		V	



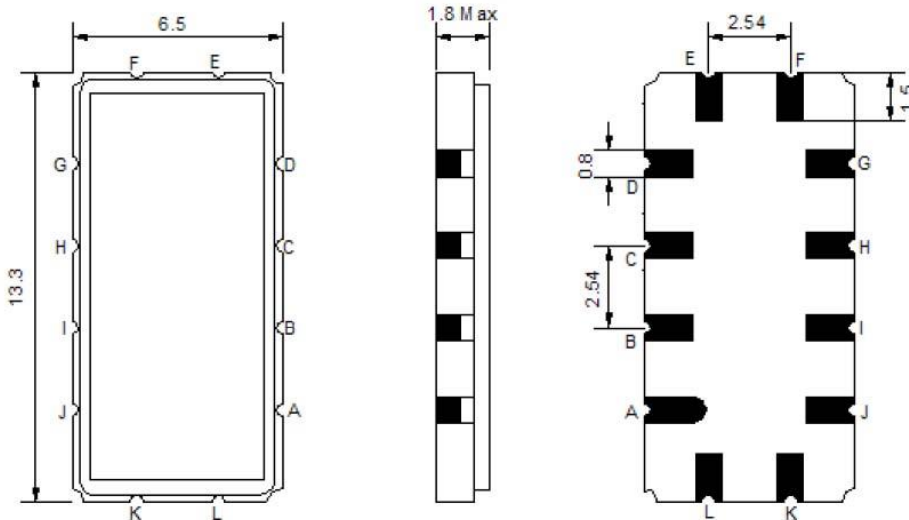
# 110 MHz IF Saw Filter 20 MHz Bandwidth

## Part Number: AM110S584



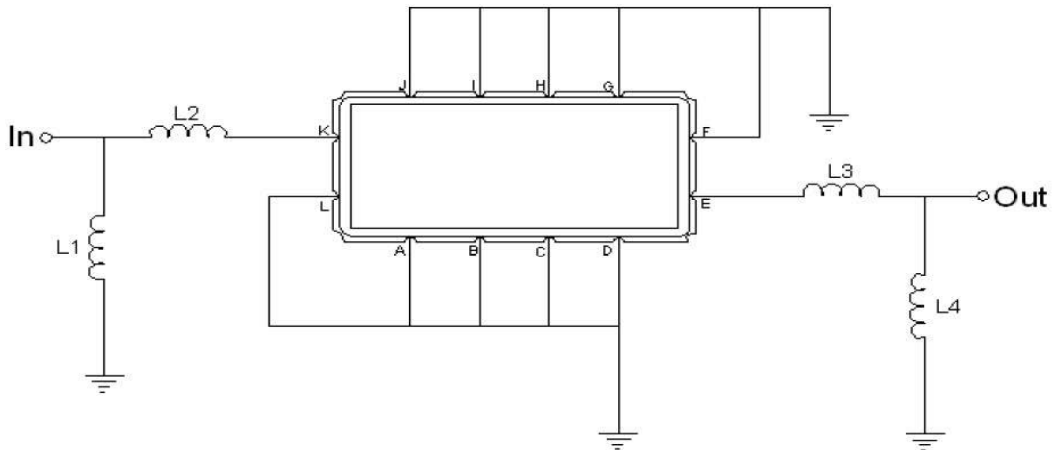
**ANATECH ELECTRONICS INC**  
RF & Microwave Filters & Products

### Outline Drawing:



Pin Description	
Ground	A B C D F G H I J L
Input	K
Output	E

### Testing Environment:



Test Fixture & Values	
Input	L1=180 nH, L2=18nH
Output	L3=18nH, L4=180nH
Source/Load Impedance	50 Ω



# 110 MHz IF Saw Filter 20 MHz Bandwidth

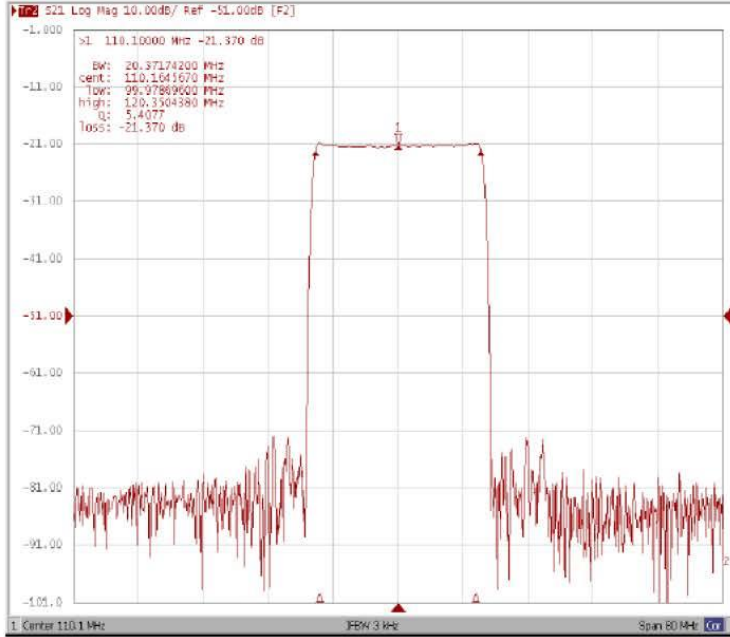
## Part Number: AM110S584



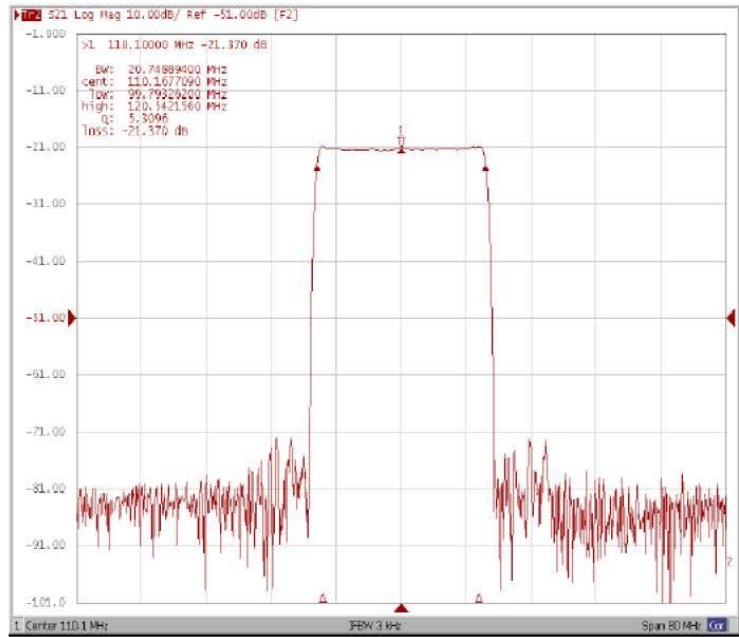
**ANATECH ELECTRONICS INC**  
RF & Microwave Filters & Products

### Frequency Response:

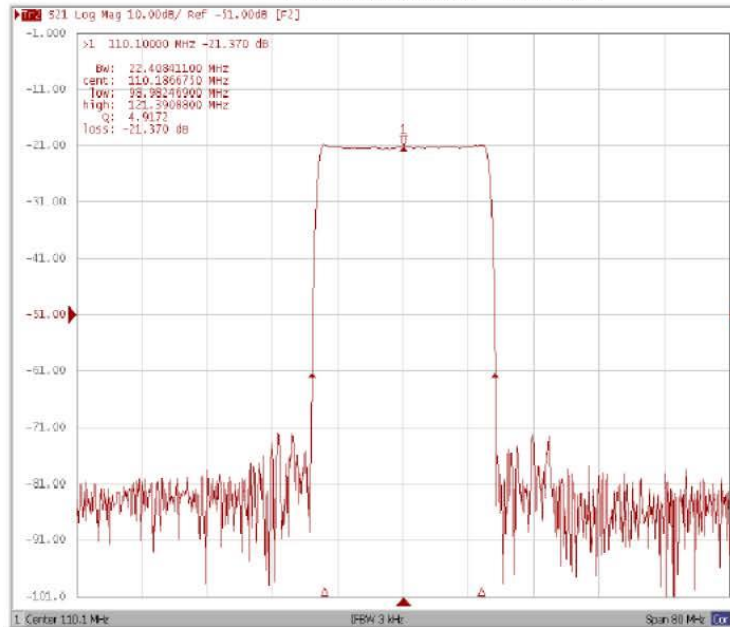
#### Bandwidth at -1.0 dB



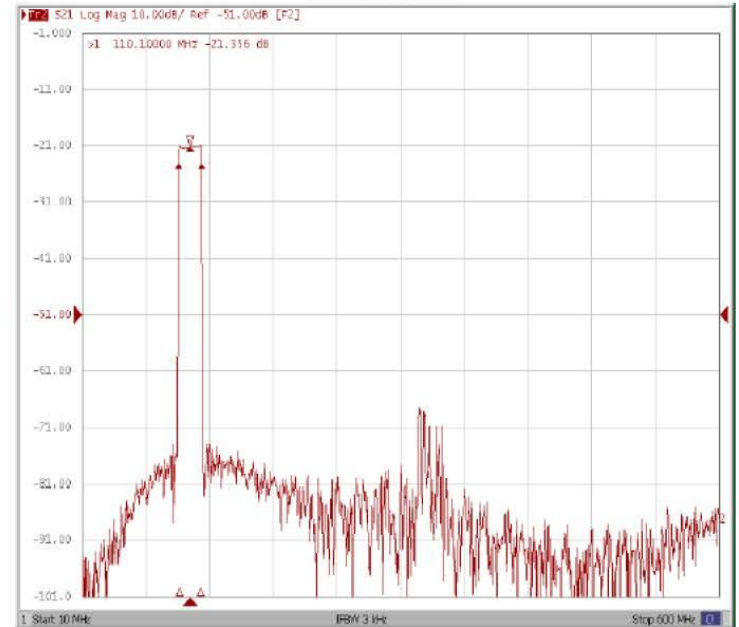
#### Bandwidth at -3.0 dB



#### Bandwidth at -40.0 dB



#### Wide-Band





# 110 MHz IF Saw Filter 20 MHz Bandwidth

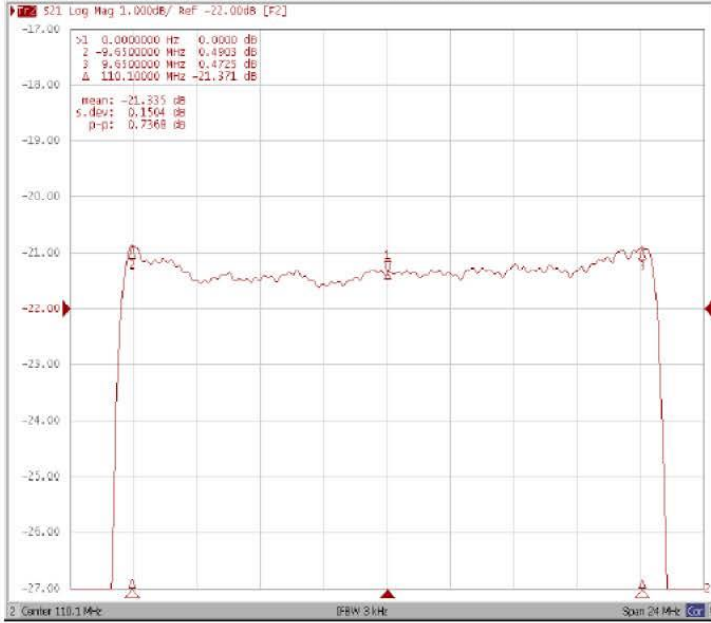
## Part Number: AM110S584



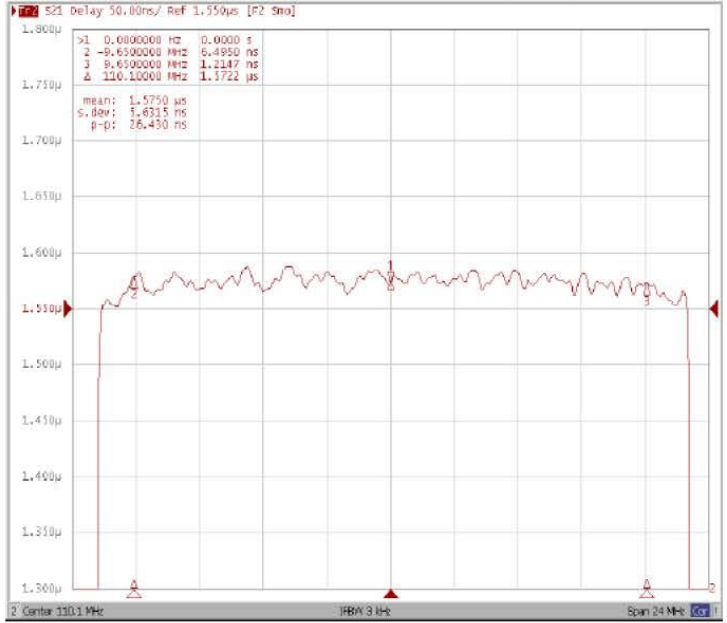
**ANATECH ELECTRONICS INC**  
RF & Microwave Filters & Products

### Frequency Response:

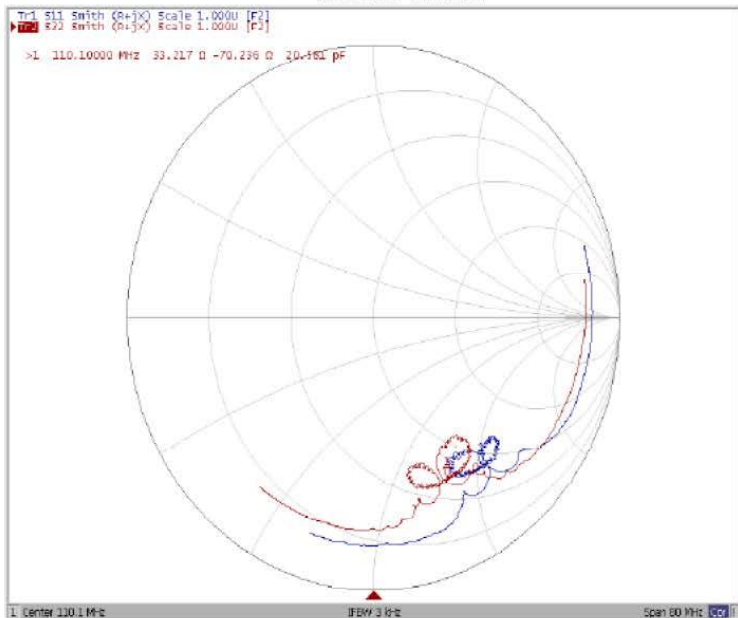
#### Ripple Variation Fo±9.65MHz



#### Group Delay Variation Fo±9.65MHz



#### Smith Chart



#### VSWR

