



ANATECH ELECTRONICS INC
RF & Microwave Filters & Products

110 MHz IF Saw Filter 20 MHz Bandwidth

Part Number: AM110S757



Parameters Description	Unit	Minimum	Typical	Maximum
Center Frequency (Fo)	MHz	-	110.00	-
Insertion Loss at Fo	dB	-	20.00	23.0
Passband Ripple (Fo ± 9.75 MHz)	dB	-	0.54	1.00
Group Delay Variation (Fo ± 9.75 MHz)	nsec	-	40	80
Absolute Delay at Fo	usec	-	2.38	-
Bandwidth at -1.0 dB	MHz	-	20.27	-
Bandwidth at -3.0 dB	MHz	-	20.54	-
Bandwidth at -40.0 dB	MHz	-	21.73	-
Temperature Coefficient	ppm/°C	-	-72	-
Ultimate Attenuation	dB	-	52	-

Parameters Description	Unit	Minimum	Typical	Maximum
Operation Temperature Range	°C	0	-	+60
Storage Temperature Range	°C	-30	-	+80
Maximum DC Voltage	V	-	-	10
Maximum Input Power	dBm	-	-	10
Source Impedance (Single Ended) ₁	Ω	-	50	-
Load Impedance (Single Ended) ₁	Ω	-	50	-
Package Size and Type	20.0 x 9.8 x 1.8 mm		D1	



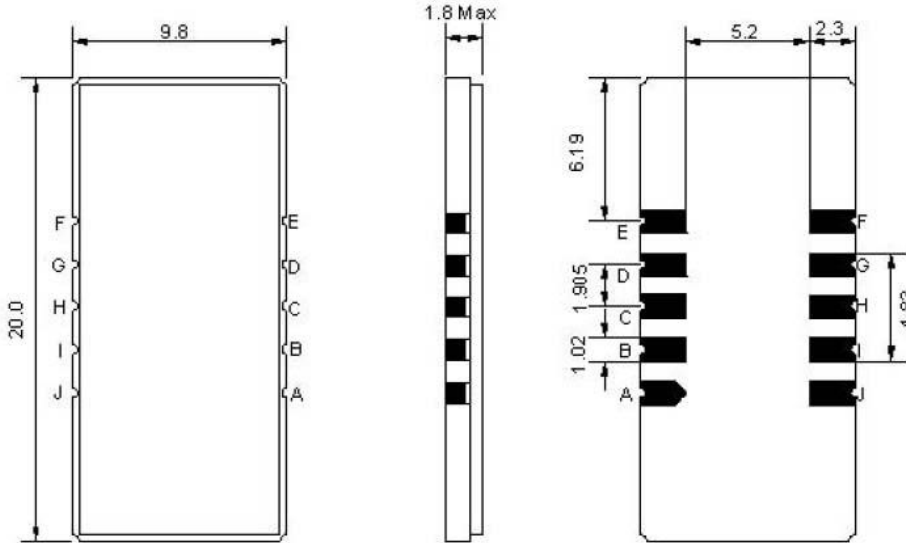
110 MHz IF Saw Filter 20 MHz Bandwidth

Part Number: AM110S757



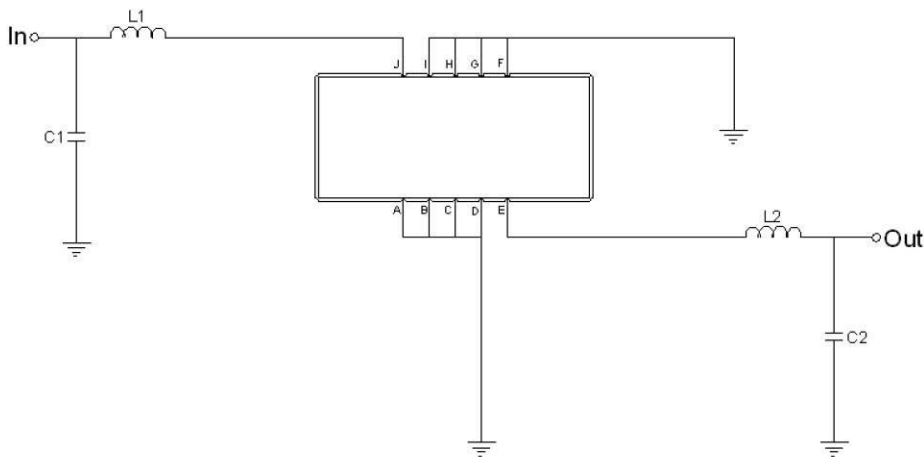
ANATECH ELECTRONICS INC
RF & Microwave Filters & Products

Outline Drawing:



Pin Description	
Ground	A B C D F G H I
Input	J
Output	E

Testing Environment:



Test Fixture & Values	
Input	L1=68nH, C1=18pF
Output	L2=68nH, C2=22pF
Source/Load Impedance	50 Ω



110 MHz IF Saw Filter 20 MHz Bandwidth

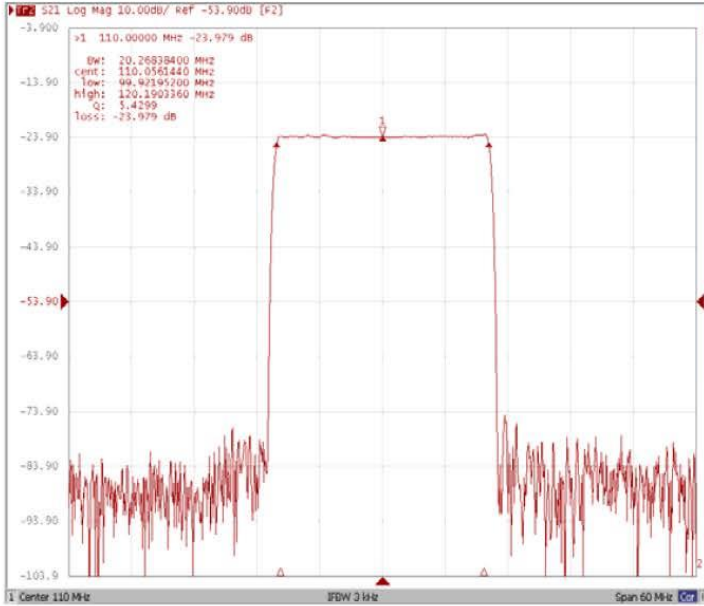
Part Number: AM110S757



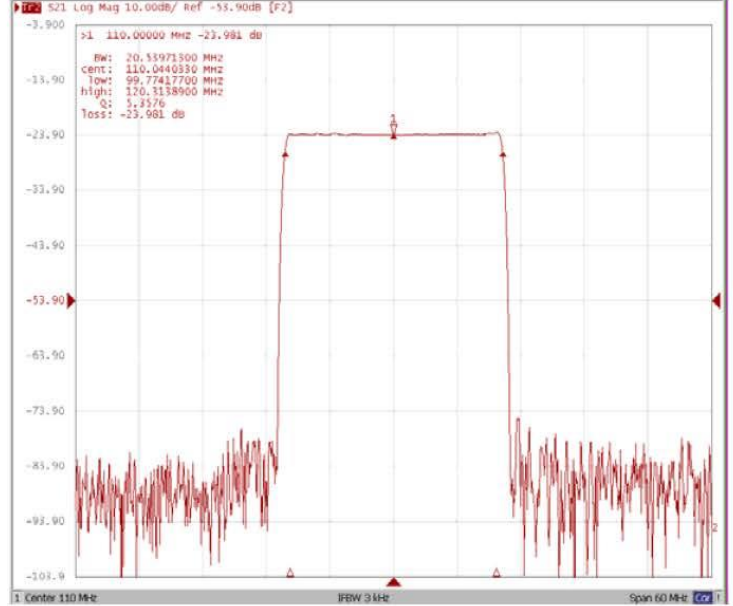
ANATECH ELECTRONICS INC
RF & Microwave Filters & Products

Frequency Response:

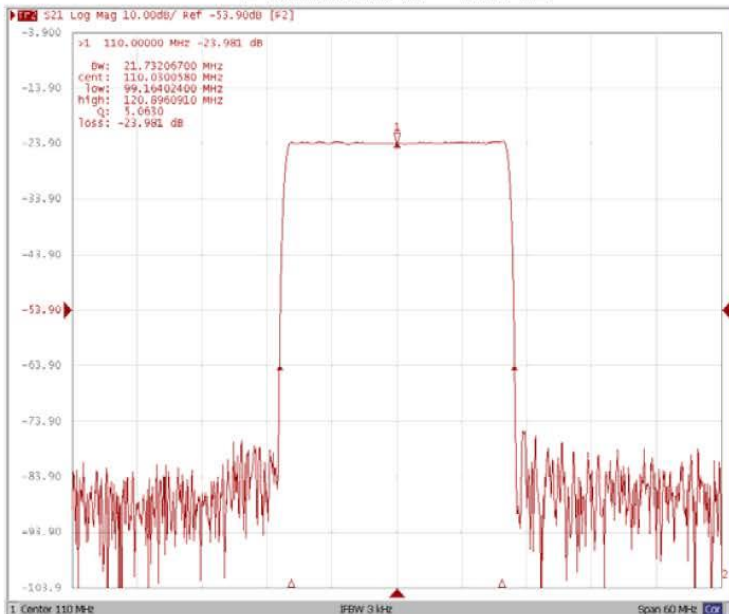
Bandwidth at -1.0 dB



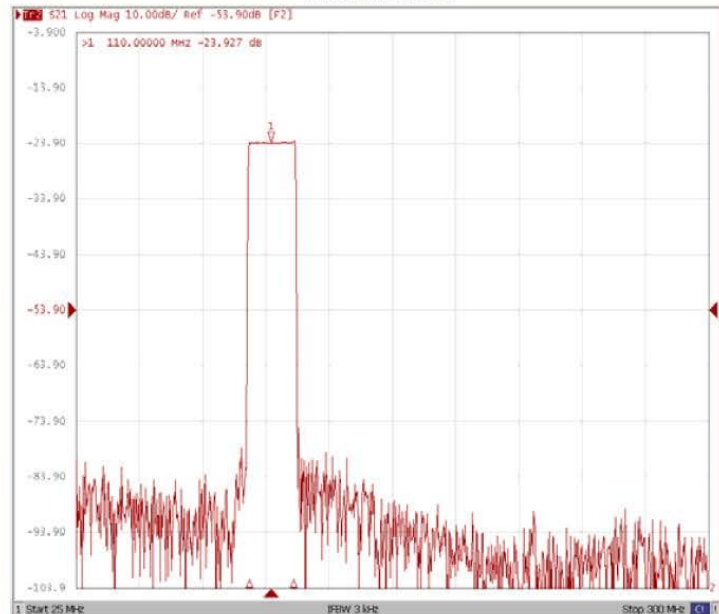
Bandwidth at -3.0 dB



Bandwidth at -40.0 dB



Wide Band





110 MHz IF Saw Filter 20 MHz Bandwidth

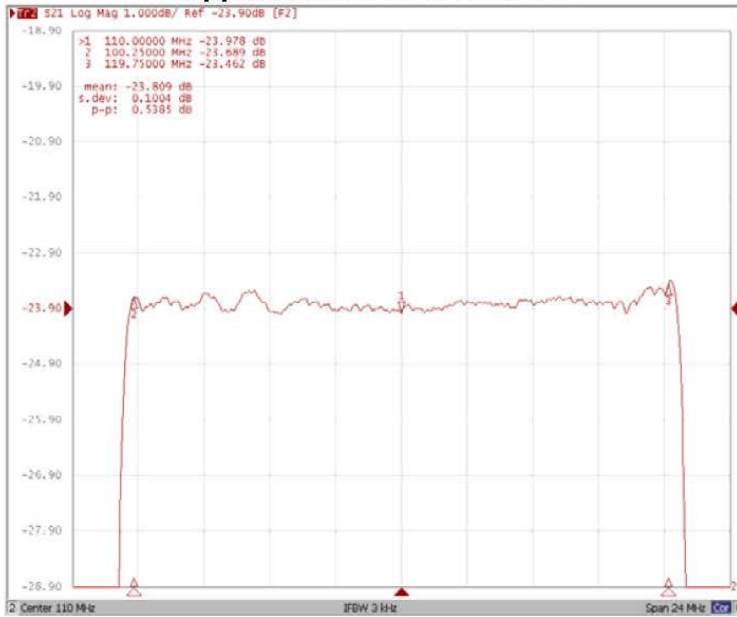
Part Number: AM110S757



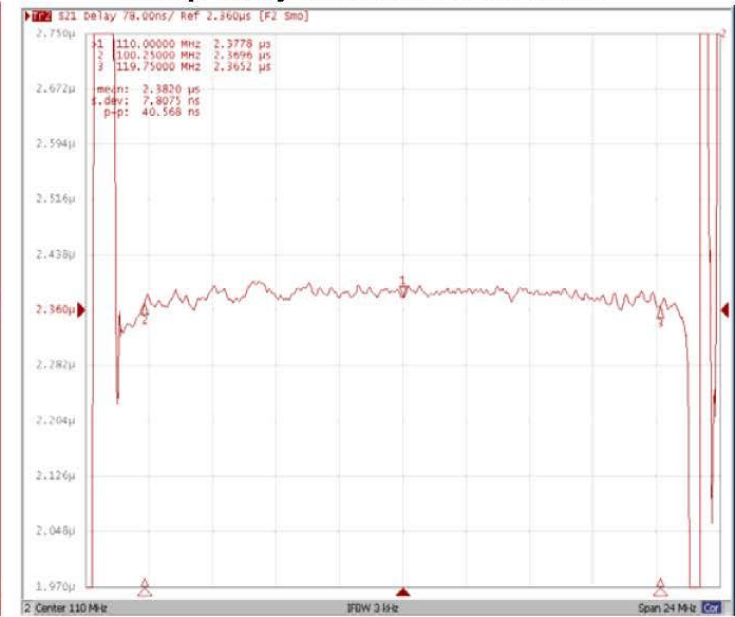
ANATECH ELECTRONICS INC
RF & Microwave Filters & Products

Frequency Response:

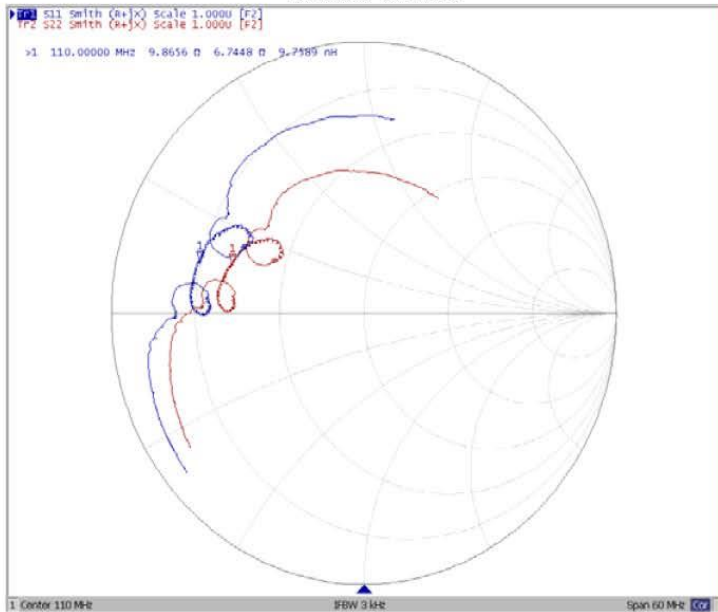
Ripple Variation Fo±9.75MHz



Group Delay Variation Fo±9.75MHz



Smith Chart



VSWR

