



# 115 MHz IF Saw Filter 7 MHz Bandwidth

## Part Number: AM115S587



**ANATECH ELECTRONICS INC**  
RF & Microwave Filters & Products

Parameters Description	Unit	Minimum	Typical	Maximum
Center Frequency (Fo)	MHz	-	115.0	-
Insertion Loss at Fo	dB	-	22.5	25.0
Passband Ripple Variation at Fo ± 3.5 MHz	dB	-	0.50	1.0
Group Delay Variation at Fo ± 3.5 MHz	nsec	-	80	150
Absolute Delay at Fo	usec	-	3.20	-
Bandwidth at -1.0 dB	MHz	-	7.28	-
Bandwidth at -10.0 dB	MHz	-	8.08	-
Bandwidth at -20.0 dB	MHz	-	8.44	-
Bandwidth at -25.0 dB	MHz	-	8.56	-
Bandwidth at -35.0 dB	MHz	-	8.75	-
Temperature Coefficient	ppm/°C	-	-20	-
Ultimate Attenuation	dB	48	52	-

Parameters Description	Unit	Minimum	Typical	Maximum
Operation Temperature Range	°C	-	+25	-
Storage Temperature Range	°C	-40	-	+85
Maximum DC Voltage	V	-	-	10
Maximum Input Power	dBm	-	-	10
Source Impedance (Single Ended) <sub>1</sub>	Ω	-	50	-
Load Impedance (Single Ended) <sub>1</sub>	Ω	-	50	-
Package Size and Type	20.0 x 9.8 x 1.8 mm		D1	



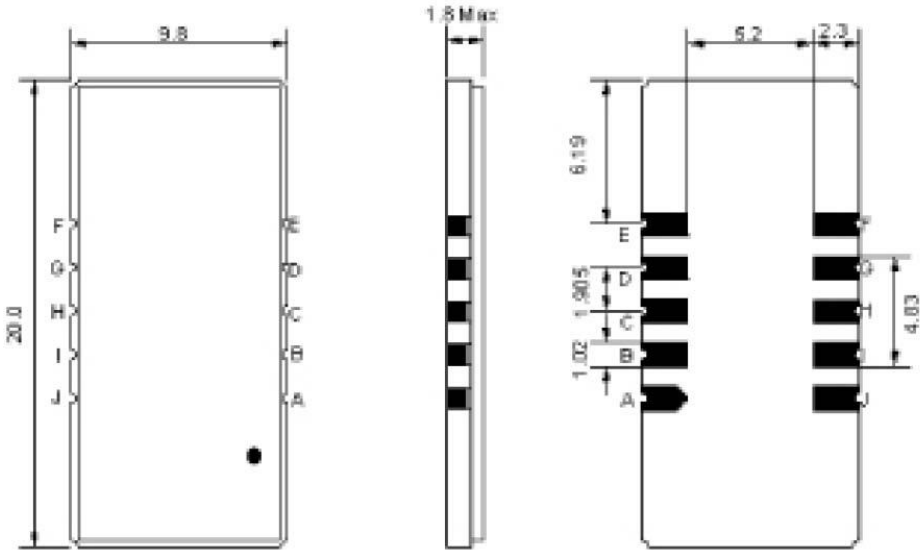
# 115 MHz IF Saw Filter 7 MHz Bandwidth

Part Number: AM115S587



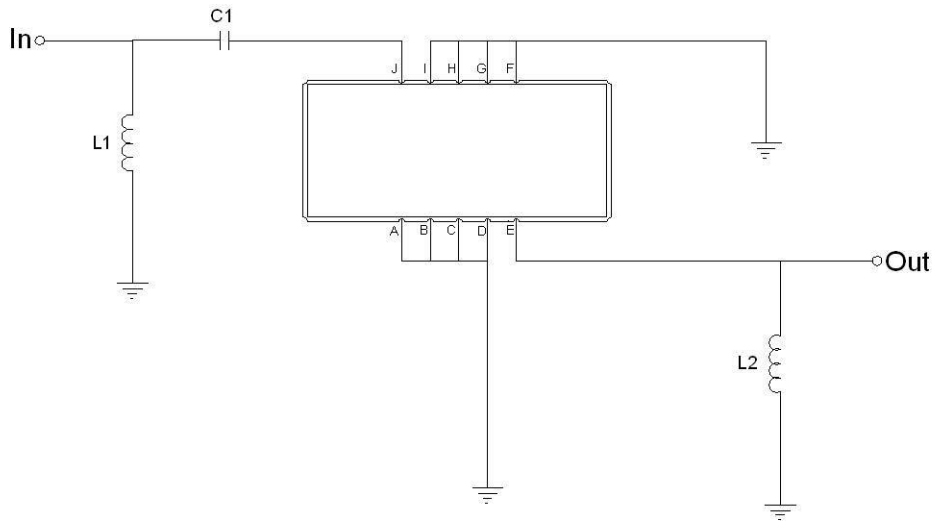
**ANATECH ELECTRONICS INC**  
RF & Microwave Filters & Products

## Outline Drawing:



Pin Description	
Ground	A B C D F G H I
Input	J
Output	E

## Testing Environment:



Test Fixture & Values	
Input	L1 = 33 nH , C1 = 220 pF
Output	L2 = 47 nH ,
Source/Load Impedance	50 Ω



# 115 MHz IF Saw Filter 7 MHz Bandwidth

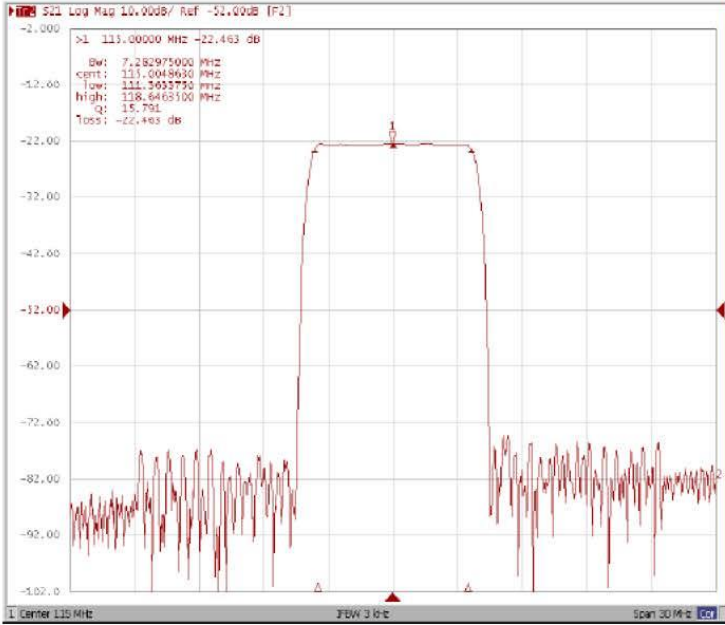
## Part Number: AM115S587



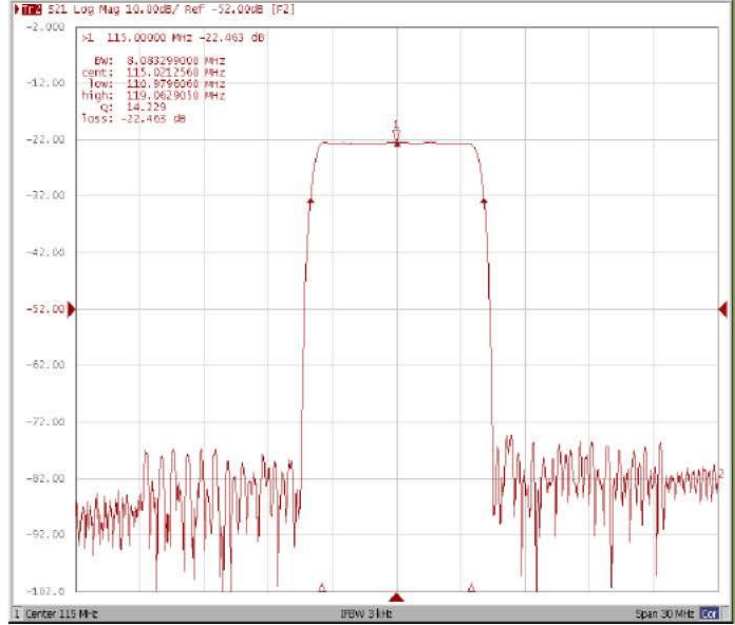
**ANATECH ELECTRONICS INC**  
RF & Microwave Filters & Products

### Frequency Response:

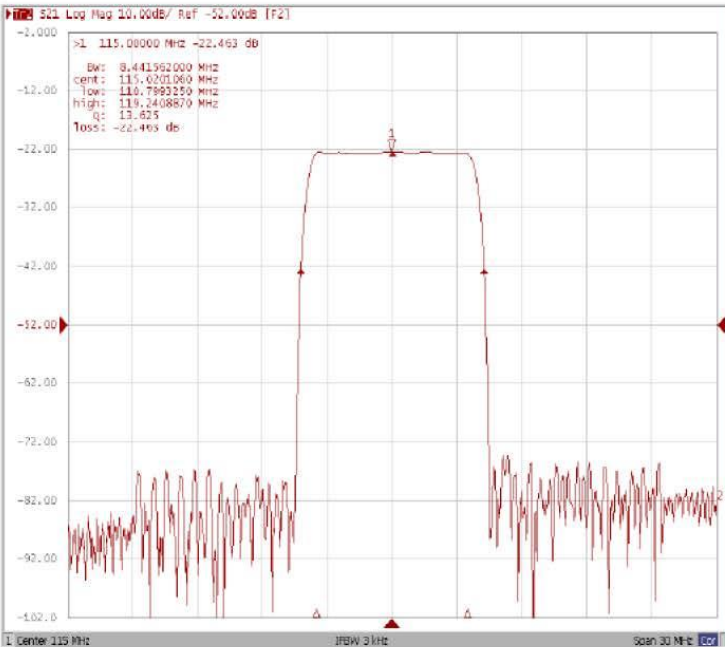
#### Bandwidth at -1.0 dB



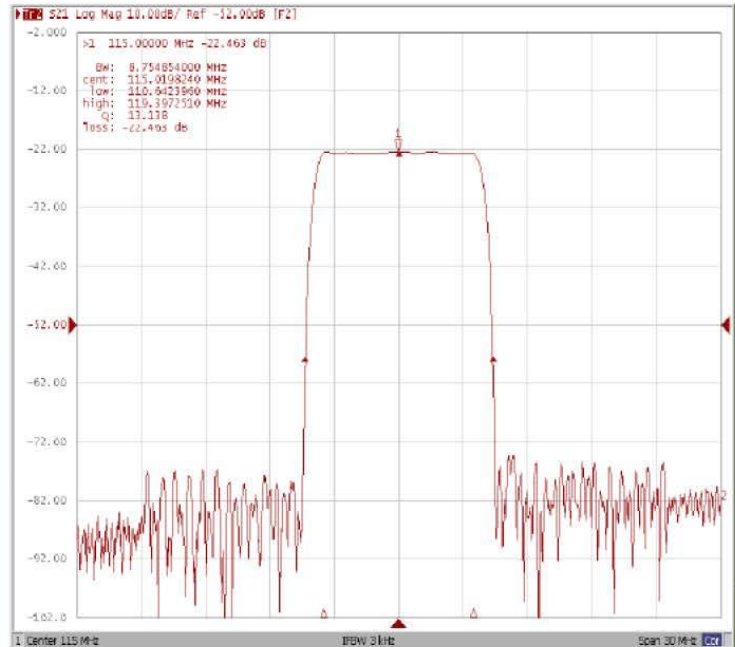
#### Bandwidth at -10.0 dB



#### Bandwidth at -20.0 dB



#### Bandwidth at -35.0 dB





# 115 MHz IF Saw Filter 7 MHz Bandwidth

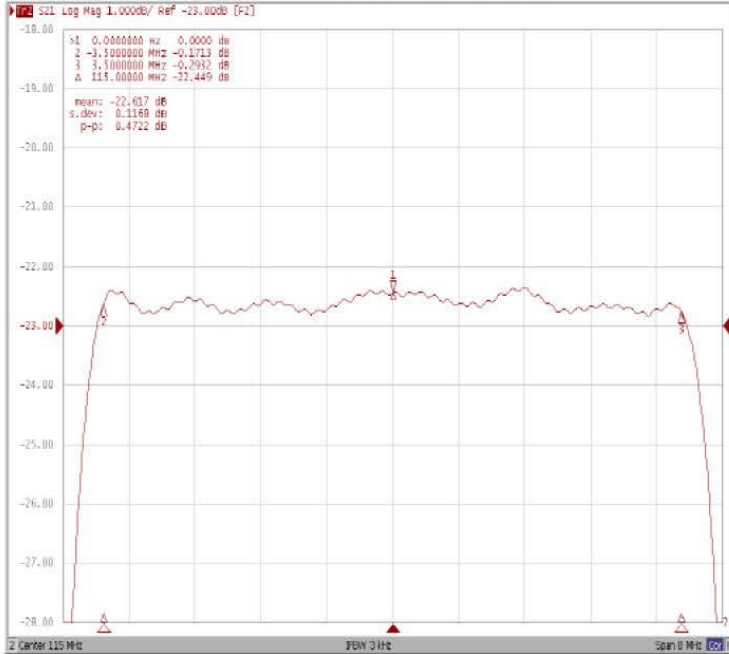
## Part Number: AM115S587



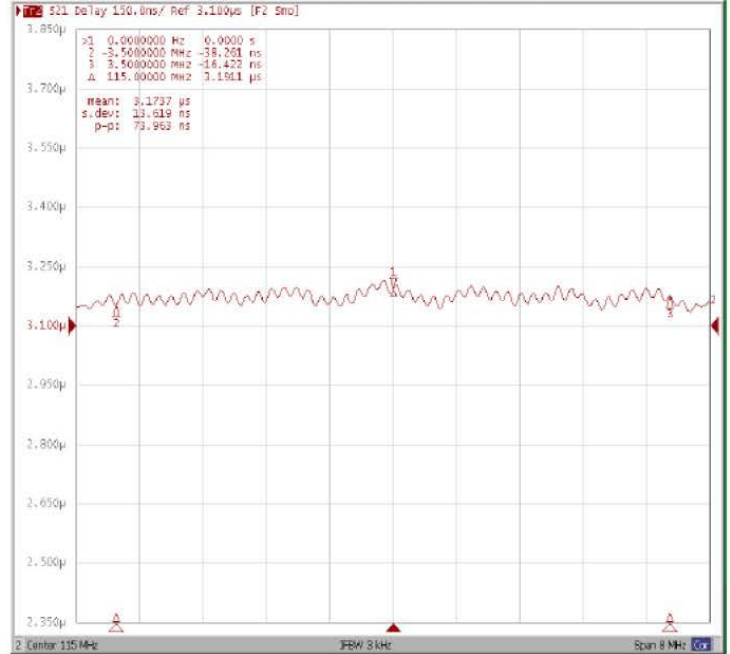
**ANATECH ELECTRONICS INC**  
RF & Microwave Filters & Products

### Frequency Response:

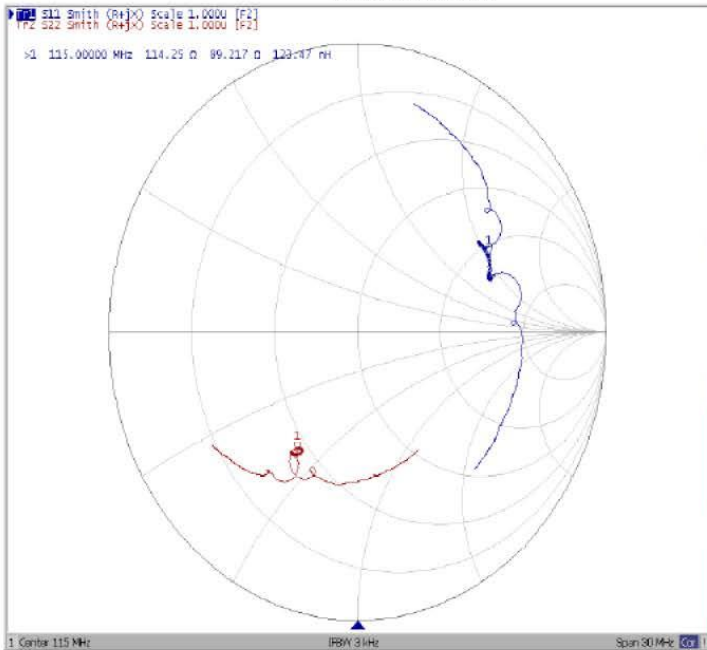
#### Ripple Variation Fo±3.5MHz



#### Group Delay Variation Fo±3.5MHz



#### Smith Chart



#### SWR

