



ANATECH ELECTRONICS INC
RF & Microwave Filters & Products

115 MHz IF Saw Filter 26 MHz Bandwidth

Part Number: AM115S591



Parameters Description	Unit	Minimum	Typical	Maximum
Center Frequency (Fo)	MHz	114.9	115.0	115.1
Insertion Loss at Fo	dB	-	22.0	24.0
Amplitude Ripple within Fo ± 12.49 MHz	dBp-p	-	0.65	1.0
Group Delay Variation within Fo ± 12.49 MHz	nsec	-	30	100
Absolute Delay at Fo	usec	-	1.64	-
Bandwidth at -1.0 dB	MHz	-	26.0	-
Bandwidth at -3.0 dB	MHz	26.1	26.5	-
Bandwidth at -40.0 dB	MHz	-	28.6	29.0
Lower Sidelobe	dB	50	55	-
Upper Sidelobe	dB	50	55	-
Temperature Coefficient	ppm/°C	-	-72	-

Parameters Description	Unit	Minimum	Typical	Maximum
Operation Temperature Range	°C	-30	-	+80
Storage Temperature Range	°C	-40	-	+85
Maximum DC Voltage	V	-	-	10
Maximum Input Power	dBm	-	-	10
Source Impedance (Single Ended) ₁	Ω	-	50	-
Load Impedance (Single Ended) ₁	Ω	-	50	-
Package Size and Type	20.0 x 9.8 x 5.2 mm		D1	



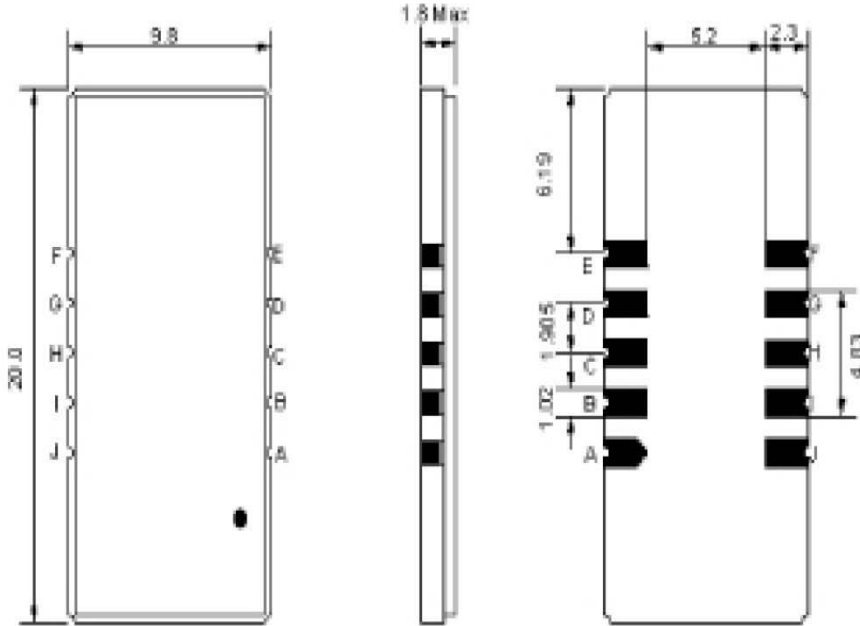
115 MHz IF Saw Filter 26 MHz Bandwidth

Part Number: AM115S591



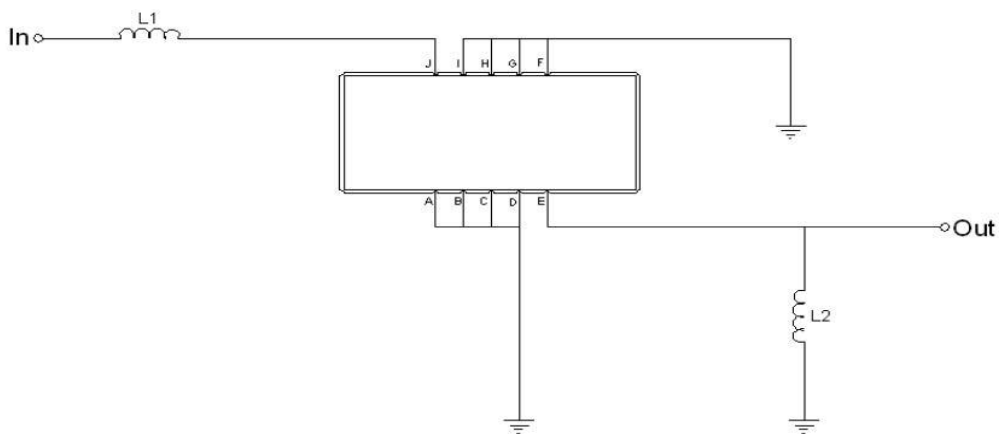
ANATECH ELECTRONICS INC
RF & Microwave Filters & Products

Outline Drawing:



Pin Description	
Ground	A B C D F G H I
Input	J
Output	E

Testing Environment:



Test Fixture & Values	
Input	L1= 82 nH
Output	L2= 56 nH
Source/Load Impedance	50 Ω



Frequency Response:

