



ANATECH ELECTRONICS INC
RF & Microwave Filters & Products

120.1 MHz Saw Filter

Part Number: AM120S272

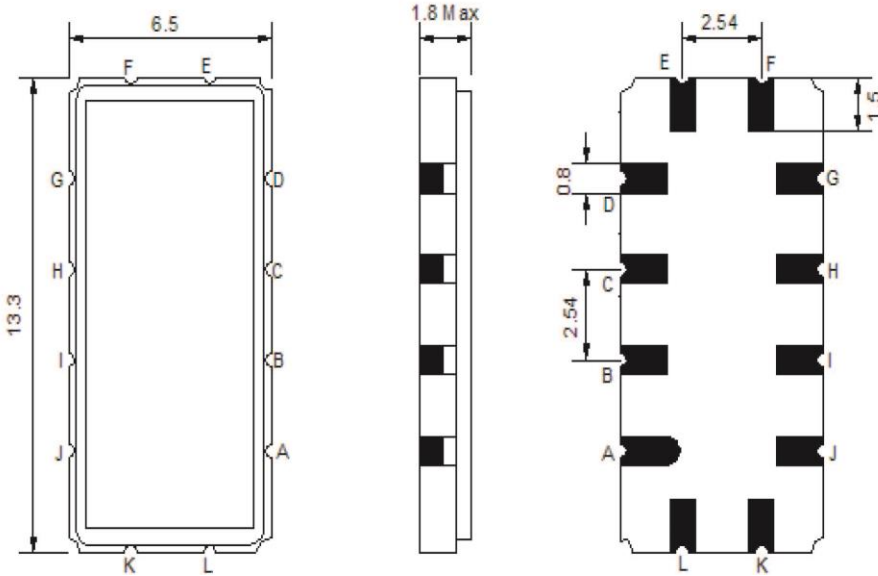


Parameters Description	Unit	Minimum	Typical	Maximum
Center Frequency (Fo)	MHz	120.05	120.1	120.20
Insertion Loss at Fo	dB	-	20.5	23.0
Amplitude Ripple Variation	dB _{p-p}	-	0.65	1.0
Group Delay Variation	nsec	-	50	80
Absolute Delay at Fo	usec	-	1.60	-
Bandwidth at -1.0 dB	MHz	19.80	19.96	-
Bandwidth at -3.0 dB	MHz	-	20.35	-
Bandwidth at -40.0 dB	MHz	-	22.02	22.20
Temperature Coefficient	ppm/°C	-	-72	-
Relative Attenuation:				
Fo ± 14.42 MHz	dB	-	55	-
Lower Sidelobe	dB	-	52	-
Upper Sidelobe	dB	-	52	-

Parameters Description	Unit	Minimum	Typical	Maximum
Operation Temperature Range	°C	-	+25	-
Storage Temperature Range	°C	-40	-	+85
Maximum DC Voltage	V	-	-	10
Maximum Input Power	dBm	-	-	10
Source Impedance (Single Ended) ₁	Ω	-	50	-
Load Impedance (Single Ended) ₁	Ω	-	50	-
Package Size and Type	13.3 x 6.5 x 1.8 mm		V	

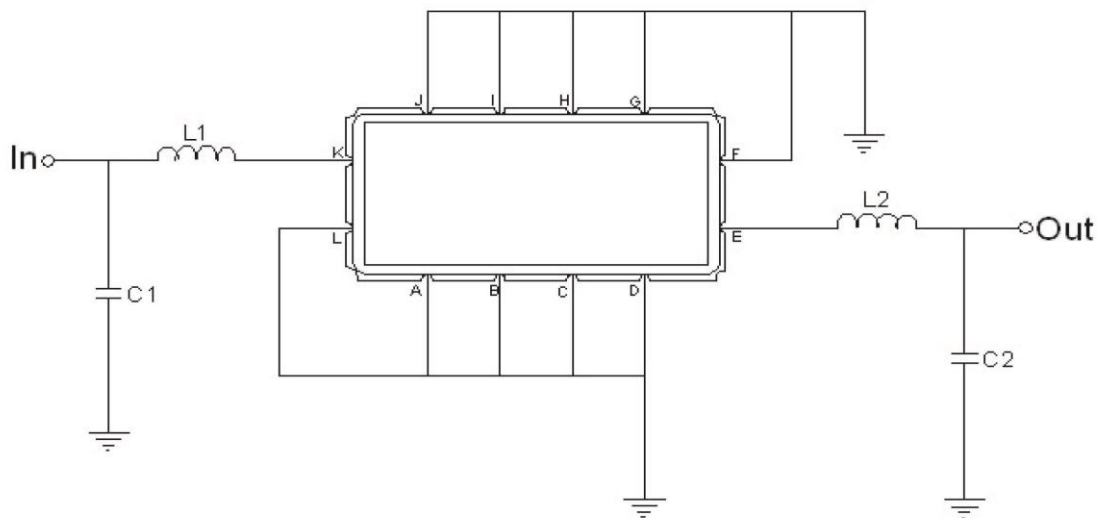


Outline Drawing:



Pin Description	
Ground	A B C D F G H I J L
Input	K
Output	E

Testing Environment:



Test Fixture & Values	
Input	L1=100nH , C1=10pF
Output	L2=47nH , C2=16pF
Source/Load Impedance	50



ANATECH ELECTRONICS INC
RF & Microwave Filters & Products

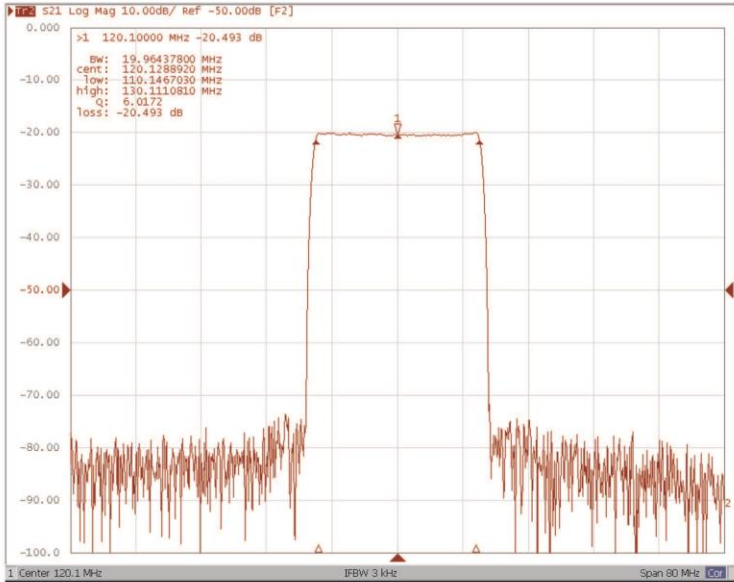
120.1 MHz Saw Filter

Part Number: AM120S272

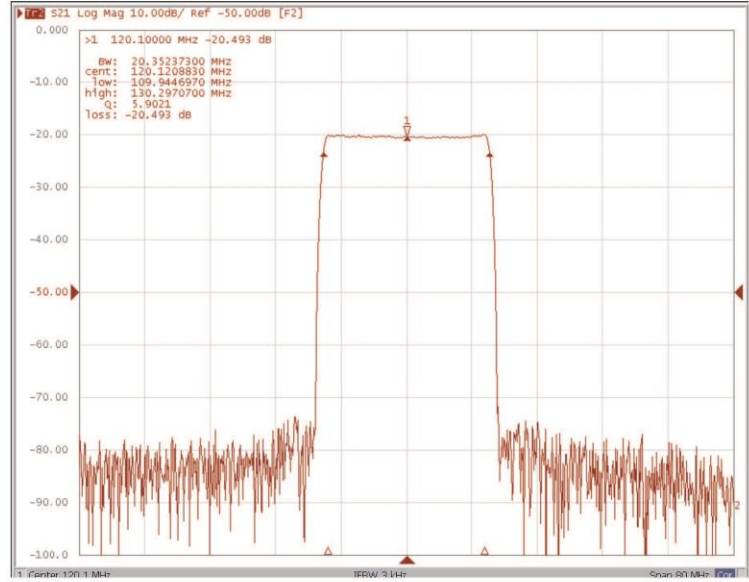


Frequency Response:

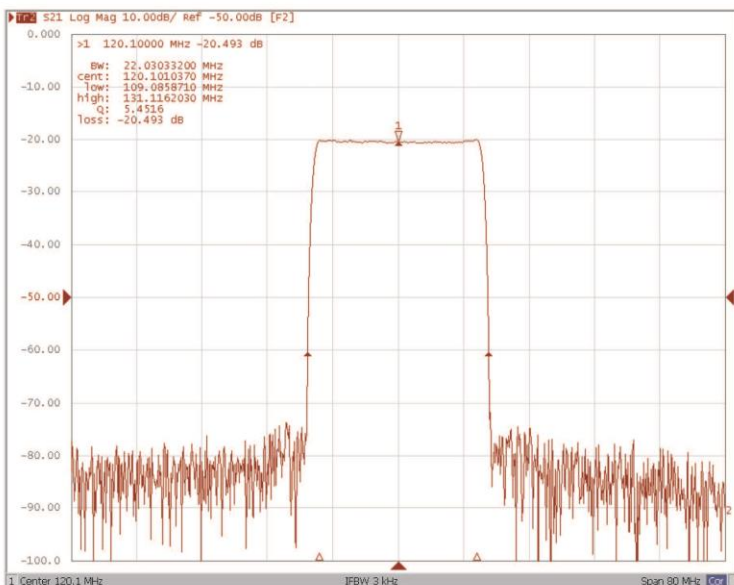
Bandwidth at -1.0 dB



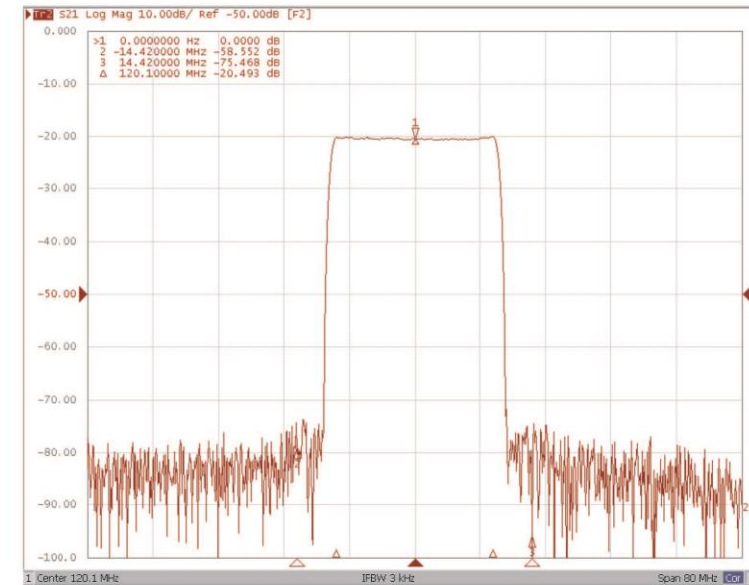
Bandwidth at -3.0 dB



Bandwidth at -40.0 dB



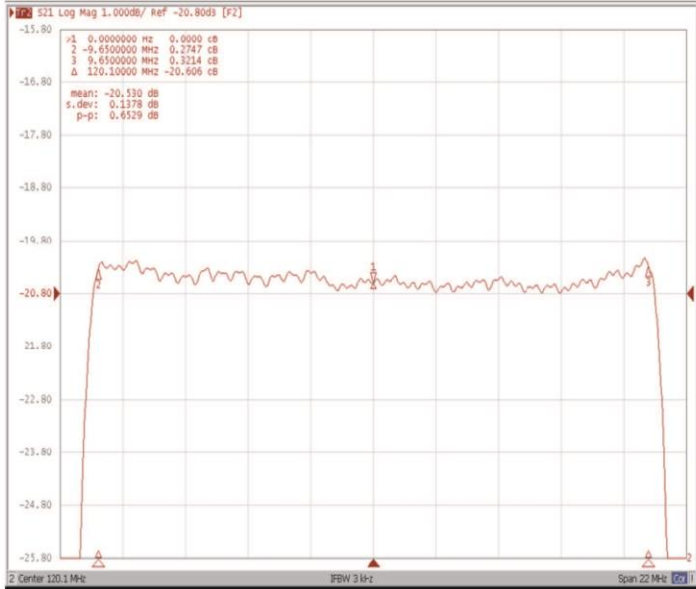
Attenuation Fo +/- 14.42 MHz



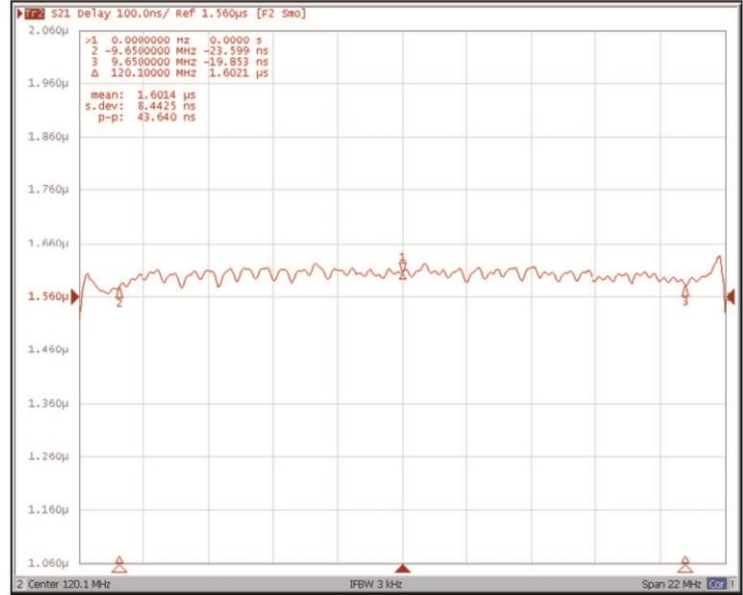


Frequency Response:

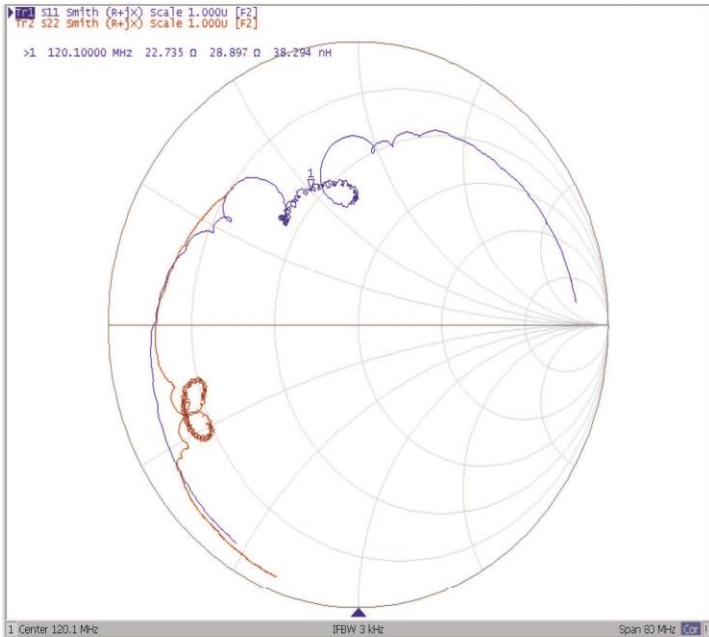
Ripple Variation Fo +/- 9.65 MHz



Group Delay Variation Fo +/- 9.65 MHz



Smith Chart



VSWR

