



# 120 MHz IF Saw Filter 11 MHz Bandwidth

## Part Number: AM120S594

**ANATECH ELECTRONICS INC**  
RF & Microwave Filters & Products



Parameters Description	Unit	Minimum	Typical	Maximum
Center Frequency (Fo)	MHz	119.9	120.0	120.1
Insertion Loss at Fo	dB	-	25.7	27.0
Amplitude Ripple Variation at Fo ± 5.5 MHz	dBp-p	-	0.5	1.0
Group Delay Variation at Fo ± 5.5 MHz	nsec	-	45	100
Absolute Delay at Fo	usec	-	2.34	-
Bandwidth at -1.0 dB	MHz	-	11.55	-
Bandwidth at -3.0 dB	MHz	11.70	11.93	-
Bandwidth at -30.0 dB	MHz	-	13.10	-
Bandwidth at -45.0 dB	MHz	-	13.40	14.00
Temperature Coefficient	ppm/°C	-	-72	-
Lower Sidelobe	dB	50	55	-
Upper Sidelobe	dB	50	55	-

Parameters Description	Unit	Minimum	Typical	Maximum
Operation Temperature Range	°C	-30	-	+80
Storage Temperature Range	°C	-40	-	+85
Maximum DC Voltage	V	-	-	10
Maximum Input Power	dBm	-	-	10
Source Impedance (Single Ended) <sub>1</sub>	Ω	-	50	-
Load Impedance (Single Ended) <sub>1</sub>	Ω	-	50	-
Package Size and Type	20.0 x 9.8 x 1.8 mm		D1	



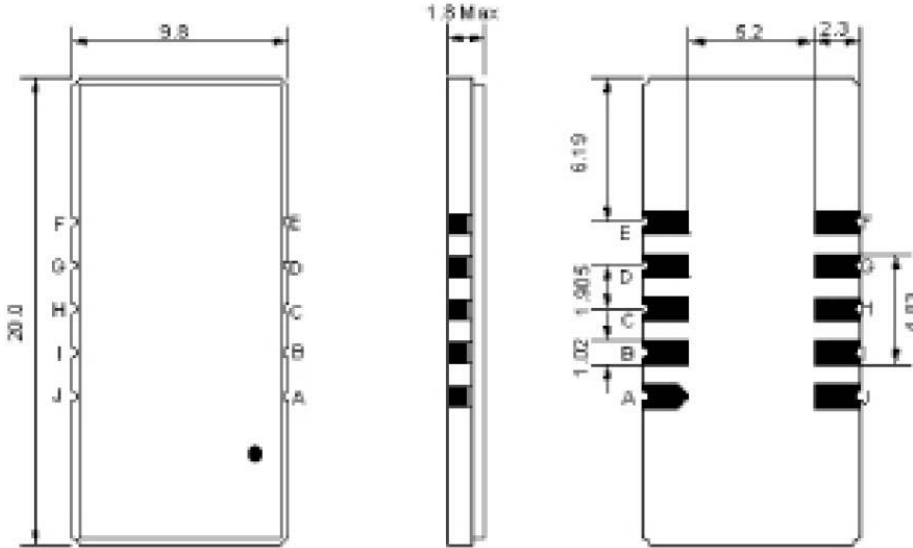
# 120 MHz IF Saw Filter 11 MHz Bandwidth

## Part Number: AM120S594



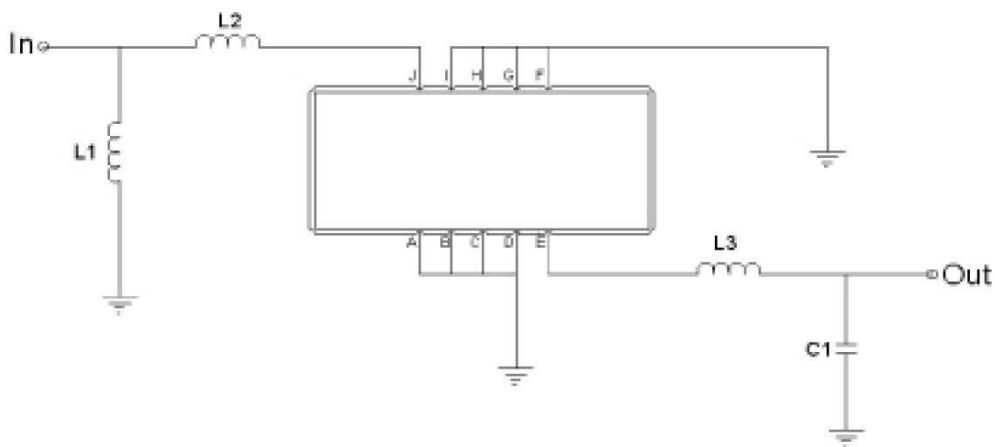
**ANATECH ELECTRONICS INC**  
RF & Microwave Filters & Products

### Outline Drawing:



Pin Description	
Ground	A B C D F G H I
Input	J
Output	E

### Testing Environment:



Test Fixture & Values	
Input	L1=39nH, L2=12nH
Output	L3=47nH, C1=33pF
Source/Load Impedance	50 Ω



# 120 MHz IF Saw Filter 11 MHz Bandwidth

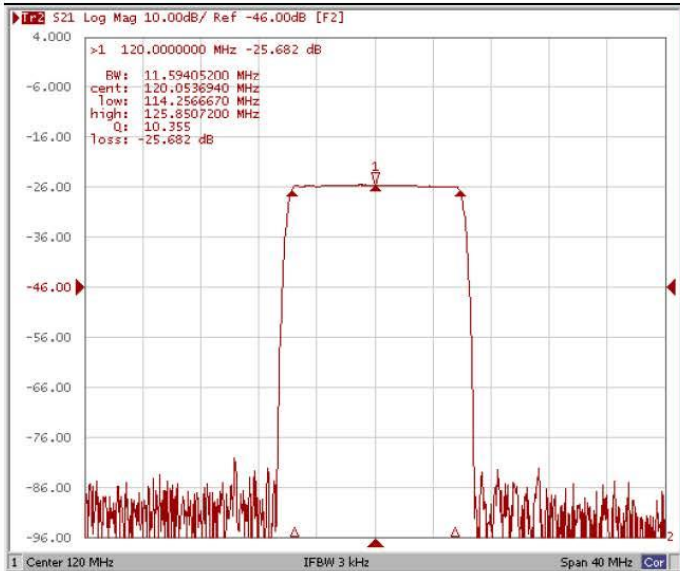
## Part Number: AM120S594



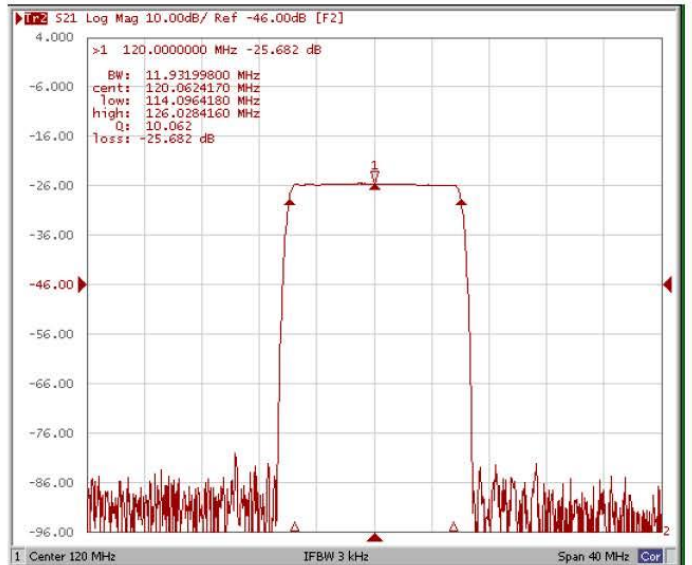
**ANATECH ELECTRONICS INC**  
RF & Microwave Filters & Products

### Frequency Response:

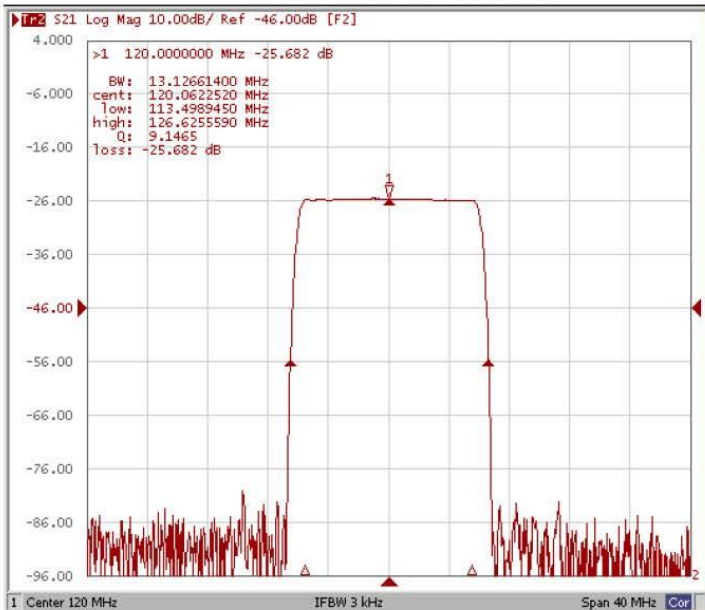
#### Bandwidth at -1.0 dB



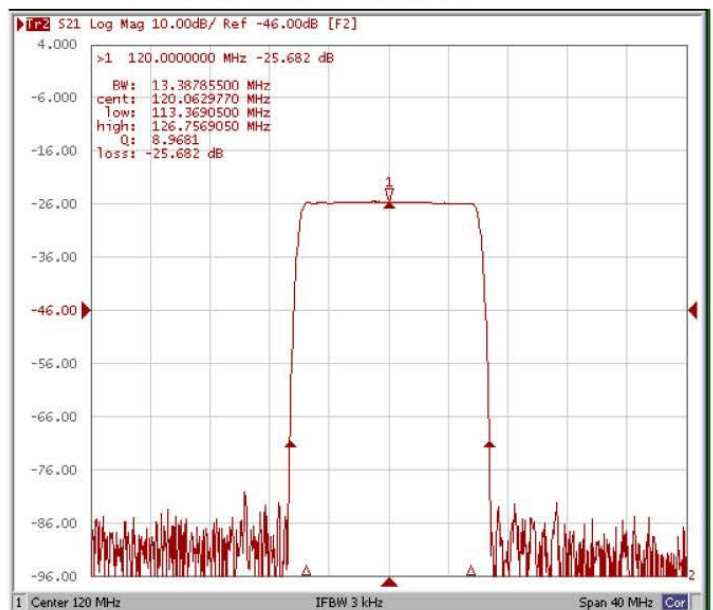
#### Bandwidth at -3.0 dB



#### Bandwidth at -30.0 dB



#### Bandwidth at -45.0 dB





# 120 MHz IF Saw Filter 11 MHz Bandwidth

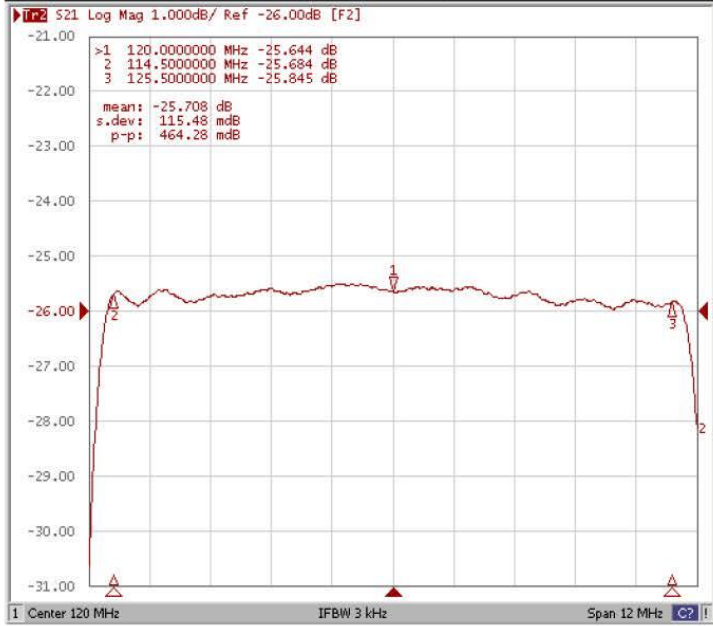
## Part Number: AM120S594



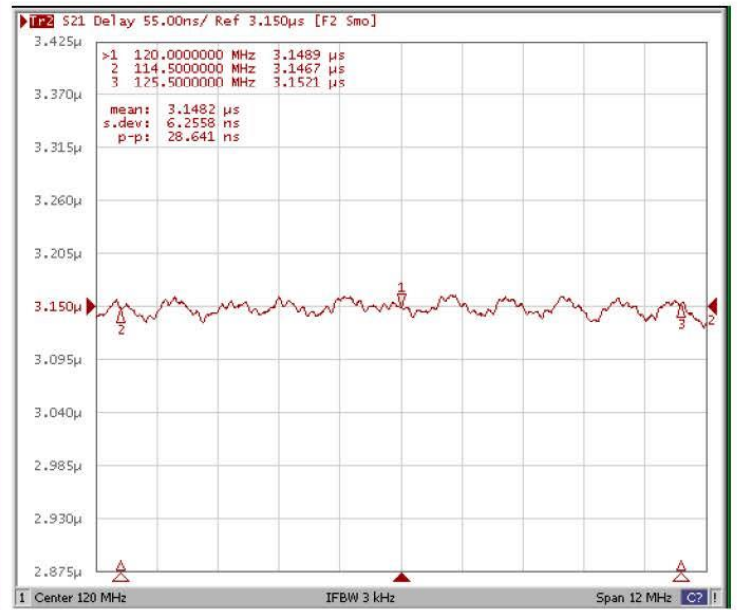
**ANATECH ELECTRONICS INC**  
RF & Microwave Filters & Products

### Frequency Response:

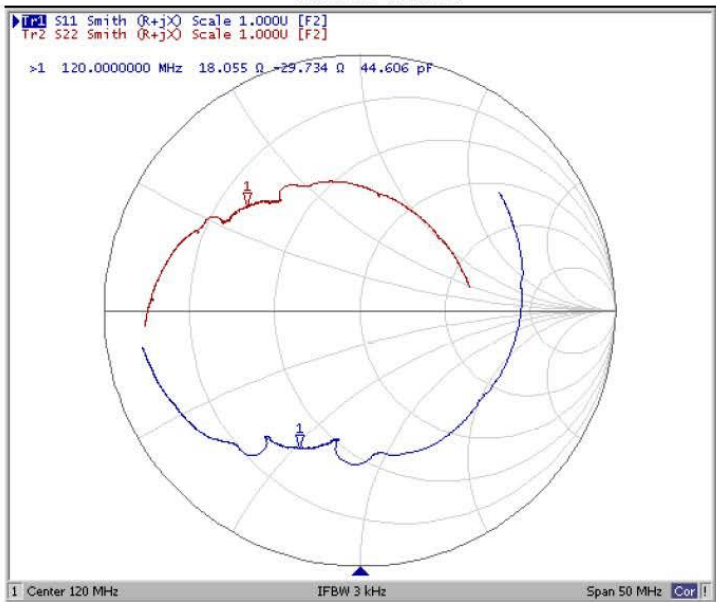
#### Ripple Variation



#### Group Delay Variation



#### Smith Chart



#### Attenuation

