



120 MHz IF Saw Filter 11 MHz Bandwidth

Part Number: AM120S595

ANATECH ELECTRONICS INC
RF & Microwave Filters & Products



Parameters Description	Unit	Minimum	Typical	Maximum
Center Frequency (Fo)	MHz	-	120.0	-
Insertion Loss at Fo	dB	-	25.4	27.0
Amplitude Ripple Variation at Fo ± 5.5 MHz	dBp-p	-	0.45	1.0
Group Delay Variation at Fo ± 5.5 MHz	nsec	-	30	70
Absolute Delay at Fo	usec	-	2.16	-
Bandwidth at -1.0 dB	MHz	11.00	11.47	-
Bandwidth at -3.0 dB	MHz	-	12.10	-
Bandwidth at -40.0 dB	MHz	-	14.57	-
Temperature Coefficient	ppm/°C	-	-18	-
Relative Attenuation:				
Fo ± 7.5 MHz	dB	45	50	-
Lower Sidelobe	dB	50	55	-
Upper Sidelobe	dB	50	55	-

Parameters Description	Unit	Minimum	Typical	Maximum
Operation Temperature Range	°C	-20	-	+70
Storage Temperature Range	°C	-40	-	+85
Maximum DC Voltage	V	-	-	10
Maximum Input Power	dBm	-	-	10
Source Impedance (Single Ended) ₁	Ω	-	50	-
Load Impedance (Single Ended) ₁	Ω	-	50	-
Package Size and Type	13.3 x 6.5 x 1.8 mm		V	



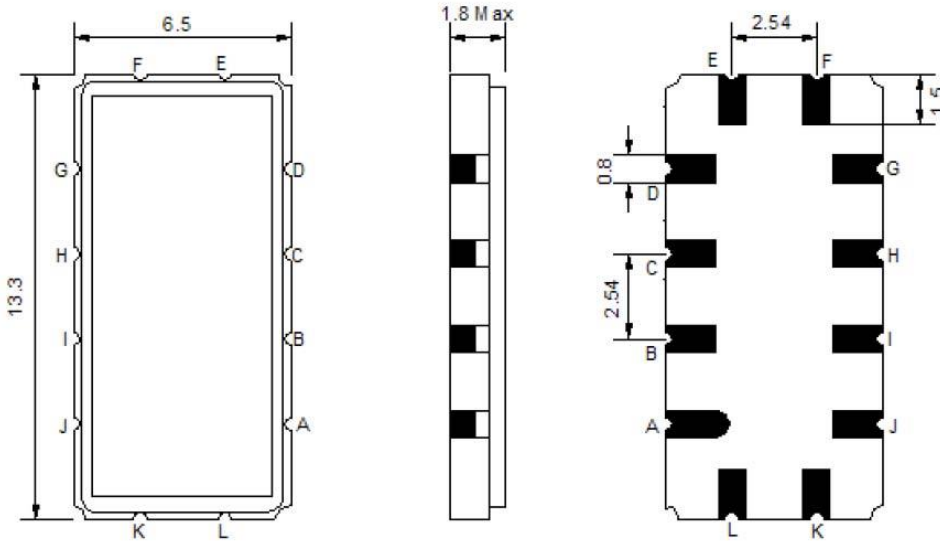
120 MHz IF Saw Filter 11 MHz Bandwidth

Part Number: AM120S595



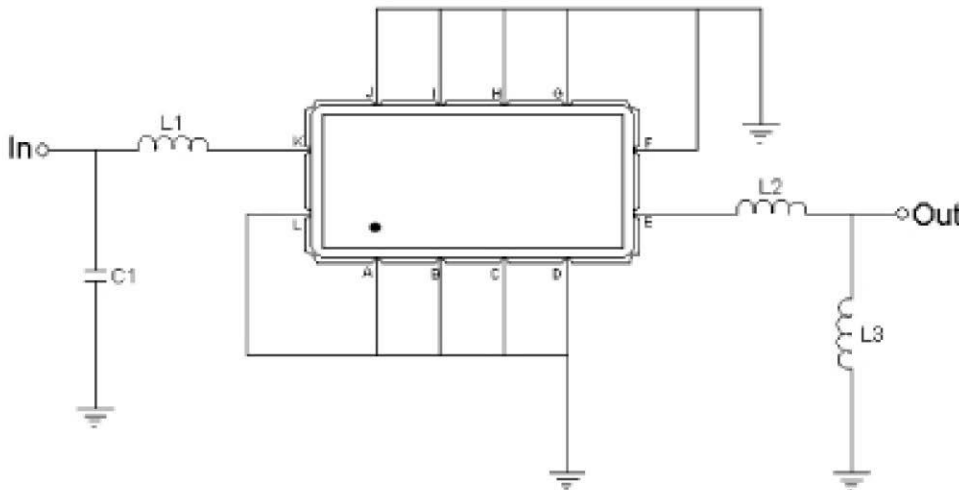
ANATECH ELECTRONICS INC
RF & Microwave Filters & Products

Outline Drawing:



Pin Description	
Ground	A B C D F G H I J L
Input	K
Output	E

Testing Environment:



Test Fixture & Values		
Input	L1=82nH ,	C1=14pF
Output	L2=33nH ,	L3=39nH
Source/Load Impedance	50 Ω	



120 MHz IF Saw Filter 11 MHz Bandwidth

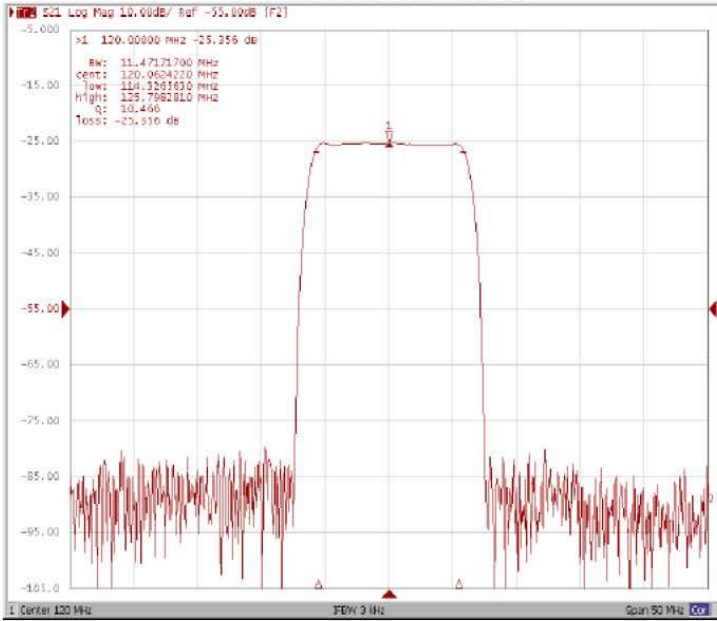
Part Number: AM120S595



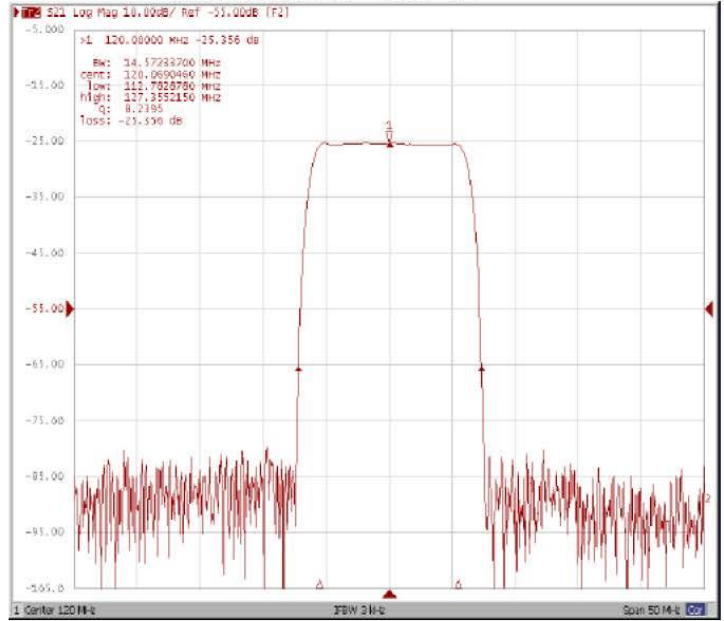
ANATECH ELECTRONICS INC
RF & Microwave Filters & Products

Frequency Response:

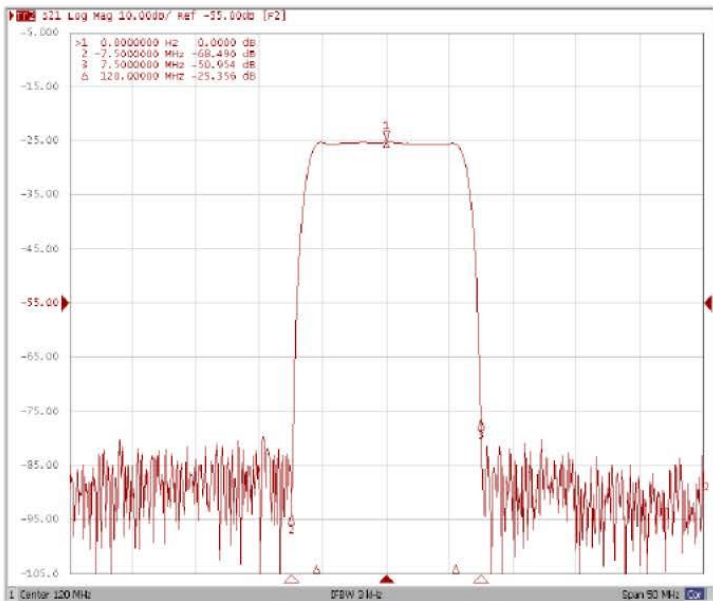
Bandwidth at -1.0 dB



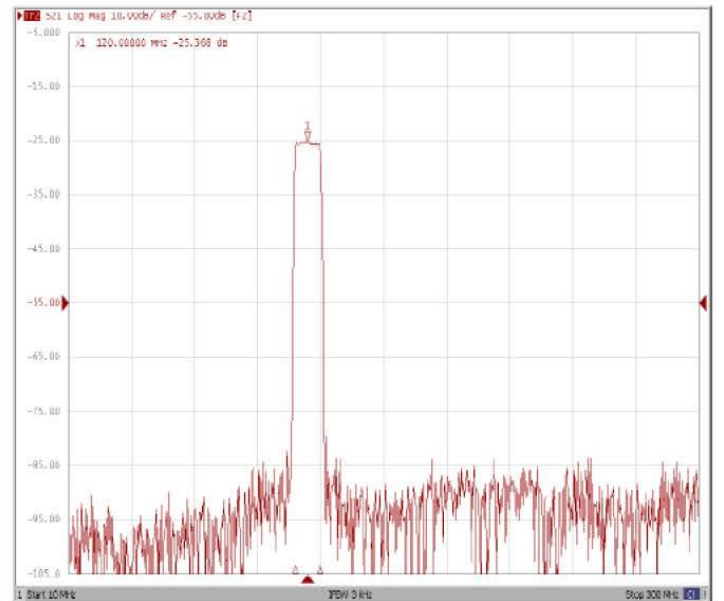
Bandwidth at -40.0 dB



Attenuation Fo±7.5MHz



Wide-Band





120 MHz IF Saw Filter 11 MHz Bandwidth

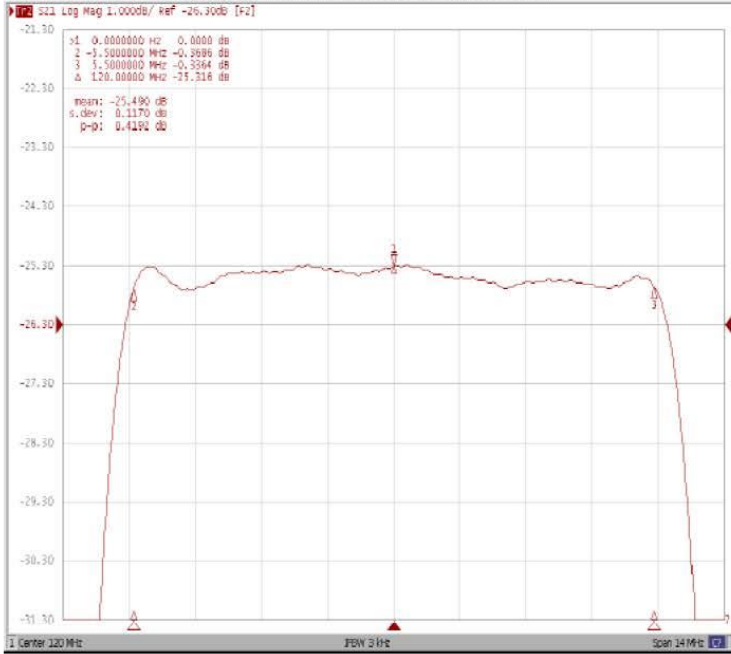
Part Number: AM120S595



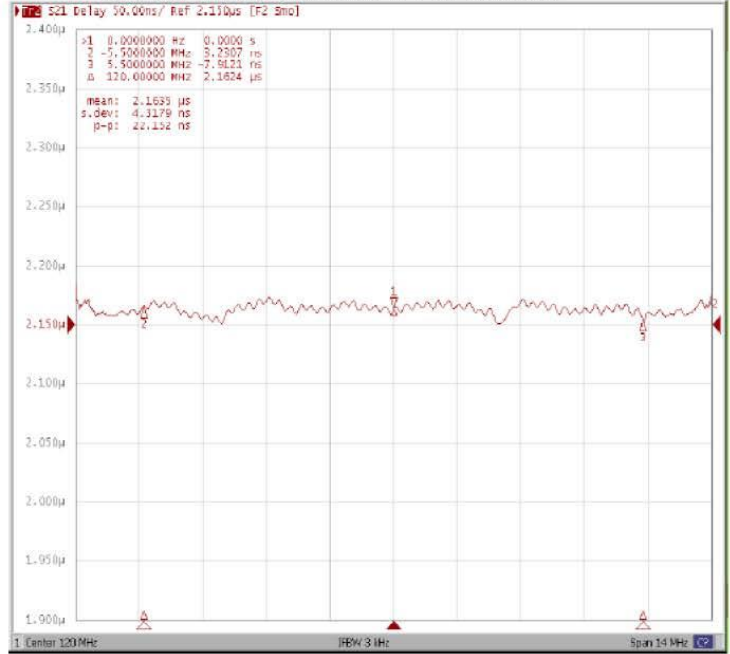
ANATECH ELECTRONICS INC
RF & Microwave Filters & Products

Frequency Response:

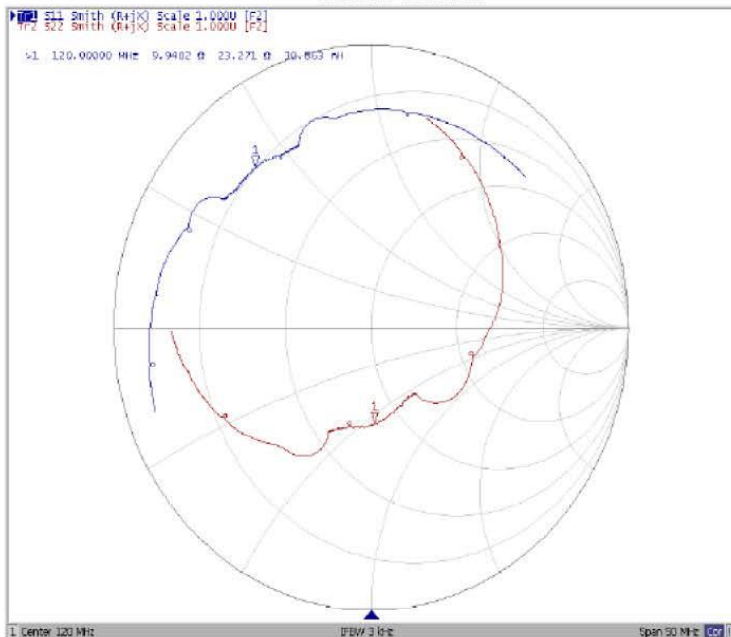
Ripple Variation Fo±5.5MHz



Group Delay Variation Fo±5.5MHz



Smith Chart



SWR

