



ANATECH ELECTRONICS INC
RF & Microwave Filters & Products

120 MHz IF Saw Filter 14 MHz Bandwidth

Part Number: AM120S596



Parameters Description	Unit	Minimum	Typical	Maximum
Center Frequency (Fo)	MHz	119.85	120.00	120.15
Insertion Loss at Fo	dB	-	23.3	25.5
Amplitude Ripple Variation at Fo ± 7.0 MHz	dBp-p	-	0.5	1.0
Group Delay Variation at Fo ± 7.0 MHz	nsec	-	45	100
Absolute Delay at Fo	usec	-	2.34	-
Bandwidth at -1.0 dB	MHz	-	14.73	-
Bandwidth at -3.0 dB	MHz	14.80	15.00	-
Bandwidth at -40.0 dB	MHz	-	16.30	16.60
Temperature Coefficient	ppm/°C	-	-72	-
Lower Sidelobe	dB	50	55	-
Upper Sidelobe	dB	50	55	-

Parameters Description	Unit	Minimum	Typical	Maximum
Operation Temperature Range	°C	-30	-	+80
Storage Temperature Range	°C	-40	-	+85
Maximum DC Voltage	V	-	-	10
Maximum Input Power	dBm	-	-	10
Source Impedance (Single Ended) ₁	Ω	-	50	-
Load Impedance (Single Ended) ₁	Ω	-	50	-
Package Size and Type	20.0 x 9.8 x 1.8 mm		D1	



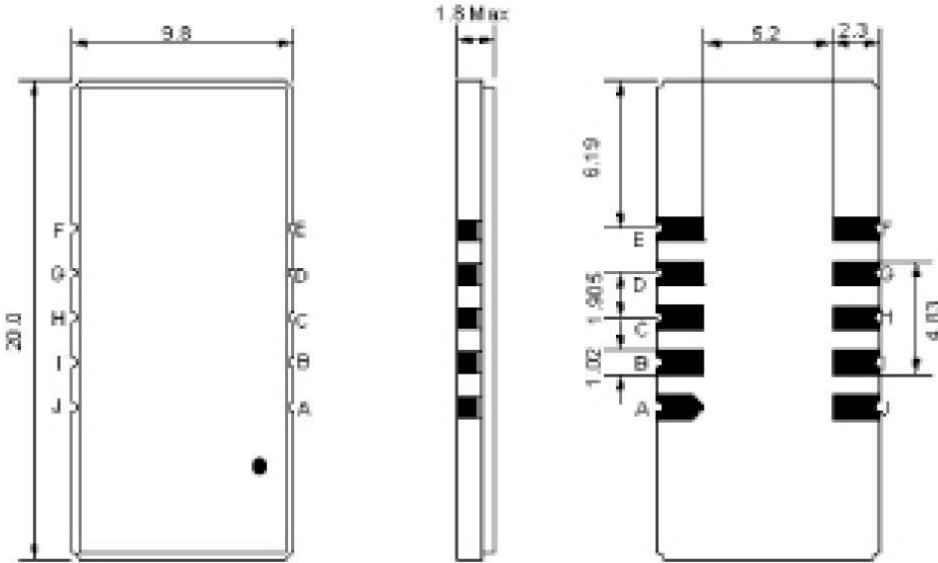
120 MHz IF Saw Filter 14 MHz Bandwidth

Part Number: AM120S596



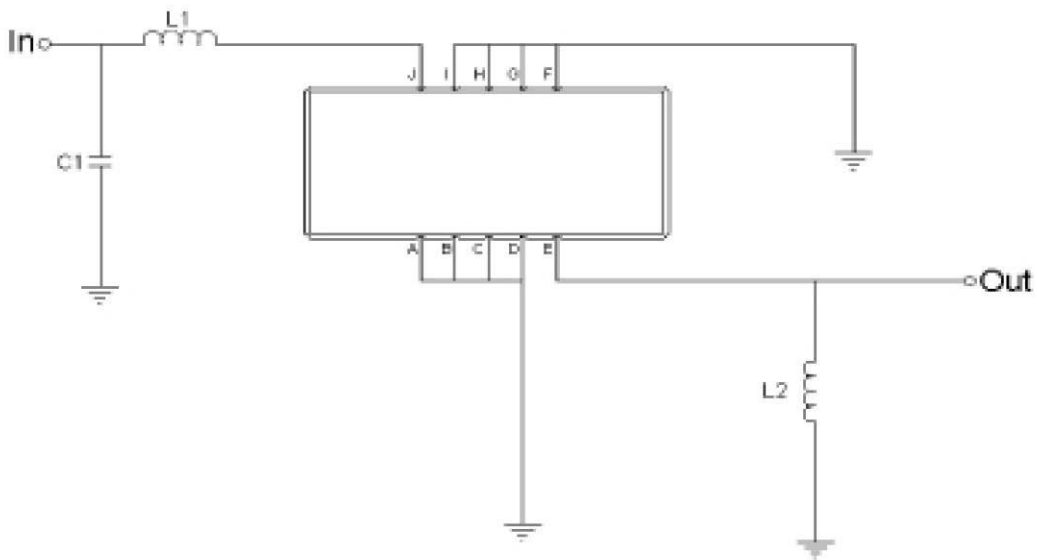
ANATECH ELECTRONICS INC
RF & Microwave Filters & Products

Outline Drawing:



Pin Description	
Ground	A B C D F G H I
Input	J
Output	E

Testing Environment:



Test Fixture & Values	
Input	L1=39nH, C1=24pF
Output	L2=150nH
Source/Load Impedance	50 Ω



120 MHz IF Saw Filter 14 MHz Bandwidth

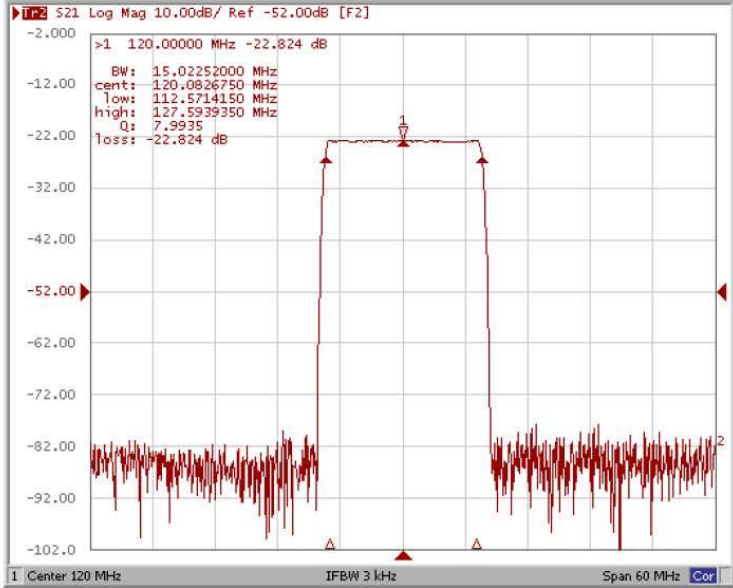
Part Number: AM120S596



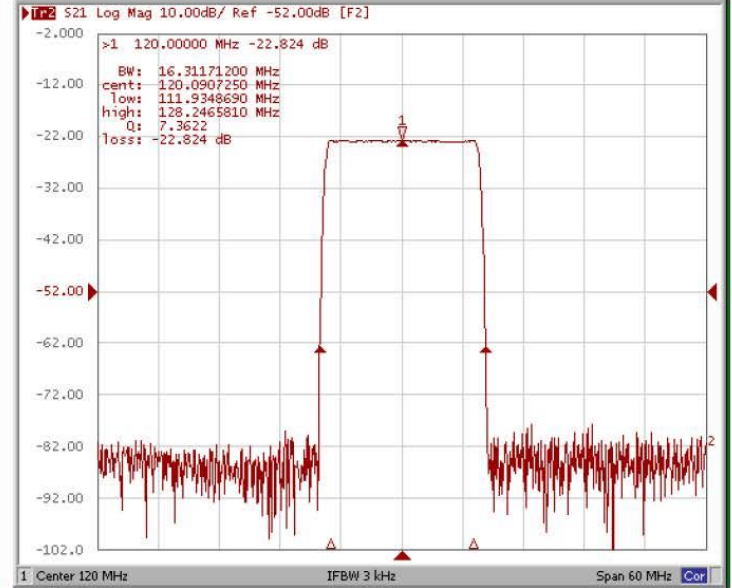
ANATECH ELECTRONICS INC
RF & Microwave Filters & Products

Frequency Response:

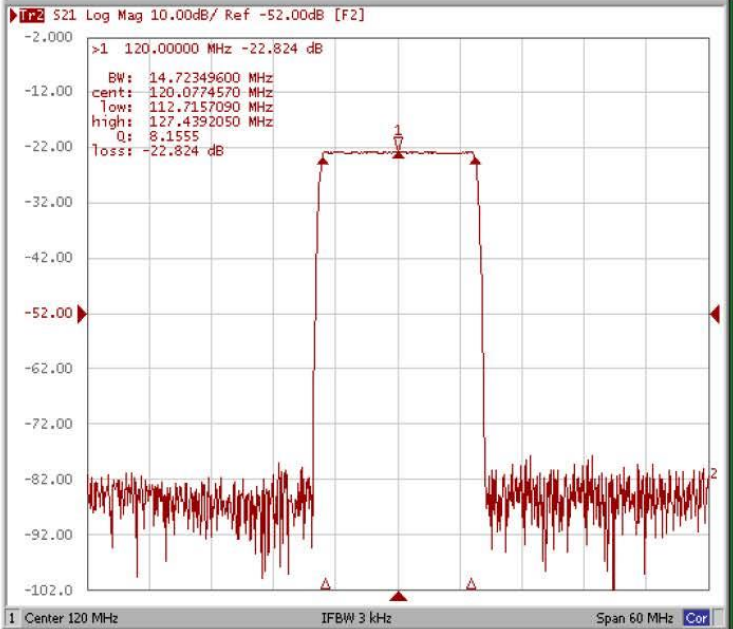
Bandwidth at -3.0 dB



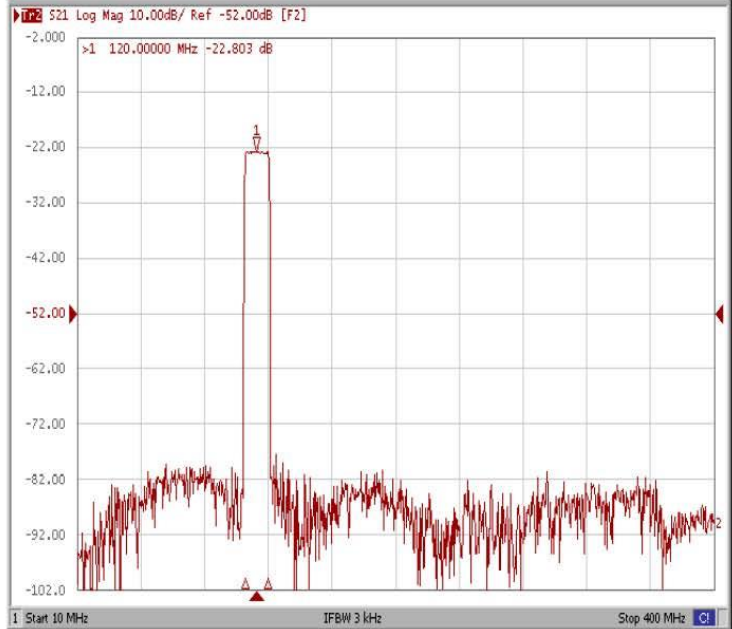
Bandwidth at -40.0 dB



Bandwidth at -1.0 dB



Wide Band





120 MHz IF Saw Filter 14 MHz Bandwidth

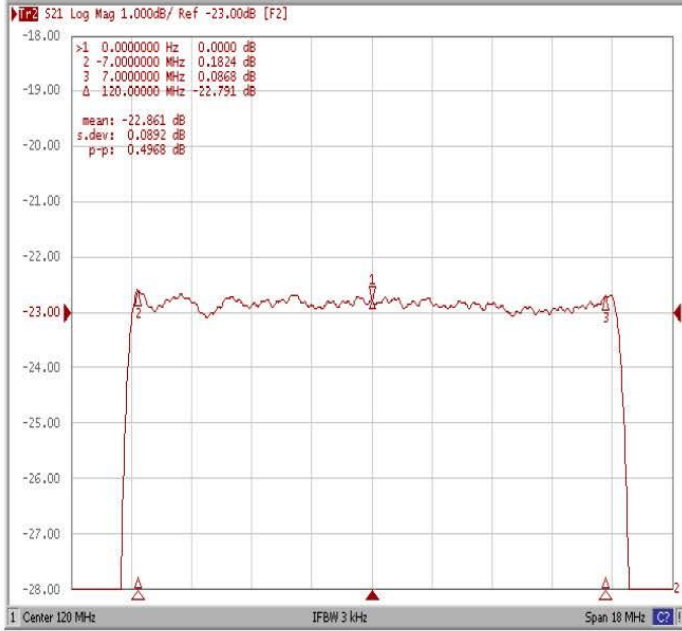
Part Number: AM120S596



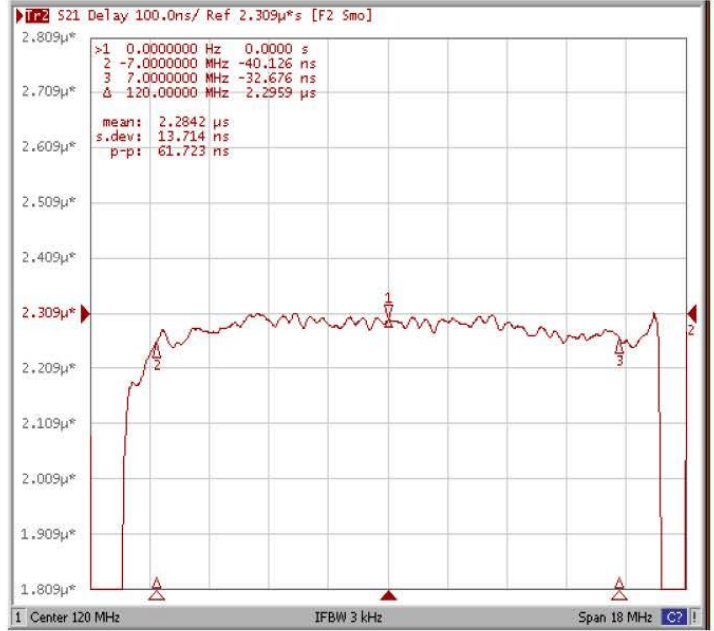
ANATECH ELECTRONICS INC
RF & Microwave Filters & Products

Frequency Response:

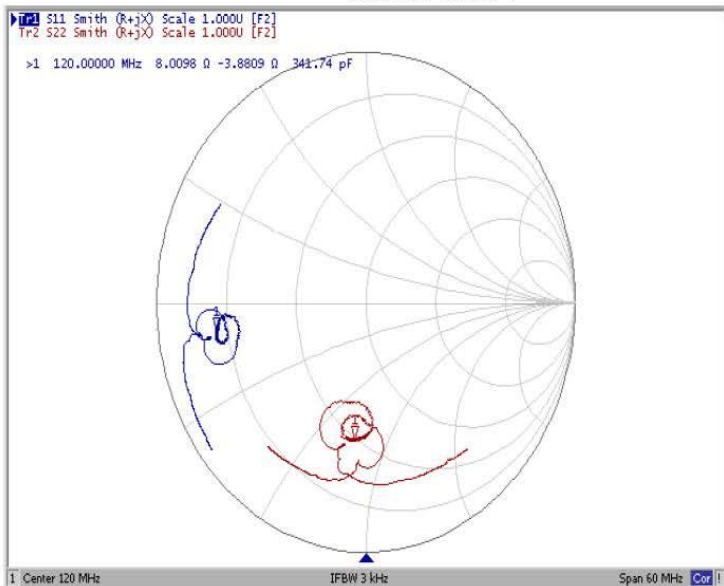
Ripple Variation



Group Delay Variation



Smith Chart



VSWR

