



ANATECH ELECTRONICS INC
RF & Microwave Filters & Products

120 MHz IF Saw Filter 14 MHz Bandwidth

Part Number: AM120S597



Parameters Description	Unit	Minimum	Typical	Maximum
Center Frequency (Fo)	MHz	119.85	120.0	120.15
Insertion Loss at Fo	dB	-	20.0	22.0
Passband Ripple Variation	dB	-	0.78	1.0
Group Delay Variation	nsec	-	50	100
Absolute Delay at Fo	usec	-	1.55	-
Bandwidth at -1.0 dB	MHz	-	14.35	-
Bandwidth at -3.0 dB	MHz	14.70	14.80	-
Bandwidth at -40.0 dB	MHz	-	16.75	16.90
Temperature Coefficient	ppm/°C	-	-72	-
Ultimate Rejection	dB	48	54	-

Parameters Description	Unit	Minimum	Typical	Maximum
Operation Temperature Range	°C	-	+25	-
Storage Temperature Range	°C	-40	-	+85
Maximum DC Voltage	V	-	-	10
Maximum Input Power	dBm	-	-	10
Source Impedance (Single Ended) ₁	Ω	-	50	-
Load Impedance (Single Ended) ₁	Ω	-	50	-
Package Size and Type	13.3 x 6.5 x 1.8 mm		V	



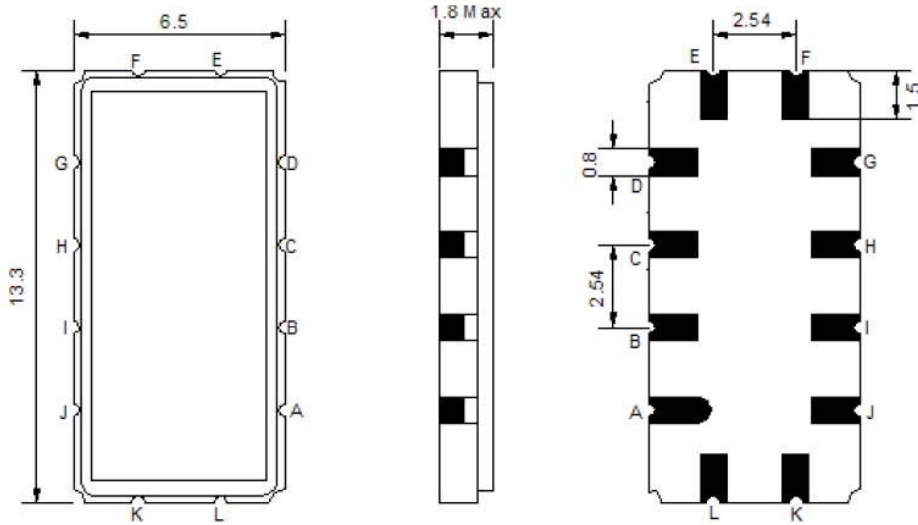
120 MHz IF Saw Filter 14 MHz Bandwidth

Part Number: AM120S597



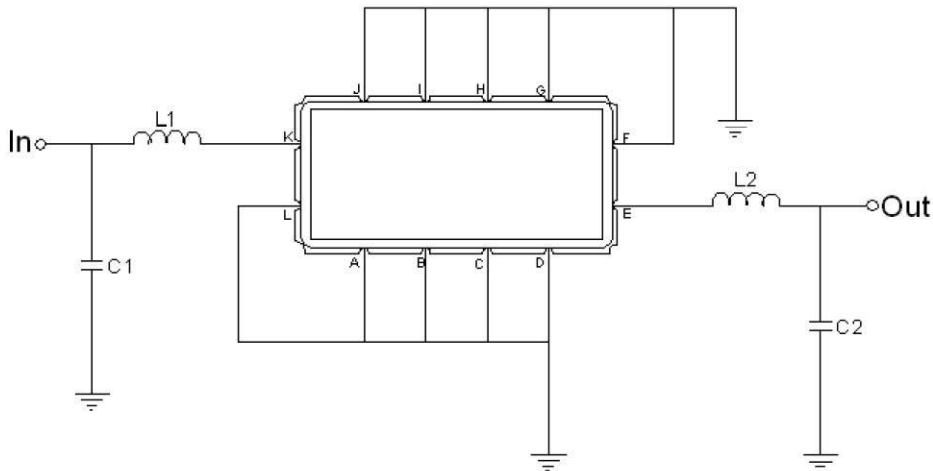
ANATECH ELECTRONICS INC
RF & Microwave Filters & Products

Outline Drawing:



Pin Description	
Ground	A B C D F G H I J L
Input	K
Output	E

Testing Environment:



Test Fixture & Values	
Input	L1 = 22 nH , C1 = 7 pF
Output	L2 = 22 nH , C2 = 7 pF
Source/Load Impedance	50 Ω



120 MHz IF Saw Filter 14 MHz Bandwidth

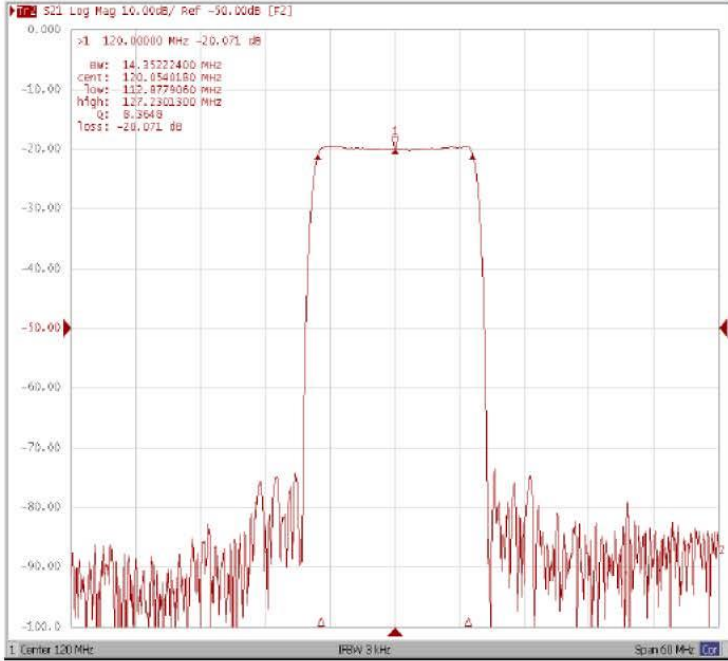
Part Number: AM120S597



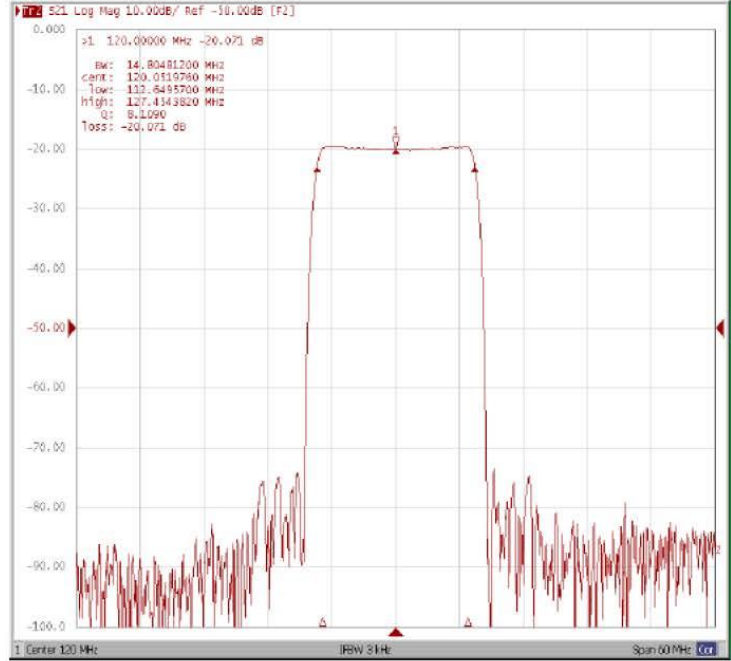
ANATECH ELECTRONICS INC
RF & Microwave Filters & Products

Frequency Response:

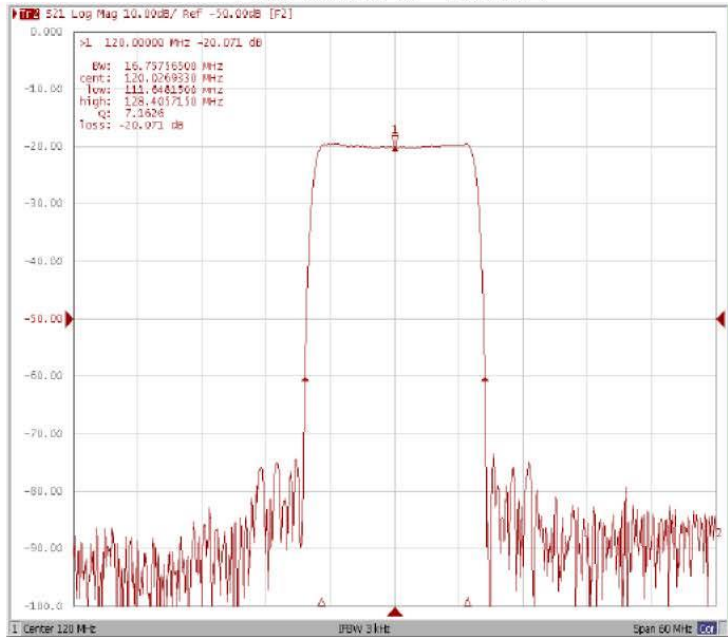
Bandwidth at -1.0 dB



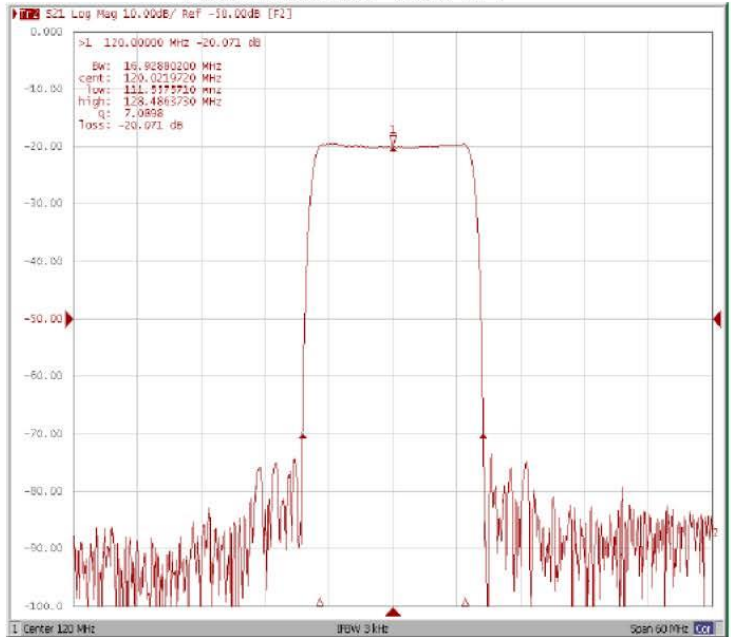
Bandwidth at -3.0 dB



Bandwidth at -40.0 dB



Bandwidth at -50.0 dB





120 MHz IF Saw Filter 14 MHz Bandwidth

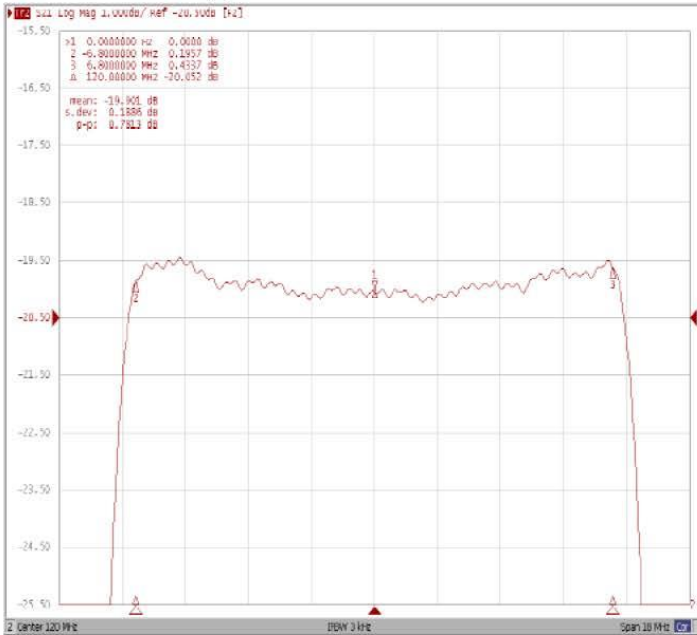
Part Number: AM120S597



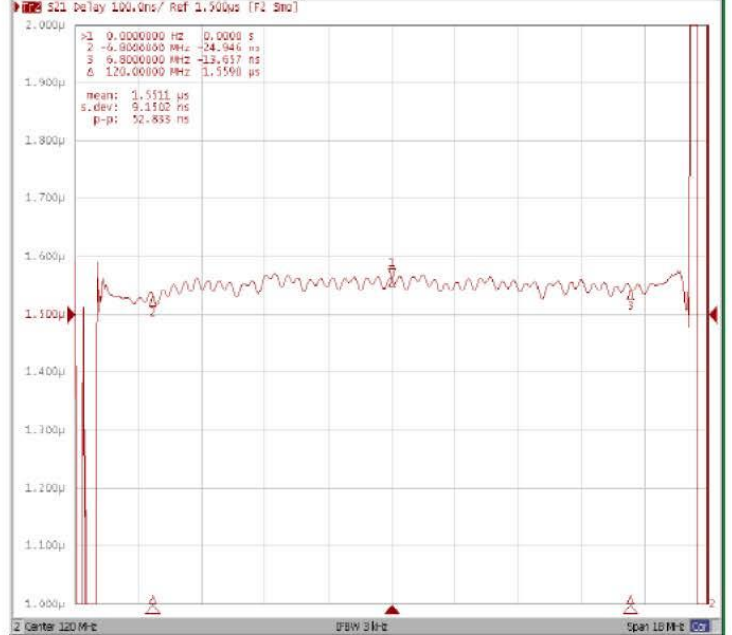
ANATECH ELECTRONICS INC
RF & Microwave Filters & Products

Frequency Response:

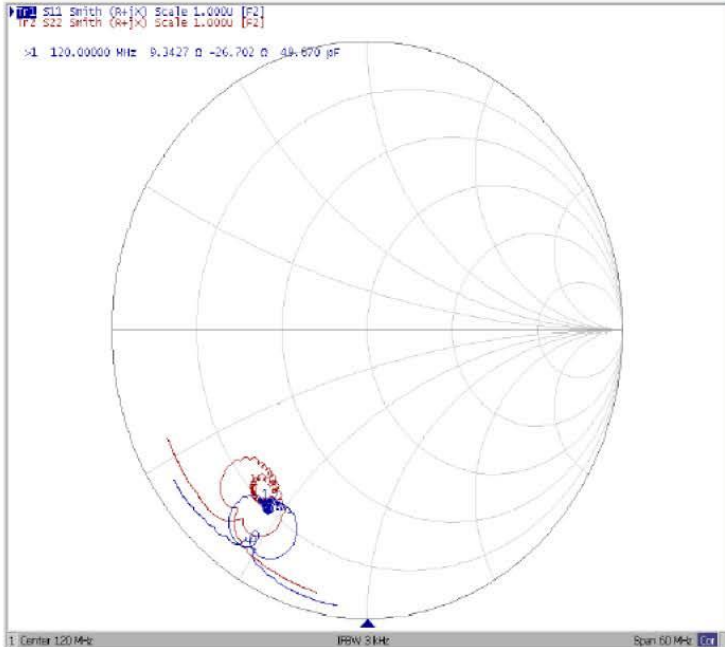
Ripple Variation Fo±6.8MHz



Group Delay Variation Fo±6.8MHz



Smith Chart



SWR

