



ANATECH ELECTRONICS INC
RF & Microwave Filters & Products

120 MHz IF Saw Filter 19 MHz Bandwidth

Part Number: AM120S599



Parameters Description	Unit	Minimum	Typical	Maximum
Center Frequency (Fo)	MHz	-	120.00	-
Insertion Loss at Fo	dB	-	20.20	22.00
Passband Ripple at Fo ± 9.22 MHz	dB	-	0.62	1.00
Group Delay Variation at Fo ± 9.22 MHz	nsec	-	35	80
Absolute Delay at Fo	usec	-	1.52	-
Bandwidth at -1.0 dB	MHz	-	19.44	-
Bandwidth at -3.0 dB	MHz	19.60	19.90	-
Bandwidth at -40.0 dB	MHz	-	21.70	22.00
Relative Attenuation at Fo ± 10.8 MHz	dB	48	53	-
Ultimate Rejection	dB	20	33	-

Parameters Description	Unit	Minimum	Typical	Maximum
Operation Temperature Range	°C	-40	-	+85
Storage Temperature Range	°C	-45	-	+85
Maximum DC Voltage	V	-	-	10
Maximum Input Power	dBm	-	-	10
Source Impedance (Single Ended) ₁	Ω	-	50	-
Load Impedance (Single Ended) ₁	Ω	-	50	-
Package Size and Type		13.3 x 6.5 x 1.8 mm		V



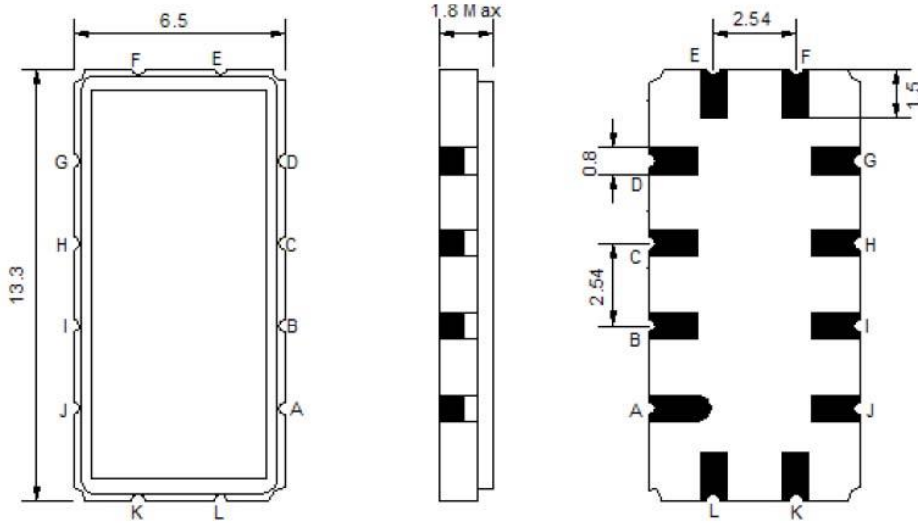
120 MHz IF Saw Filter 19 MHz Bandwidth

Part Number: AM120S599



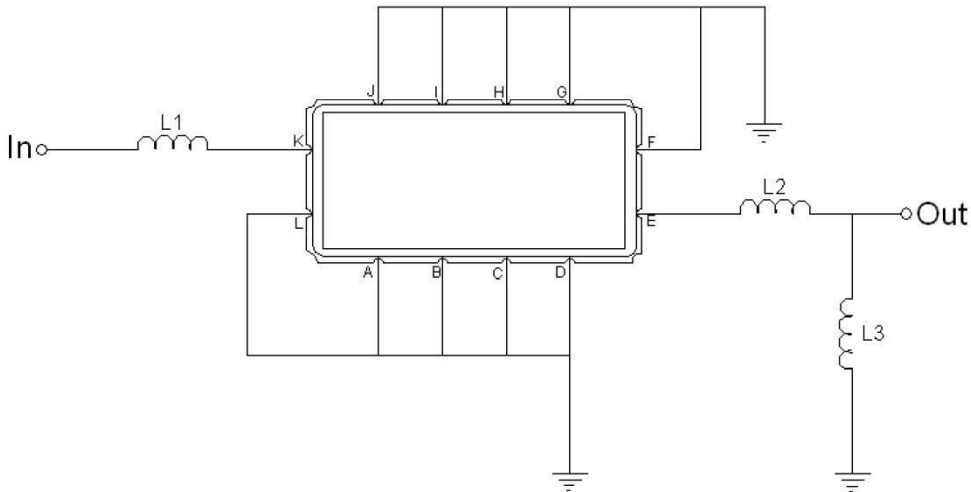
ANATECH ELECTRONICS INC
RF & Microwave Filters & Products

Outline Drawing:



Pin Description	
Ground	A B C D F G H I J L
Input	K
Output	E

Testing Environment:



Test Fixture & Values	
Input	L1=68 nH
Output	L2=2.7nH, L3=68nH
Source/Load Impedance	50 Ω



120 MHz IF Saw Filter 19 MHz Bandwidth

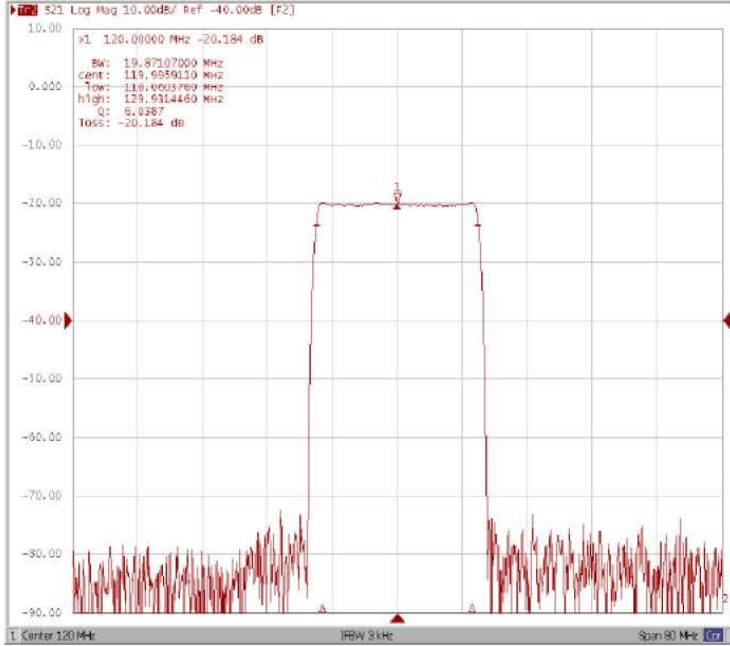
Part Number: AM120S599



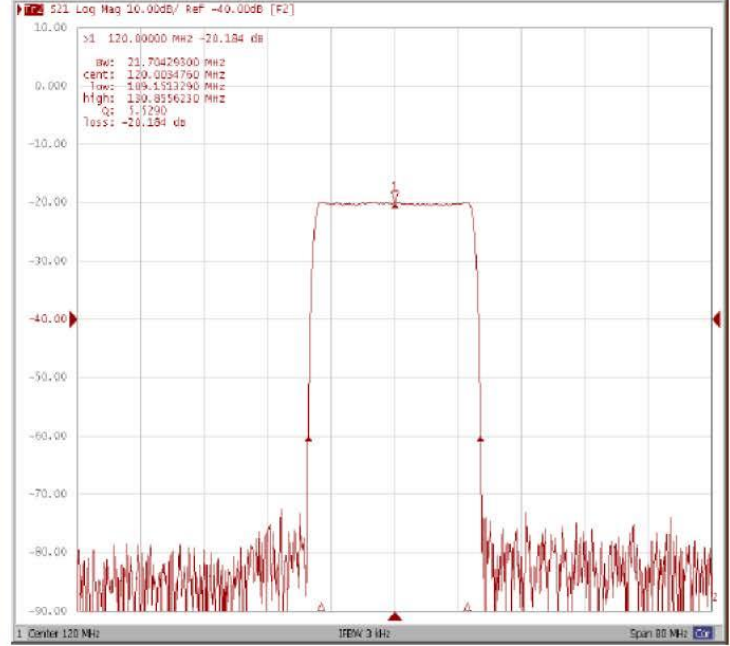
ANATECH ELECTRONICS INC
RF & Microwave Filters & Products

Frequency Response:

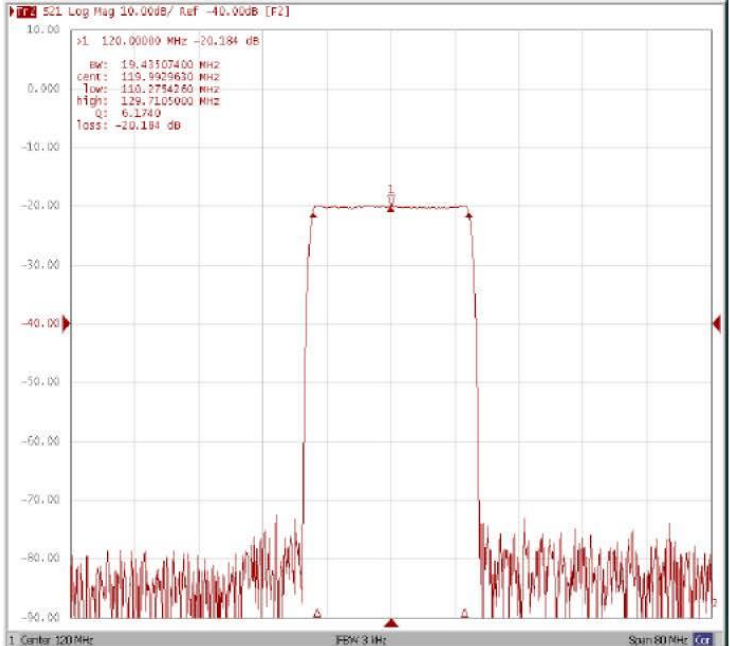
Bandwidth at -3.0 dB



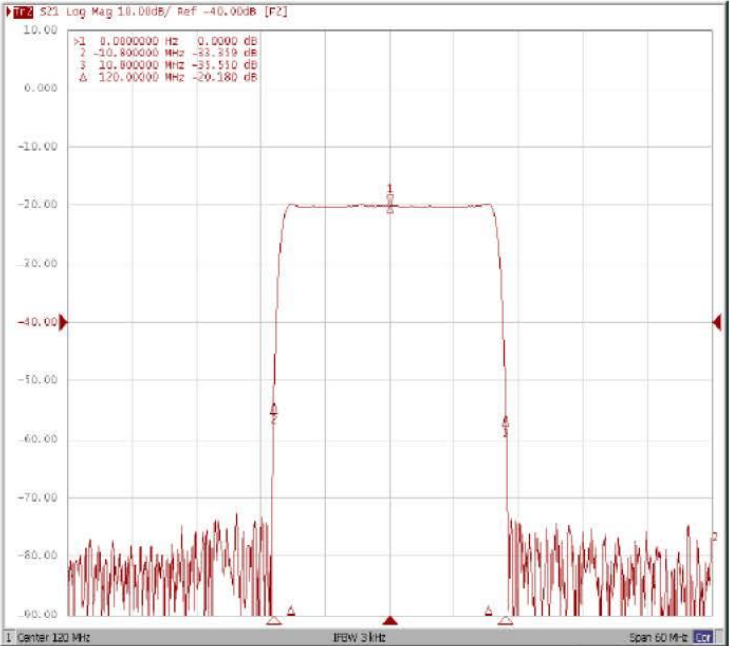
Bandwidth at -40.0 dB



Bandwidth at -1.0 dB



Relative Attenuation Fo±10.8MHz





120 MHz IF Saw Filter 19 MHz Bandwidth

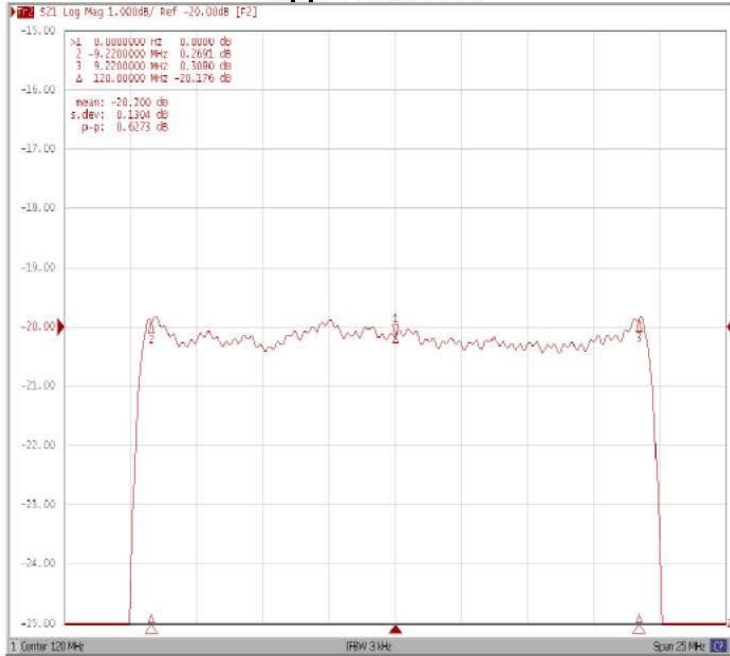
Part Number: AM120S599



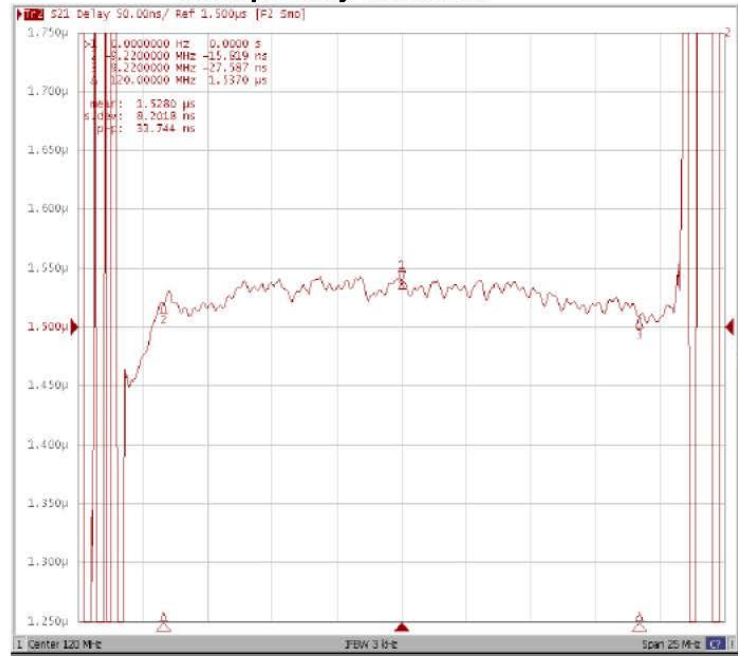
ANATECH ELECTRONICS INC
RF & Microwave Filters & Products

Frequency Response:

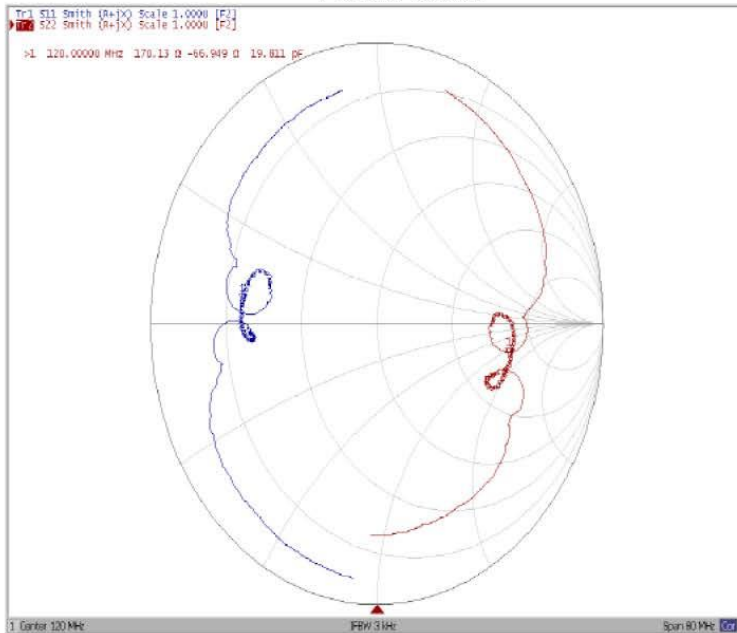
Ripple Variation



Group Delay Variation



Smith Chart



VSWR

