



120 MHz IF Saw Filter 19 MHz Bandwidth

Part Number: AM120S600

ANATECH ELECTRONICS INC
RF & Microwave Filters & Products



Parameters Description	Unit	Minimum	Typical	Maximum
Center Frequency (Fo)	MHz	120.05	120.1	120.20
Insertion Loss at Fo	dB	-	20.5	23.0
Amplitude Ripple at Fo ± 9.65 MHz	dB _{p-p}	-	0.65	1.0
Group Delay Variation at Fo ± 9.65 MHz	nsec	-	50	80
Absolute Delay at Fo	usec	-	1.59	-
Bandwidth at -1.0 dB	MHz	19.50	19.77	-
Bandwidth at -3.0 dB	MHz	-	20.18	-
Bandwidth at -40.0 dB	MHz	-	21.90	22.0
Temperature Coefficient	ppm/°C	-	-72	-
Relative Attenuation:				
Fo ± 14.42 MHz	dB	-	55	-
Lower Sidelobe	dB	-	52	-
Upper Sidelobe	dB	-	52	-

Parameters Description	Unit	Minimum	Typical	Maximum
Operation Temperature Range	°C	-	+25	-
Storage Temperature Range	°C	-40	-	+85
Maximum DC Voltage	V	-	-	10
Maximum Input Power	dBm	-	-	10
Source Impedance (Single Ended) ₁	Ω	-	50	-
Load Impedance (Single Ended) ₁	Ω	-	50	-
Package Size and Type	13.3 x 6.5 x 1.8 mm		V	



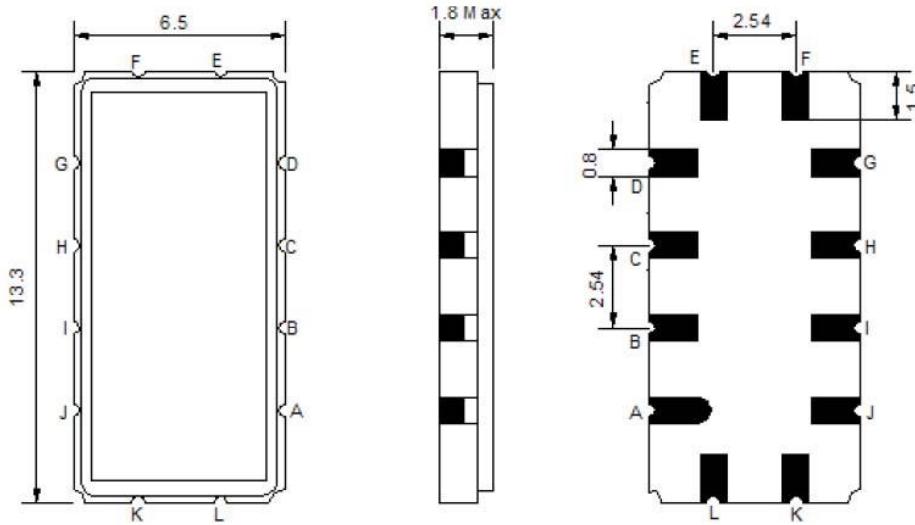
120 MHz IF Saw Filter 19 MHz Bandwidth

Part Number: AM120S600



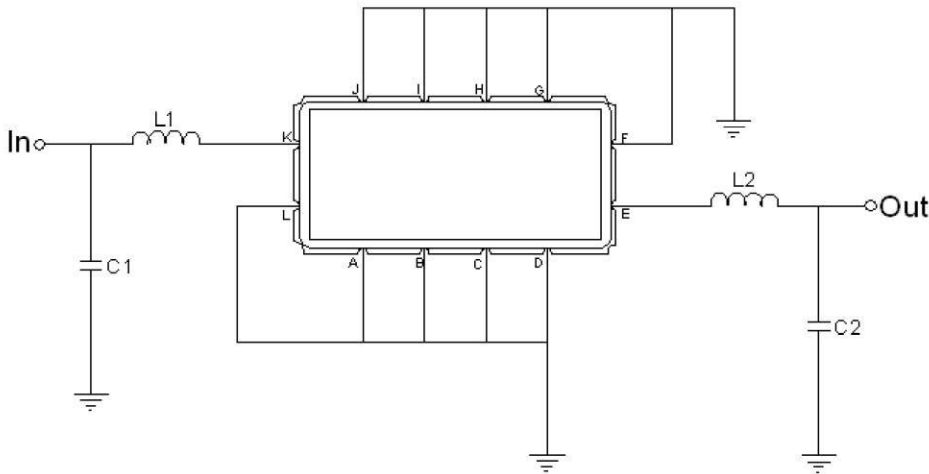
ANATECH ELECTRONICS INC
RF & Microwave Filters & Products

Outline Drawing:



Pin Description	
Ground	A B C D F G H I J L
Input	K
Output	E

Testing Environment:



Test Fixture & Values		
Input	L1=100nH ,	C1=10pF
Output	L2=47nH ,	C2=16pF
Source/Load Impedance	50 Ω	



120 MHz IF Saw Filter 19 MHz Bandwidth

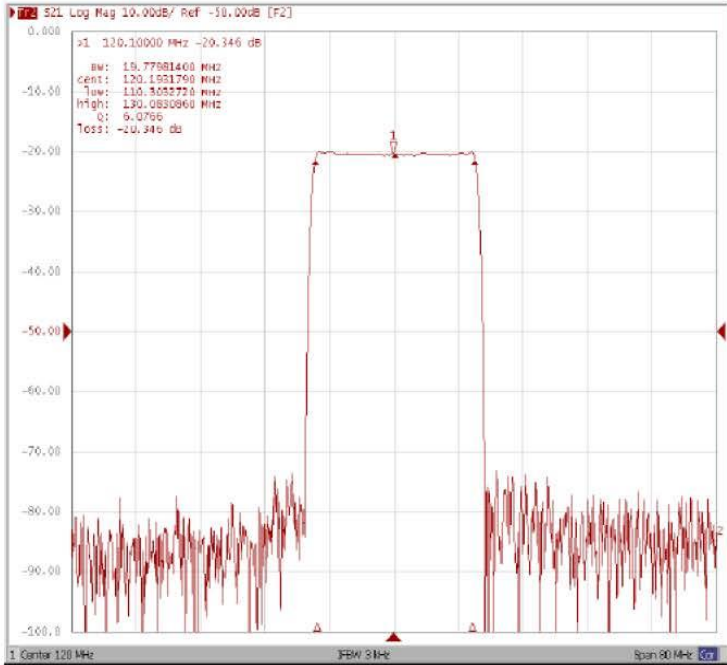
Part Number: AM120S600



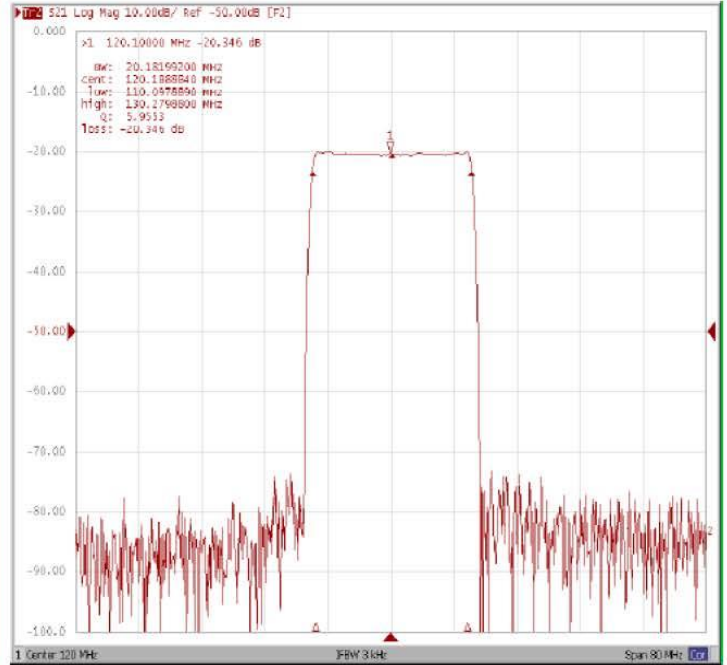
ANATECH ELECTRONICS INC
RF & Microwave Filters & Products

Frequency Response:

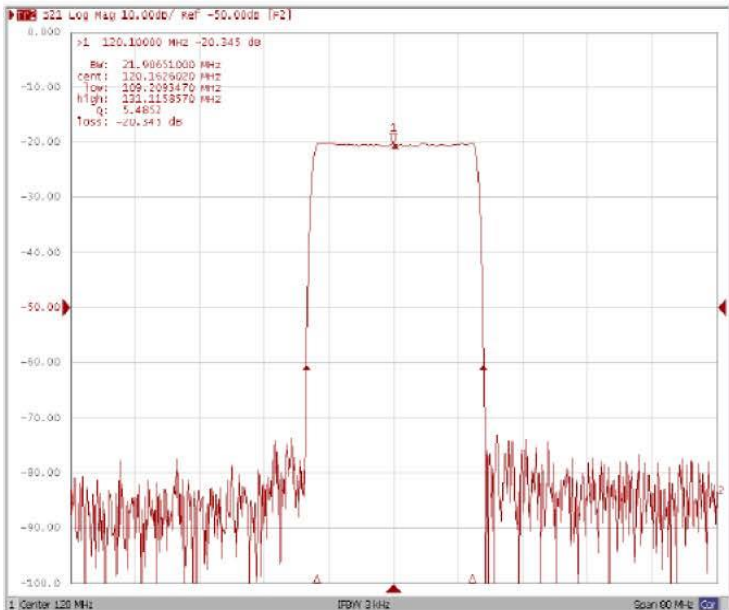
Bandwidth at -1.0 dB



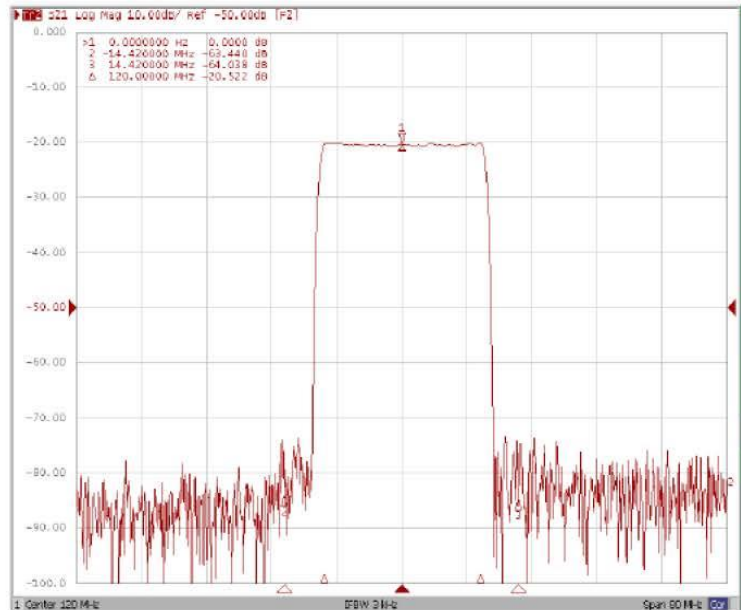
Bandwidth at -3.0 dB



Bandwidth at -40.0 dB



Attenuation Fo±14.42MHz





120 MHz IF Saw Filter 19 MHz Bandwidth

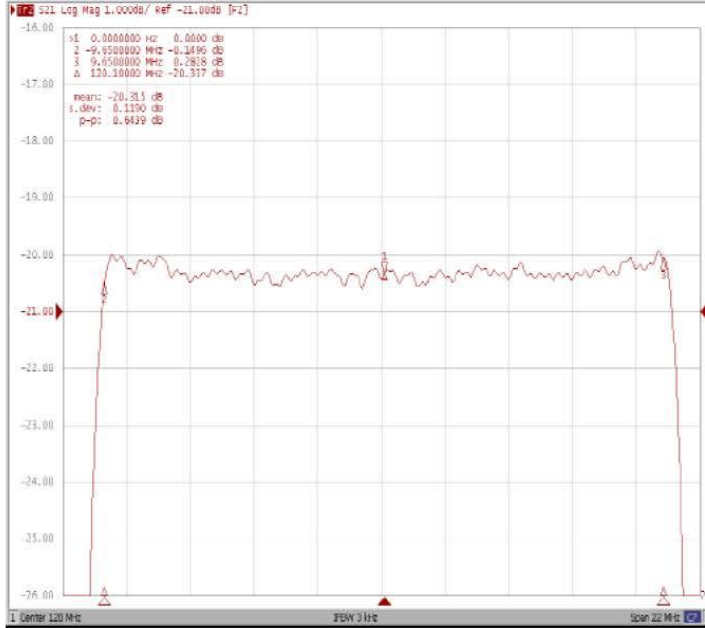
Part Number: AM120S600



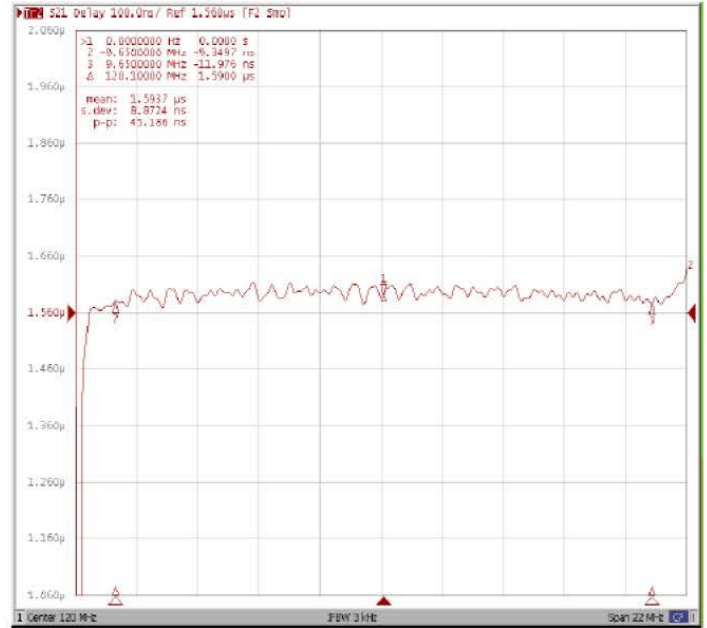
ANATECH ELECTRONICS INC
RF & Microwave Filters & Products

Frequency Response:

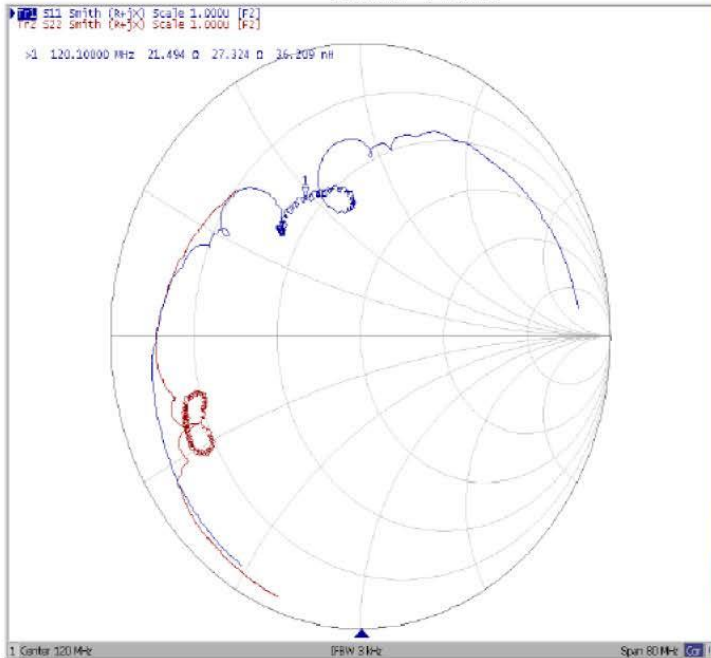
Ripple Variation Fo±9.65MHz



Group Delay Variation Fo±9.65MHz



Smith Chart



SWR

