



# 120 MHz IF Saw Filter 20 MHz Bandwidth

## Part Number: AM120S601

**ANATECH ELECTRONICS INC**  
RF & Microwave Filters & Products



Parameters Description	Unit	Minimum	Typical	Maximum
Center Frequency (Fo)	MHz	119.9	120.0	120.1
Insertion Loss at Fo	dB	-	21.5	25.5
Amplitude Ripple at Fo ± 9.75 MHz	dB <sub>p-p</sub>	-	0.7	1.0
Group Delay Variation at Fo ± 9.75 MHz	nsec	-	40	100
Absolute Delay at Fo	usec	-	2.3	-
Bandwidth at -1.0 dB	MHz	-	20.2	-
Bandwidth at -3.0 dB	MHz	20.4	20.5	-
Bandwidth at -40.0 dB	MHz	-	21.8	22.0
Temperature Coefficient	ppm/°C	-	-72	-
Lower Sidelobe	dB	50	-	-
Upper Sidelobe	dB	50	-	-

Parameters Description	Unit	Minimum	Typical	Maximum
Operation Temperature Range	°C	-30	-	+80
Storage Temperature Range	°C	-40	-	+85
Maximum DC Voltage	V	-	-	10
Maximum Input Power	dBm	-	-	10
Source Impedance (Single Ended) <sub>1</sub>	Ω	-	50	-
Load Impedance (Single Ended) <sub>1</sub>	Ω	-	50	-
Package Size and Type	20.0 x 9.8 x 1.8 mm		D1	



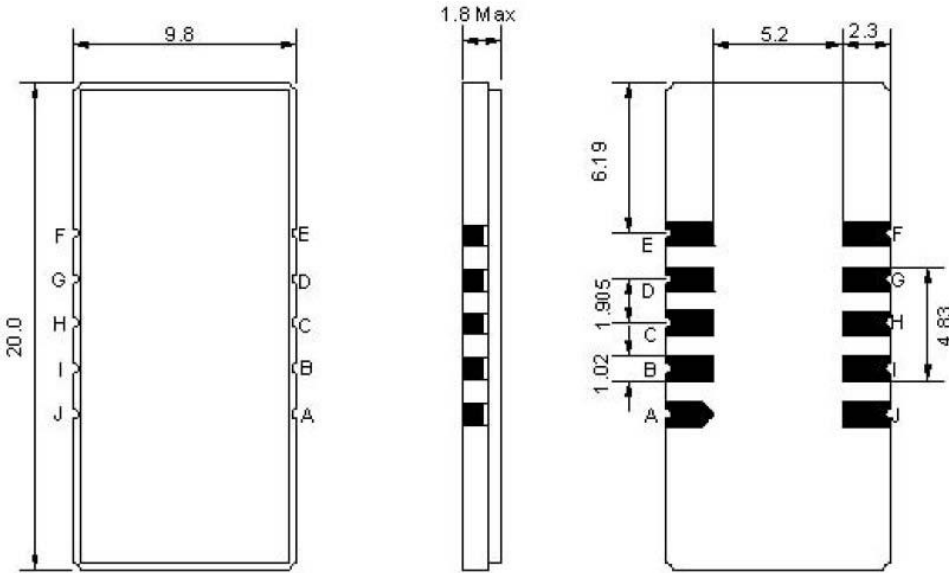
# 120 MHz IF Saw Filter 20 MHz Bandwidth

## Part Number: AM120S601



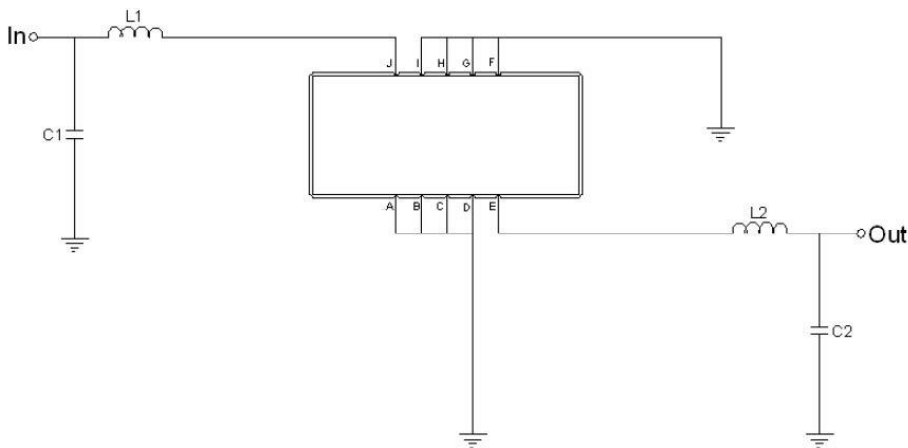
**ANATECH ELECTRONICS INC**  
RF & Microwave Filters & Products

### Outline Drawing:



Pin Description	
Ground	A B C D F G H I
Input	J
Output	E

### Testing Environment:



Test Fixture & Values	
Input	L1= 56 nH, C1= 33 pF
Output	L2= 68 nH, C2= 20 pF
Source/Load Impedance	50 Ω



### Frequency Response:

