



120 MHz IF Saw Filter 20 MHz Bandwidth

Part Number: AM120S602

ANATECH ELECTRONICS INC
RF & Microwave Filters & Products



Parameters Description	Unit	Minimum	Typical	Maximum
Center Frequency (Fo)	MHz	120.00	120.10	120.20
Insertion Loss at Fo	dB	-	24.0	25.5
Amplitude Ripple at Fo ± 9.75 MHz	dBp-p	-	0.55	1.0
Group Delay Variation at Fo ± 9.75 MHz	nsec	-	50	100
Absolute Delay at Fo	usec	-	2.2	-
Bandwidth at -1.0 dB	MHz	-	20.25	-
Bandwidth at -3.0 dB	MHz	20.40	20.55	-
Bandwidth at -40.0 dB	MHz	-	21.85	21.98
Temperature Coefficient	ppm/°C	-	-72	-
Lower Sidelobe	dB	50	55	-
Upper Sidelobe	dB	50	55	-

Parameters Description	Unit	Minimum	Typical	Maximum
Operation Temperature Range	°C	-30	-	+80
Storage Temperature Range	°C	-40	-	+85
Maximum DC Voltage	V	-	-	10
Maximum Input Power	dBm	-	-	10
Source Impedance (Single Ended) ₁	Ω	-	50	-
Load Impedance (Single Ended) ₁	Ω	-	50	-
Package Size and Type	20.0 x 9.8 x 1.8 mm		D1	



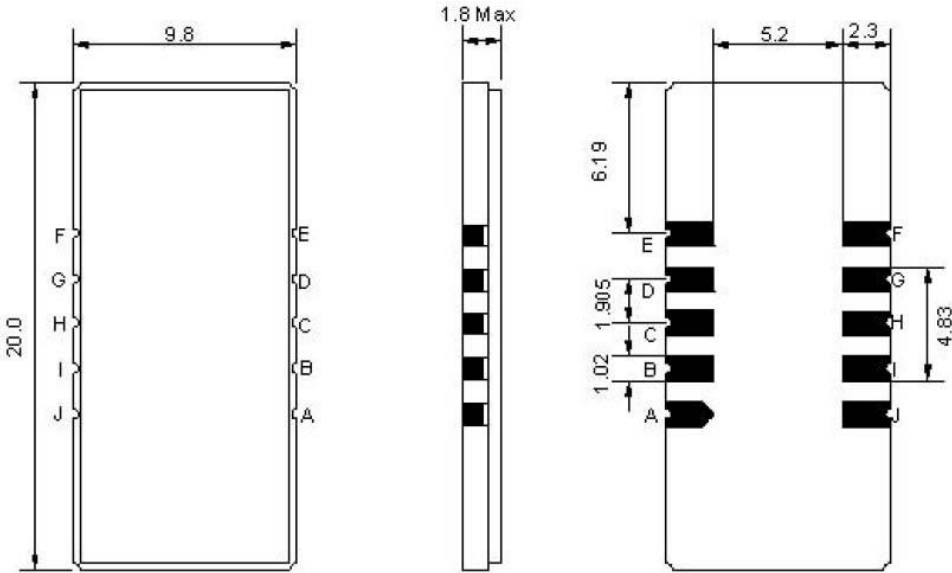
120 MHz IF Saw Filter 20 MHz Bandwidth

Part Number: AM120S602



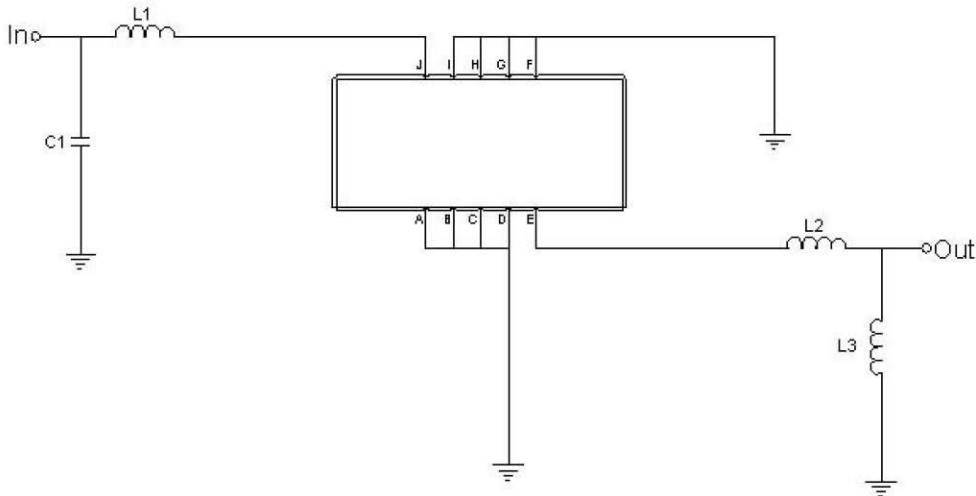
ANATECH ELECTRONICS INC
RF & Microwave Filters & Products

Outline Drawing:



Pin Description	
Ground	A B C D F G H I
Input	J
Output	E

Testing Environment:



Test Fixture & Values	
Input	C1= 5 pF, L1= 56 nH
Output	L2= 5.6 nH, L3= 68 nH
Source/Load Impedance	50 Ω



Frequency Response:

