



120 MHz IF Saw Filter 9 MHz Bandwidth

Part Number: AM120S603

ANATECH ELECTRONICS INC
RF & Microwave Filters & Products



Parameters Description	Unit	Minimum	Typical	Maximum
Center Frequency (Fo)	MHz	-	120.0	-
Insertion Loss at Fo	dB	-	24.4	26.0
Amplitude Ripple at Fo ± 4.4 MHz	dBp-p	-	0.6	1.0
Group Delay Variation at Fo ± 4.4 MHz	nsec	-	30	80
Absolute Delay at Fo	usec	-	3.17	-
Bandwidth at -1.0 dB	MHz	9.0	9.24	-
Bandwidth at -3.0 dB	MHz	-	9.054	-
Bandwidth at -10.0 dB	MHz	-	10.01	10.1
Bandwidth at -25.0 dB	MHz	-	10.5	11.7
Bandwidth at -40.0 dB	MHz	-	10.75	-
Temperature Coefficient	ppm/°C	-	-23	-
Lower Sidelobe	dB	50	56	-
Upper Sidelobe	dB	50	56	-

Parameters Description	Unit	Minimum	Typical	Maximum
Operation Temperature Range	°C	-10	-	+50
Storage Temperature Range	°C	-40	-	+85
Maximum DC Voltage	V	-	-	10
Maximum Input Power	dBm	-	-	10
Source Impedance (Single Ended) ₁	Ω	-	50	-
Load Impedance (Single Ended) ₁	Ω	-	50	-
Package Size and Type	20.0 x 9.8 x 1.8 mm		D1	



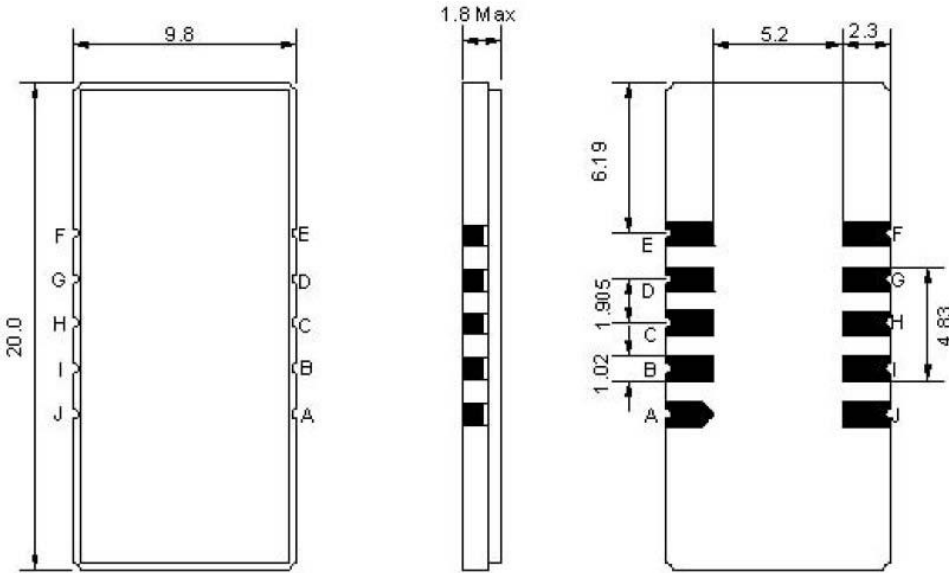
120 MHz IF Saw Filter 9 MHz Bandwidth

Part Number: AM120S603



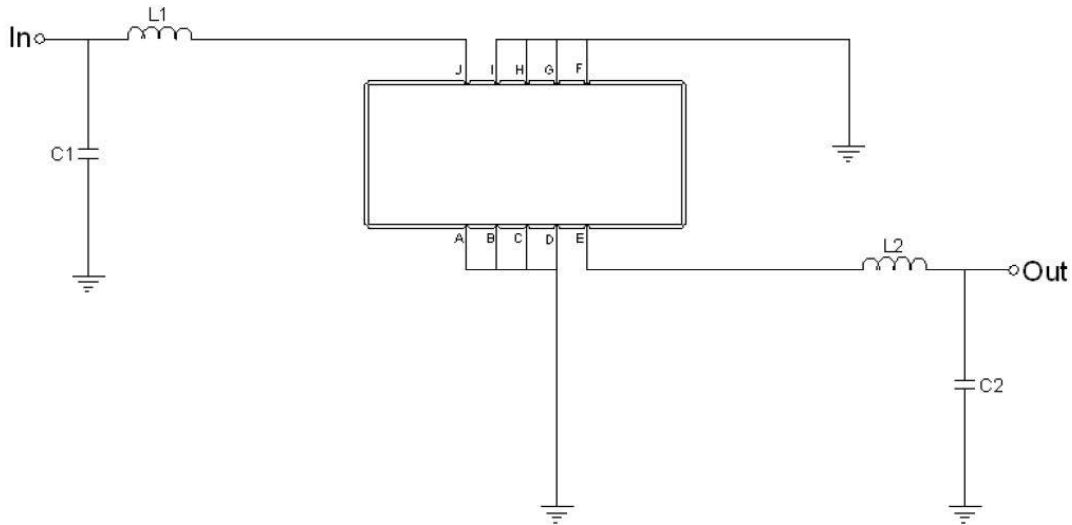
ANATECH ELECTRONICS INC
RF & Microwave Filters & Products

Outline Drawing:



Pin Description	
Ground	A B C D F G H I
Input	J
Output	E

Testing Environment:



Test Fixture & Values	
Input	L1= 56 nH, C1= 43 pF
Output	L2= 56 nH, C2= 43 pF
Source/Load Impedance	50 Ω



120 MHz IF Saw Filter 9 MHz Bandwidth

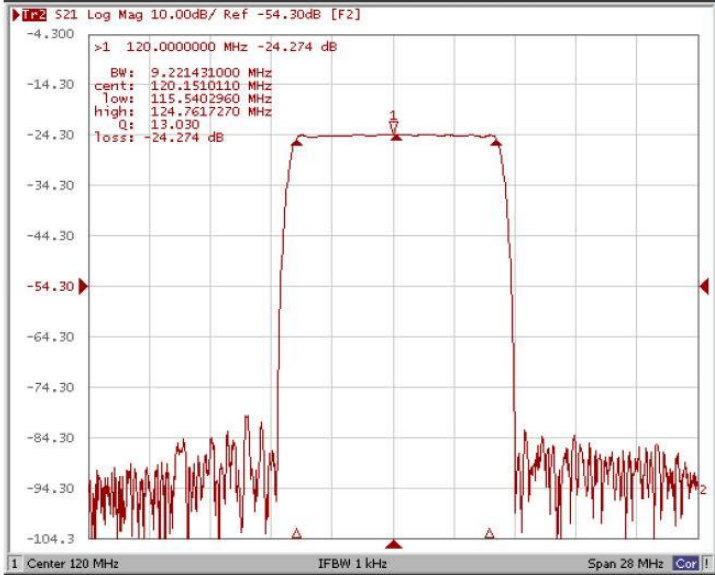
Part Number: AM120S603



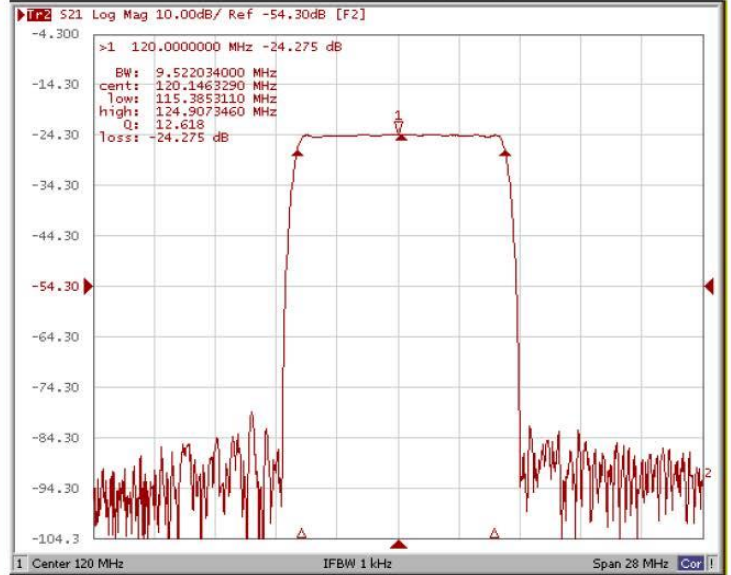
ANATECH ELECTRONICS INC
RF & Microwave Filters & Products

Frequency Response:

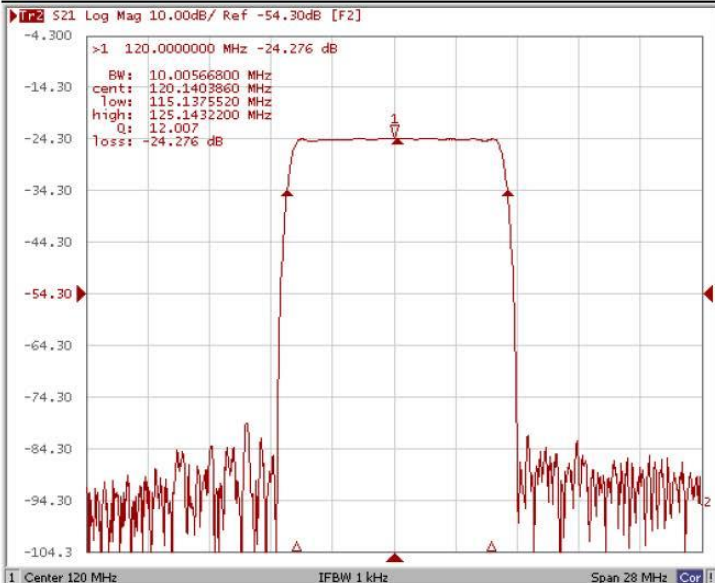
Bandwidth at -1.0 dB



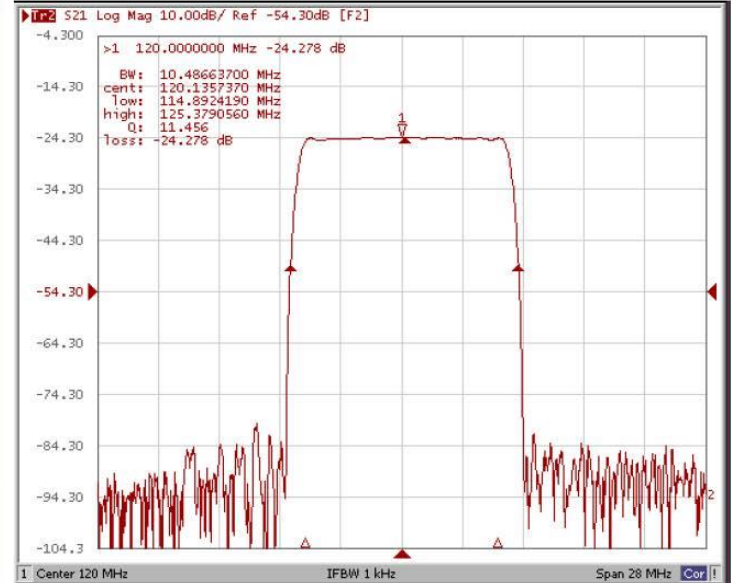
Bandwidth at -3.0 dB



Bandwidth at -10.0 dB



Bandwidth at -25.0 dB





120 MHz IF Saw Filter 9 MHz Bandwidth

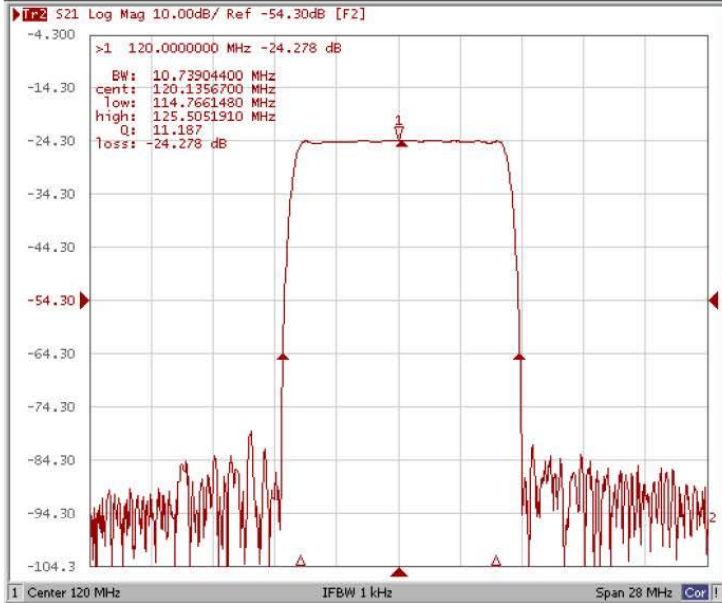
Part Number: AM120S603



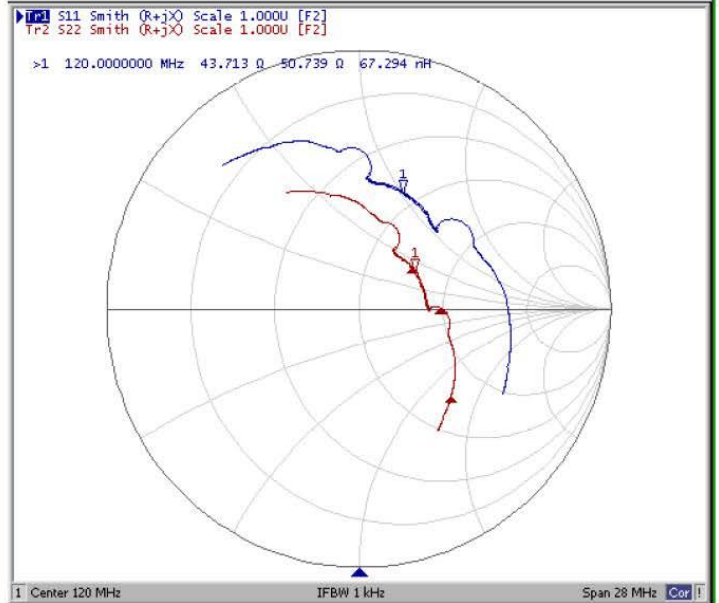
ANATECH ELECTRONICS INC
RF & Microwave Filters & Products

Frequency Response:

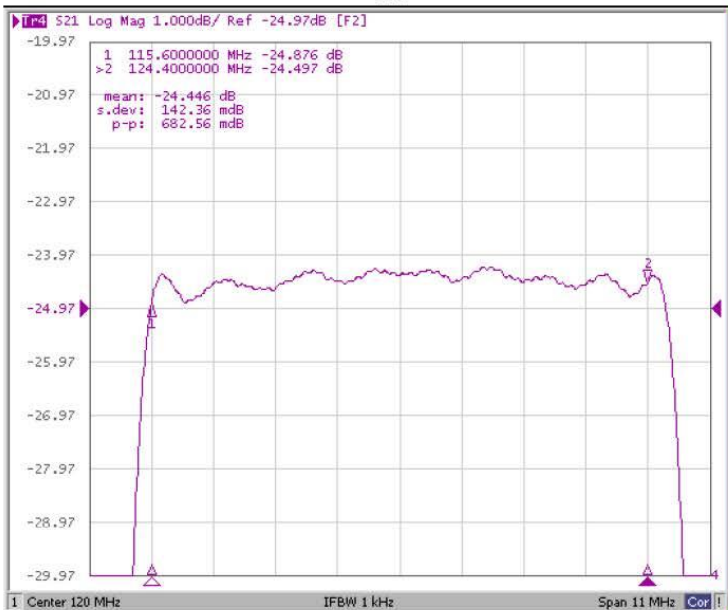
Bandwidth at -40.0 dB



Smith Chart



Ripple



Group Delay Variation

