



Electrical specifications

Center Frequency: 1227 MHz
Bandwidth: 20 MHz
Input / Output Impedance: 50 Ohms
Passband: 1217.6 – 1237.6 MHz
Passband Insertion Loss: 1217.6–1237.6 MHz 1.5 dB
Passband Ripple: 1.0 dB max
Passband Return Loss: 1217.6–1237.6 MHz 10.0 dB
Rejection: 1087.6 MHz 35 dB min
Rejection 2: 1192.6 MHz 7 dB max
Rejection 3: 1262.6 MHz 7 dB min
Rejection 4: 1367.6 MHz 30 dB min
Power Handling: 1 Watt max



Mechanical

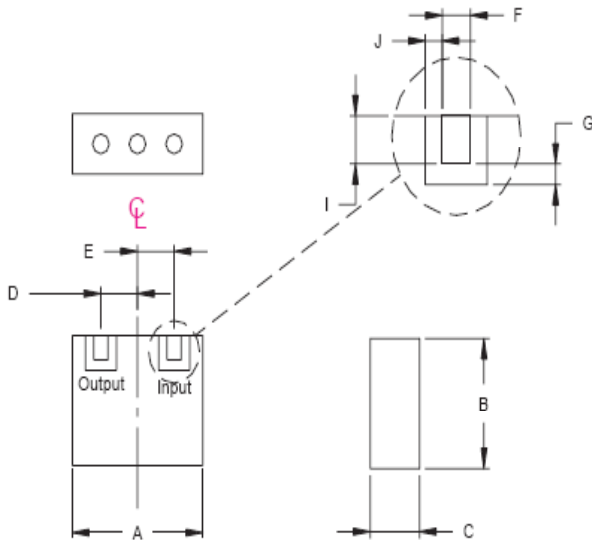
Mounting Method: SMT
Dimensions: 11.75 x 9.92 x 4.50 mm

Environmental

Operating Temperature: -30°C to 85°C
Storage Temperature: -50°C to +90°C

This product is RoHs compliant.

Mechanical Drawing



Dim	Nominal (mm)	Tolerance (mm) +/- or max
A	11.75	Max
B	9.92	Max
C	4.50	Max
D	3.30	0.127
E	3.30	0.127
F	1.27	0.127
G	0.76	0.127
I	1.78	0.127
J	0.76	0.127



ANATECH ELECTRONICS INC
RF & Microwave Filters & Products

GPS 1227 MHz BPF

Part Number: AM1227B417



Response Plot:

