



125 MHz IF Saw Filter 29 MHz Bandwidth

Part Number: AM125S604

ANATECH ELECTRONICS INC
RF & Microwave Filters & Products



Parameters Description	Unit	Minimum	Typical	Maximum
Center Frequency (Fo)	MHz	-	125.0	-
Insertion Loss at Fo	dB	-	24.3	26.0
Amplitude Ripple at Fo ± 14.80 MHz	dBp-p	-	0.65	1.0
Group Delay Variation at Fo ± 14.8 MHz	nsec	-	30	60
Absolute Delay at Fo	usec	-	1.89	-
Bandwidth at -1.0 dB	MHz	29.90	29.98	-
Bandwidth at -3.0 dB	MHz	-	30.30	-
Bandwidth at -40.0 dB	MHz	-	31.75	31.90
Temperature Coefficient	ppm/°C	-	-72	-
Attenuation Rejection				
Lower Sidelobe	dB	50	52	-
Upper Sidelobe	dB	50	52	-

Parameters Description	Unit	Minimum	Typical	Maximum
Operation Temperature Range	°C	-	+25	-
Storage Temperature Range	°C	-40	-	+85
Maximum DC Voltage	V	-	-	10
Maximum Input Power	dBm	-	-	10
Source Impedance (Single Ended) ₁	Ω	-	50	-
Load Impedance (Single Ended) ₁	Ω	-	50	-
Package Size and Type	20.0 x 12.6 x 5.05 mm		D	



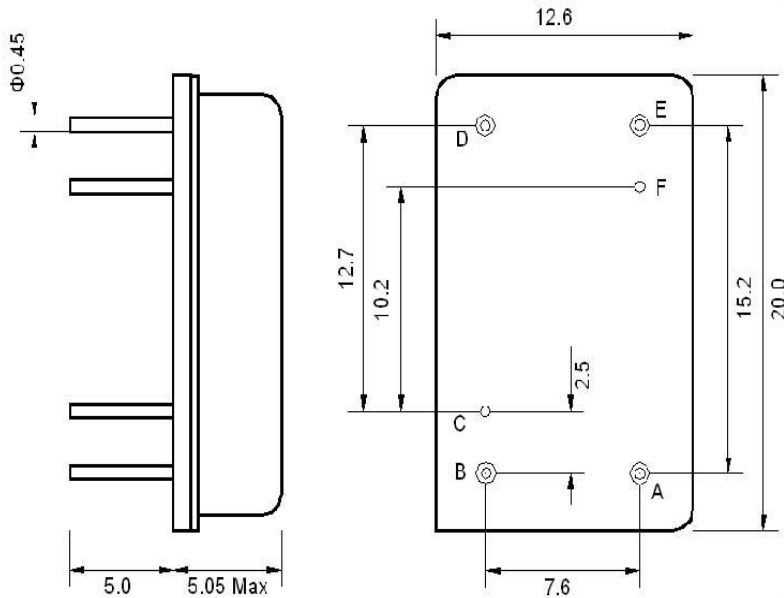
125 MHz IF Saw Filter 29 MHz Bandwidth

Part Number: AM125S604



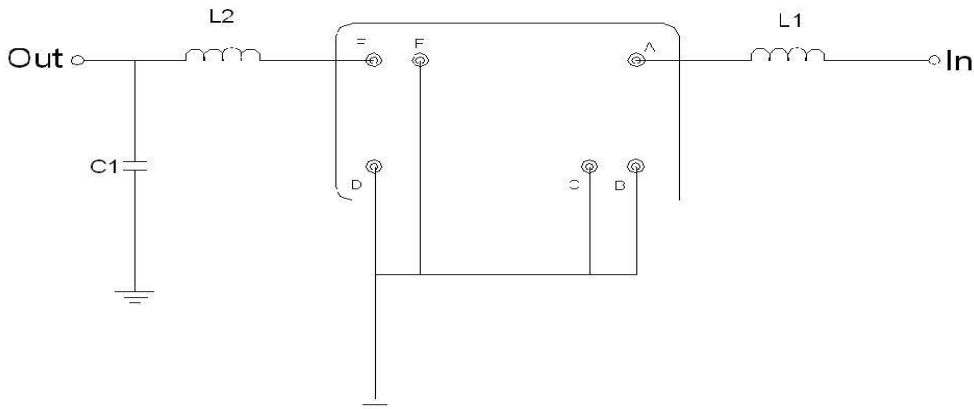
ANATECH ELECTRONICS INC
RF & Microwave Filters & Products

Outline Drawing:



Pin Description	
Ground	B C D F
Input	A
Output	E

Testing Environment:



Test Fixture & Values	
Input	L1 = 47 nH
Output	L2 = 56 nH, C1 = 24 pF
Source/Load Impedance	50 Ω



125 MHz IF Saw Filter 29 MHz Bandwidth

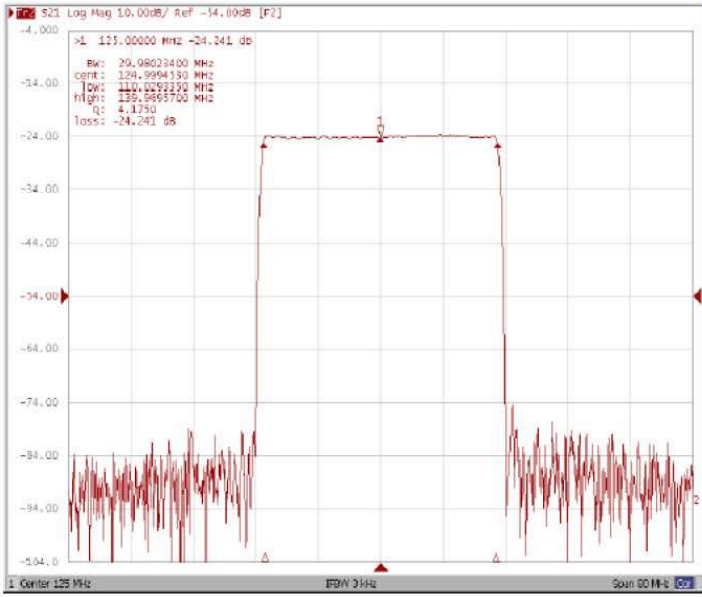
Part Number: AM125S604



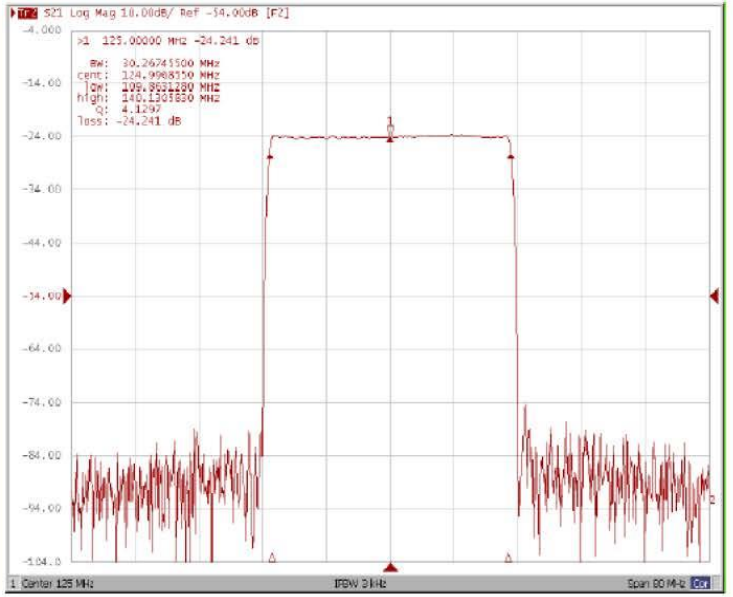
ANATECH ELECTRONICS INC
RF & Microwave Filters & Products

Frequency Response:

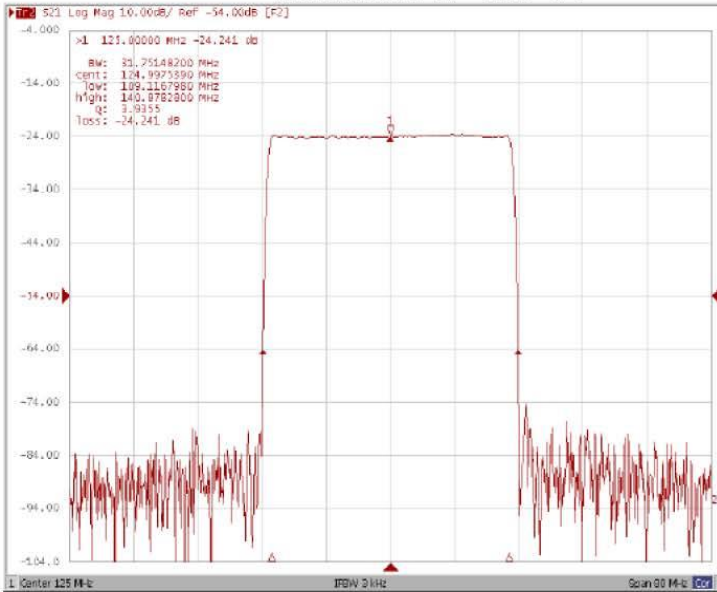
Bandwidth at -1.0 dB



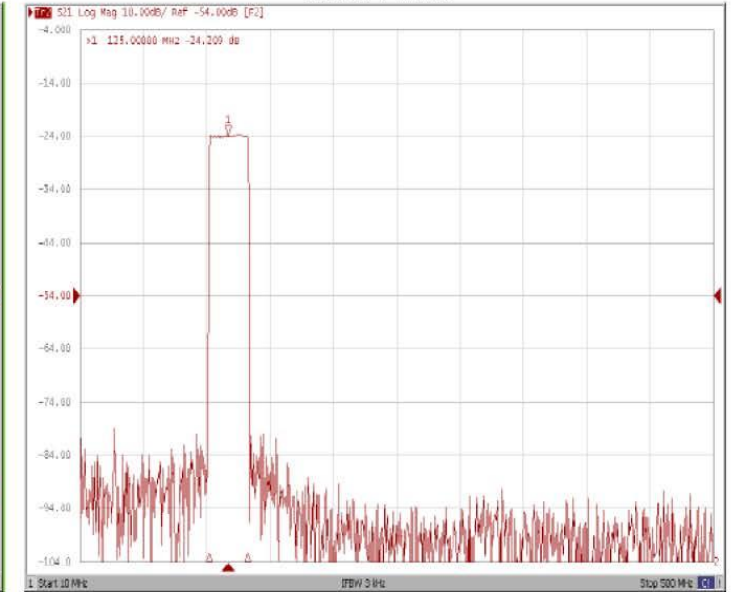
Bandwidth at -3.0 dB



Bandwidth at -40.0 dB



Wide-Band





125 MHz IF Saw Filter 29 MHz Bandwidth

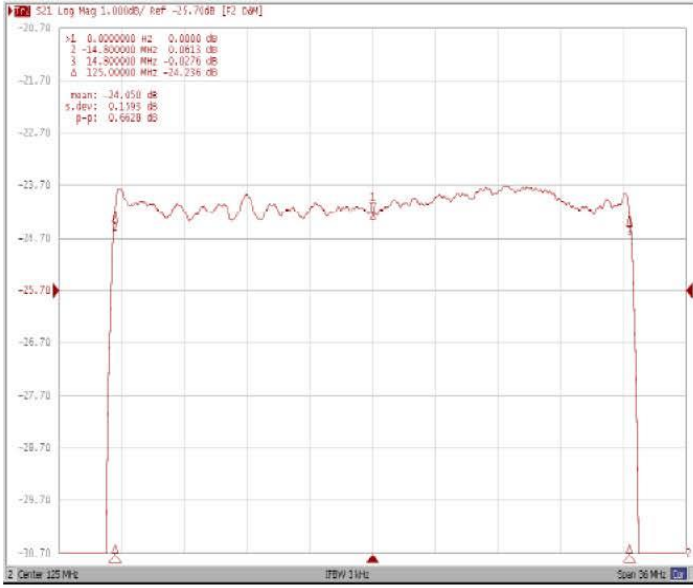
Part Number: AM125S604



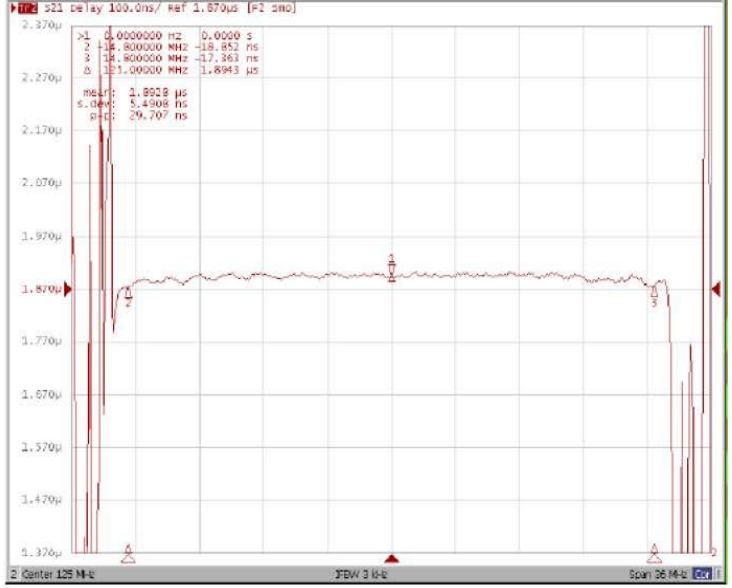
ANATECH ELECTRONICS INC
RF & Microwave Filters & Products

Frequency Response:

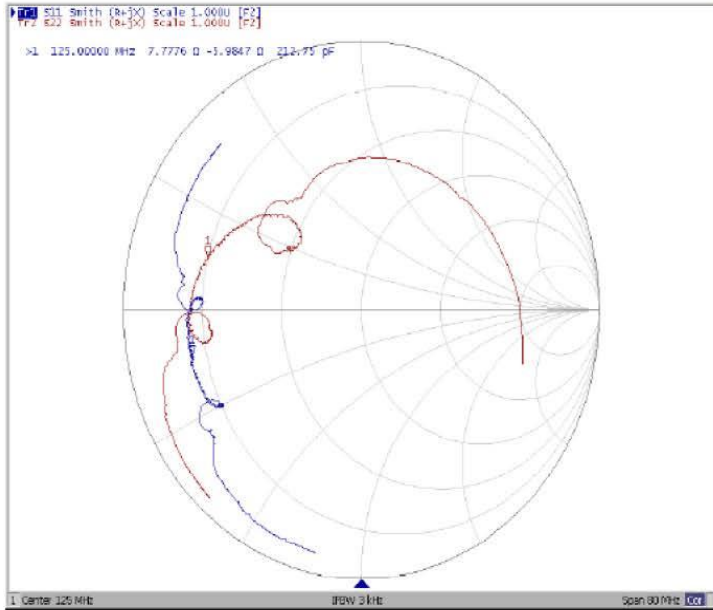
Ripple Variation Fo±14.80MHz



Group Delay Variation Fo±14.80MHz



Smith Chart



SWR

