



# 125 MHz IF Saw Filter

## Part Number: AM125S691



Parameters Description	Unit	Minimum	Typical	Maximum
Center Frequency (Fo)	MHz	124.85	125.0	125.15
Insertion Loss at Fo	dB	-	17.3	19.0
Amplitude Ripple at Fo ± 3.8 MHz	dBp-p	-	0.45	0.9
Group Delay Variation at Fo ± 3.8 MHz	nsec	-	25	60
Absolute Delay at Fo	usec	-	0.85	-
Bandwidth at -1.0 dB	MHz	9.00	9.40	-
Bandwidth at -3.0 dB	MHz	-	10.10	-
Bandwidth at -40.0 dB	MHz	-	13.30	15.00
Temperature Coefficient	ppm/°C	-	-18	-
<b>Attenuation Rejection</b>				
Lower Sidelobe	dB	-	48	-
Upper Sidelobe	dB	-	48	-

Parameters Description	Unit	Minimum	Typical	Maximum
Operation Temperature Range	°C	-20	-	+70
Storage Temperature Range	°C	-40	-	+85
Maximum DC Voltage	V	-	-	10
Maximum Input Power	dBm	-	-	10
Source Impedance (Single Ended) <sub>1</sub>	Ω	-	50	-
Load Impedance (Single Ended) <sub>1</sub>	Ω	-	50	-
Package Size and Type	13.3 x 6.5 x 1.8 mm		V	

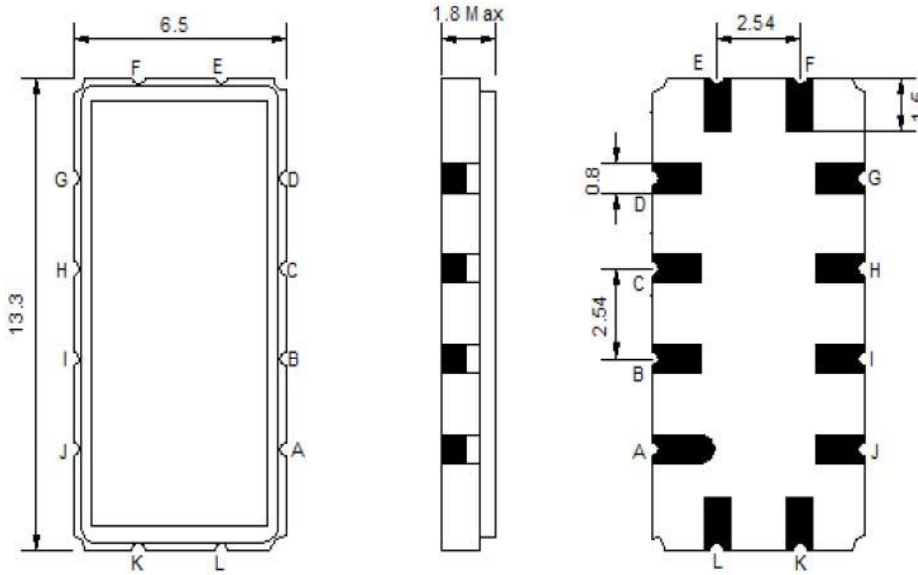


# 125 MHz IF Saw Filter

## Part Number: AM125S691

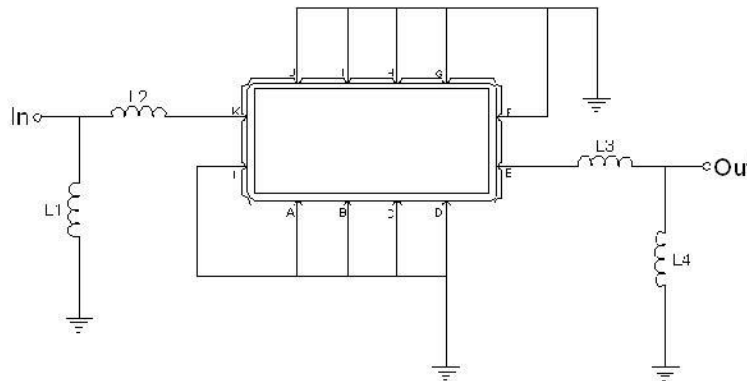


### Outline Drawing:



Pin Description	
Ground	A B C D F G H I J L
Input	K
Output	E

### Testing Environment:

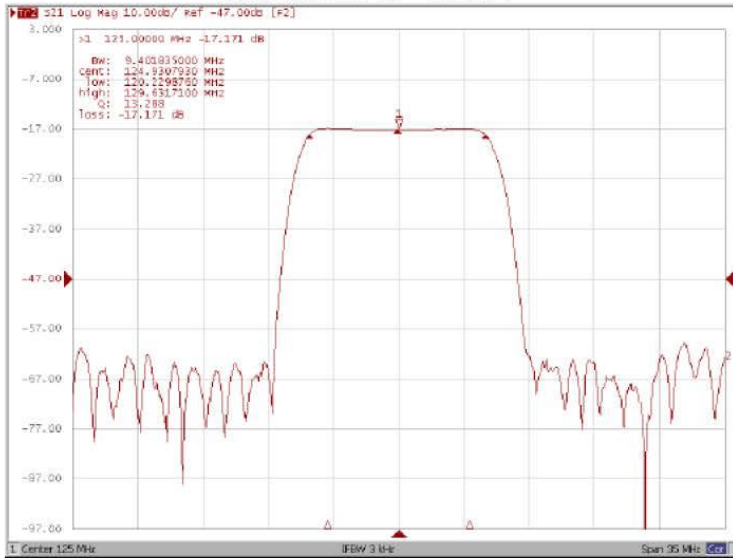


Test Fixture & Values	
Input	L1=56nH, L2=10nH
Output	L3=10nH, L4=47nH
Source/Load Impedance	50 Ω

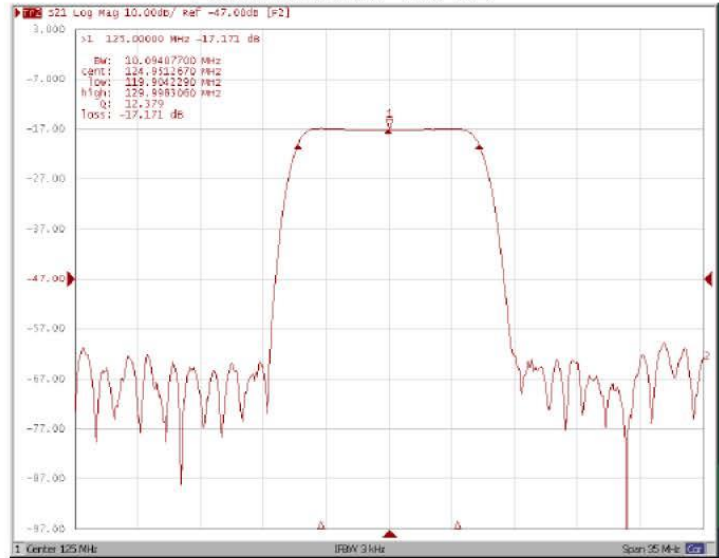


**Frequency Response:**

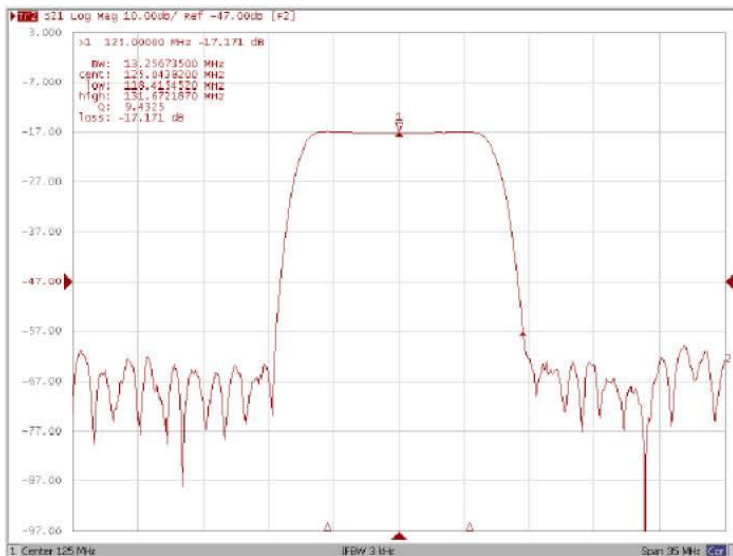
**Bandwidth at -1.0 dB**



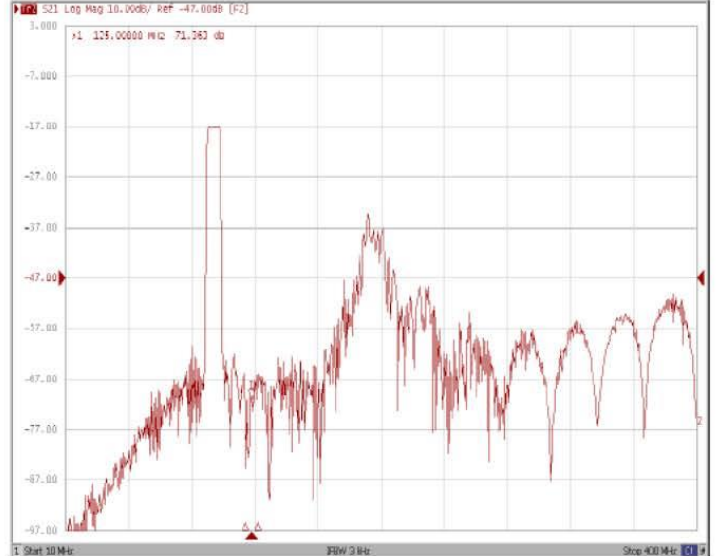
**Bandwidth at -3.0 dB**



**Bandwidth at -40.0 dB**



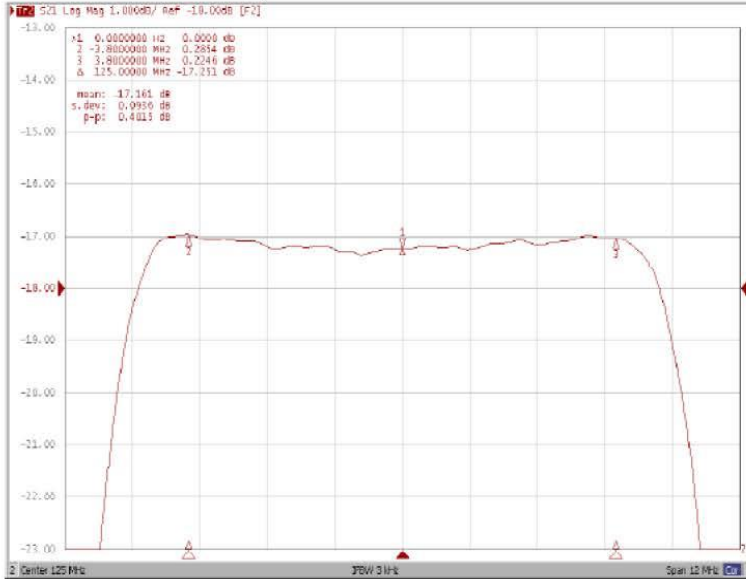
**Wide-Band**



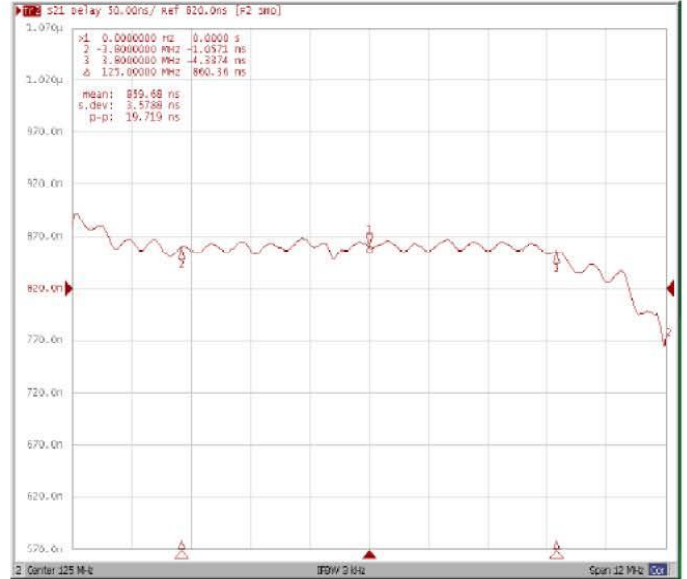


### Frequency Response:

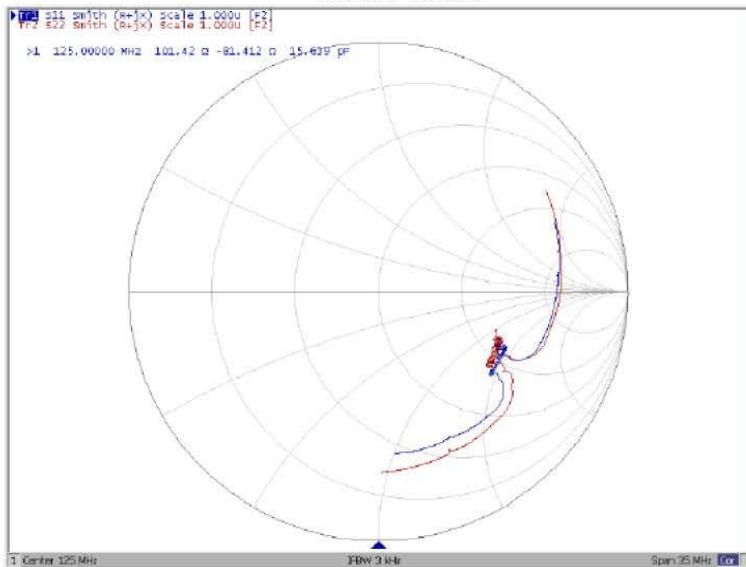
**Ripple Variation Fo±3.8MHz**



**Group Delay Variation Fo±3.8MHz**



**Smith Chart**



**SWR**

