



125 MHz IF Saw Filter

Part Number: AM125S692



Parameters Description	Unit	Minimum	Typical	Maximum
Center Frequency (Fo)	MHz	-	125.0	-
Insertion Loss at Fo	dB	-	20.6	22.0
Amplitude Ripple at Fo ± 3.8 MHz	dBp-p	-	0.45	0.9
Group Delay Variation at Fo ± 3.8 MHz	nsec	-	40	70
Absolute Delay at Fo	usec	-	0.88	-
Bandwidth at -1.0 dB	MHz	9.00	9.60	-
Bandwidth at -3.0 dB	MHz	-	10.30	-
Bandwidth at -40.0 dB	MHz	-	13.08	14.00
Temperature Coefficient	ppm/°C	-	-18	-
Attenuation Rejection				
Lower Sidelobe	dB	45	48	-
Upper Sidelobe	dB	45	48	-

Parameters Description	Unit	Minimum	Typical	Maximum
Operation Temperature Range	°C	-20	-	+70
Storage Temperature Range	°C	-40	-	+85
Maximum DC Voltage	V	-	-	10
Maximum Input Power	dBm	-	-	10
Source Impedance (Single Ended) ₁	Ω	-	50	-
Load Impedance (Single Ended) ₁	Ω	-	50	-
Package Size and Type		13.3 x 6.5 x 1.8 mm		V

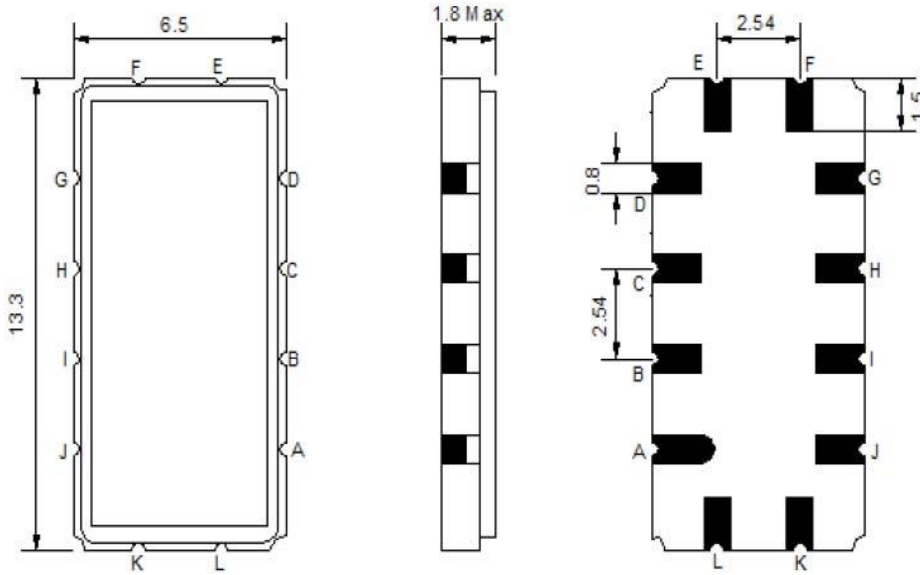


125 MHz IF Saw Filter

Part Number: AM125S692

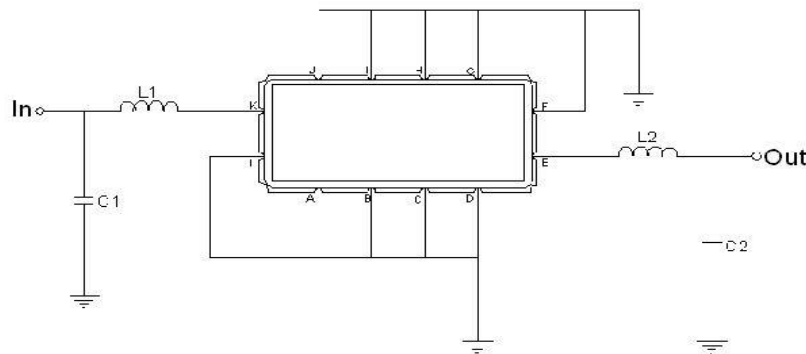


Outline Drawing:



Pin Description	
Ground	A B C D F G H I J L
Input	K
Output	E

Testing Environment:



Test Fixture & Values	
Input	L1=56nH, C1=43pF
Output	L2=47nH, C2=43pF
Source/Load Impedance	50 Ω



ANATECH ELECTRONICS INC
RF & Microwave Filters & Products

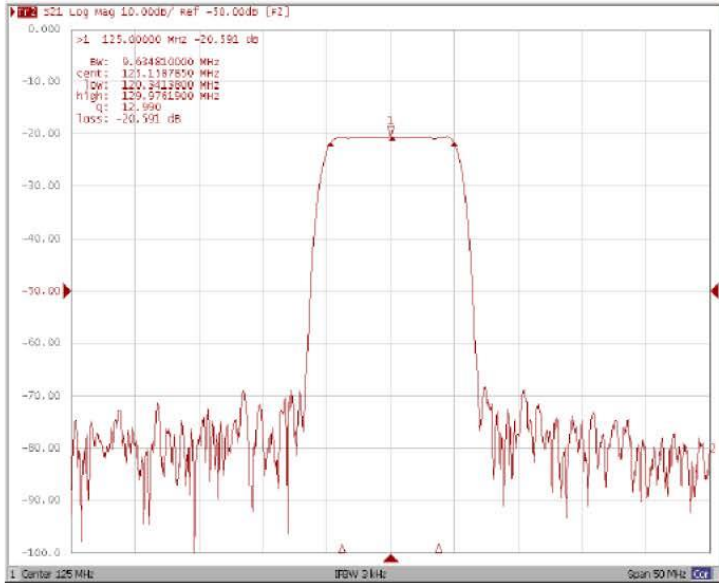
125 MHz IF Saw Filter

Part Number: AM125S692

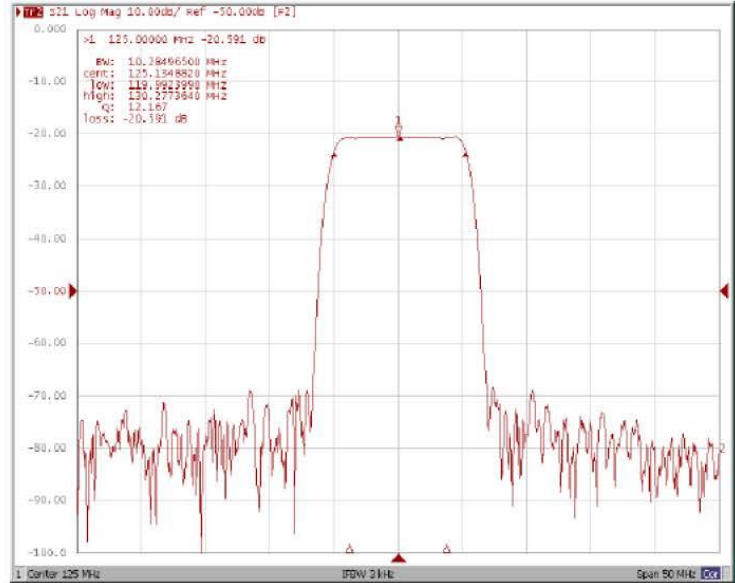


Frequency Response:

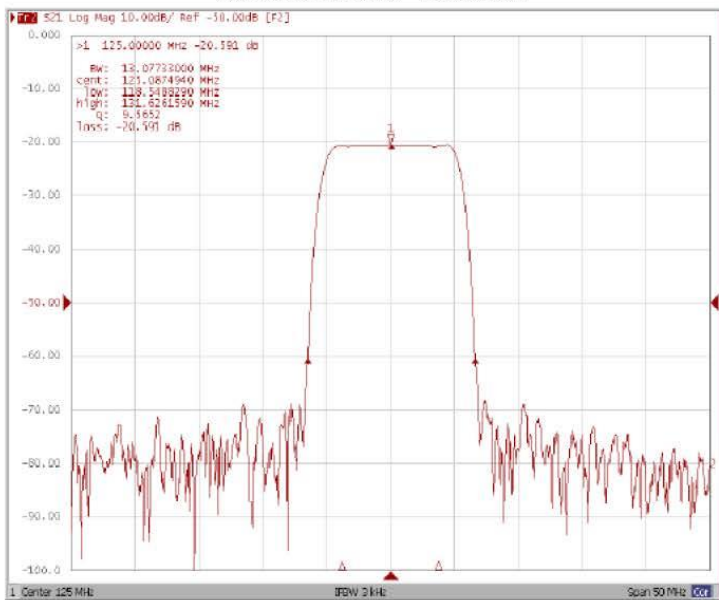
Bandwidth at -1.0 dB



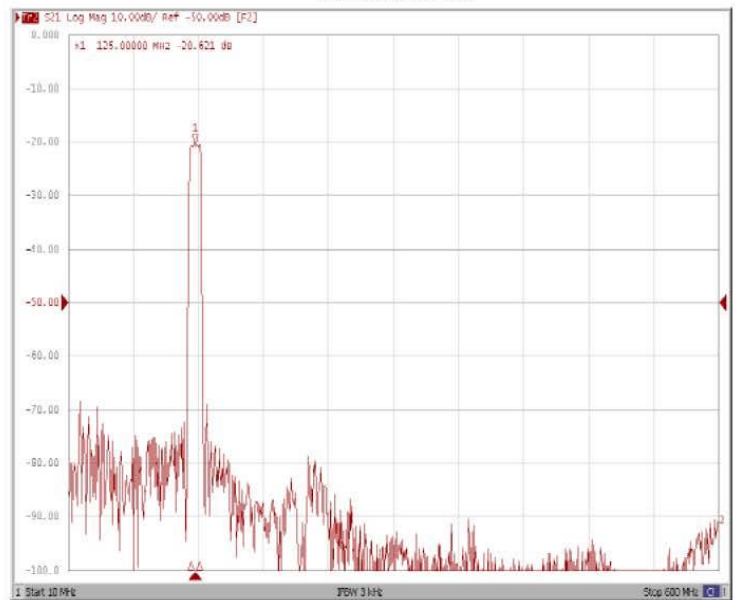
Bandwidth at -3.0 dB



Bandwidth at -40.0 dB



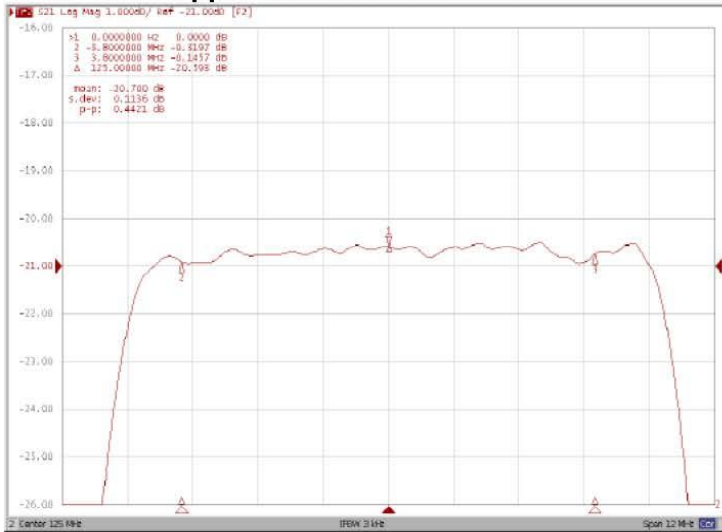
Wide-Band



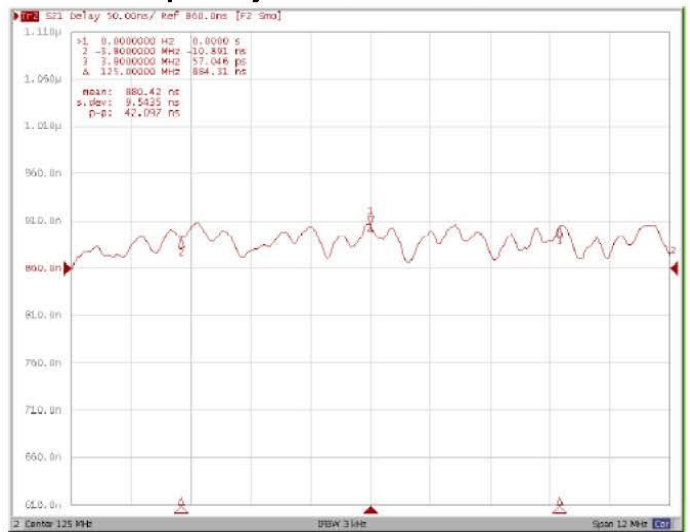


Frequency Response:

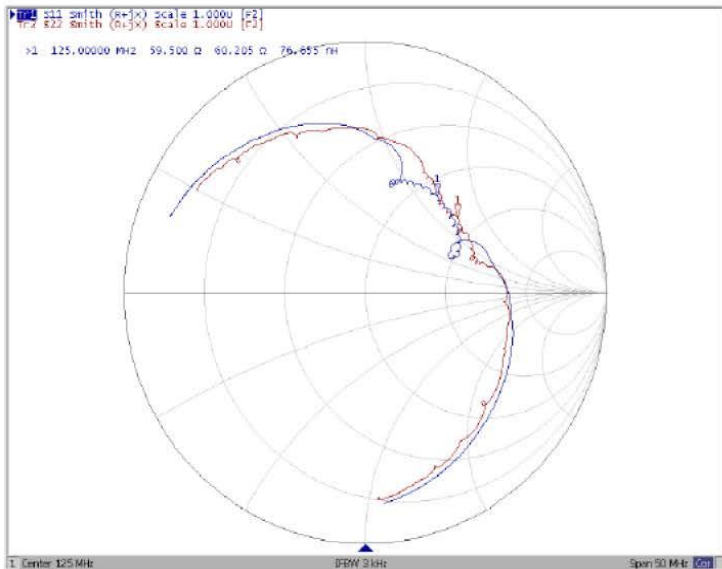
Ripple Variation Fo±3.8MHz



Group Delay Variation Fo±3.8MHz



Smith Chart



SWR

