



# Low-Loss 125 MHz IF Saw Filter

**Part Number: AM125S693**

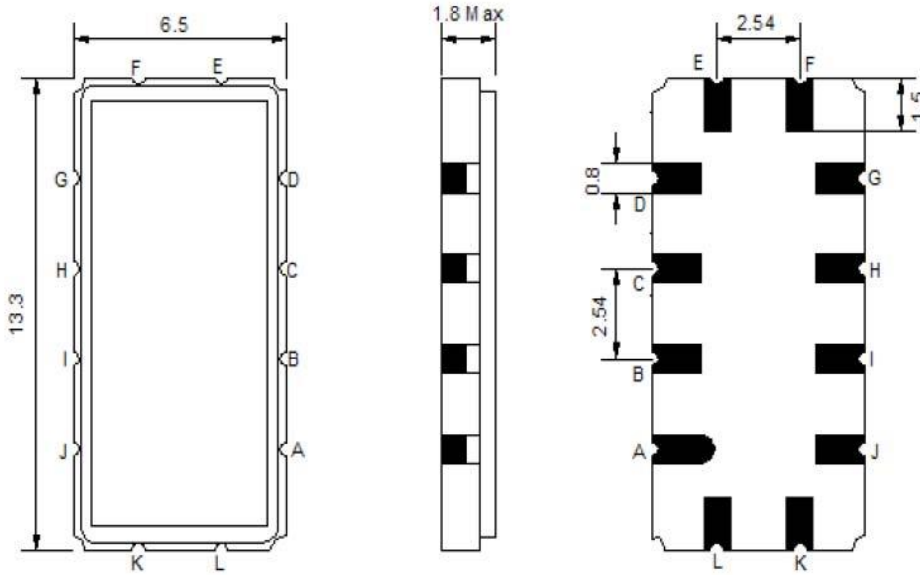


Parameters Description	Unit	Minimum	Typical	Maximum
Center Frequency (Fo)	MHz	-	125.0	-
Insertion Loss at Fo	dB	-	15.5	17.0
Amplitude Ripple at Fo ± 13.0 MHz	dBp-p	-	0.4	1.0
Group Delay Variation at Fo ± 13.0 MHz	nsec	-	25	50
Absolute Delay at Fo	usec	-	0.85	-
Bandwidth at -1.0 dB	MHz	27.5	28.5	-
Bandwidth at -3.0 dB	MHz	28.5	29.5	-
Bandwidth at -40.0 dB	MHz	-	33.3	34.5
Temperature Coefficient	ppm/°C	-	-86	-
<b>Attenuation Rejection</b>				
Lower Sidelobe	dB	40	47	-
Upper Sidelobe	dB	40	47	-

Parameters Description	Unit	Minimum	Typical	Maximum
Operation Temperature Range	°C	-30	-	+80
Storage Temperature Range	°C	-40	-	+85
Maximum DC Voltage	V	-	-	10
Maximum Input Power	dBm	-	-	10
Source Impedance (Single Ended) <sub>1</sub>	Ω	-	50	-
Load Impedance (Single Ended) <sub>1</sub>	Ω	-	50	-
Package Size and Type		13.3 x 6.5 x 1.8 mm		V

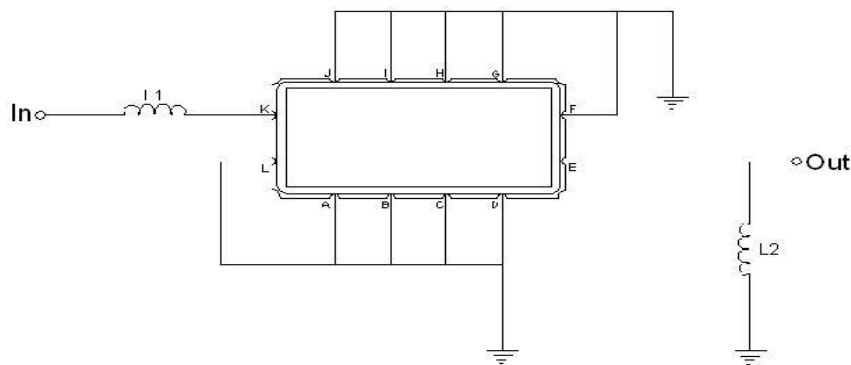


**Outline Drawing:**



Pin Description	
Ground	A B C D F G H I J L
Input	K
Output	E

**Testing Environment:**



Test Fixture & Values	
Input	L1=33nH Q>40
Output	L2=33nH Q>40
Source/Load Impedance	50 Ω



### Frequency Response:

