



Low-Loss 125 MHz IF Saw Filter

Part Number: AM125S695

ANATECH ELECTRONICS INC
RF & Microwave Filters & Products

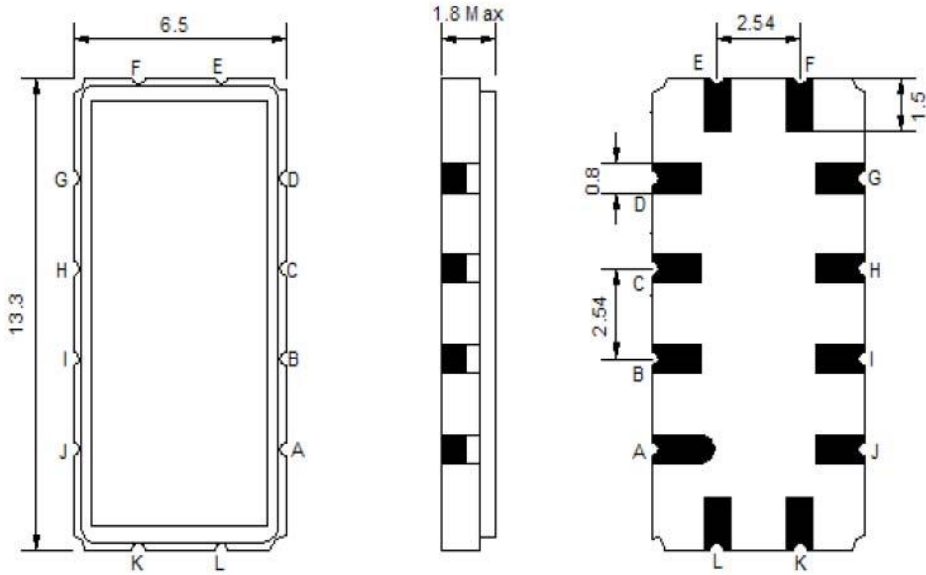


Parameters Description	Unit	Minimum	Typical	Maximum
Center Frequency (Fo)	MHz	-	125.0	-
Insertion Loss at Fo	dB	-	17.6	18.5
Amplitude Ripple Variation	dBp-p	-	0.35	1.0
Group Delay Variation	nsec	-	18.0	35.0
Absolute Delay at Fo	usec	-	0.724	-
Bandwidth at -1.0 dB	MHz	30.0	30.5	-
Bandwidth at -3.0 dB	MHz	31.0	31.5	-
Bandwidth at -40.0 dB	MHz	-	35.8	36.5
Temperature Coefficient	ppm/°C	-	-86	-
Attenuation Rejection				
Lower Sidelobe	dB	40	48	-
Upper Sidelobe	dB	40	48	-

Parameters Description	Unit	Minimum	Typical	Maximum
Operation Temperature Range	°C	-30	-	+80
Storage Temperature Range	°C	-40	-	+85
Maximum DC Voltage	V	-	-	10
Maximum Input Power	dBm	-	-	10
Source Impedance (Single Ended) ₁	Ω	-	50	-
Load Impedance (Single Ended) ₁	Ω	-	50	-
Package Size and Type		13.3 x 6.5 x 1.8 mm		V

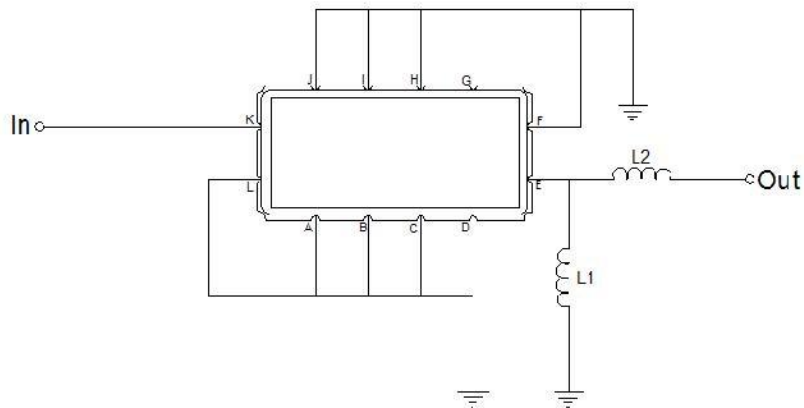


Outline Drawing:



Pin Description	
Ground	A B C D F G H I J L
Input	K
Output	E

Testing Environment:



Test Fixture & Values	
Input	-
Output	L1=82nH, L2=82nH
Source/Load Impedance	50 Ω



Low-Loss 125 MHz IF Saw Filter

Part Number: AM125S695



Frequency Response:

