



**128.0625 MHz IF SAW Filter**

**Part Number: AM128S696**

Parameters Description	Unit	Minimum	Typical	Maximum
Center Frequency (Fo)	MHz	127.9625	128.0625	128.1625
Insertion Loss at Fo	dB	-	20.0	24.0
Group Delay Variation (Fo±0.9375MHz)	nsec	-	60	120
Absolute Delay	usec	-	1.72	-
Temperature Coefficient	ppm/°C	-	-0.03	-
Passband Ripple (Fo±0.9375MHz)	dB	-	0.4	1.00
Bandwidth at -1dB	MHz	1.875	2.24	-
Bandwidth at -30dB	MHz	-	3.71	-
Bandwidth at -40dB	MHz	-	3.89	4.50
Ultimate Rejection	dB	48	53	-
Relative Attenuation Fo±2.1625MHz	dB	30	60	-

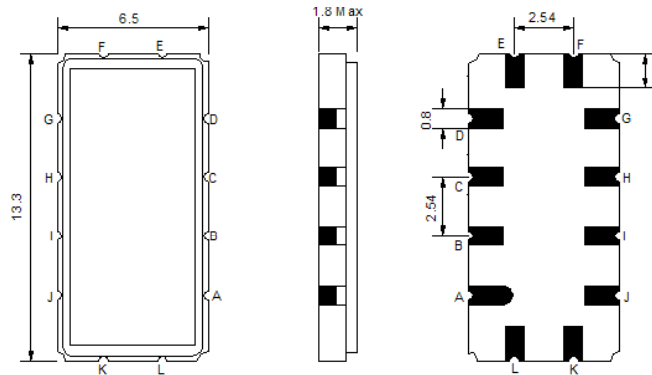
Parameters Description	Unit	Minimum	Typical	Maximum
Operation Temperature Range	°C	0	-	60
Storage Temperature Range	°C	-20	-	70
Maximum DC Voltage	V	-	-	10
Maximum Input Power	dBm	-	-	10
Source Impedance (single ended) <sup>(1)</sup>	Ω	-	50	-
Load Impedance (single ended) <sup>(1)</sup>	Ω	-	50	-
Package type & size	V			
Length x Width	mm <sup>2</sup>	-	13.3 x 6.5	-
Height	mm	-	-	1.8



**128.0625 MHz IF SAW Filter**

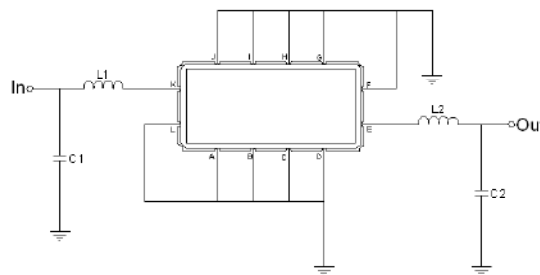
**Part Number: AM128S696**

**Package Dimensions**



Pin Description	
A, B, C, D, F, G, H, I, J, L	Ground
K	Input
E	Output

**Testing Environment**



Test Fixture & Values	
<b>Input</b>	L1=100 nH, C1=27pF
<b>Output</b>	L2=82 nH, C2=43pF
<b>Source/Load Impedance</b>	50 Ω

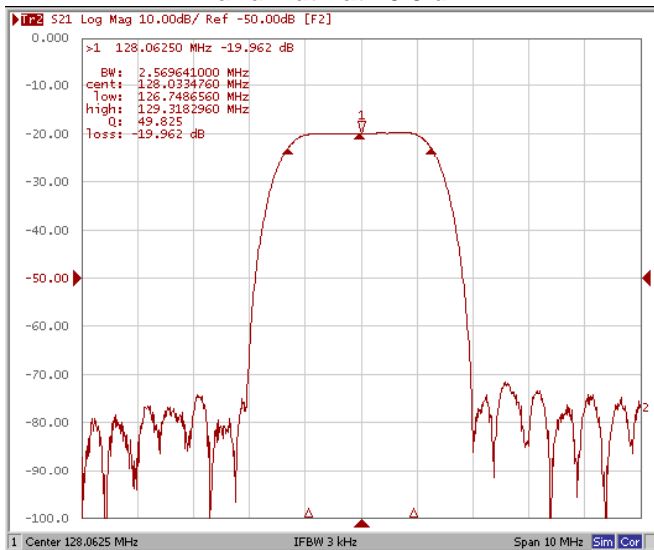


**128.0625 MHz IF SAW Filter**

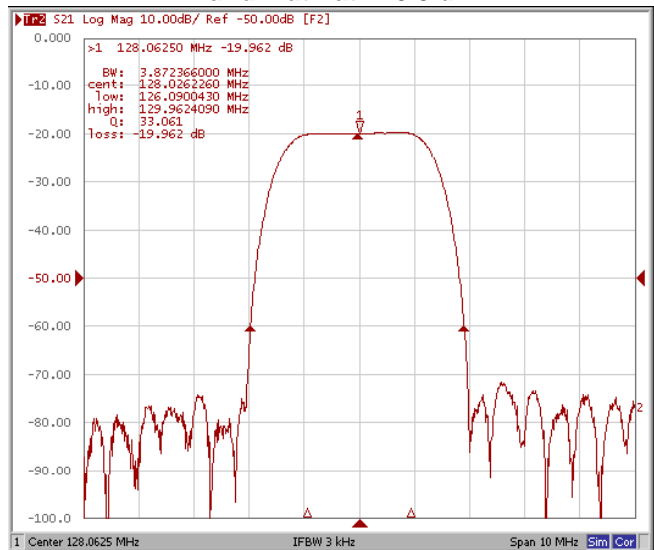
**Part Number: AM128S696**

**Frequency Response**

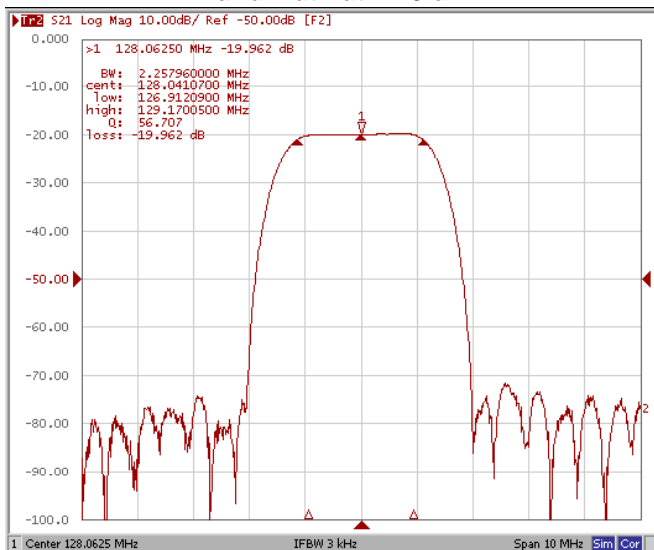
**Bandwidth at -3.0 dB**



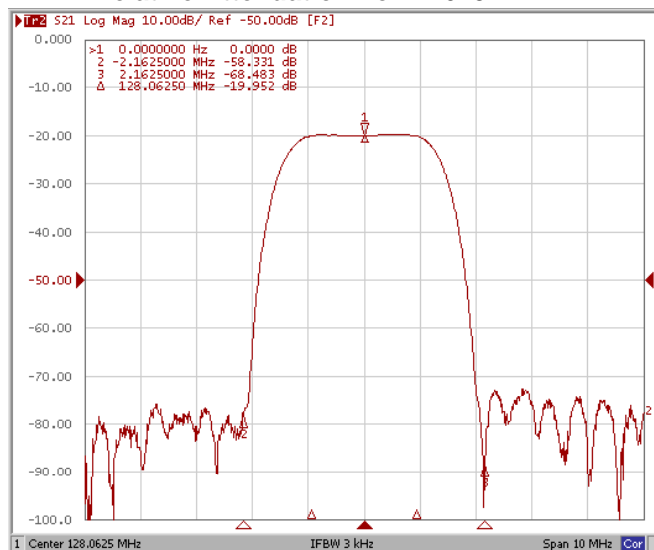
**Bandwidth at -40.0 dB**



**Bandwidth at -1.0 dB**



**Relative Attenuation Fo±2.1625MHz**



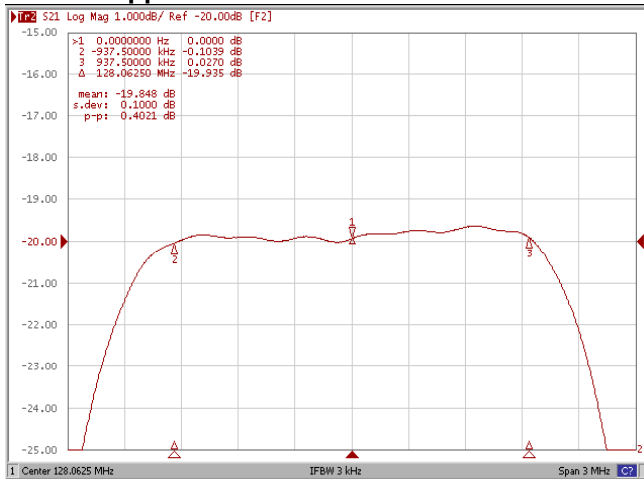


**128.0625 MHz IF SAW Filter**

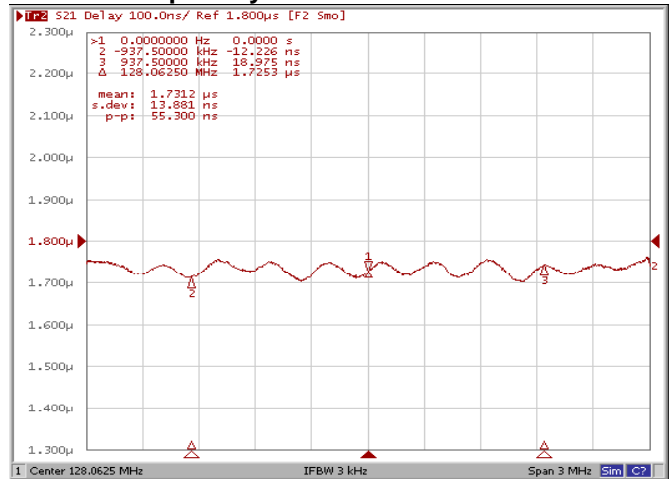
**Part Number: AM128S696**

**Frequency Response**

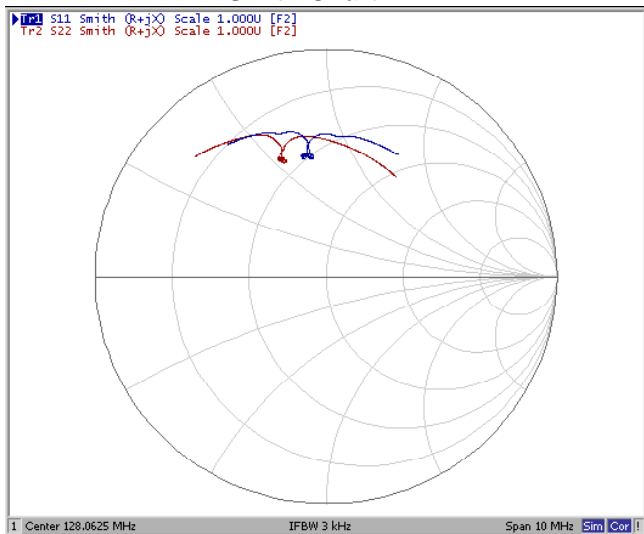
**Ripple Variation Fo±0.9375MHz**



**Group Delay Variation Fo±0.9375MHz**



**Smith Chart**



**VSWR**

