



130.9 MHz IF Saw Filter

Part Number: AM130S699



Parameters Description	Unit	Minimum	Typical	Maximum
Center Frequency (Fo)	MHz	-	130.9	-
Insertion Loss at Fo	dB	-	16.0	19.0
Amplitude Ripple Variation	dBp-p	-	0.5	1.00
Group Delay Variation at Fo ± 3.5 MHz	nsec	-	60	90
Absolute Delay at Fo	usec	-	0.76	-
Bandwidth at -1.0 dB	MHz	7.5	7.8	-
Bandwidth at -3.0 dB	MHz	8.4	8.7	-
Bandwidth at -40.0 dB	MHz	-	12.4	12.7
Temperature Coefficient	ppm/°C	-	-23	-
Relative Attenuation:				
Lower Sidelobe	dB	45	45	-
Upper Sidelobe	dB	40	45	-

Parameters Description	Unit	Minimum	Typical	Maximum
Operation Temperature Range	°C	-40	-	+85
Storage Temperature Range	°C	-40	-	+85
Maximum DC Voltage	V	-	-	10
Maximum Input Power	dBm	-	-	10
Source Impedance (Single Ended) ₁	Ω	-	50	-
Load Impedance (Single Ended) ₁	Ω	-	50	-
Package Size and Type	7.0 x 5.0 x 1.8 mm		S1	

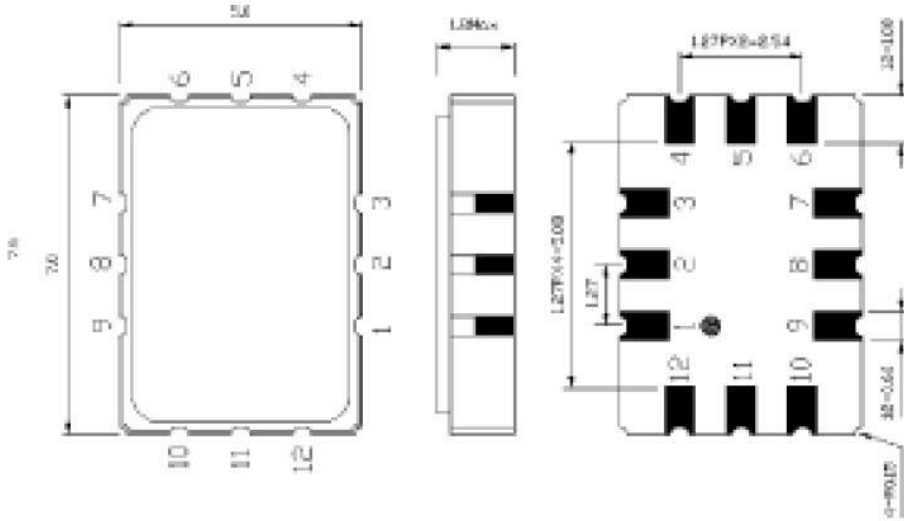


130.9 MHz IF Saw Filter

Part Number: AM130S699

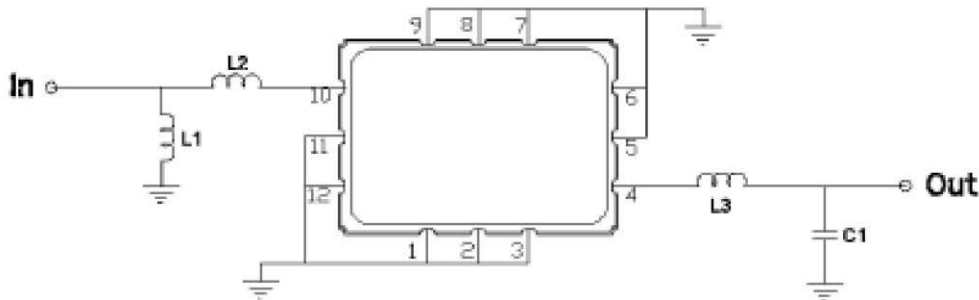


Outline Drawing:



Pin Description	
Ground	1, 2, 3, 5, 6, 7, 8, 9, 11, 12
Input	10
Output	4

Testing Environment:



Test Fixture & Values	
Input	L1=47 nH , L2=33 nH
Output	L3=150 nH , C1=30 pF
Source/Load Impedance	50 Ω

