



133 MHz IF Saw Filter 26 MHz Bandwidth

Part Number: AM133S606



ANATECH ELECTRONICS INC
RF & Microwave Filters & Products

Parameters Description	Unit	Minimum	Typical	Maximum
Center Frequency (Fo)	MHz	-	133.50	-
Insertion Loss at Fo	dB	-	23.50	25.0
Passband Ripple at Fo ± 12.5 MHz	dB	-	0.75	1.2
Group Delay Variation at Fo ± 12.5 MHz	nsec	-	40	80
Absolute Delay at Fo	usec	-	1.92	-
Bandwidth at -1.0 dB	MHz	25.00	26.20	-
Bandwidth at -10.0 dB	MHz	-	27.15	27.30
Bandwidth at -20.0 dB	MHz	-	27.60	27.80
Bandwidth at -30.0 dB	MHz	-	27.90	28.10
Bandwidth at -45.0 dB	MHz	-	28.25	-
Ultimate Rejection	dB	-	50	-
Temperature Coefficient	ppm/°C	-	-72	-

Parameters Description	Unit	Minimum	Typical	Maximum
Operation Temperature Range	°C	0	-	+70
Storage Temperature Range	°C	-30	-	+80
Maximum DC Voltage	V	-	-	10
Maximum Input Power	dBm	-	-	10
Source Impedance (Single Ended) ₁	Ω	-	50	-
Load Impedance (Single Ended) ₁	Ω	-	50	-
Package Size and Type	20.0 X 9.8 x 1.8 mm		V	



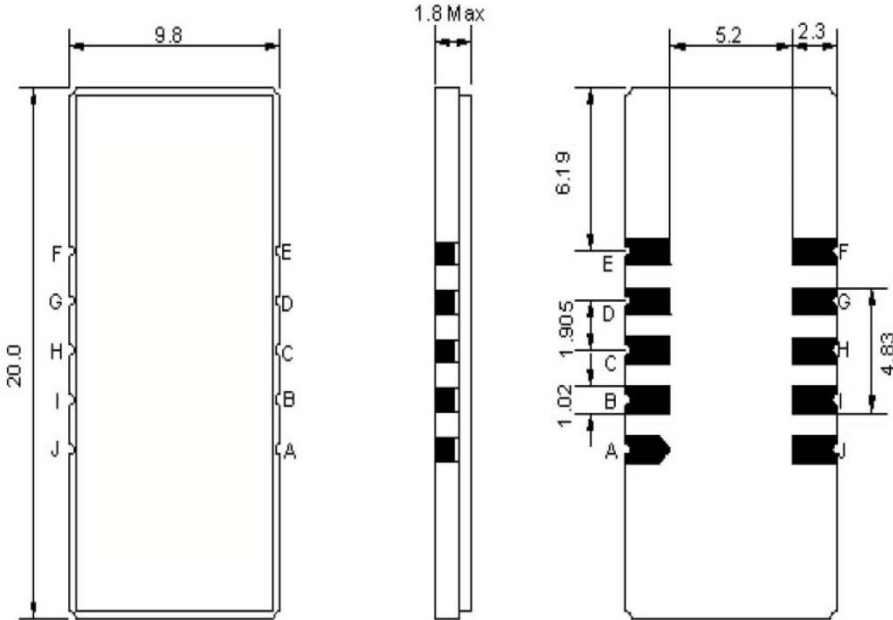
133 MHz IF Saw Filter 26 MHz Bandwidth

Part Number: AM133S606



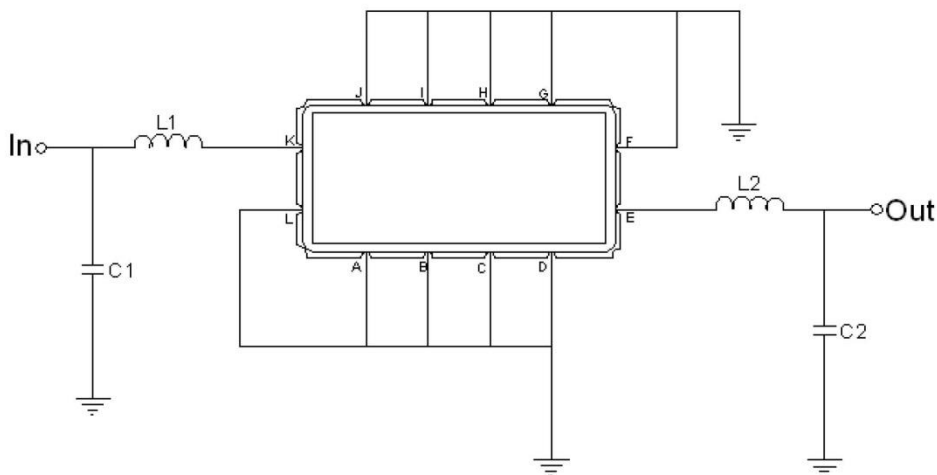
ANATECH ELECTRONICS INC
RF & Microwave Filters & Products

Outline Drawing:



Pin Description	
Ground	A B C D F G H I J L
Input	K
Output	E

Testing Environment:



Test Fixture & Values	
Input	L1=68 nH, C1=10 pF
Output	L2=82nH, C2=22 pF
Source/Load Impedance	50 Ω



133 MHz IF Saw Filter 26 MHz Bandwidth

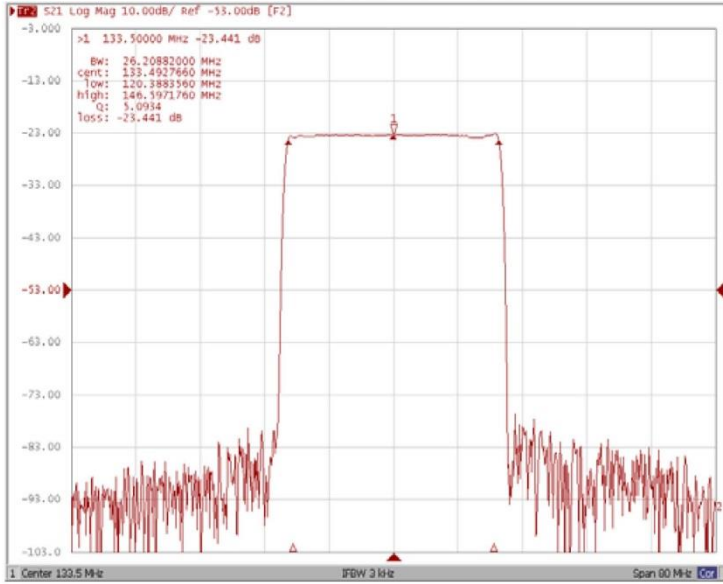
Part Number: AM133S606



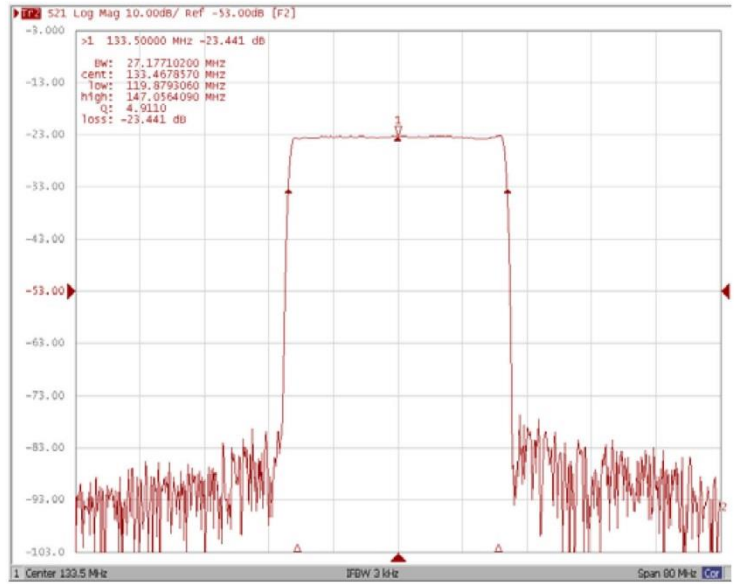
ANATECH ELECTRONICS INC
RF & Microwave Filters & Products

Frequency Response:

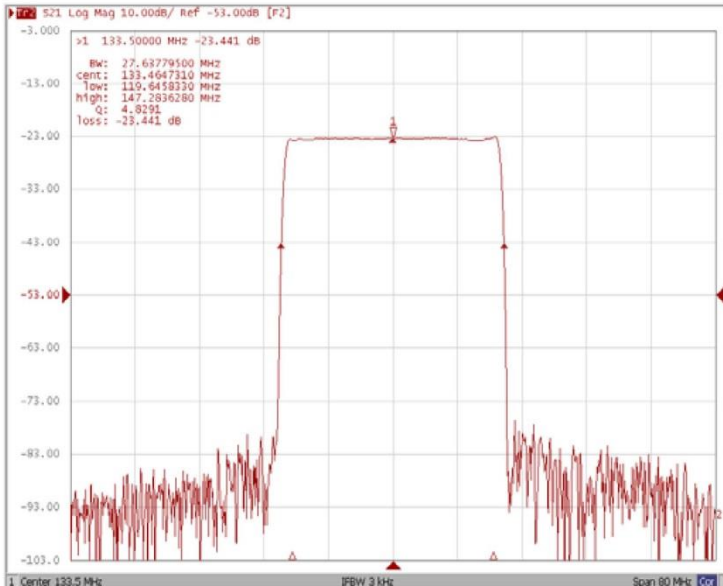
Bandwidth at -1.0 dB



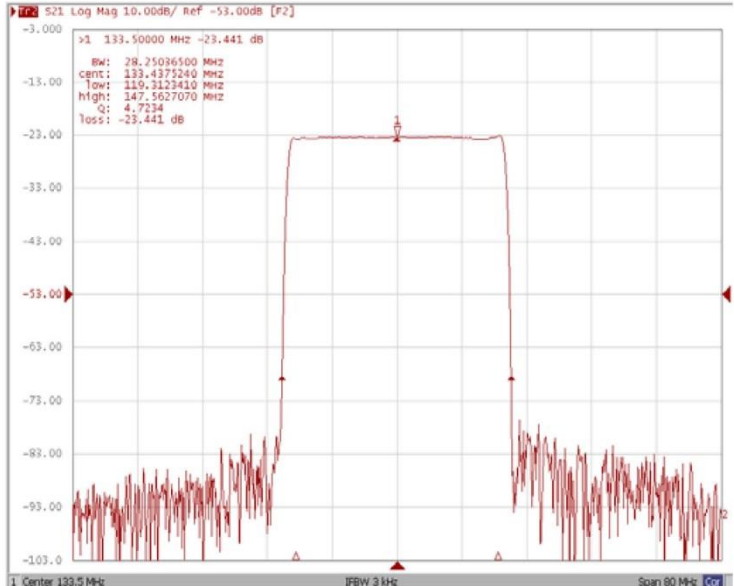
Bandwidth at -10.0 dB



Bandwidth at -20.0 dB



Bandwidth at -45.0 dB





133 MHz IF Saw Filter 26 MHz Bandwidth

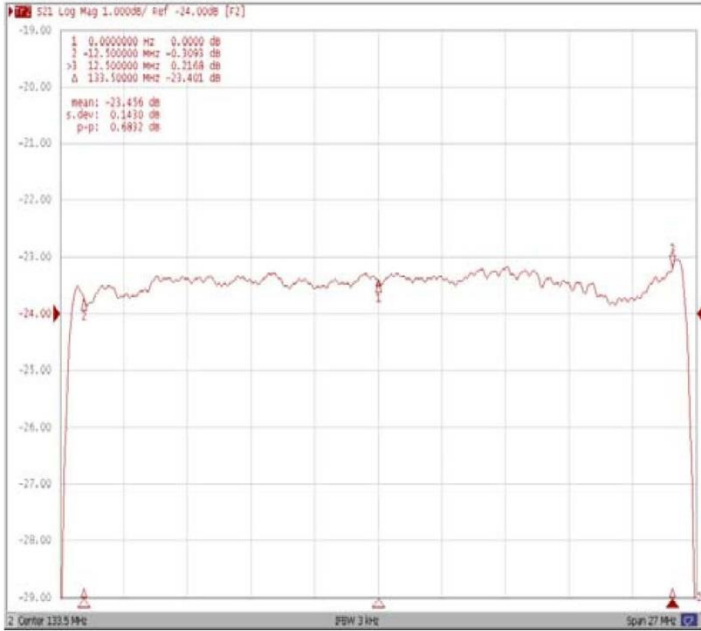
Part Number: AM133S606



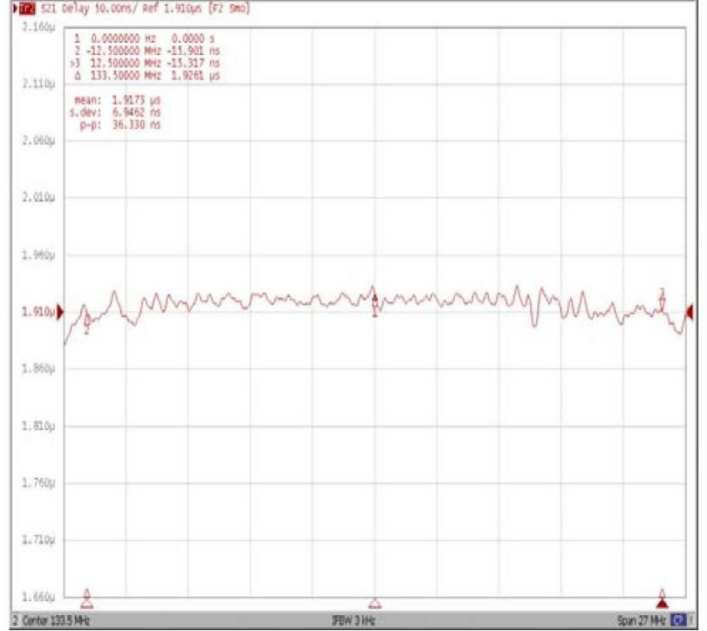
ANATECH ELECTRONICS INC
RF & Microwave Filters & Products

Frequency Response:

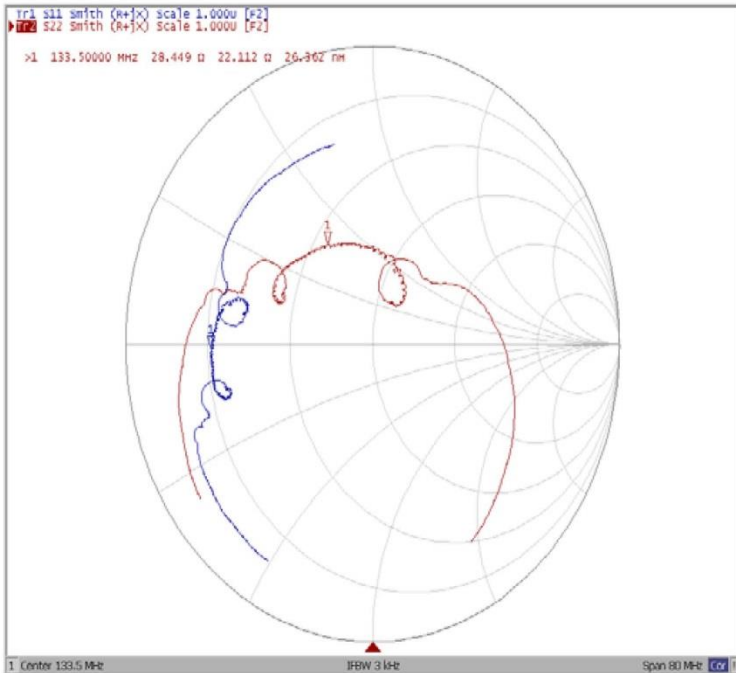
Ripple Variation Fo±12.5MHz



Group Delay Variation Fo±12.5MHz



Smith Chart



VSWR

