



135 MHz IF Saw Filter 10 MHz Bandwidth

Part Number: AM135S607

ANATECH ELECTRONICS INC
RF & Microwave Filters & Products



Parameters Description	Unit	Minimum	Typical	Maximum
Center Frequency (Fo)	MHz	-	135.0	-
Insertion Loss at Fo	dB	-	25.7	27.0
Passband Ripple at Fo ± 4.42 MHz	dB	-	0.75	1.00
Group Delay Variation at Fo ± 4.42 MHz	nsec	-	45	100
Absolute Delay at Fo	usec	-	3.08	-
Bandwidth at -1.0 dB	MHz	-	10.15	-
Bandwidth at -3.0 dB	MHz	-	10.50	-
Bandwidth at -40.0 Db	MHz	-	11.85	-
Ultimate Rejection	dB	-	52	-
Temperature Coefficient	ppm/°C	-	-18	-

Parameters Description	Unit	Minimum	Typical	Maximum
Operation Temperature Range	°C	0	-	+60
Storage Temperature Range	°C	-30	-	+80
Maximum DC Voltage	V	-	-	10
Maximum Input Power	dBm	-	-	10
Source Impedance (Single Ended) ₁	Ω	-	50	-
Load Impedance (Single Ended) ₁	Ω	-	50	-
Package Size and Type	20.0 X 9.8 x 1.8 mm		D1	



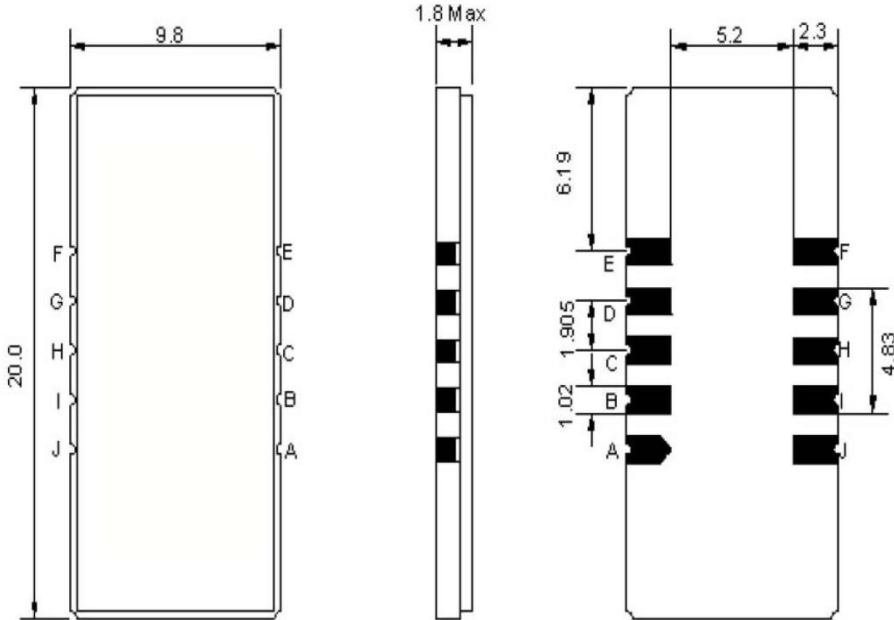
135 MHz IF Saw Filter 10 MHz Bandwidth

Part Number: AM135S607



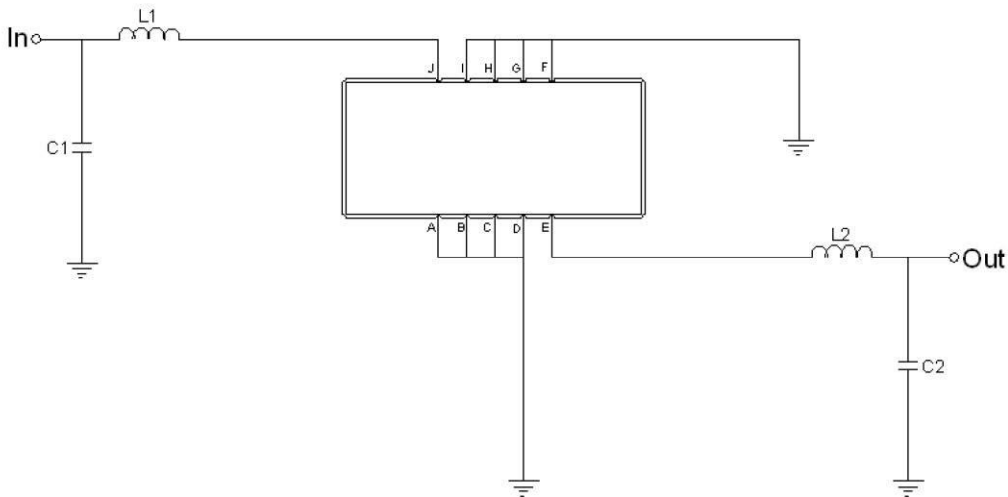
ANATECH ELECTRONICS INC
RF & Microwave Filters & Products

Outline Drawing:



Pin Description	
Ground	A B C D F G H I J L
Input	K
Output	E

Testing Environment:



Test Fixture & Values	
Input	L1=39nH, C1=62pF
Output	L2=47nH, C2=22pF
Source/Load Impedance	50 Ω



135 MHz IF Saw Filter 10 MHz Bandwidth

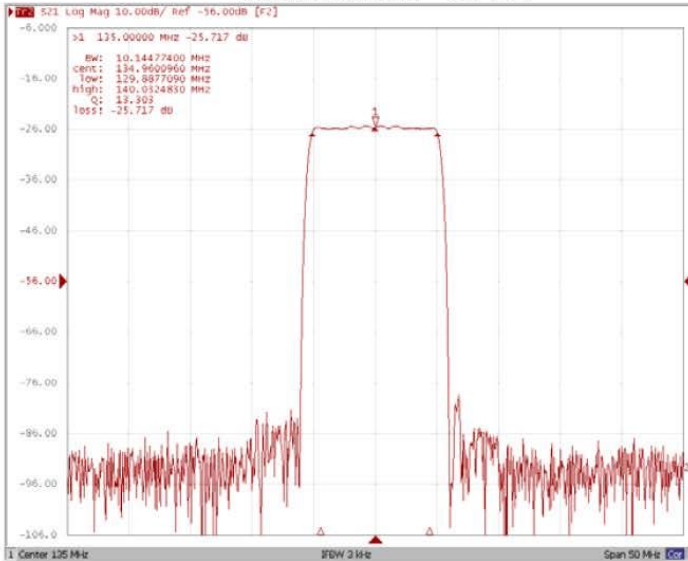
Part Number: AM135S607



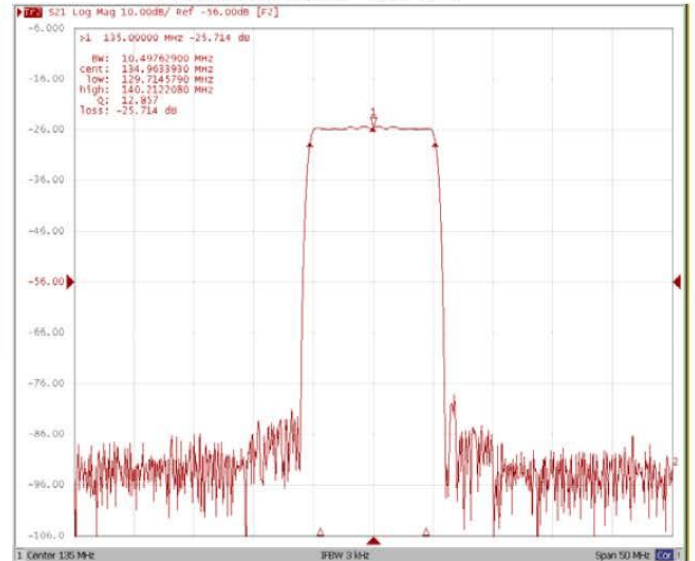
ANATECH ELECTRONICS INC
RF & Microwave Filters & Products

Frequency Response:

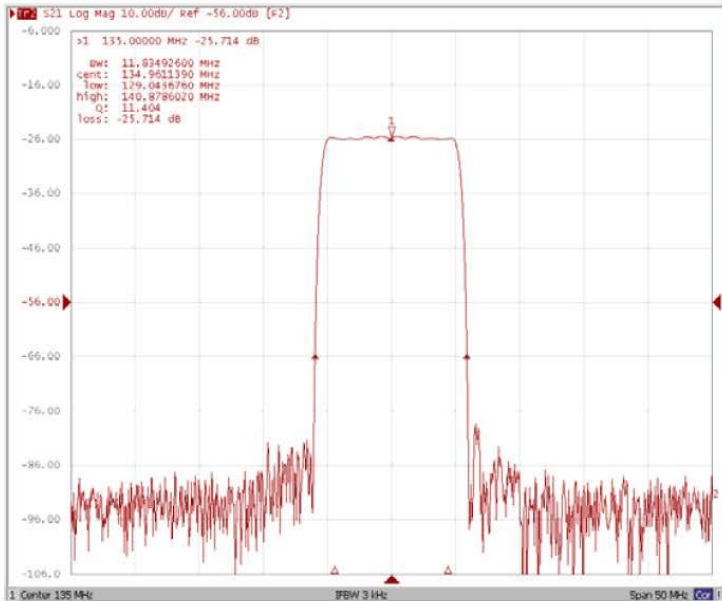
Bandwidth at -1.0 dB



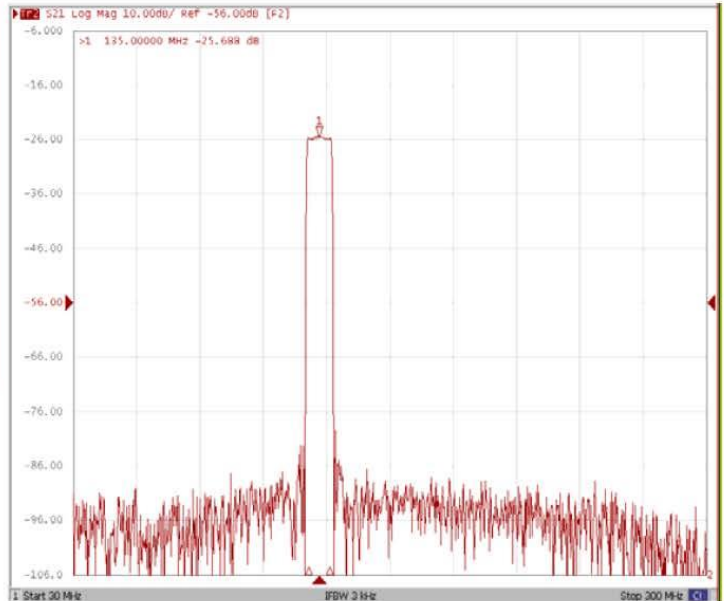
Bandwidth at -3.0 dB



Bandwidth at -40.0 dB



Wide Band





135 MHz IF Saw Filter 10 MHz Bandwidth

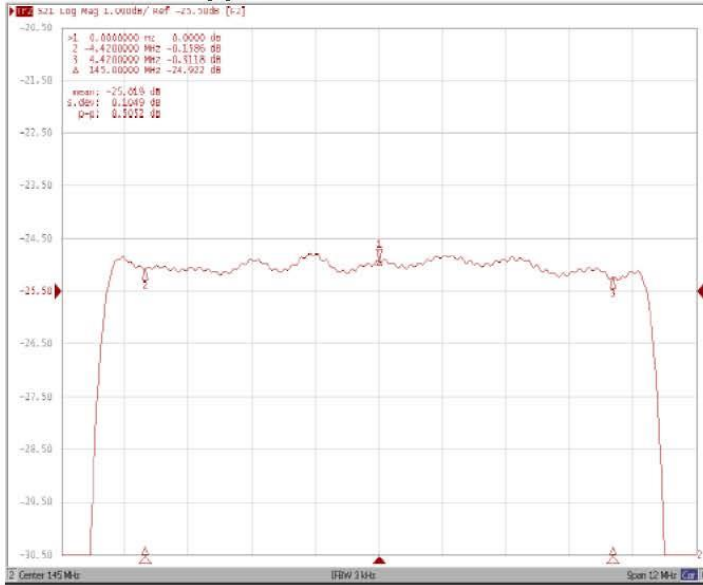
Part Number: AM135S607



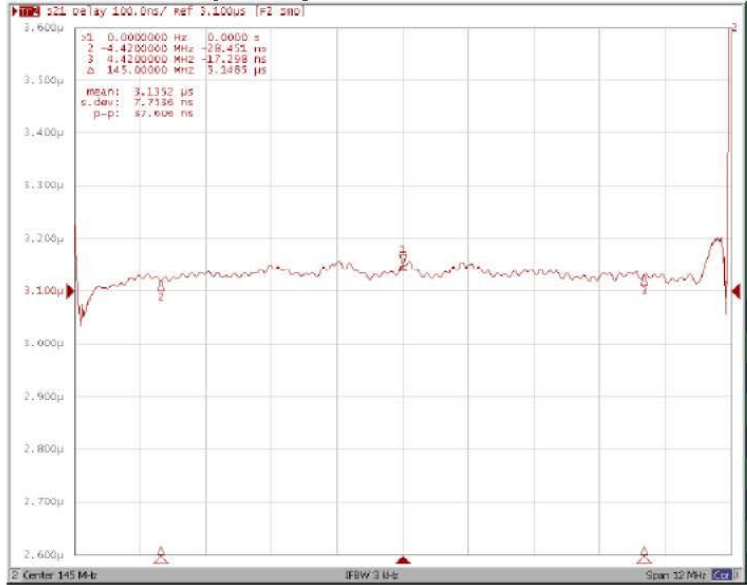
ANATECH ELECTRONICS INC
RF & Microwave Filters & Products

Frequency Response:

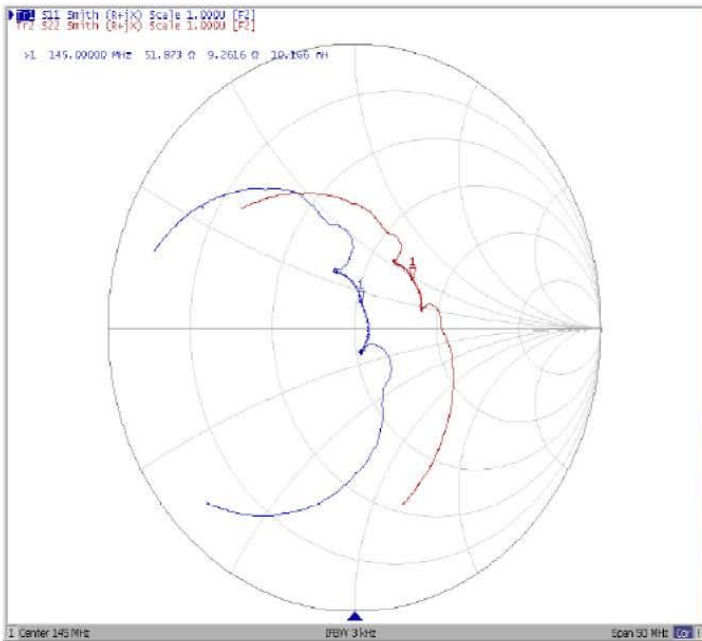
Ripple Variation Fo±4.42MHz



Group Delay Variation Fo±4.42MHz



Smith Chart



SWR

