



ANATECH ELECTRONICS INC
RF & Microwave Filters & Products

135 MHz IF Saw Filter

Part Number: AM135S700



Parameters Description	Unit	Minimum	Typical	Maximum
Center Frequency (Fo)	MHz	-	135.0	-
Insertion Loss at Fo	dB	-	17.0	20.0
Amplitude Ripple Variation	dBp-p	-	0.4	0.8
Group Delay Variation at Fo ± 3.5 MHz	nsec	-	40	80
Absolute Delay at Fo	usec	-	0.85	-
Bandwidth at -1.0 dB	MHz	7.3	7.6	-
Bandwidth at -3.0 dB	MHz	8.3	8.5	-
Bandwidth at -40.0 dB	MHz	-	12.0	12.5
Lower Sidelobe	dB	43	48	-
Upper Sidelobe	dB	43	48	-
Temperature Coefficient	ppm/°C	-	-23	-

Parameters Description	Unit	Minimum	Typical	Maximum
Operation Temperature Range	°C	-20	-	+70
Storage Temperature Range	°C	-40	-	+80
Maximum DC Voltage	V	-	-	10
Maximum Input Power	dBm	-	-	10
Source Impedance (Single Ended) ₁	Ω	-	50	-
Load Impedance (Single Ended) ₁	Ω	-	50	-
Package Size and Type	13.3 x 6.5 x 1.8 mm		V	

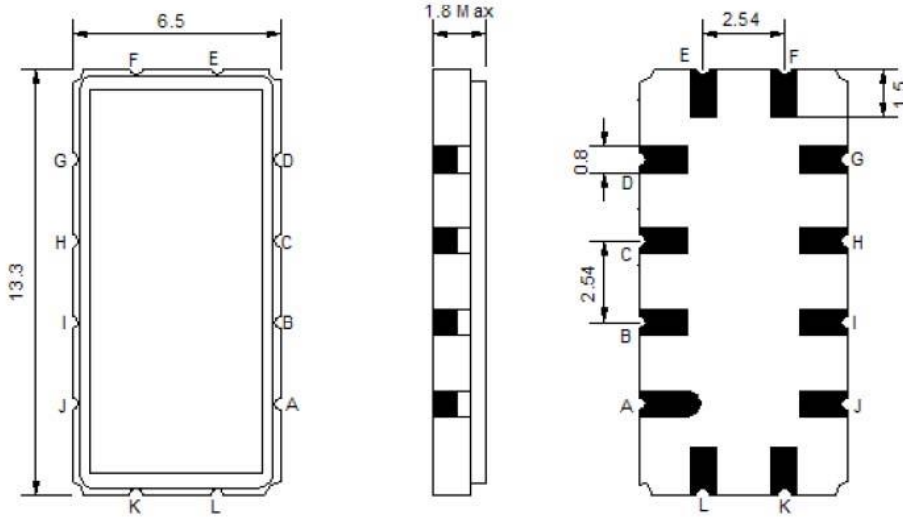


135 MHz IF Saw Filter

Part Number: AM135S700

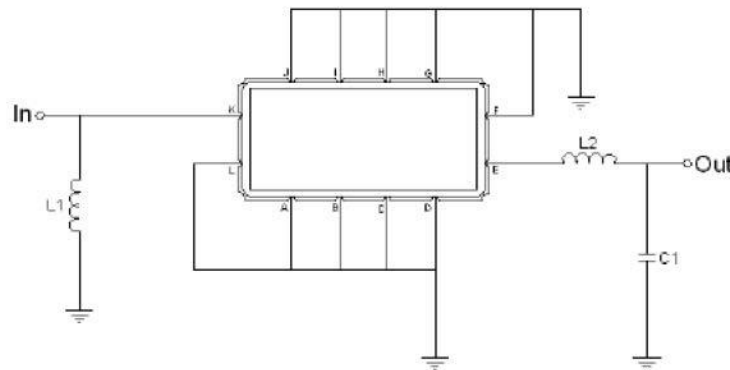


Outline Drawing:



Pin Description	
Ground	A B C D F G H I J L
Input	K
Output	E

Testing Environment:



Test Fixture & Values	
Input	L1=39 nH ,
Output	L2=100 nH , C2=20 pF
Source/Load Impedance	50 Ω



135 MHz IF Saw Filter

Part Number: AM135S700



Frequency Response:

