



135 MHz IF Saw Filter

Part Number: AM135S701



Parameters Description	Unit	Minimum	Typical	Maximum
Center Frequency (Fo)	MHz	-	135.0	-
Insertion Loss at Fo	dB	-	17.0	19.0
Amplitude Ripple Variation	dB _{p-p}	-	0.5	1.0
Group Delay Variation at Fo ± 3.5 MHz	nsec	-	45	90
Absolute Delay at Fo	usec	-	0.76	-
Bandwidth at -1.0 dB	MHz	7.5	7.8	-
Bandwidth at -3.0 dB	MHz	8.4	8.6	-
Bandwidth at -40.0 dB	MHz	-	12.5	12.8
Lower Sidelobe	dB	40	45	-
Upper Sidelobe	dB	40	45	-
Temperature Coefficient	ppm/°C	-	-23	-

Parameters Description	Unit	Minimum	Typical	Maximum
Operation Temperature Range	°C	-40	-	+85
Storage Temperature Range	°C	-40	-	+85
Maximum DC Voltage	V	-	-	10
Maximum Input Power	dBm	-	-	10
Source Impedance (Single Ended) ₁	Ω	-	50	-
Load Impedance (Single Ended) ₁	Ω	-	50	-
Package Size and Type	7.0 x 5.0 x 1.8 mm		S1	

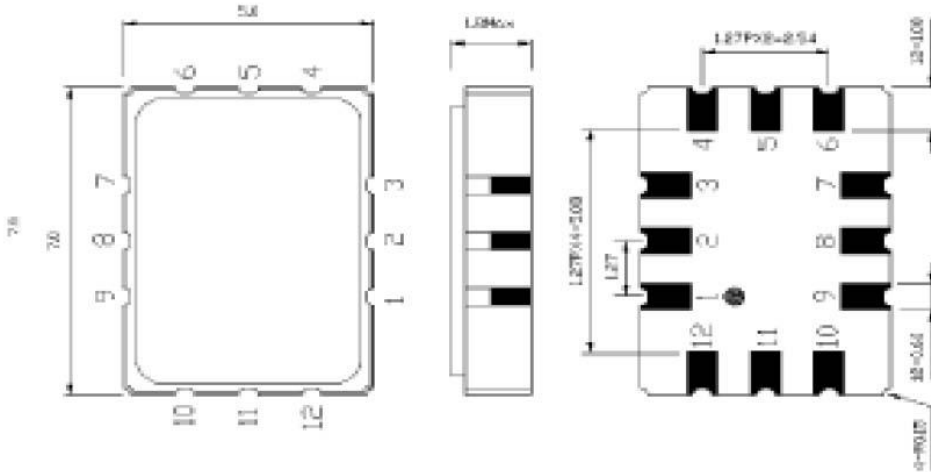


135 MHz IF Saw Filter

Part Number: AM135S701

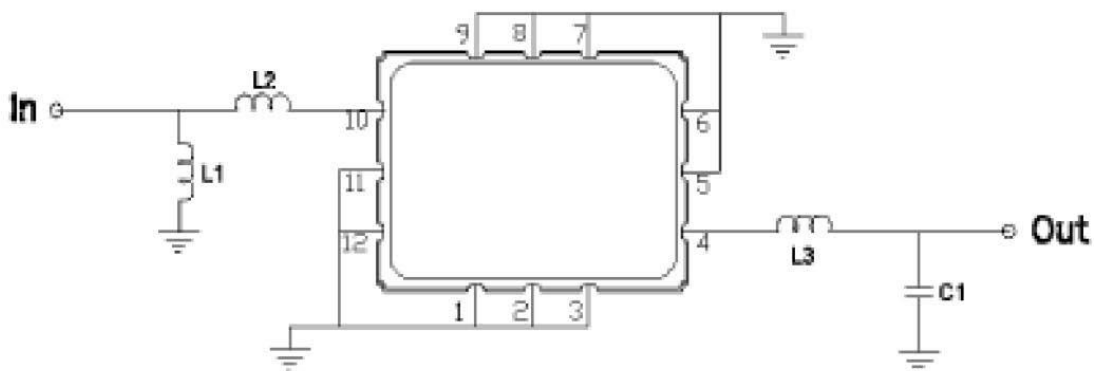


Outline Drawing:



Pin Description	
Ground	A B C D F G H I J L
Input	K
Output	E

Testing Environment:



Test Fixture & Values	
Input	L1=39 nH , L2=27 nH
Output	L3=150 nH , C1=20 pF
Source/Load Impedance	50 Ω



135 MHz IF Saw Filter

Part Number: AM135S701



Frequency Response:

