



135 MHz IF Saw Filter

Part Number: AM135S702

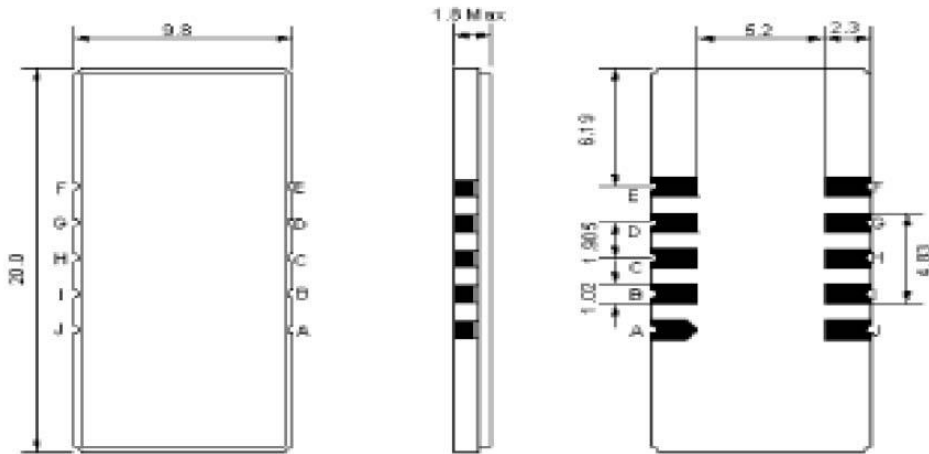


Parameters Description	Unit	Minimum	Typical	Maximum
Center Frequency (Fo)	MHz	134.85	135.0	135.15
Insertion Loss at Fo	dB	-	16.0	18.0
Passband Ripple at Fo ± 4.5 MHz	dB	-	0.45	1.00
Group Delay Variation at Fo ± 4.5 MHz	nsec	-	50	100
Absolute Delay at Fo	usec	-	1.45	-
Bandwidth at -1.0 dB	MHz	9.80	10.00	-
Bandwidth at -3.0 dB	MHz	-	10.52	-
Bandwidth at -20.0 dB	MHz	-	11.80	-
Bandwidth at -40.0 dB	MHz	-	12.80	13.20
Ultimate Rejection	dB	-	50	-
Temperature Coefficient	ppm/°C	-	-18	-

Parameters Description	Unit	Minimum	Typical	Maximum
Operation Temperature Range	°C	0	-	+60
Storage Temperature Range	°C	-30	-	+80
Maximum DC Voltage	V	-	-	10
Maximum Input Power	dBm	-	-	10
Source Impedance (Single Ended) ₁	Ω	-	50	-
Load Impedance (Single Ended) ₁	Ω	-	50	-
Package Size and Type	20.0 x 9.8 x 1.8 mm		D1	

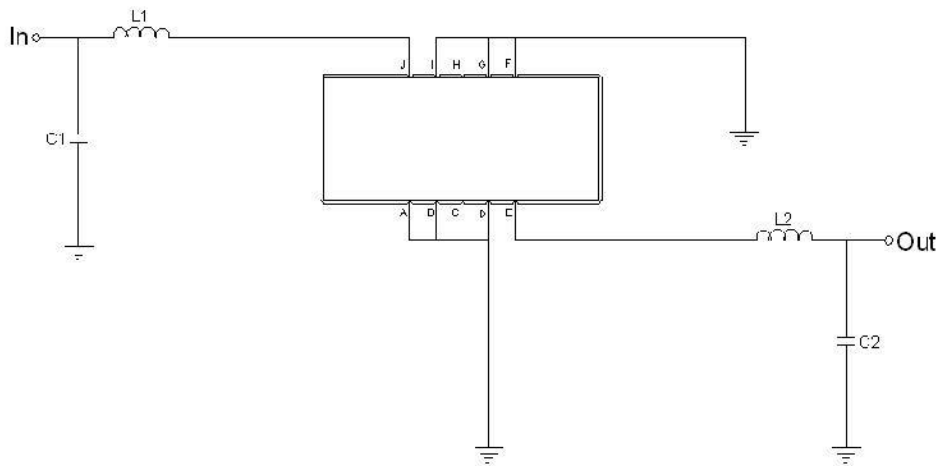


Outline Drawing:



Pin Description	
Ground	A B C D F G H I
Input	J
Output	E

Testing Environment:



Test Fixture & Values	
Input	L1=39nH, C1=48pF
Output	L2=39nH, C2=48pF
Source/Load Impedance	50 Ω



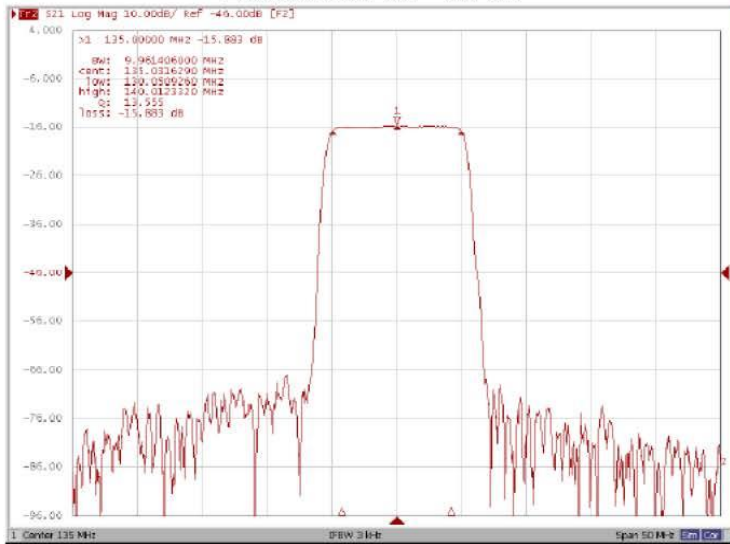
135 MHz IF Saw Filter

Part Number: AM135S702

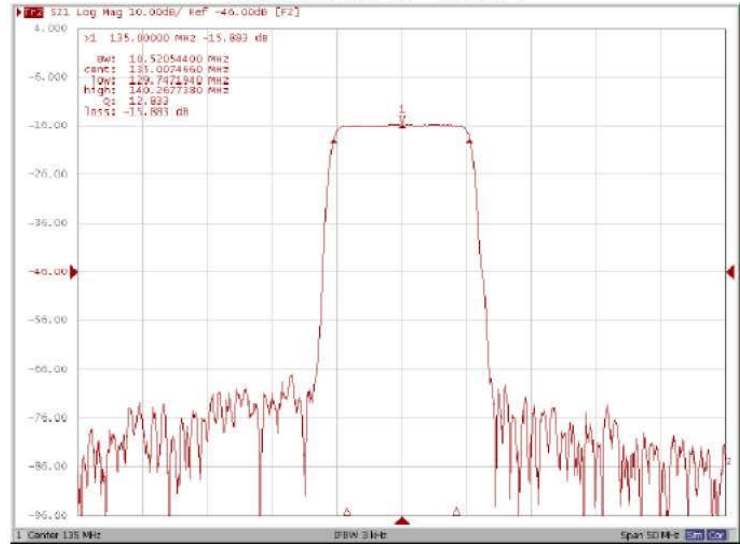


Frequency Response:

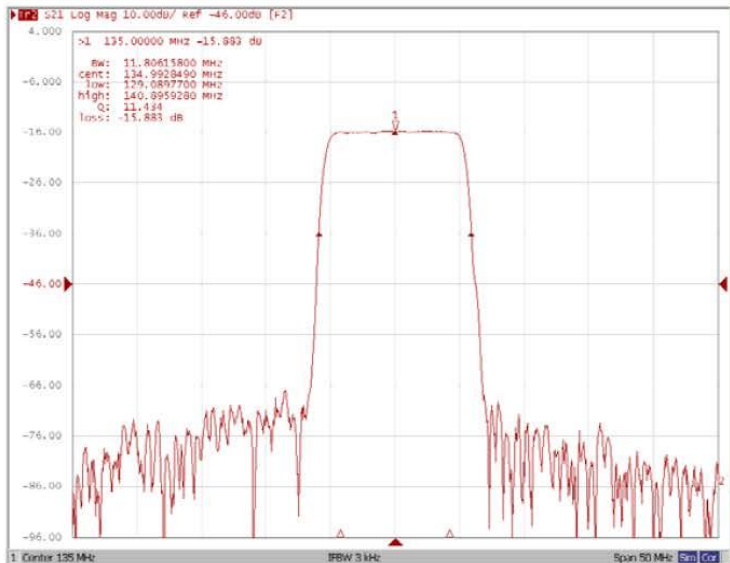
Bandwidth at -1.0 dB



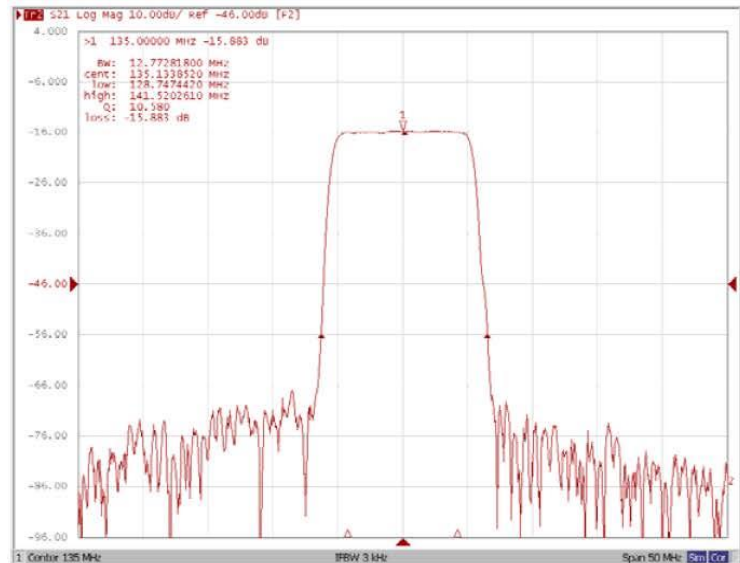
Bandwidth at -3.0 dB



Bandwidth at -20.0 dB



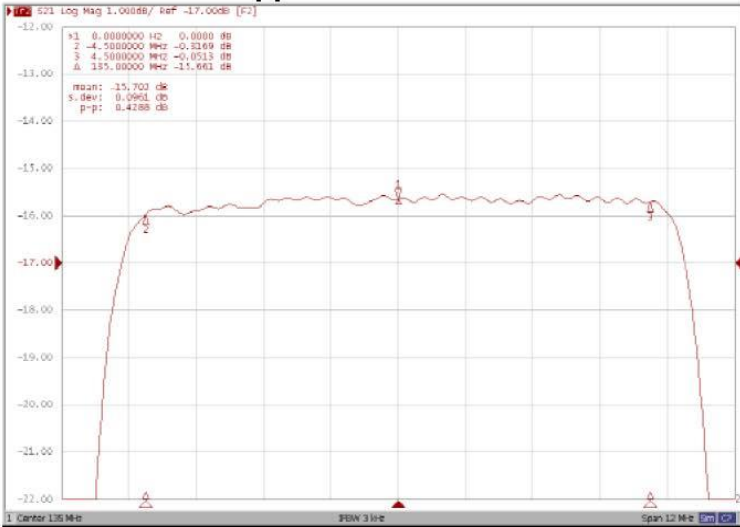
Bandwidth at -40.0 dB



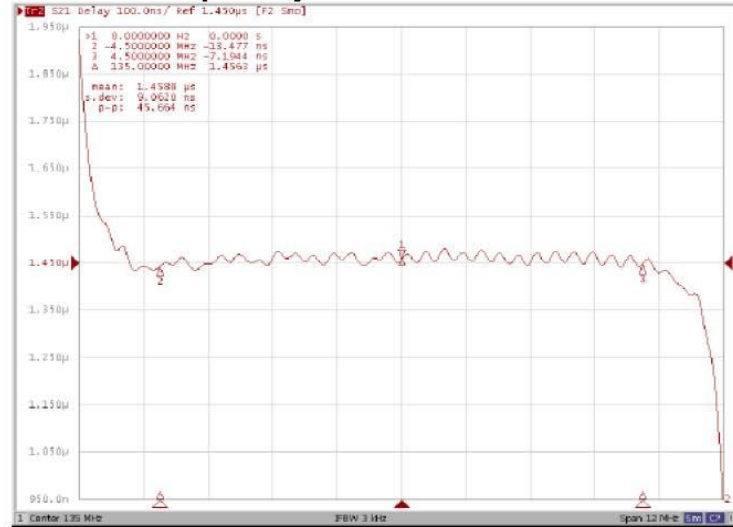


Frequency Response:

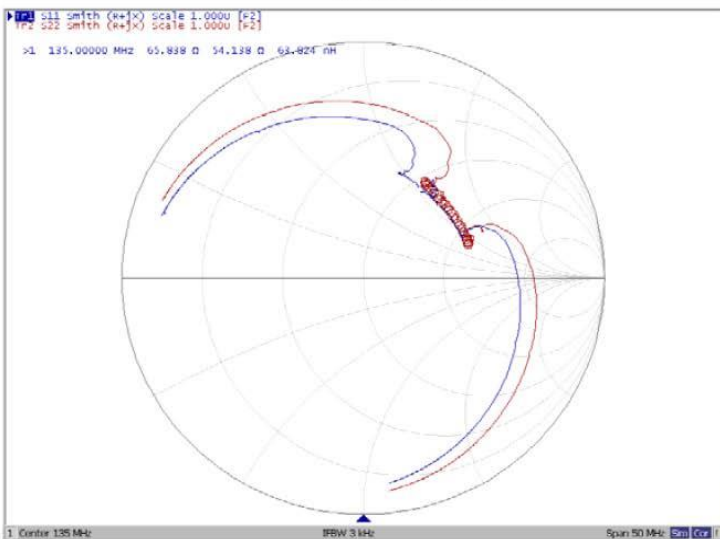
Ripple Variation Fo±4.5MHz



Group Delay Variation Fo±4.5MHz



Smith Chart



VSWR

