



Electrical specifications

- Center Frequency:** 139.85 Mhz min (140 MHz typ)
- Insertion Loss:** 10 dB max (7.20 dB typ.)
- 1dB Bandwidth:** 0.40 MHz min (0.48 dB typ.)
- 3dB Bandwidth:** 0.73 MHz typ.
- 4dB Bandwidth:** 1.70 MHz max (1.47 MHz typ.)
- Passband Ripple(Fc+0.1 MHz):** 1 dB max (0.35 dB typ.)
- Group Delay Variation(Fc+0.1 MHz):** 250 nsec max (100 nsec typ.)
- Ultimate Attenuation:** 42 dB min (50 dB typ)

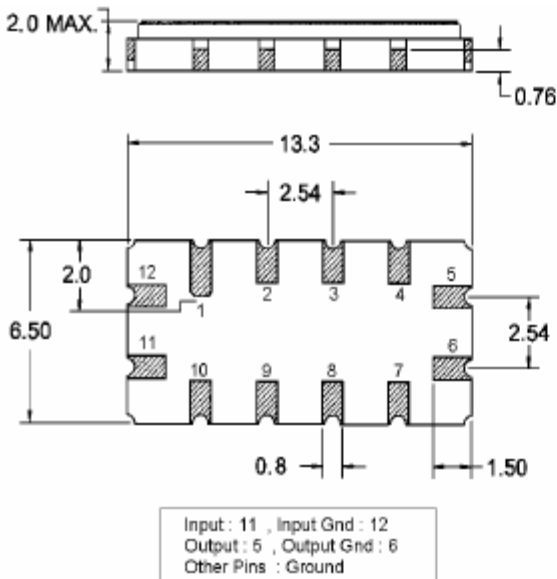
Mechanical

- Mounting Method:** SMT
- Dimensions:** 13.3 x 6.50 x 2.0 mm

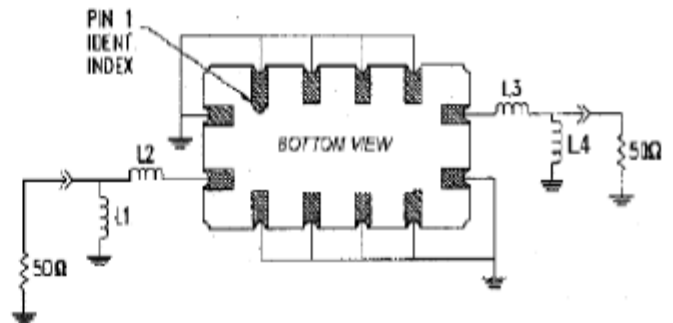
Environmental

- Operating Temperature:** -40°C to +85°C
- Storage Temperature:** -55°C to +100°C
- Temperature Coefficient:** -0.03 ppm/°C

Outline Drawing:



Matching Configuration



$L1 = L2 = 68 \text{ nH}$, $C1 = 91 \text{ pF}$, $C2 = 110 \text{ pF}$
Source / Load Impedance = 50Ω
Ambient Temperature = 25°C



140 MHz Saw Bandpass Filter

Part Number: AM140S1062



Plots:

