



140 MHz Saw Filter
Part Number: AM140S370



Parameters Description	Unit	Minimum	Typical	Maximum
Center Frequency (Fo)	MHz	139.88	14.00	140.12
Insertion Loss at Fo	dB	-	24.5	26.0
Passband Ripple Variation	dB	-	0.45	0.80
Group Delay Variation	nsec	-	50	120
Absolute Delay at Fo	usec	-	1.85	-
Bandwidth at 3.0 dB	MHz	2.30	2.55	-
Bandwidth at 40.0 dB	MHz	-	3.90	4.20
Ultimate Attenuation	dB	45	50	-
Substrate Material	Quartz			

Parameters Description	Unit	Minimum	Typical	Maximum
Operation Temperature Range	°C	-30	-	+80
Storage Temperature Range	°C	-40	-	+85
Maximum DC Voltage	V	-	-	10
Maximum Input Power	dBm	-	-	10
Source Impedance (Single Ended) ₁	Ω	-	50	-
Load Impedance (Single Ended) ₁	Ω	-	50	-

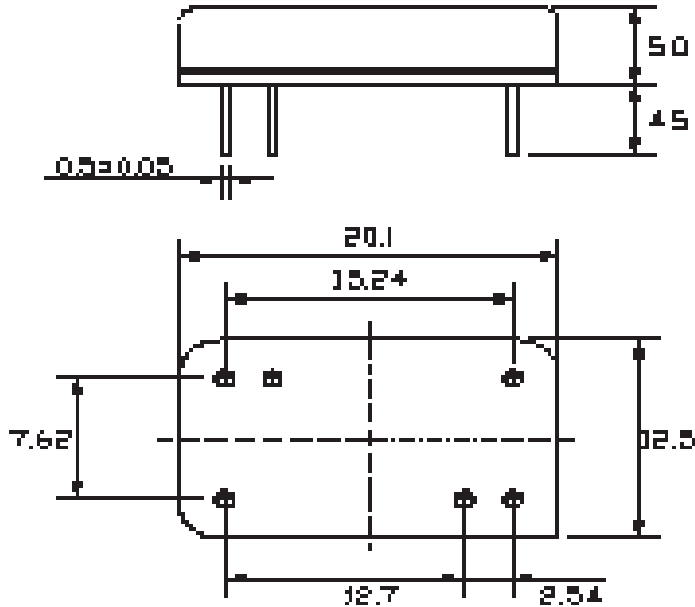


140 MHz Saw Filter

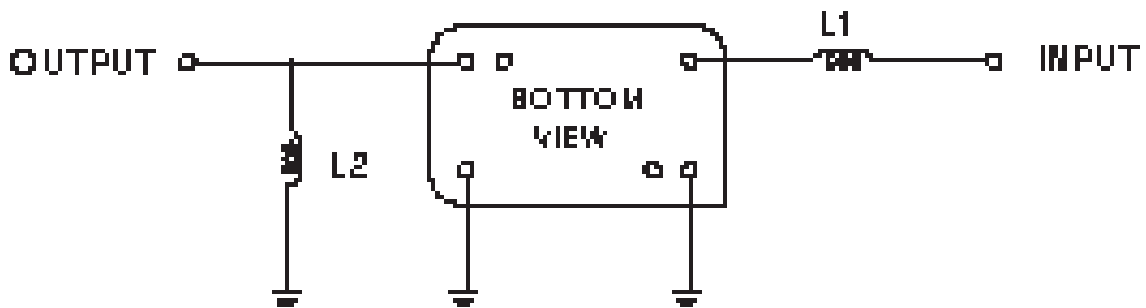
Part Number: AM140S370



Outline Drawing:



Testing Environment:



L1 = 22 nH L2 = 47 nH

Bottom View

Source/Load Impedance = 50 Ω

Ambient Temperature = 25°C



140 MHz Saw Filter

Part Number: AM140S370



Frequency Response:

