



140 MHz IF Saw Filter 15 MHz Bandwidth

Part Number: AM140S612

ANATECH ELECTRONICS INC
RF & Microwave Filters & Products



Parameters Description	Unit	Minimum	Typical	Maximum
Center Frequency (Fo)	MHz	-	140.0	-
Insertion Loss at Fo	dB	-	18.0	21.0
Amplitude Ripple at Fo ± 6.875 MHz	dB _{p-p}	-	0.60	1.00
Group Delay Variation at Fo ± 6.875 MHz	nsec	-	50	100
Absolute Delay at Fo	usec	-	0.88	-
Bandwidth at -1.0 dB	MHz	-	14.8	-
Bandwidth at -3.0 dB	MHz	15.0	15.5	-
Bandwidth at -40.0 dB	MHz	-	18.5	19.0
Relative Attenuation:				
Lower Sidelobe	dB	42	48	-
Upper Sidelobe	dB	40	45	-
Fc – 8.5 MHz	dB	-	15	-
Fc + 8.5 MHz	dB	-	9	-
Temperature Coefficient	ppm/°C	-	-23	-

Parameters Description	Unit	Minimum	Typical	Maximum
Operation Temperature Range	°C	-30	-	+80
Storage Temperature Range	°C	-40	-	+85
Maximum DC Voltage	V	-	-	10
Maximum Input Power	dBm	-	-	10
Source Impedance (Single Ended) ₁	Ω	-	50	-
Load Impedance (Single Ended) ₁	Ω	-	50	-
Package Size and Type	13.3 x 6.5 x 1.8 mm		V	



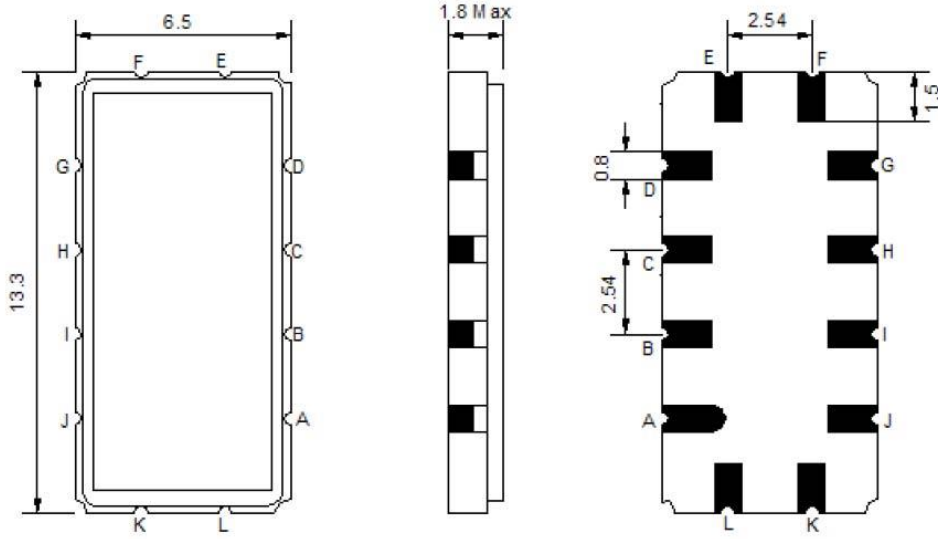
140 MHz IF Saw Filter 15 MHz Bandwidth

Part Number: AM140S612



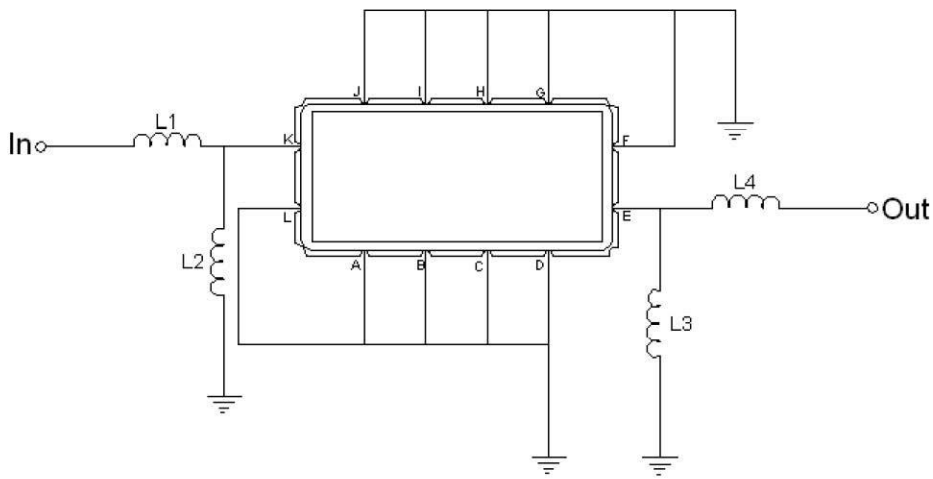
ANATECH ELECTRONICS INC
RF & Microwave Filters & Products

Outline Drawing:



Pin Description	
Ground	A B C D F G H I J L
Input	K
Output	E

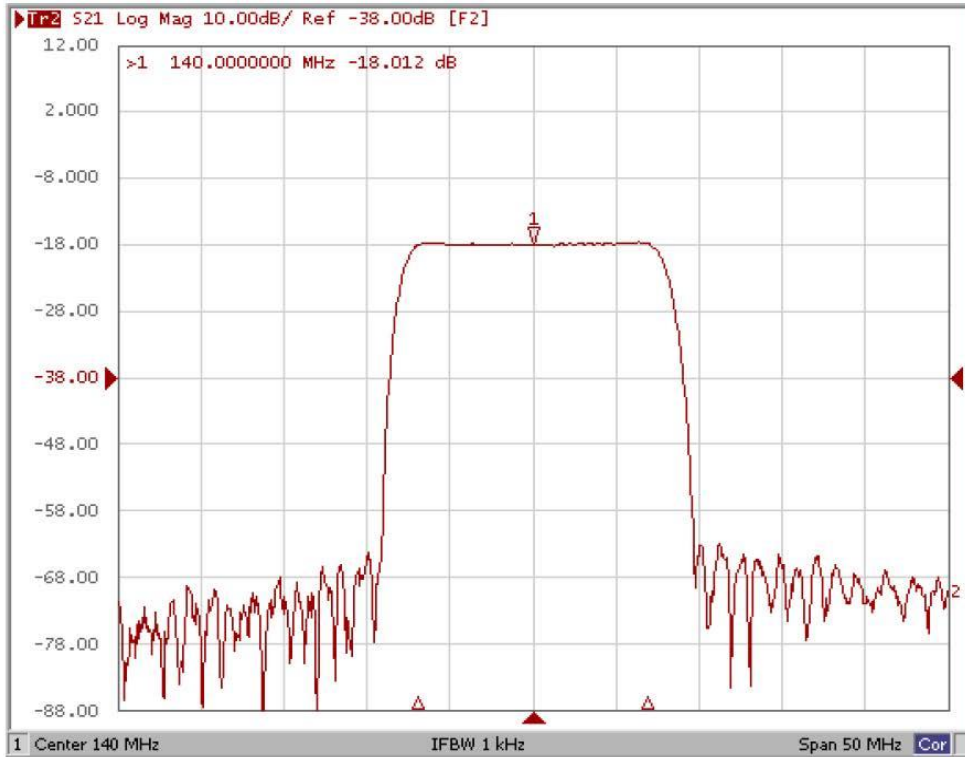
Testing Environment:



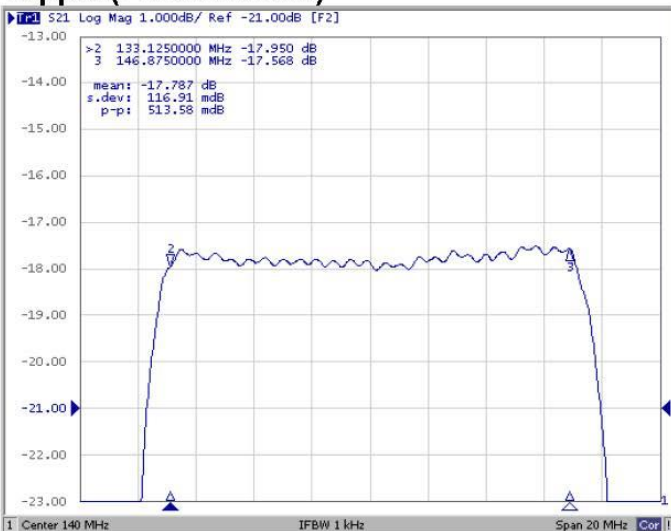
Test Fixture & Values	
Input	L1=68 nH , L2=47 nH
Output	L3=82 nH , L4=47 nH
Source/Load Impedance	50 Ω



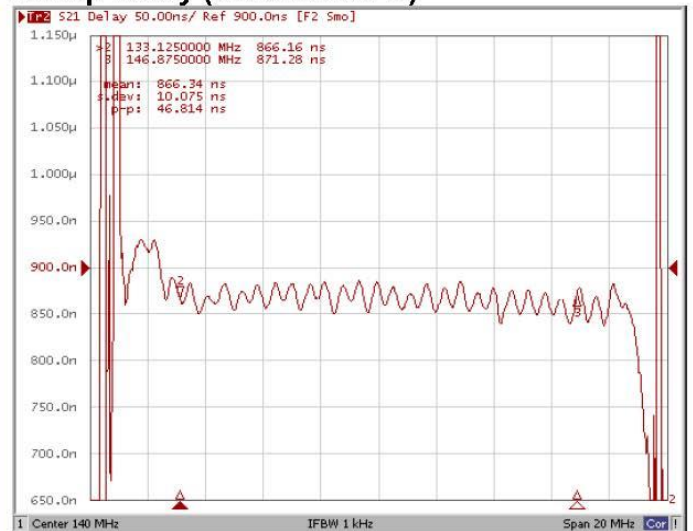
Frequency Response:



Ripple (Fo±6.875MHz)



Group Delay (Fo±6.875MHz)





Frequency Response:

