



ANATECH ELECTRONICS INC
RF & Microwave Filters & Products

140 MHz IF Saw Filter

Part Number: AM140S704

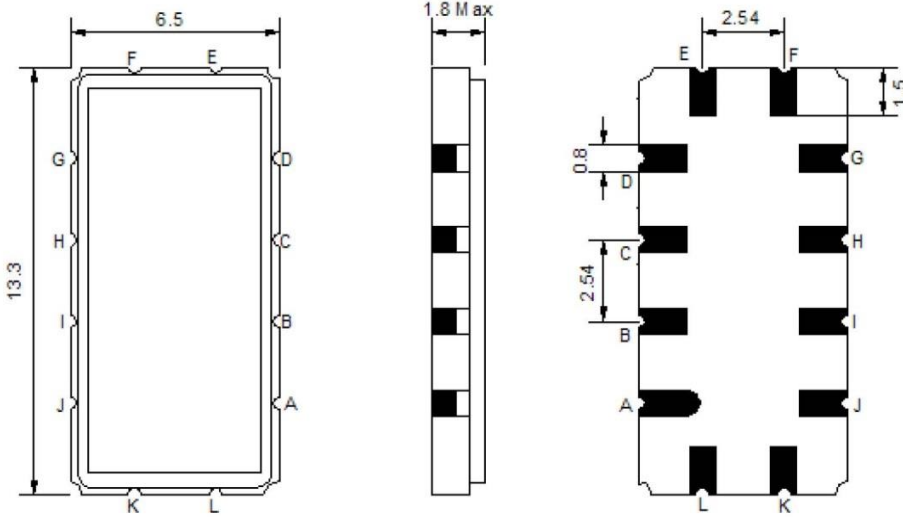


Parameters Description	Unit	Minimum	Typical	Maximum
Center Frequency (Fo)	MHz	139.80	140.00	140.20
Insertion Loss at Fo	dB	-	11.0	12.50
Passband Ripple Variation	dB	-	0.60	1.00
Group Delay Variation	nsec	-	40	80
Absolute Delay at Fo	usec	-	0.88	-
Bandwidth at -1.0 dB	MHz	20.60	20.80	-
Bandwidth at -3.0 dB	MHz	-	21.75	-
Bandwidth at -35.0 dB	MHz	-	25.50	-
Bandwidth at -40.0 dB	MHz	-	26.50	26.60
Ultimate Rejection	dB	-	50	-
Temperature Coefficient	ppm/°C	-	-86	-

Parameters Description	Unit	Minimum	Typical	Maximum
Operation Temperature Range	°C		+25	-
Storage Temperature Range	°C	-40	-	+85
Maximum DC Voltage	V	-	-	10
Maximum Input Power	dBm	-	-	10
Source Impedance (Single Ended) ₁	Ω	-	50	-
Load Impedance (Single Ended) ₁	Ω	-	50	-
Package Size and Type		13.3 x 6.5 x 1.8 mm		V

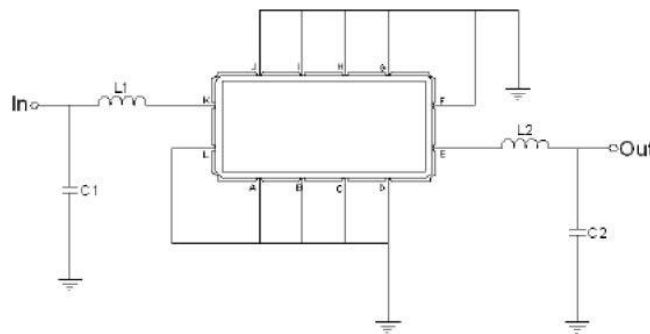


Outline Drawing:



Pin Description	
Ground	A B C D F G H I J L
Input	K
Output	E

Testing Environment:



Test Fixture & Values	
Input	L1 = 68 nH , C1 = 27 pF
Output	L2 = 68 nH , C2 = 27 pF
Source/Load Impedance	50 Ω

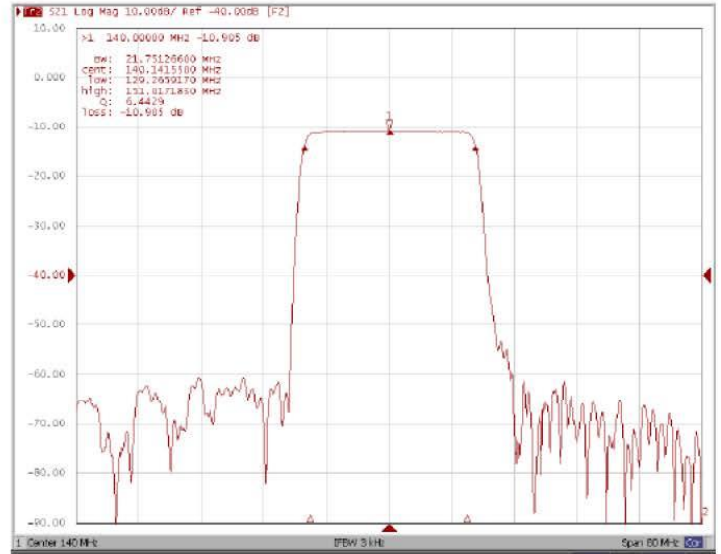


Frequency Response:

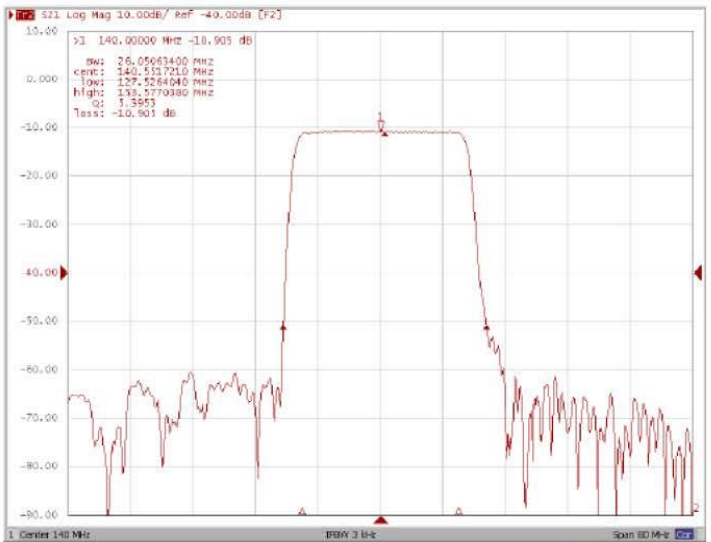
Bandwidth at -1.0 dB



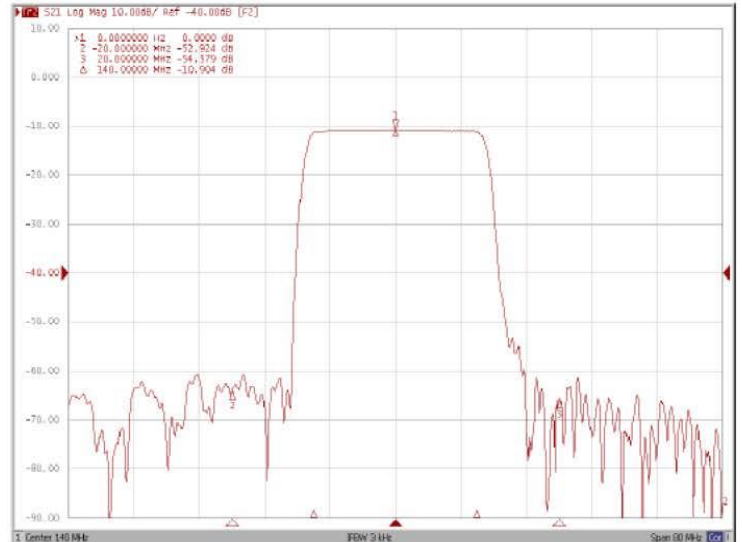
Bandwidth at -3.0 dB



Bandwidth at -40.0 dB



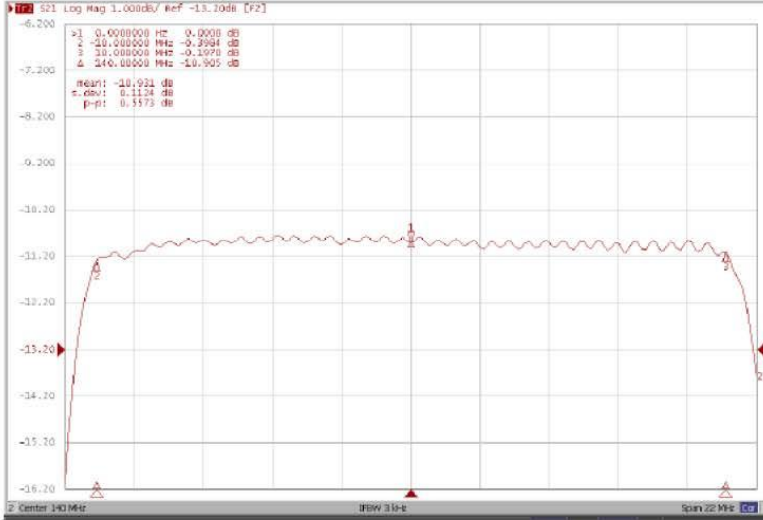
Attenuation Fo±20.0MHz



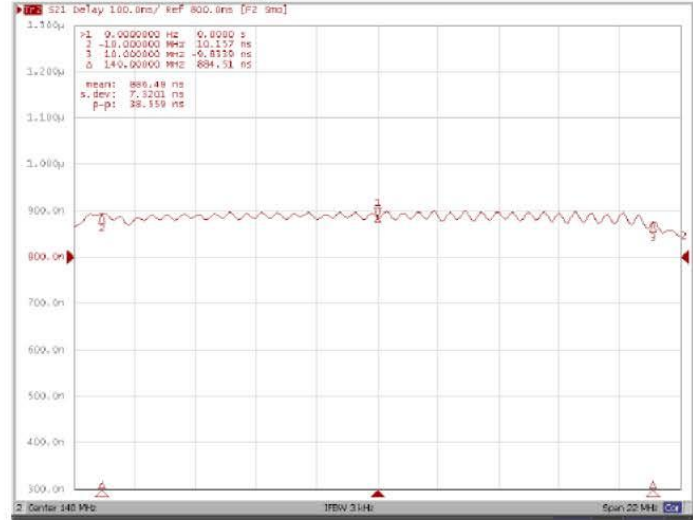


Frequency Response:

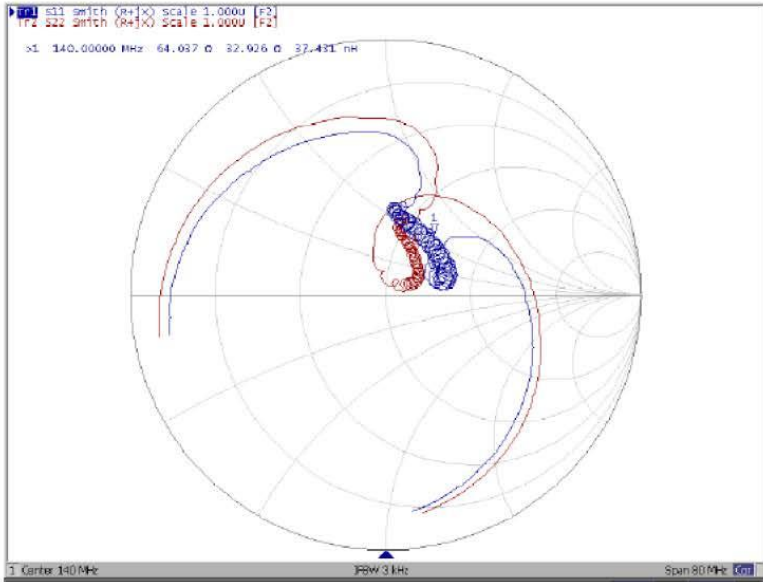
Ripple Variation Fo±10.0MHz



Group Delay Variation Fo±10.0MHz



Smith Chart



SWR

