



**ANATECH ELECTRONICS INC**  
RF & Microwave Filters & Products

## Low-Loss 140 MHz IF Saw Filter

**Part Number: AM140S706**

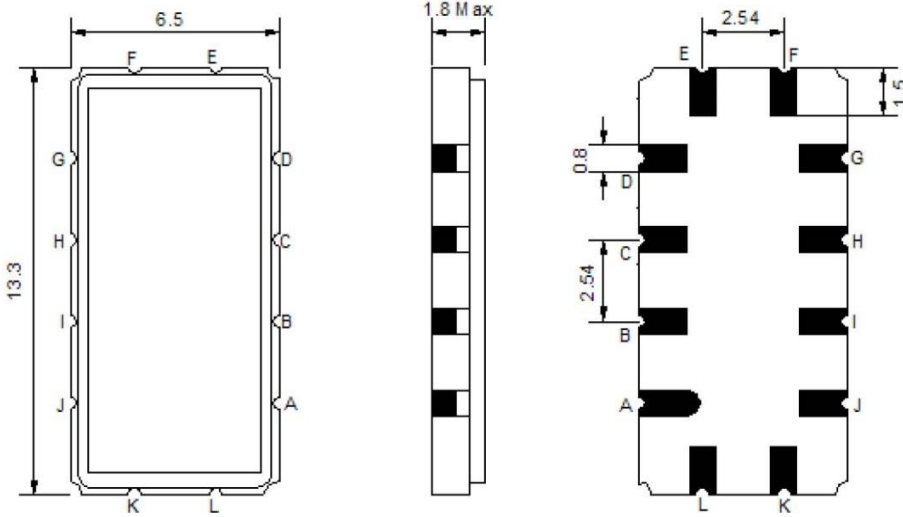


Parameters Description	Unit	Minimum	Typical	Maximum
Center Frequency (Fo)	MHz	139.85	140.00	140.15
Insertion Loss at Fo	dB	-	12.00	13.50
Amplitude Ripple Variation	dBp-p	-	0.40	1.00
Group Delay Variation	nsec	-	60	100
Absolute Delay at Fo	usec	-	0.96	-
Bandwidth at -1.0 dB	MHz	6.50	6.70	-
Bandwidth at -3.0 dB	MHz	7.40	7.60	-
Bandwidth at -40.0 dB	MHz	-	10.40	10.60
Bandwidth at -45.0 dB	MHz	-	10.80	11.00
Lower Sidelobe	dB	45	48	-
Upper Sidelobe	dB	45	50	-
Temperature Coefficient	ppm/°C	-	-20	-

Parameters Description	Unit	Minimum	Typical	Maximum
Operation Temperature Range	°C	-30	-	+80
Storage Temperature Range	°C	-40	-	+85
Maximum DC Voltage	V	-	-	10
Maximum Input Power	dBm	-	-	10
Source Impedance (Single Ended) <sub>1</sub>	Ω	-	50	-
Load Impedance (Single Ended) <sub>1</sub>	Ω	-	50	-
Package Size and Type		13.3 x 6.5 x 1.8 mm		V

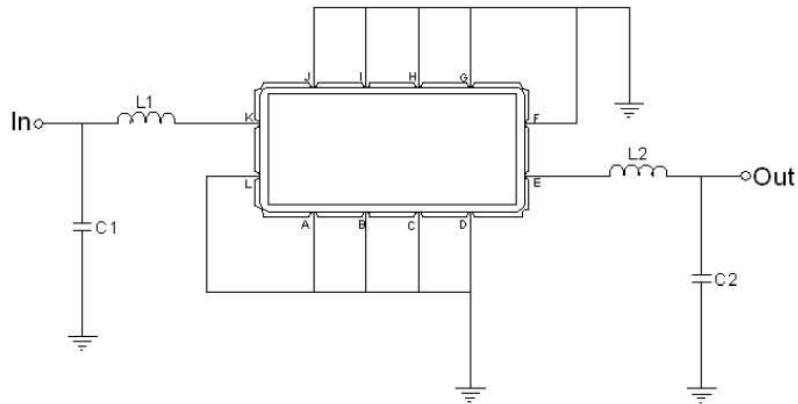


**Outline Drawing:**



Pin Description	
Ground	A B C D F G H I J L
Input	K
Output	E

**Testing Environment:**



Test Fixture & Values	
Input	L1=47nH Q >40 , C1=47pF
Output	L2=47nH Q.>40 , C2=47pF
Source/Load Impedance	50 Ω



### Frequency Response:

