



# Low-Loss 140 MHz IF Saw Filter

## Part Number: AM140S707

**ANATECH ELECTRONICS INC**  
RF & Microwave Filters & Products



Parameters Description	Unit	Minimum	Typical	Maximum
Center Frequency (Fo)	MHz	139.6	140.00	140.4
Insertion Loss at Fo	dB	-	8.0	10.0
Amplitude Ripple within Fo ± 3.2 MHz	dBp-p	-	0.60	1.00
Group Delay Variation within Fo ± 3.2 MHz	nsec	-	60	100
Absolute Delay at Fo	usec	-	1.00	-
Bandwidth at -1.0 dB	MHz	7.6	7.9	-
Bandwidth at -3.0 dB	MHz	8.5	8.8	-
Bandwidth at -40.0 dB	MHz	-	13.0	13.8
<b>Relative Attenuation:</b>				
10.0 ~ 133.0 MHz	dB	45	-	-
147.0 ~ 280.0 MHz	dB	45	-	-

Parameters Description	Unit	Minimum	Typical	Maximum
Operation Temperature Range	°C	-30	-	+80
Storage Temperature Range	°C	-40	-	+85
Maximum DC Voltage	V	-	-	10
Maximum Input Power	dBm	-	-	10
Source Impedance (Single Ended) <sub>1</sub>	Ω	-	50	-
Load Impedance (Single Ended) <sub>1</sub>	Ω	-	50	-
Package Size and Type	13.3 x 6.5 x 1.8 mm		V	



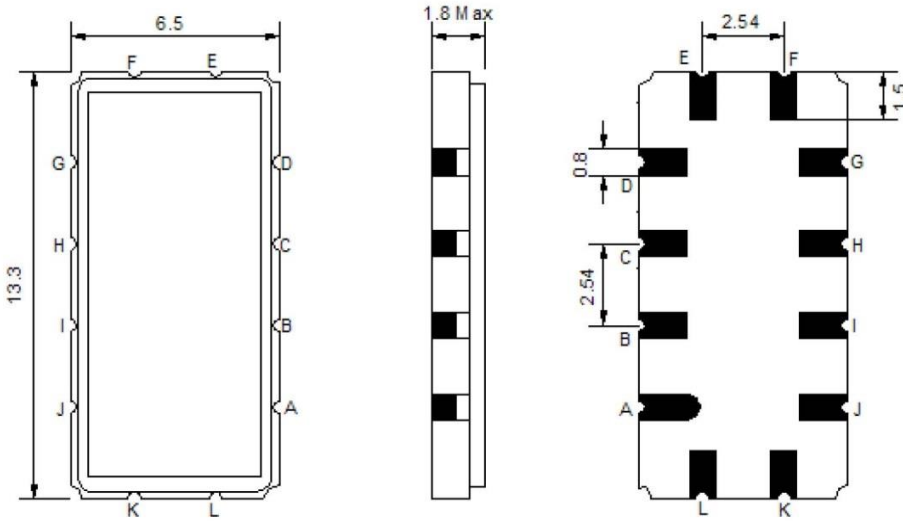
# Low-Loss 140 MHz IF Saw Filter

Part Number: AM140S707



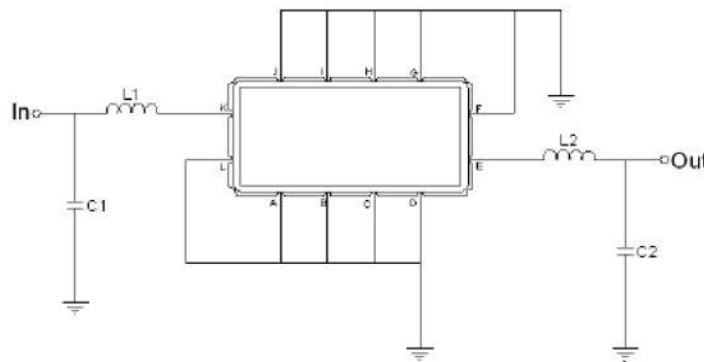
**ANATECH ELECTRONICS INC**  
RF & Microwave Filters & Products

## Outline Drawing:



Pin Description	
Ground	A B C D F G H I J L
Input	K
Output	E

## Testing Environment:



Test Fixture & Values		
Input	L1=TBD ,	C1=TB D
Output	L2=TBD ,	C2=TB D
Source/Load Impedance	50 Ω	



### Frequency Response:

