



**ANATECH ELECTRONICS INC**  
RF & Microwave Filters & Products

## Low-Loss 140 MHz IF Saw Filter

**Part Number: AM140S708**

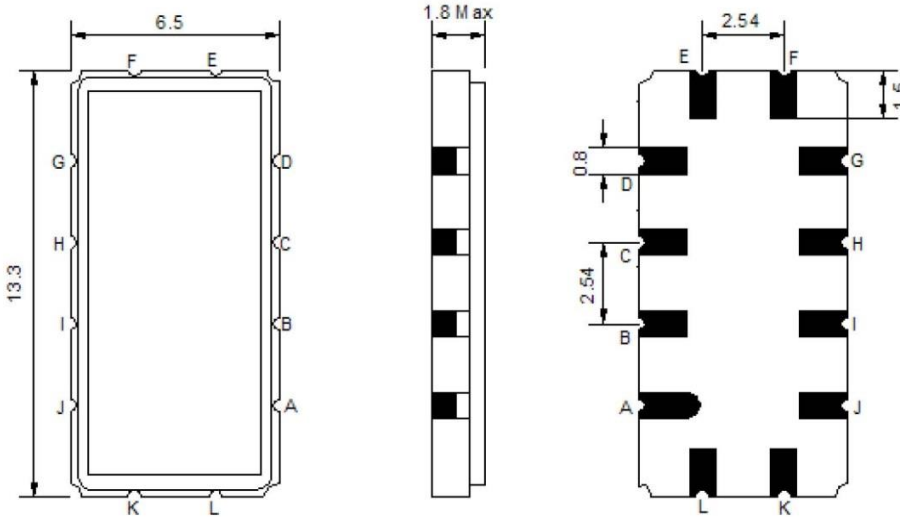


Parameters Description	Unit	Minimum	Typical	Maximum
Center Frequency (Fo)	MHz	139.85	140.00	140.15
Insertion Loss at Fo	dB	-	13.60	15.00
Amplitude Ripple Variation	dBp-p	-	0.40	1.00
Group Delay Variation	nsec	-	64	100
Absolute Delay at Fo	µsec	-	0.97	-
Temperature Coefficient	ppm/°C	-	-20	-
Bandwidth at -1.0 dB	MHz	9.1	9.3	-
Bandwidth at -3.0 dB	MHz	9.9	10.1	-
Bandwidth at -40.0 dB	MHz	-	12.9	13.1
Bandwidth at -45.0 dB	MHz	-	13.2	14.0
Lower Sidelobe	dB	45	48	-
Upper Sidelobe	dB	41	45	-

Parameters Description	Unit	Minimum	Typical	Maximum
Operation Temperature Range	°C	-30	-	+80
Storage Temperature Range	°C	-40	-	+85
Maximum DC Voltage	V	-	-	10
Maximum Input Power	dBm	-	-	10
Source Impedance (Single Ended) <sub>1</sub>	Ω	-	50	-
Load Impedance (Single Ended) <sub>1</sub>	Ω	-	50	-
Package Size and Type		13.3 x 6.5 x 1.8 mm		V

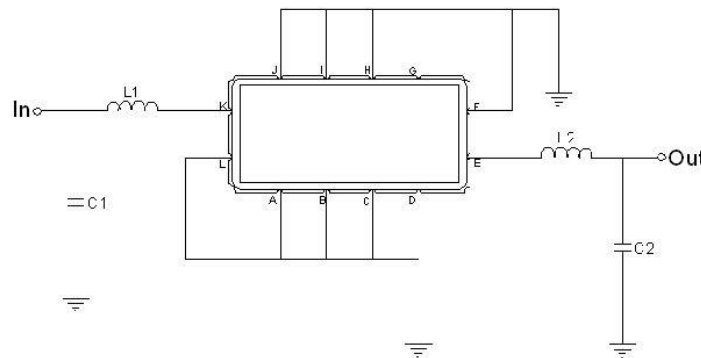


**Outline Drawing:**



Pin Description	
Ground	A B C D F G H I J L
Input	K
Output	E

**Testing Environment:**



Test Fixture & Values	
Input	L1=47nH Q >40 ,C1=51pF
Output	L2=47nH Q.>40 ,C2=51pF
Source/Load Impedance	50 Ω



### Frequency Response:

