



ANATECH ELECTRONICS INC
RF & Microwave Filters & Products

Low-Loss 140 MHz IF Saw Filter

Part Number: AM140S709

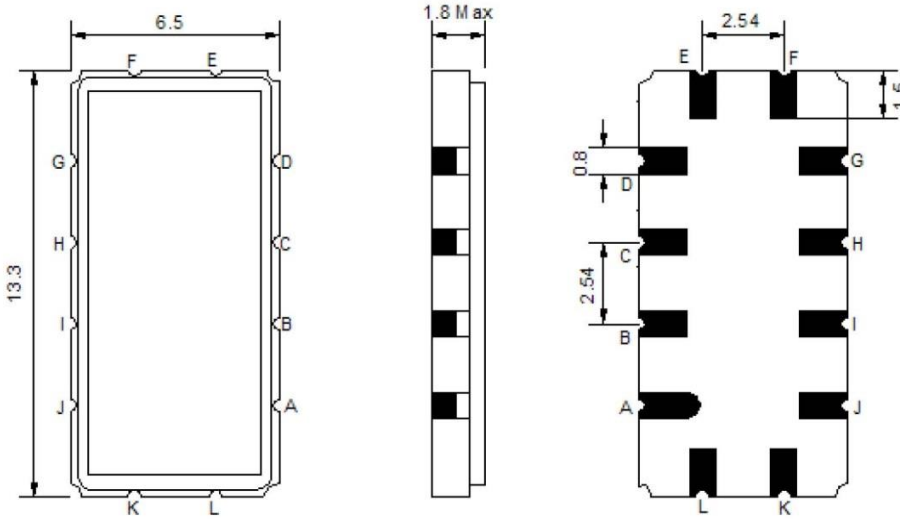


Parameters Description	Unit	Minimum	Typical	Maximum
Center Frequency (Fo)	MHz	139.60	140.00	140.40
Insertion Loss at Fo	dB	-	10.50	11.5
Amplitude Ripple within Fo ± 3.6 MHz	dBp-p	-	0.70	1.00
Group Delay Variation within Fo ± 3.6 MHz	nsec	-	100	150
Absolute Delay at Fo	µsec	-	1.03	-
Temperature Coefficient	ppm/°C	-	-86	-
Bandwidth at -1.5 dB	MHz	8.9	9.3	-
Bandwidth at -3.0 dB	MHz	9.4	9.9	-
Bandwidth at -35.0 dB	MHz	-	13.5	14.5
Relative Attenuation:				
10.0 ~ 132.0 MHz	dB	40	48	-
149.0 ~ 260.0 MHz	dB	40	45	-

Parameters Description	Unit	Minimum	Typical	Maximum
Operation Temperature Range	°C	-30	-	+80
Storage Temperature Range	°C	-40	-	+85
Maximum DC Voltage	V	-	-	10
Maximum Input Power	dBm	-	-	10
Source Impedance (Single Ended) ₁	Ω	-	50	-
Load Impedance (Single Ended) ₁	Ω	-	50	-
Package Size and Type		13.3 x 6.5 x 1.8 mm		V

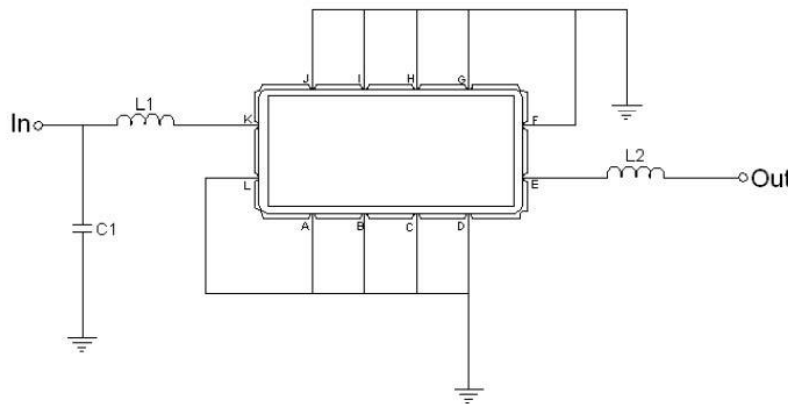


Outline Drawing:



Pin Description	
Ground	A B C D F G H I J L
Input	K
Output	E

Testing Environment:



Test Fixture & Values	
Input	L1=82nH Q >40, C1=30pF
Output	L2=56nH Q >40
Source/Load Impedance	50 Ω



Frequency Response:

