



140 MHz IF Saw Filter

Part Number: AM140S711

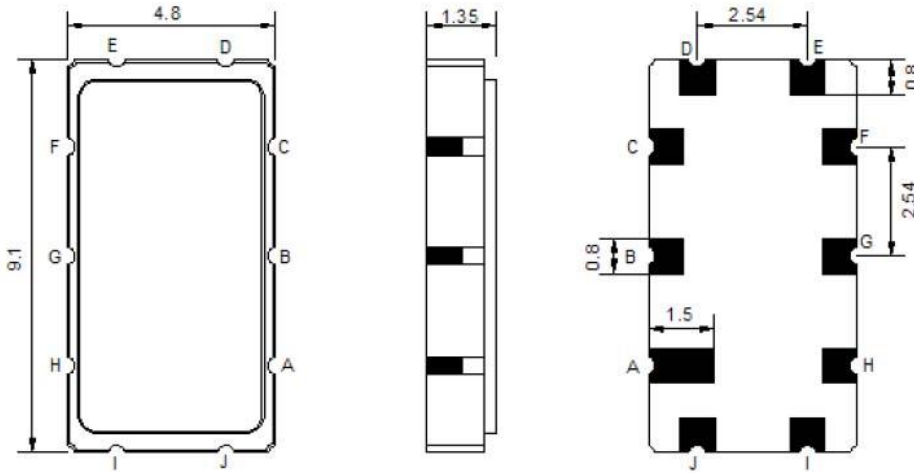


| Parameters Description | Unit | Minimum | Typical | Maximum |
|--|--------|---------|---------|---------|
| Center Frequency (Fo) | MHz | - | 140.00 | - |
| Insertion Loss at Fo | dB | - | 8.50 | 11.00 |
| Amplitude Ripple Variation | dBp-p | - | 0.60 | 1.00 |
| Group Delay Variation | nsec | - | 55 | 100 |
| Absolute Delay at Fo | µsec | - | 0.88 | - |
| Temperature Coefficient | ppm/°C | - | -86 | - |
| Bandwidth at -1.0 dB | MHz | 17.20 | 18.20 | - |
| Bandwidth at -3.0 dB | MHz | 18.00 | 19.20 | - |
| Bandwidth at -35.0 dB | MHz | - | 22.80 | 25.00 |
| Relative Attenuation: (Reference 140 MHz) | | | | |
| 100.0 ~ 124.0 MHz | dB | 40 | 46 | - |
| 156.0 ~ 180.0 MHz | dB | 40 | 44 | - |

| Parameters Description | Unit | Minimum | Typical | Maximum |
|--|----------------------|---------|---------|---------|
| Operation Temperature Range | °C | -30 | - | +80 |
| Storage Temperature Range | °C | -40 | - | +85 |
| Maximum DC Voltage | V | - | - | 10 |
| Maximum Input Power | dBm | - | - | 10 |
| Source Impedance (Single Ended) ₁ | Ω | - | 50 | - |
| Load Impedance (Single Ended) ₁ | Ω | - | 50 | - |
| Package Size and Type | 9.1 x 4.8 x 1.5 mm T | | | |

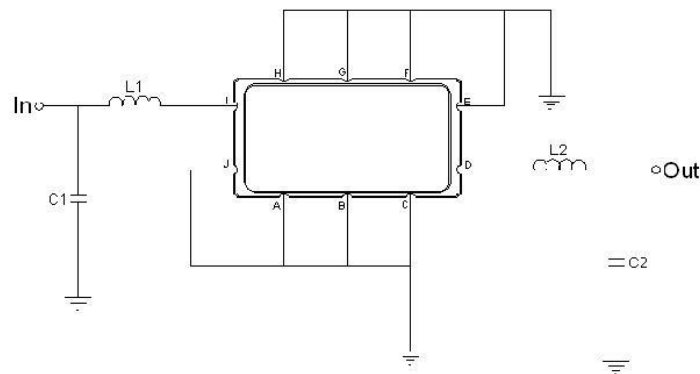


Outline Drawing:



| Pin Description | |
|-----------------|-----------------|
| Ground | A B C E F G H J |
| Input | I |
| Output | D |

Testing Environment:



| Test Fixture & Values | |
|-----------------------|-------------------------|
| Input | L1 = 39 nH , C1 = 43 pF |
| Output | L2 = 39 nH , C2 = 43 pF |
| Source/Load Impedance | 50 Ω |



ANATECH ELECTRONICS INC
RF & Microwave Filters & Products

140 MHz IF Saw Filter

Part Number: AM140S711



Frequency Response:

