



ANATECH ELECTRONICS INC
RF & Microwave Filters & Products

140 MHz Saw Filter

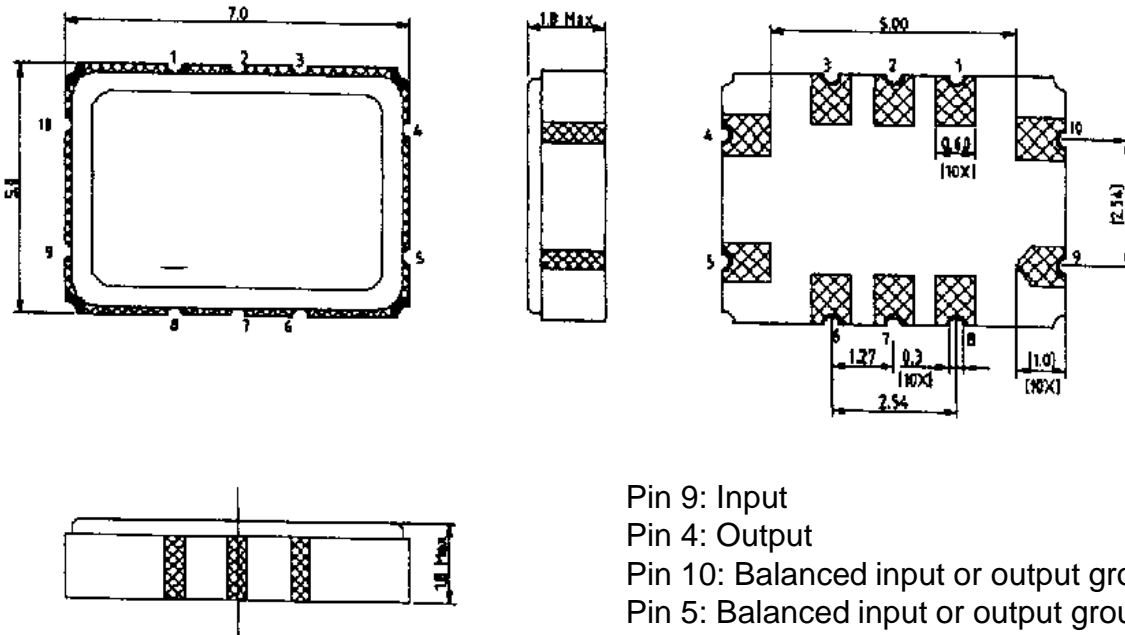
Part Number: AM140S807



Parameters Description	Unit	Minimum	Typical	Maximum
Center Frequency (Fo)	MHz	-	140.00	-
Minimum Insertion Loss (Fo ± 20 kHz)	dB	-	3.00	6.00
Passband Ripple (Fo ± 20 kHz)	dB	-	0.10	3.00
Group Delay Variation (Fo ± 20 kHz)	nsec	-	1.00	12.00
3 dB Bandwidth (Note: considering -20 kHz frequency shift from -40°C to +85°C)	MHz	40.00	100.00	-
50 dB Bandwidth	MHz	-	390.00	450.00
Temperature Coefficient	ppm/°C	-	-0.032	-
Maximum Ratings:				
Operation Temperature Range	°C	-40	-	+85
Storage Temperature Range	°C	-50	-	+95
Maximum DC Voltage	V	-	-	5
Maximum Input Power	dBm	-	-	10



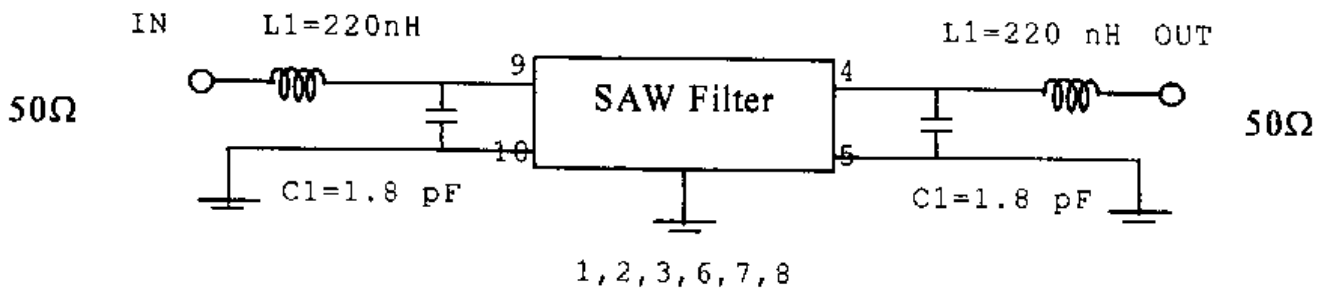
Outline Drawing:



- Pin 9: Input
- Pin 4: Output
- Pin 10: Balanced input or output ground
- Pin 5: Balanced input or output ground
- Pin 1, 2, 3, 6, 7, 8: To be ground

Unit: mm

Testing Environment:



50 Ohm Test Circuit (Single Ended)

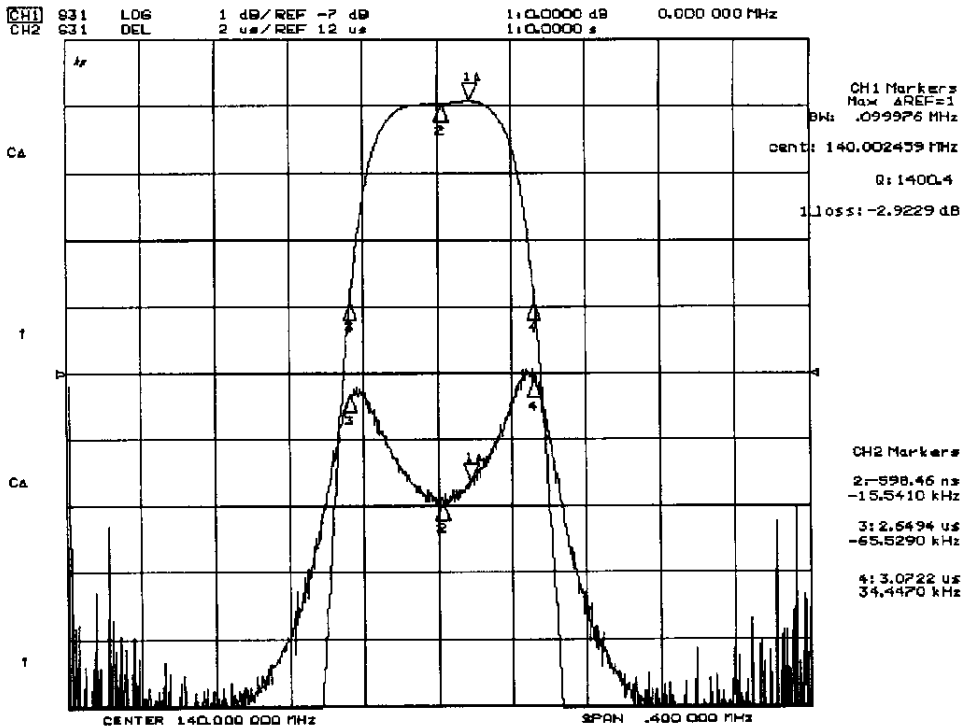
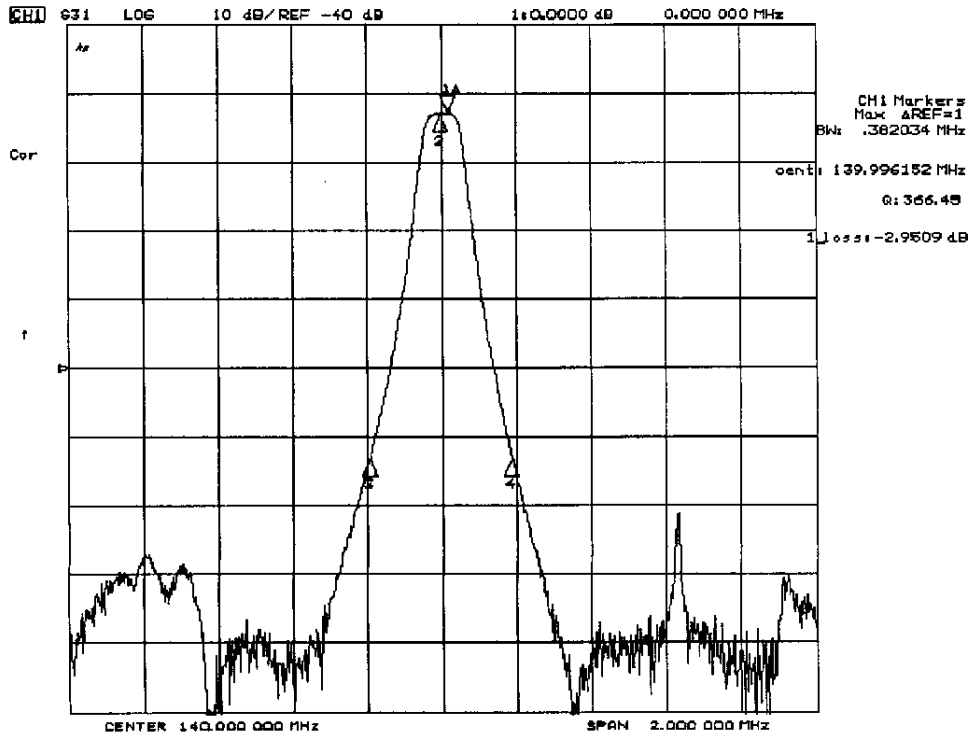


140 MHz Saw Filter

Part Number: AM140S807



Frequency Response:



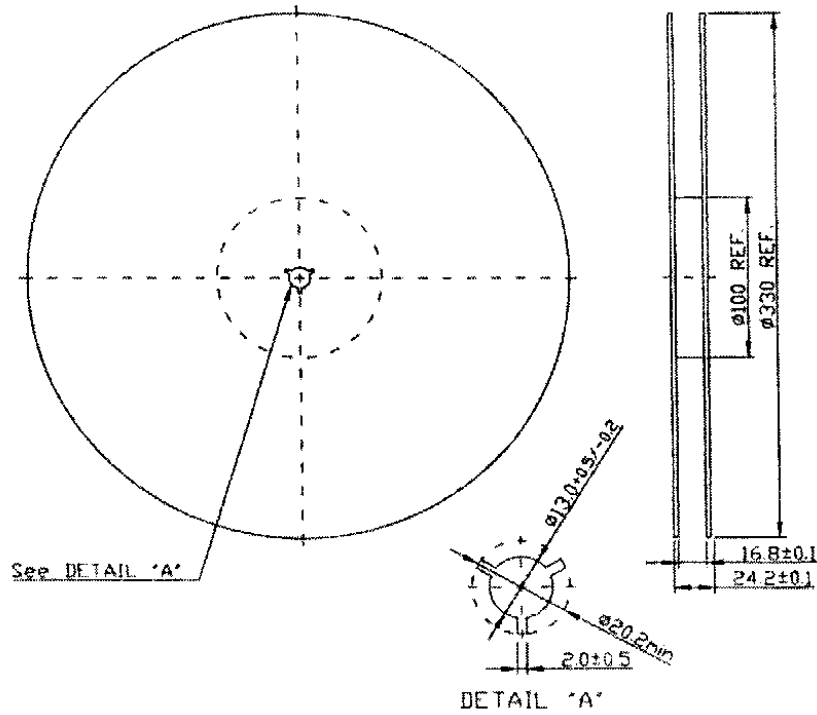


140 MHz Saw Filter

Part Number: AM140S807



Reel Dimensions:



Tape Dimensions:

