



140 MHz Saw Filter

Part Number: AM140S914



Parameters Description	Unit	Minimum	Typical	Maximum
Center Frequency (Fo)	MHz	139.80	140.00	140.20
Insertion Loss at Fo	dB	-	21.50	24.00
Passband Ripple	dB	-	0.60	1.00
Group Delay Variation	nsec	-	30	50
Absolute Delay at Fo	µsec	-	0.70	-
Temperature Coefficient	ppm/°C	-	-86	-
Bandwidth at 1.0 dB	MHz	-	74.00	-
Bandwidth at 3.0 dB	MHz	75.00	75.50	-
Bandwidth at 40.0 dB	MHz	-	82.50	83.00
Relative Attenuation:				
DC ~ 87.5 MHz	dB	-	52	-
222.5 ~ 800.0 MHz	dB	-	40	-
Substrate Material	YZ-LiNbO ₃			

Parameters Description	Unit	Minimum	Typical	Maximum
Operation Temperature Range	°C	-30	-	+80
Storage Temperature Range	°C	-40	-	+85
Maximum DC Voltage	V	-	-	10
Maximum Input Power	dBm	-	-	10
Source Impedance (Single Ended) ₁	Ω	-	50	-
Load Impedance (Single Ended) ₁	Ω	-	50	-

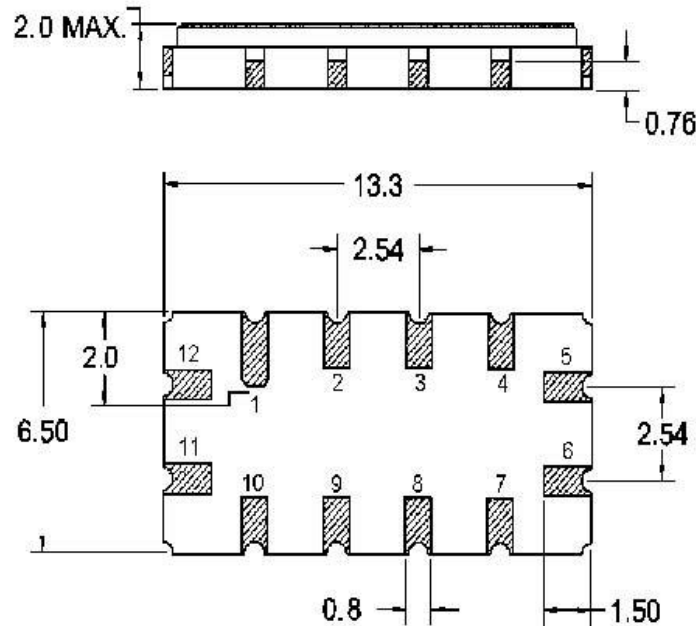


140 MHz Saw Filter

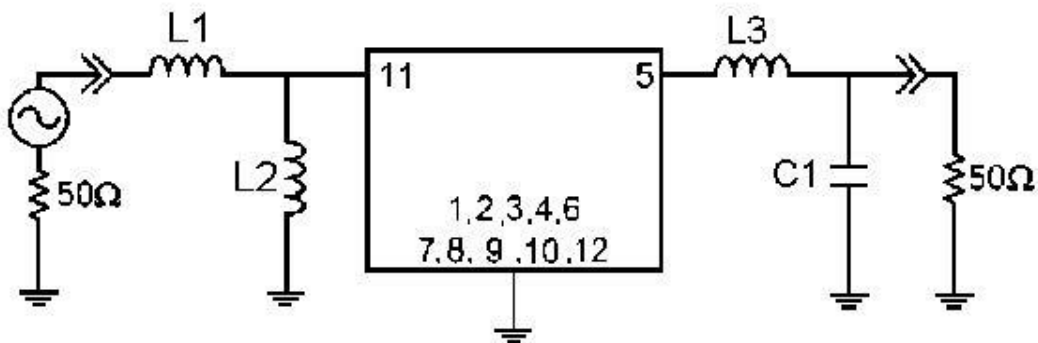
Part Number: AM140S914



Outline Drawing:



Testing Environment:



50Ω Single-ended

L1= 12nH, L2=39nH L3=33nH, C1=27pF
Source / Load Impedance = 50Ω
Ambient Temperature = 25°C

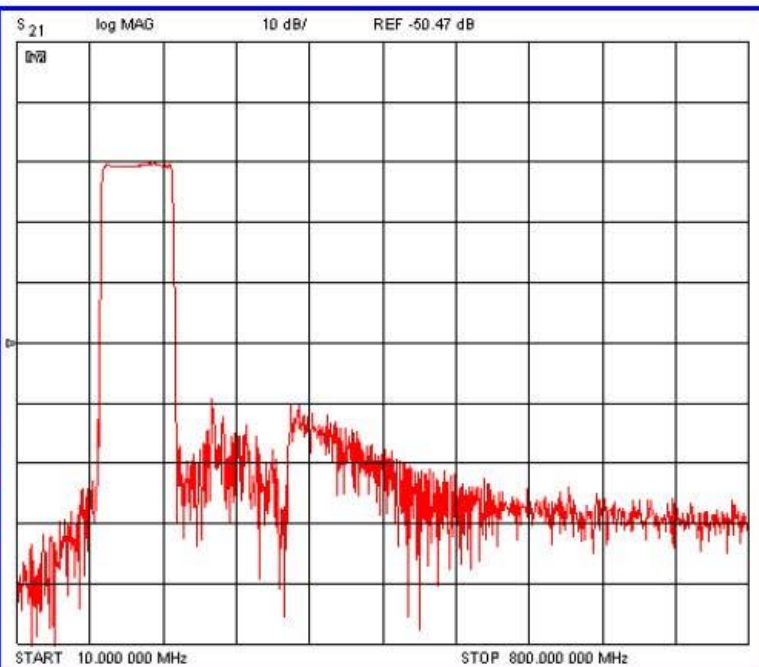
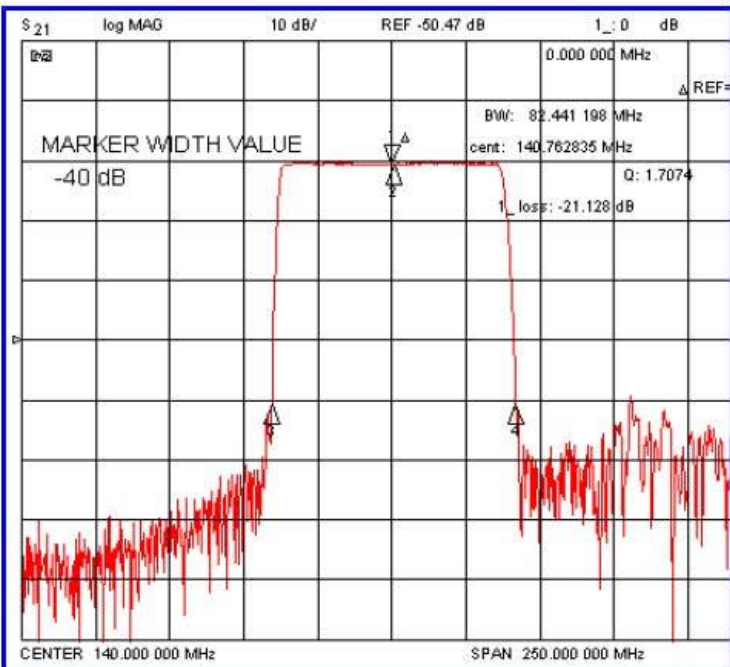
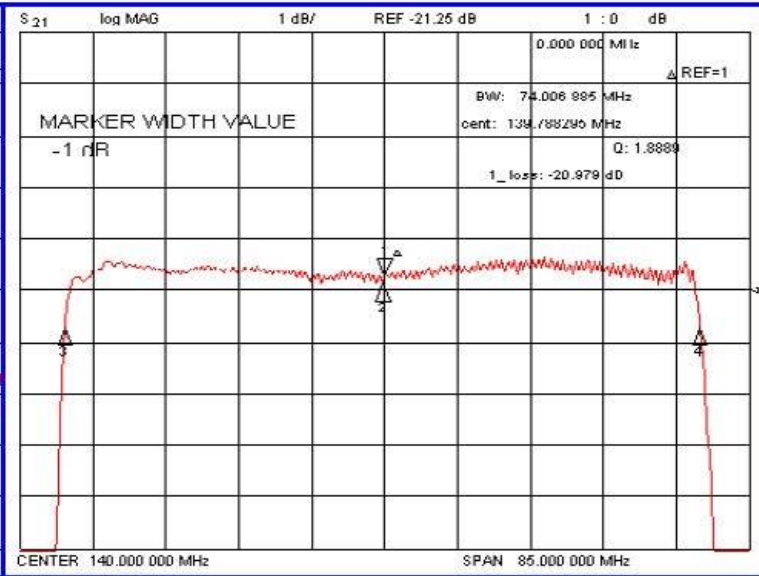
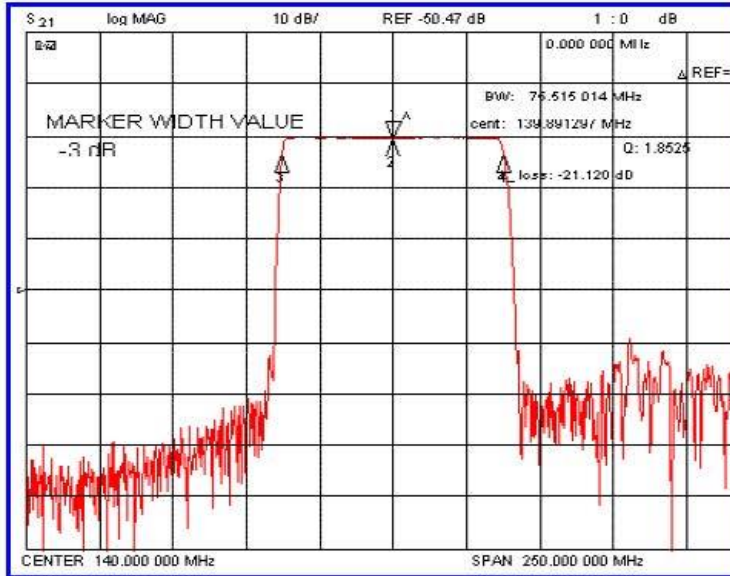


140 MHz Saw Filter

Part Number: AM140S914



Frequency Response:





Frequency Response:

