



ANATECH ELECTRONICS INC
RF & Microwave Filters & Products

142.5 MHz IF Saw Filter

Part Number: AM142S712

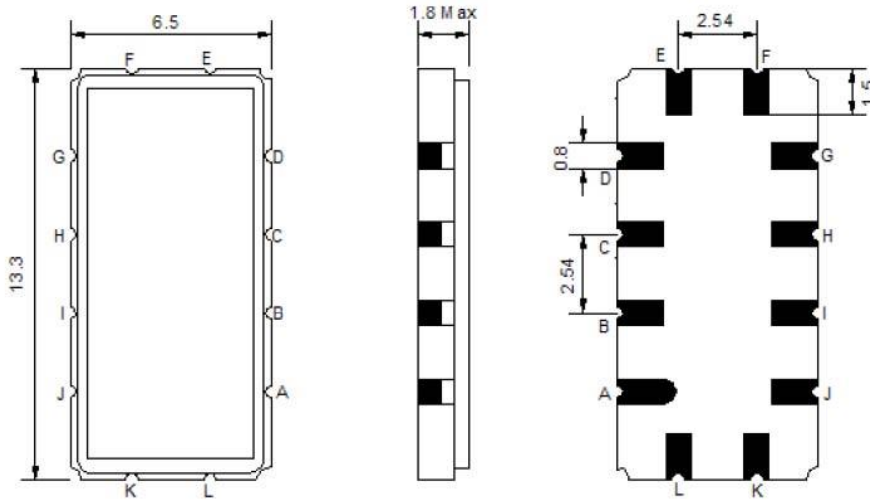


Parameters Description	Unit	Minimum	Typical	Maximum
Center Frequency (Fo)	MHz	142.35	142.50	142.62
Insertion Loss at Fo	dB	-	12.70	15.00
Amplitude Ripple within Fo ± 2.2 MHz	dBp-p	-	0.30	0.80
Group Delay Variation within Fo ± 2.2 MHz	nsec	-	40	80
Absolute Delay at Fo	µsec	-	1.17	-
Temperature Coefficient	ppm/°C	-	-18	-
Bandwidth at -1.0 dB	MHz	5.0	5.2	-
Bandwidth at -3.0 dB	MHz	-	5.8	-
Bandwidth at -35.0 dB	MHz	-	8.0	8.5
Lower Sidelobe	dB	45	48	-
Upper Sidelobe	dB	45	48	-

Parameters Description	Unit	Minimum	Typical	Maximum
Operation Temperature Range	°C	-30	-	+80
Storage Temperature Range	°C	-40	-	+85
Maximum DC Voltage	V	-	-	10
Maximum Input Power	dBm	-	-	10
Source Impedance (Single Ended) ₁	Ω	-	50	-
Load Impedance (Single Ended) ₁	Ω	-	50	-
Package Size and Type		13.3 x 6.5 x 1.8 mm		V

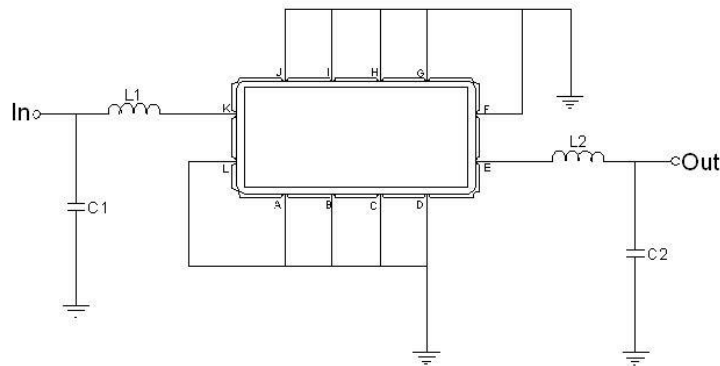


Outline Drawing:



Pin Description	
Ground	A B C D F G H I J L
Input	K
Output	E

Testing Environment:



Test Fixture & Values		
Input	L1=33nH ,	C1=36pF
Output	L2=33nH ,	C1=36pF
Source/Load Impedance	50 Ω	



ANATECH ELECTRONICS INC
RF & Microwave Filters & Products

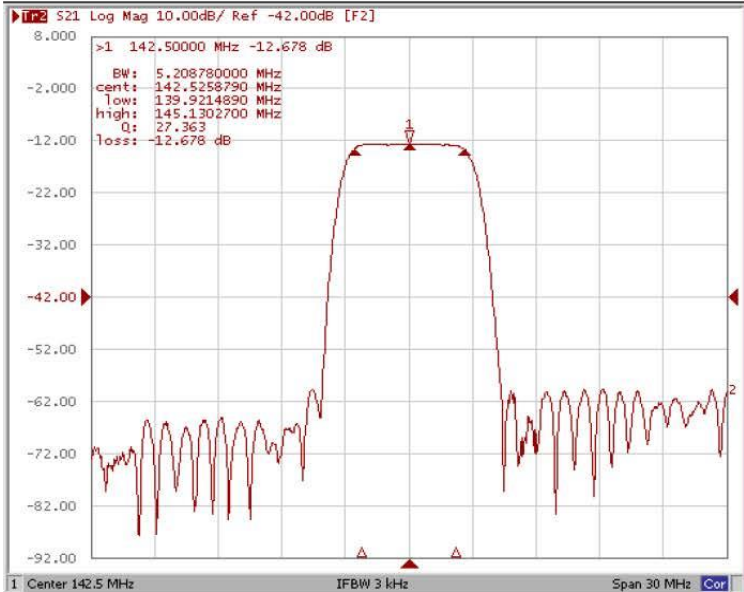
142.5 MHz IF Saw Filter

Part Number: AM142S712

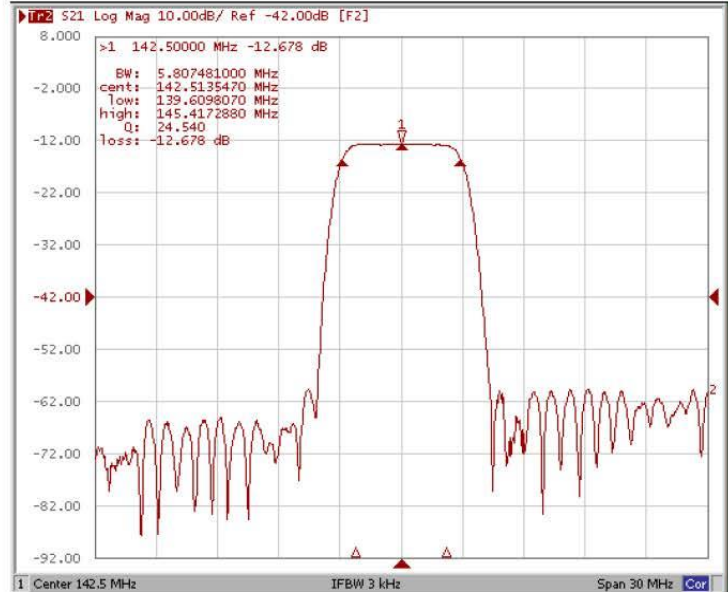


Frequency Response:

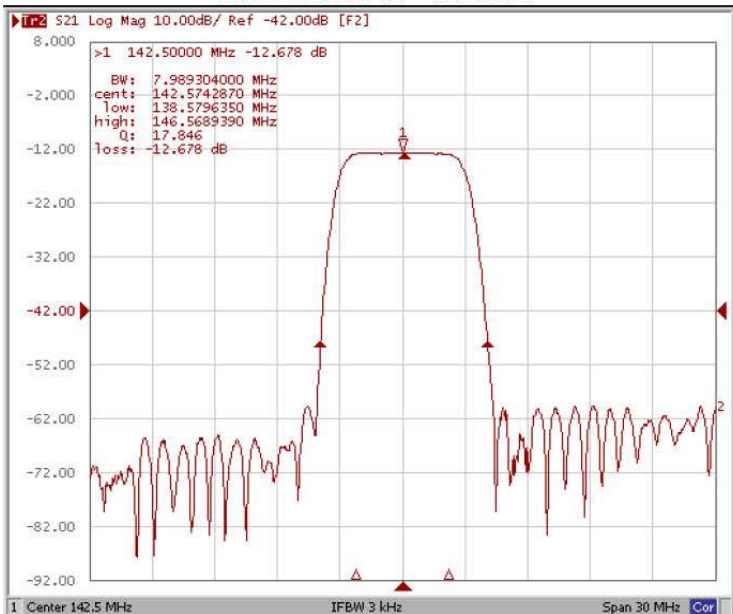
Bandwidth at -1.0 dB



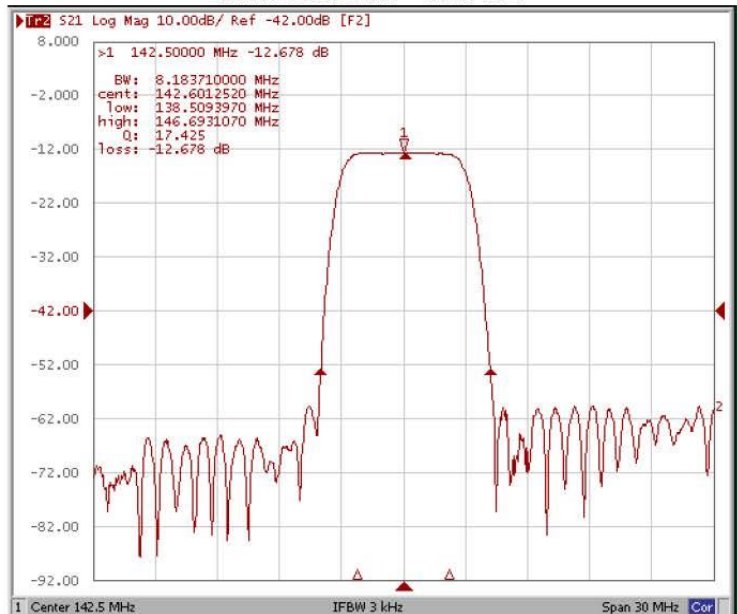
Bandwidth at -3.0 dB



Bandwidth at -35.0 dB



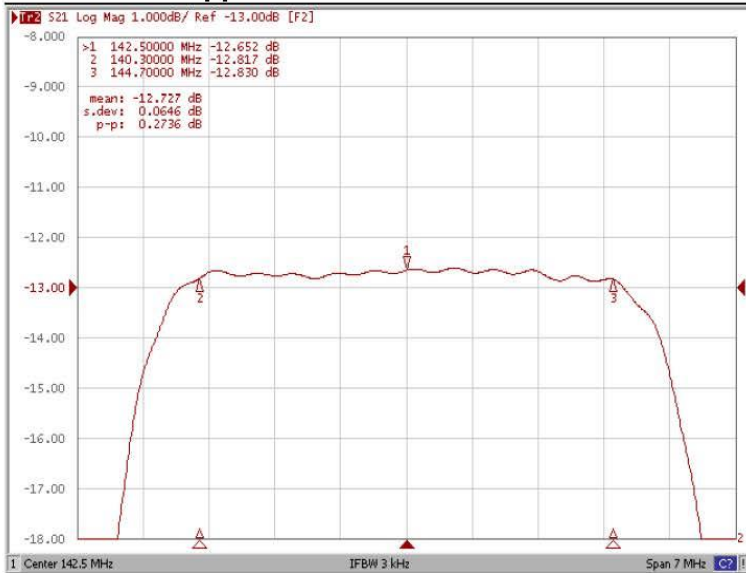
Bandwidth at -40.0 dB



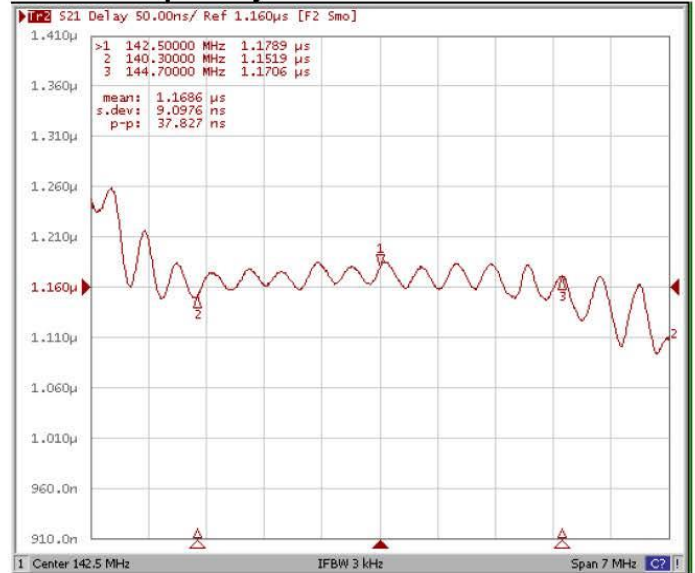


Frequency Response:

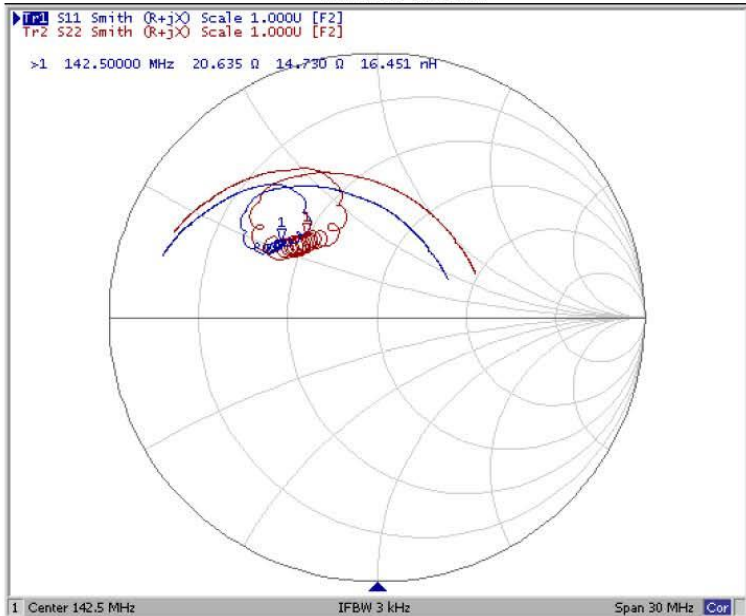
Ripple Variation Fo±2.2MHz



Group Delay Variation Fo±2.2MHz



Smith Chart



SWR

