



145 MHz IF Saw Filter 10 MHz Bandwidth

Part Number: AM145S615

ANATECH ELECTRONICS INC
RF & Microwave Filters & Products



Parameters Description	Unit	Minimum	Typical	Maximum
Center Frequency (Fo)	MHz	144.90	145.00	145.10
Insertion Loss at Fo	dB	-	25.00	27.00
Passband Ripple within Fo ± 4.42 MHz	dB	-	0.55	0.80
Group Delay Variation within Fo ± 4.42 MHz	nsec	-	40	100
Absolute Delay at Fo	µsec	-	3.14	-
Temperature Coefficient	ppm/°C	-	-18	-
Bandwidth at -1.0 dB	MHz	9.70	10.30	-
Bandwidth at -3.0 dB	MHz	-	10.60	-
Bandwidth at -40.0 dB	MHz	-	11.90	-
Ultimate Rejection	dB	50	55	-

Parameters Description	Unit	Minimum	Typical	Maximum
Operation Temperature Range	°C	-30	-	+80
Storage Temperature Range	°C	-40	-	+85
Maximum DC Voltage	V	-	-	10
Maximum Input Power	dBm	-	-	10
Source Impedance (Single Ended) ₁	Ω	-	50	-
Load Impedance (Single Ended) ₁	Ω	-	50	-
Package Size and Type	20.0 x 9.8 x 1.8 mm		D1	



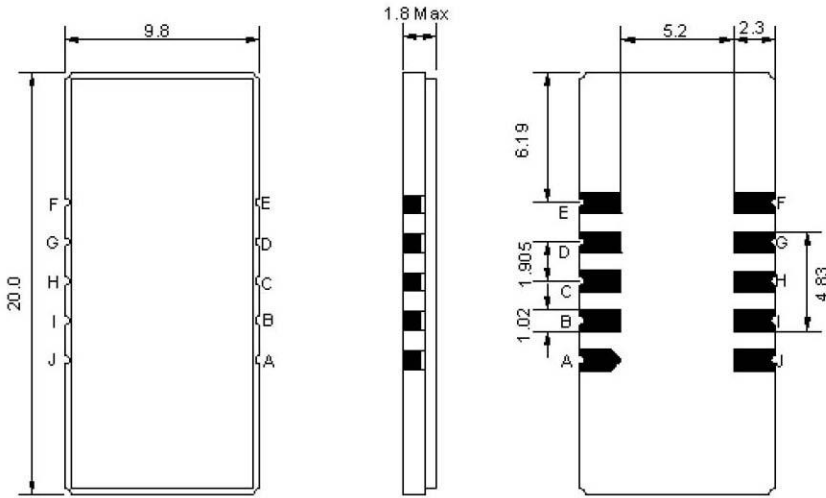
145 MHz IF Saw Filter 10 MHz Bandwidth

Part Number: AM145S615



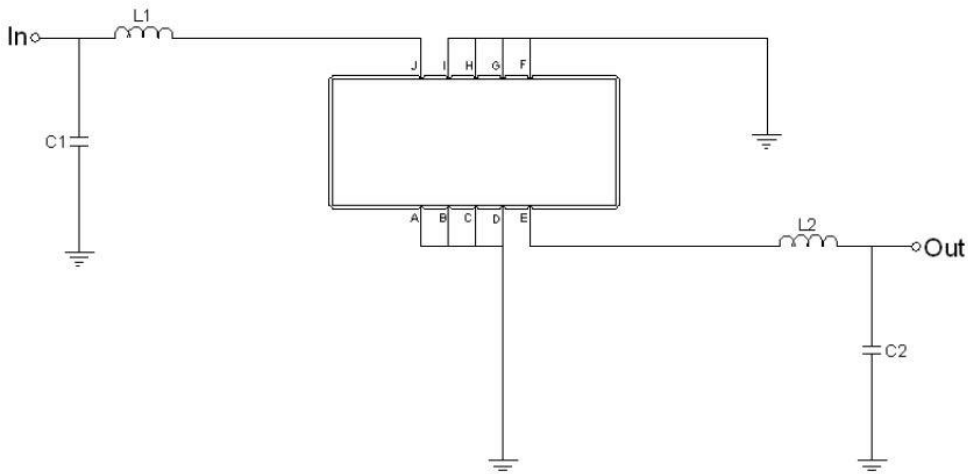
ANATECH ELECTRONICS INC
RF & Microwave Filters & Products

Outline Drawing:



Pin Description	
Ground	A B C D F G H I
Input	J
Output	E

Testing Environment:



Test Fixture & Values	
Input	L1 = 33 nH , C1 = 61 pF
Output	L1 = 39 nH , C1 = 33 pF
Source/Load Impedance	50 Ω



145 MHz IF Saw Filter 10 MHz Bandwidth

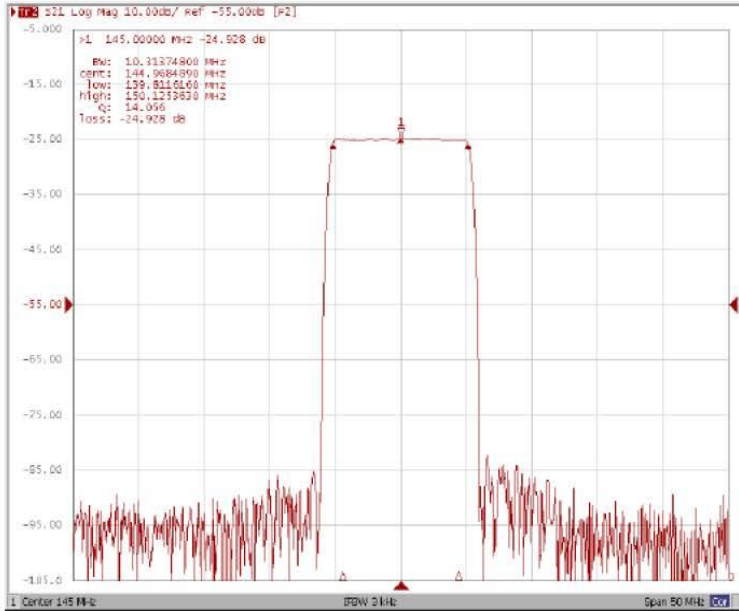
Part Number: AM145S615



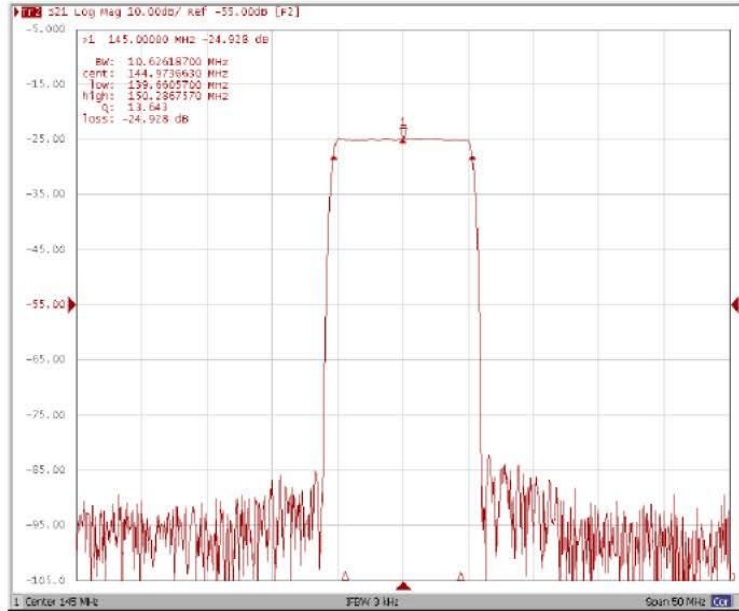
ANATECH ELECTRONICS INC
RF & Microwave Filters & Products

Frequency Response:

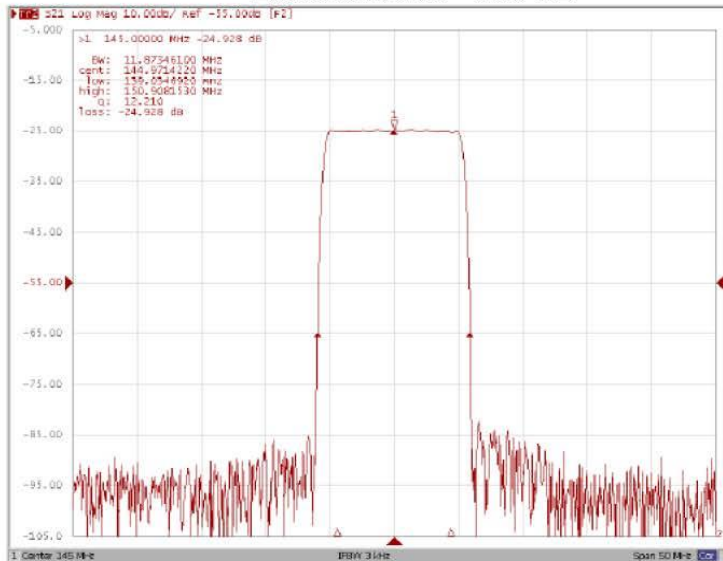
Bandwidth at -1.0 dB



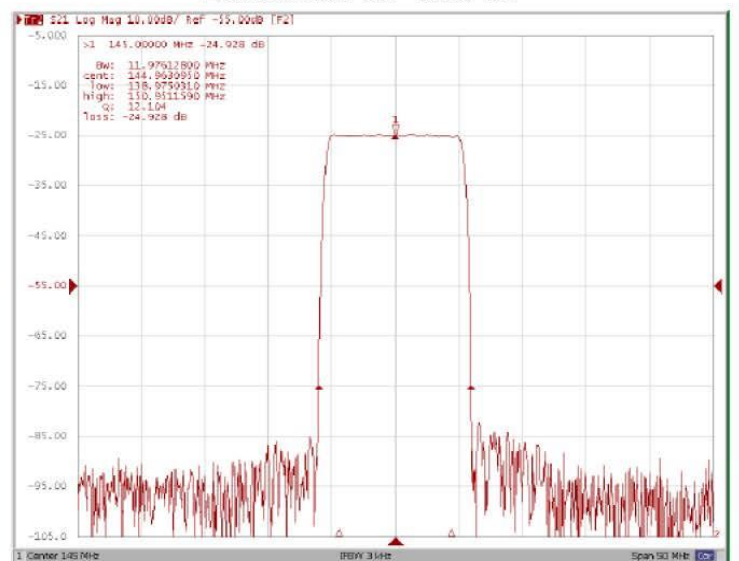
Bandwidth at -3.0 dB



Bandwidth at -40.0 dB



Bandwidth at -50.0 dB





145 MHz IF Saw Filter 10 MHz Bandwidth

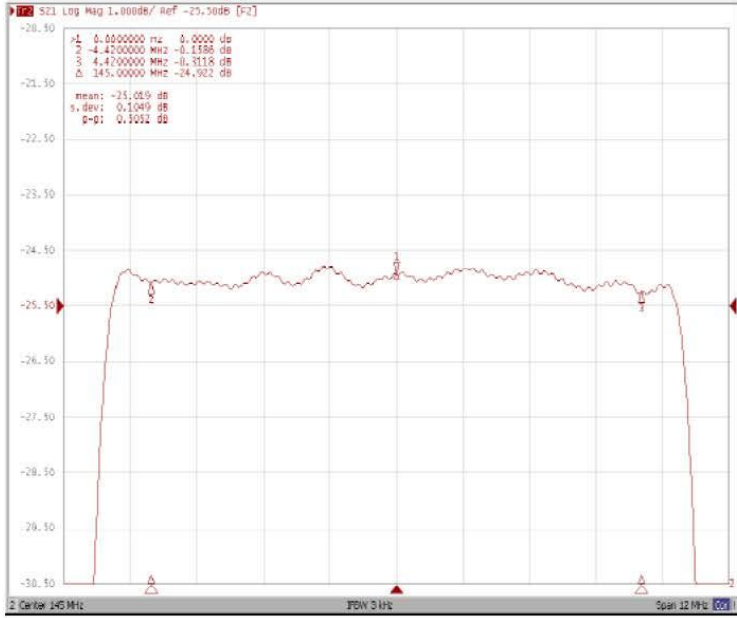
Part Number: AM145S615



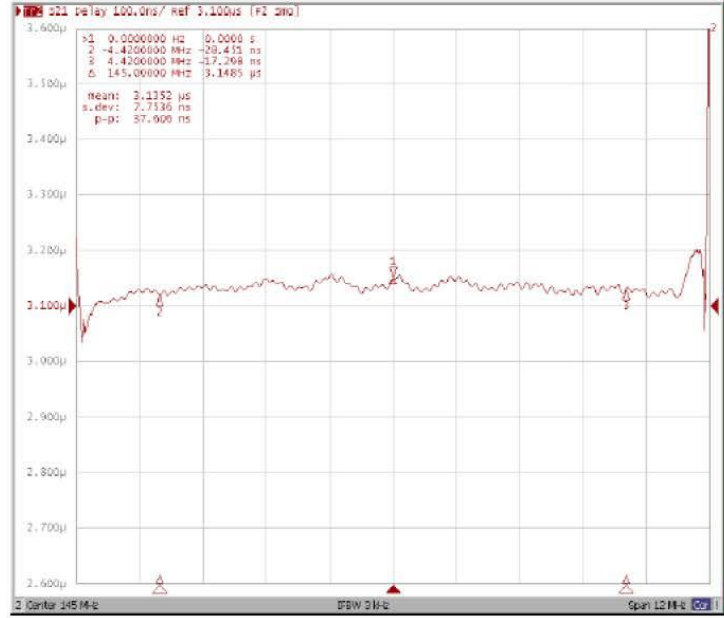
ANATECH ELECTRONICS INC
RF & Microwave Filters & Products

Frequency Response:

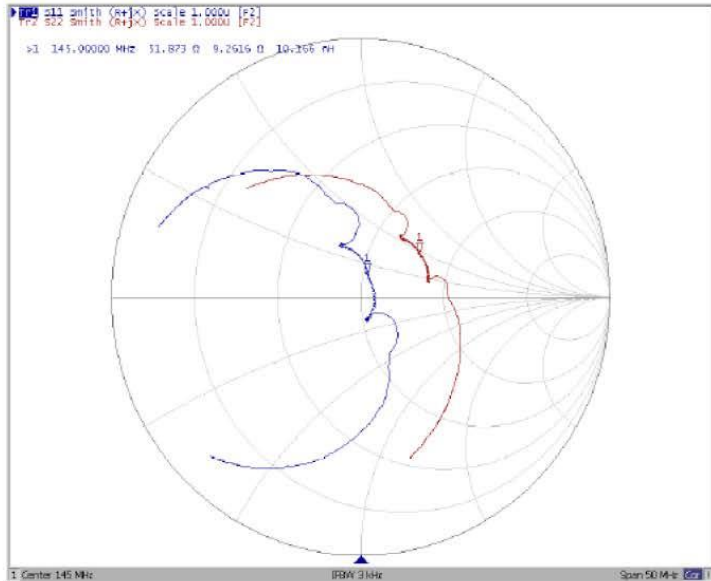
Ripple Variation Fo±4.42MHz



Group Delay Variation Fo±4.42MHz



Smith Chart



SWR

